



MOBILE MIXERS

PARTS MANUAL

12Z24 - 14Z24 - 16Z24

HAYSIZOR,
STATIONARY, TRUCK & TRAILER MODELS

Serial number up to _____

Harsh International, Inc.
600 Oak Ave.
Eaton, CO 80615-0007
(970) 454-2291
Fax: (970) 454-3491

Price: \$2.50

Parts book number: **103082**

PARTS ORDERING INFORMATION

To assure continued safe and efficient operation and to maintain the validity of your warranty use only genuine Harsh replacement parts. To obtain the correct parts for your mixer contact the nearest Harsh equipment dealer in your area. If no Harsh dealer is available, contact Harsh International Inc., 600 Oak Avenue, Eaton, CO 80615, (970) 454-2291.

When ordering parts, be sure to know the Model and Serial numbers of the machine. For the quickest service when ordering by phone, be prepared to state the part number and description as well as the Parts Manual part number, the page number and item number of the part(s) you are ordering.

Always have repairs performed by qualified Service Personnel from your Harsh dealer.

All information, illustrations and specifications contained in this manual are based on the latest product information available at the time of printing.

Harsh International, Inc. reserves the right to make changes to manuals, parts or assemblies at any time without prior notice.

REPLACEMENT MANUALS

Replacement or extra Operator's Manuals and Parts Manuals are available from Harsh or contact your local dealer.

All Operator's Manuals and Parts Manuals are ordered by Model number and Serial number of **your** unit.

There is a nominal cost for each manual ordered.

!!!! IMPORTANT !!!!

Before attempting to operate, inspect, adjust, repair or replace any part of your machine be sure to be thoroughly familiar with your Operator's Manual and observe all safety notices; both printed in the manual and on decals located on the machine.

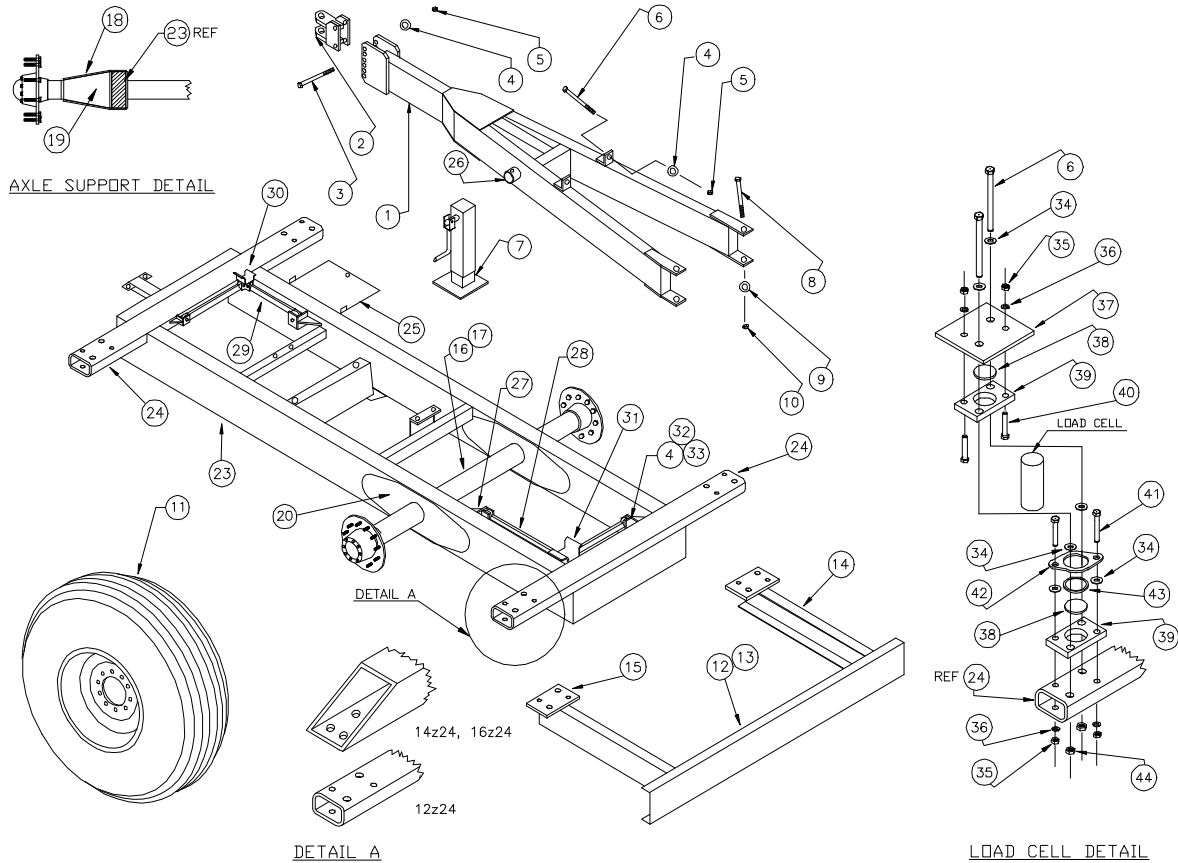
**FAILURE TO OBSERVE THESE SAFETY RULES COULD RESULT IN
SERIOUS INJURY AND/OR PROPERTY DAMAGE!**

INDEX

GROUPS	PAGE NO.
AUGER ASSEMBLY	24,25
DISCHARGE	30-39
DISCHARGE DOOR CYLINDER	46
DRIVE LINE, TRAILER	18,19
DRIVE LINE, TRUCK	20-23
DROP CHUTE CYLINDER	47
ELECTRICAL SWITCHES	48
GTD	16
HYDRAULIC COMPONENTS	43
LIGHTS	49
LINERS	40,41
MIXER DECALS	50,51
REAR DRIVE ASSEMBLY	26-28
REAR OIL BATH AND DOORS	53
SUB FRAME, TRUCK	12,14-15
SWING ARM	52
TRAILER AXLE	7
TRAILER FRAME	4,6,8-11
TRAILER HYDRAULICS	42
TRUCK HYDRAULICS	44,45
TUB GUARD	54

TRAILER FRAME

LOWERED TRAILER



TRAILER FRAME

ITEM PART # QTY DESCRIPTION

1	A17350	1	TONGUE
2	A16606	1	HITCH
3	101434	2	SCREW 6"
4	100554	12	LOCK WASHER
5	100658	4	NUT
6	100580	10	SCREW
7	102349	1	JACK
8	101878	2	SCREW
9	101879	2	LOCK WASHER
10	100355	2	NUT
*11	102588	2	TIRE, COMPLETE W/TUBE & RIM
*11	102583	2	TIRE, AIRPLANE COMP W/TUBE & RIM
12	A17352	1	BUMPER ASS'Y
13	15429	1	CHANNEL, FORMED BUMPER
14	17353	2	CHANNEL, BUMPER EXTENSION
15	17775	2	MOUNT PLATE
16	102873	1	AXLE
17	17347	1	AXLE REINFORCING TUBE
18	18384	4	FORMED AXLE SUPPORT
19	18383	4	AXLE SUPPORT PLATE
20	17470	4	FRAME REINFORCING PLATE
21	17471	2	CHANNEL, 27" AXLE CASE
22	17346	4	CHANNEL, 13 3/4" AXLE CASE

ITEM PART # QTY DESCRIPTION

23	~	1	FRAME ASS'Y (SPECIAL ORDER ONLY)
24	~	2	CROSS TUBE (SPECIAL ORDER ONLY)
25	16547	1	BATTERY TRAY
26	NSS	1	TUBE, JACK MOUNT
27	15059	4	STABILIZER MOUNT ASS'Y
28	11879	2	STABILIZER BAR
29	18562	2	STABILIZER BAR
30	17584	1	TUB MOUNT
31	18470	1	TUB MOUNT
32	101413	8	SCREW
33	100252	8	NUT
34	100663	24	FLAT WASHER
35	100248	16	NUT
36	100273	16	LOCK WASHER
37	18880	4	PEDESTAL BASE PLATE
38	102220	8	URETHANE SHOCK DISK
39	14898	8	SCALE PLATE, LOAD CELL
40	102249	8	SCREW
*41	102899	8	SCREW
42	16109	4	LOAD CELL LOCK RING
43	100156	4	O-RING
44	101009	8	NUT

NOTE: FOR UNITS WITH SERIAL NUMBERS ABOVE (12Z24HB8000, 14Z24HB8000, 16Z24HB8000), PLEASE REFER TO PAGE 8-9.

*11 - ENSURE CORRECT SIZE BEFORE ORDERING.

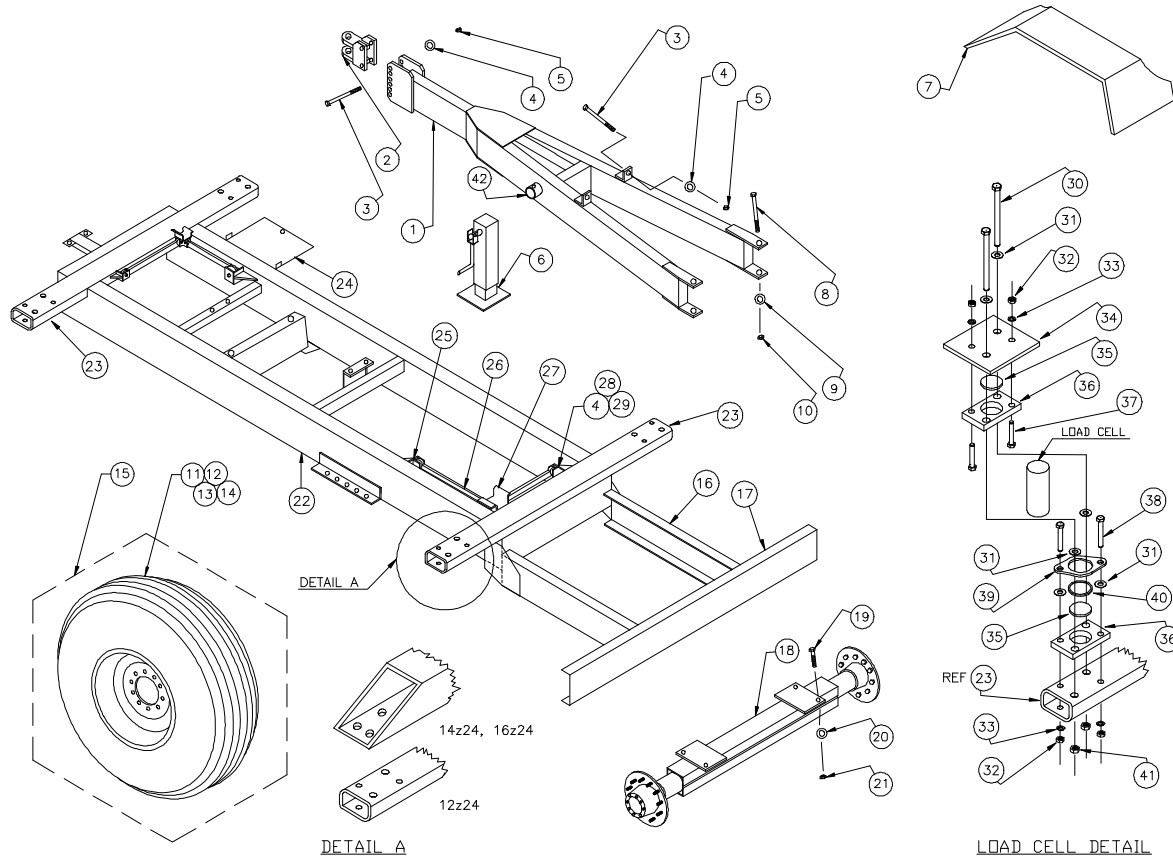
*41 - 12Z24 USE P/N 102899. 14Z24, 16Z24 USE P/N 102249.

NSS - NOT SOLD SEPARATELY

21, 22 - NOT SHOWN

TRAILER FRAME

LOAD CELL



TRAILER FRAME

ITEM PART # QTY DESCRIPTION

1	A16605	1	TONGUE
2	A16606	1	HITCH
3	101434	4	SCREW 6"
4	100554	12	LOCK WASHER
5	100658	4	NUT
6	102349	1	JACK
7	17354	2	FENDER, TUB MOUNT SINGLE AXLE
7	17715	2	FENDER, TUB MOUNT TANDEM AXLE
8	101878	2	SCREW
9	101879	2	LOCK WASHER
10	100355	2	NUT
*11	100666	2	TIRE, 16.5 x 22.5
*11	102590	2	TIRE, 44 x 16 AIRPLANE
*12	102261	2	TUBE, 15 x 22.5
*12	102591	2	TUBE, 44 x 16 AIRPLANE
*13	102363	2	RIM, 13.5 x 22.5 W/10 HOLES
*13	102592	2	RIM, 18 x 15 W/10 HOLES, AIRPLANE
14	102600	2	FLAP, AIRPLANE TIRE 18 x 12
*15	102588	2	TIRE, COMPLETE W/TUBE & RIM
*15	102583	2	TIRE, AIRPLANE COMP W/TUBE & RIM
16	16156	2	BUMPER EXTENSION 12Z24
16	17353	2	BUMPER EXTENSION 14Z24, 16Z24
17	15429	1	BUMPER, REAR
18	A15146	1	AXLE

ITEM PART # QTY DESCRIPTION

19	100322	4	SCREW
20	100361	4	LOCK WASHER
21	100744	4	NUT
22	~	1	FRAME ASS'Y (SPECIAL ORDER ONLY)
23	~	1	CROSS TUBE (SPECIAL ORDER ONLY)
24	A16547	1	BATTERY TRAY
25	15059	4	MOUNT, STABILIZER TO FRAME
26	A11879	4	STABILIZER BAR
27	17584	2	MOUNT, STABILIZER TO TUB
28	101413	8	SCREW
29	100252	8	NUT
30	102900	8	SCREW
31	100663	24	FLAT WASHER
32	100248	16	NUT
33	100273	16	LOCK WASHER
34	18485	4	PEDESTAL BASE PLATE
35	102220	8	URETHANE SHOCK DISK
36	14898	8	CAGE PLATE, LOAD CELL
37	102249	8	SCREW
*38	102899	8	SCREW
39	16109	4	LOAD CELL LOCK RING
40	100156	4	O-RING
41	101009	8	NUT
42	NSS	1	TUBE, JACK MOUNT

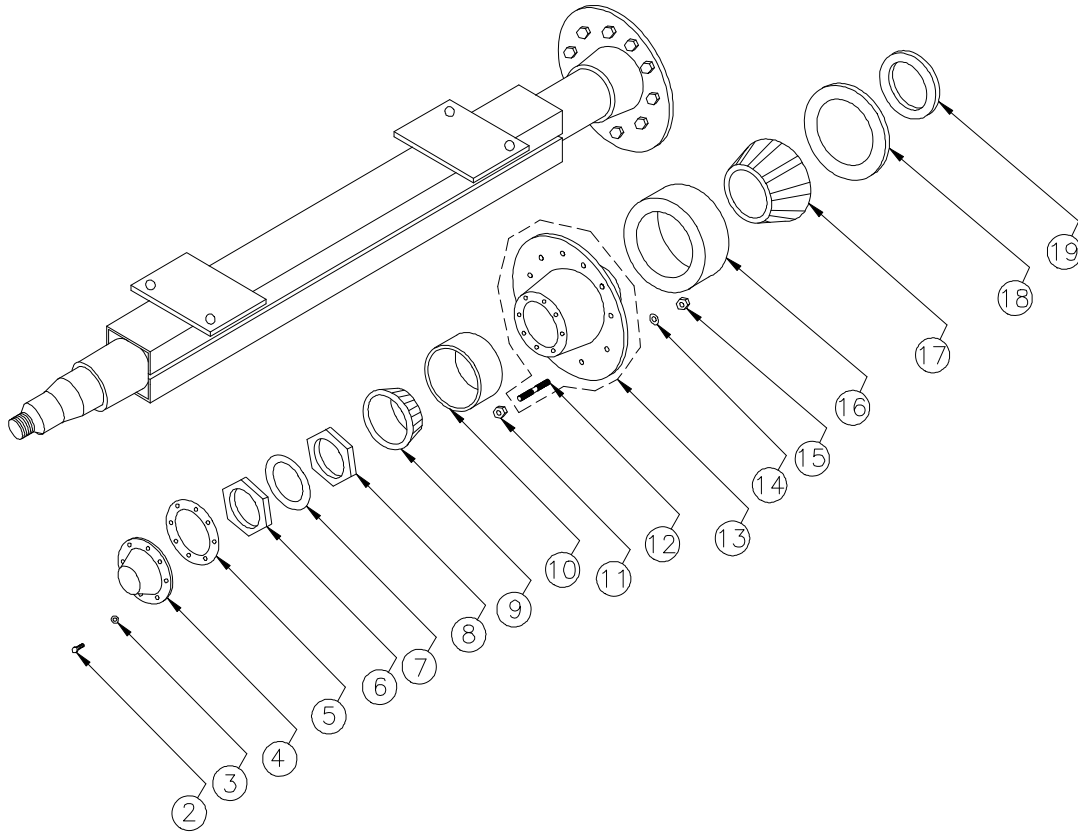
NOTE: FOR UNITS WITH SERIAL NUMBERS ABOVE (12Z24HB8000, 14Z24HB8000, 16Z24HB8000), PLEASE REFER TO PAGE 10-11.

*11, *12, *13, *15 - ENSURE CORRECT SIZE BEFORE ORDERING.

*38 - 12Z24 USE P/N 102899. 14Z24, 16Z24 USE P/N 102249.

NSS - NOT SOLD SEPARATELY

TRAILER AXLE



TRAILER AXLE

ITEM PART # QTY DESCRIPTION

**	A15146	1	AXLE, ASSEMBLY
2	102272	12	SCREW
3	102904	12	LOCK WASHER
4	102270	2	HUB CAP
5	102271	2	HUB GASKET
6	102268	2	SPINDLE NUT OUTSIDE
7	102269	2	SPINDLE WASHER
8	102267	2	SPINDLE NUT INSIDE
9	102265	2	BEARING CONE OUTSIDE
10	102266	2	BEARING CUP OUTSIDE
11	102276	10	WHEEL NUT LEFT HAND THREAD

ITEM PART # QTY DESCRIPTION

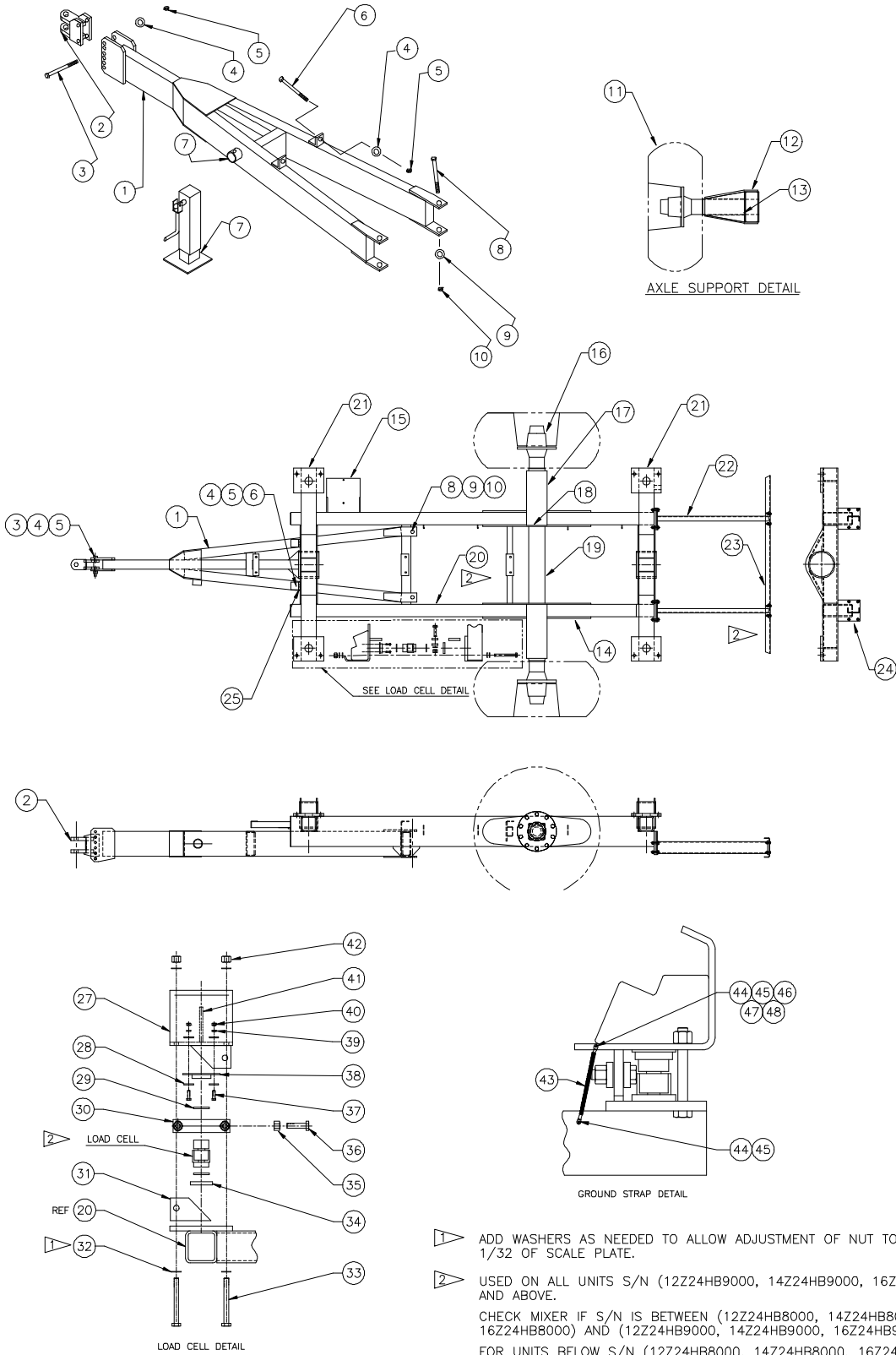
11	102275	10	WHEEL NUT RH THREAD
12	102274	10	WHEEL STUD LH THREAD
12	102273	10	WHEEL STUD RH THREAD
*13	102279	1	HUB LEFT SIDE
*13	102280	1	HUB RIGHT SIDE
14	102278	20	LOCK WASHER
15	102277	20	NUT
16	102264	2	BEARING CUP INSIDE
17	102263	2	BEARING CONE INSIDE
18	102262	2	SEAL, W/SEAL RING
19	NSS	2	SEAL RING

NOTE: *13 INCLUDES 10, 12, 14, 15, 16.

** USED ON ALL Z24 TRAILERS EXCEPT THE LOWERED FRAME MODEL; SEE PAGE 4, ITEM 16 OR PAGE 9, ITEM 16.
 LEFT SIDE HUB USES LEFT HAND THREADS AND RIGHT SIDE HUB USES RIGHT HAND THREADS.
 NSS - NOT SOLD SEPARATELY

TRAILER FRAME

LOWERED TRAILER



- 1 ADD WASHERS AS NEEDED TO ALLOW ADJUSTMENT OF NUT TO WITHIN 1/32" OF SCALE PLATE.
- 2 USED ON ALL UNITS S/N (12Z24HB9000, 14Z24HB9000, 16Z24HB9000) AND ABOVE.
CHECK MIXER IF S/N IS BETWEEN (12Z24HB8000, 14Z24HB8000, 16Z24HB8000) AND (12Z24HB9000, 14Z24HB9000, 16Z24HB9000).
FOR UNITS BELOW S/N (12Z24HB8000, 14Z24HB8000, 16Z24HB8000), PLEASE SEE PAGE 4.

TRAILER FRAME

LOWERED TRAILER

ITEM	PART #	QTY	DESCRIPTION	ITEM	PART #	QTY	DESCRIPTION
1	A17350	1	TONGUE	24	18944	2	BOLT-ON BUMPER MOUNT
2	A16606	1	HITCH	25	15099	2	ANGLE, TONGUE MOUNT
3	101434	2	SCREW 6"	27	A18931	4	LOAD CELL BRACKET
4	100554	4	LOCK WASHER	28	100300	32	FLAT WASHER
5	100658	4	NUT	29	102220	8	URETHANE SHOCK DISK
6	100580	2	SCREW 8"	30	18855	8	STABILIZER BAR
7	102349	1	JACK	31	18847	4	STABILIZER PLATE
*7	NSS	1	JACK MOUNT TUBE	32	100556	16	FLAT WASHER
8	101878	2	SCREW	33	101877	8	SCREW
9	101879	2	LOCK WASHER	34	18858	4	LOAD CELL LOCK
10	100355	2	NUT	35	NPN	8	LOCK NUT
*11	102588	2	TIRE, COMPLETE W/TUBE & RIM	36	100367	8	SCREW
*11	102583	2	TIRE, AIRPLANE COMP W/TUBE & RIM	37	100240	16	SCREW
12	18382	4	FORMED AXLE SUPPORT	38	A18870	4	LOAD CELL KEEPER
13	18381	4	AXLE SUPPORT PLATE	39	100271	16	LOCK WASHER
14	17344	4	REINFORCING PLATE	40	100254	16	NUT
15	A16547	1	BATTERY TRAY	41	18935	4	LOAD CELL GUSSET
16	102873	1	AXLE	42	101009	8	LOCK NUT
17	17346	4	FORMED AXLE CHANNEL 13 3/4"	43	A16362	1	GROUNDING STRAP
18	17347	1	REINFORCING AXLE TUBE	44	100323	2	SCREW
19	17345	2	FORMED AXLE CHANNEL 25"	45	100304	2	LOCK WASHER
20	~	1	FRAME ASS'Y (SPECIAL ORDER ONLY)	46	100221	1	NUT
21	~	2	CROSS TUBE (SPECIAL ORDER ONLY)	47	NPN	1	STAR WASHER
22	19018	2	BUMPER EXTENSION	48	100443	1	FLAT WASHER
23	18940	1	BUMPER, REAR				

NOTE: *7 - WELD ON MOUNT SUPPLIED WITH JACK.

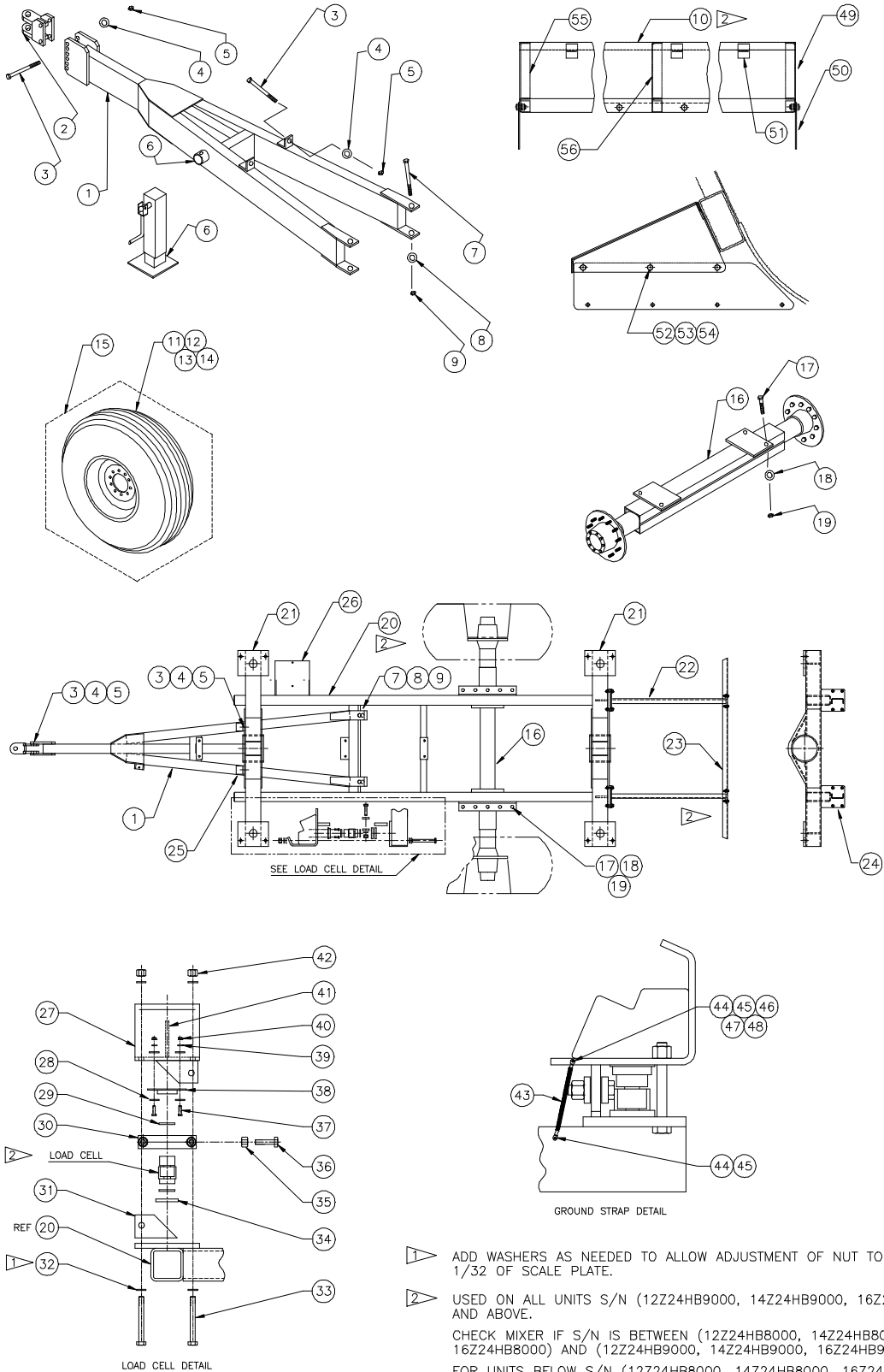
*11 - ENSURE CORRECT SIZE BEFORE ORDERING.

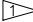

NPN - NO PART NUMBER

NSS - NOT SOLD SEPARATELY

TRAILER FRAME

LOAD CELL



 ADD WASHERS AS NEEDED TO ALLOW ADJUSTMENT OF NUT TO WITHIN 1/32 OF SCALE PLATE.
 USED ON ALL UNITS S/N (12Z24HB9000, 14Z24HB9000, 16Z24HB9000) AND ABOVE.
 CHECK MIXER IF S/N IS BETWEEN (12Z24HB8000, 14Z24HB8000, 16Z24HB8000) AND (12Z24HB9000, 14Z24HB9000, 16Z24HB9000).
 FOR UNITS BELOW S/N (12Z24HB8000, 14Z24HB8000, 16Z24HB8000), PLEASE SEE PAGE 6.

TRAILER FRAME

LOAD CELL

ITEM	PART #	QTY	DESCRIPTION	ITEM	PART #	QTY	DESCRIPTION
1	A16605	1	TONGUE	29	102220	8	URETHANE SHOCK DISK
2	A16606	1	HITCH	30	18855	8	STABILIZER BAR
3	101434	4	SCREW 6"	31	18847	4	STABILIZER PLATE
4	100554	4	LOCK WASHER	32	100556	16	FLAT WASHER
5	100658	4	NUT	33	101877	8	SCREW
6	102349	1	JACK	34	18858	4	LOAD CELL LOCK
*6	NSS	1	JACK MOUNT TUBE	35	NPN	8	LOCK NUT
7	101878	2	SCREW	36	100367	8	SCREW
8	101879	2	LOCK WASHER	37	100240	16	SCREW
9	100355	2	NUT	38	A18870	4	LOAD CELL KEEPER
*10	NPN	2	SLOPED FENDER	39	100271	16	LOCK WASHER
*11	100666	2	TIRE, 16.5 x 22.5	40	100254	16	NUT
*11	102590	2	TIRE, 44 x 16 AIRPLANE	41	18935	4	LOAD CELL GUSSET
*12	102261	2	TUBE, 15 x 22.5	42	101009	8	LOCK NUT
*12	102591	2	TUBE, 44 x 16 AIRPLANE	43	A16362	1	GROUNDING STRAP
*13	102363	2	RIM, 13.5 x 22.5 W/10 HOLES	44	100323	2	SCREW
*13	102592	2	RIM, 18 x 15 W/10 HOLES, AIRPLANE	45	100304	2	LOCK WASHER
14	102600	2	FLAP, AIRPLANE TIRE 18 x 12	46	100221	1	NUT
*15	102588	2	TIRE, COMPLETE W/TUBE & RIM	47	NPN	1	STAR WASHER
*15	102583	2	TIRE, AIRPLANE COMP W/TUBE & RIM	48	100443	1	FLAT WASHER
16	A15146	1	AXLE	*49	18932	2	FENDER CLOSURE (RIGHT)
17	100322	4	SCREW	*49	19022	2	FENDER CLOSURE (RIGHT)
18	100361	4	LOCK WASHER	*50	18900	4	SHEET, MUD FLAP EXTENSION
19	100744	4	NUT	*50	19024	4	SHEET, MUD FLAP EXTENSION
20	~	1	FRAME ASS'Y (SPECIAL ORDER ONLY)	51	18902	6	FENDER KEEPER
21	~	2	CROSS TUBE (SPECIAL ORDER ONLY)	52	100276	12	SCREW
22	19018	2	BUMPER EXTENSION	53	100271	12	WASHER
23	18940	1	BUMPER, REAR	54	100254	12	NUT
24	18944	2	BOLT-ON BUMPER MOUNT	*55	18933	2	FENDER CLOSURE (LEFT)
25	15099	2	ANGLE, TONGUE MOUNT	*55	19023	2	FENDER CLOSURE (LEFT)
26	A16547	1	BATTERY TRAY	*56	18933	2	FENDER CLOSURE (LEFT) - optional
27	A18931	4	LOAD CELL BRACKET	*56	19023	2	FENDER CLOSURE (LEFT) - optional
28	100300	32	FLAT WASHER				

NOTE: *6 - WELD ON MOUNT SUPPLIED WITH JACK.

*10 - SPECIFY LENGTH WHEN ORDERING.

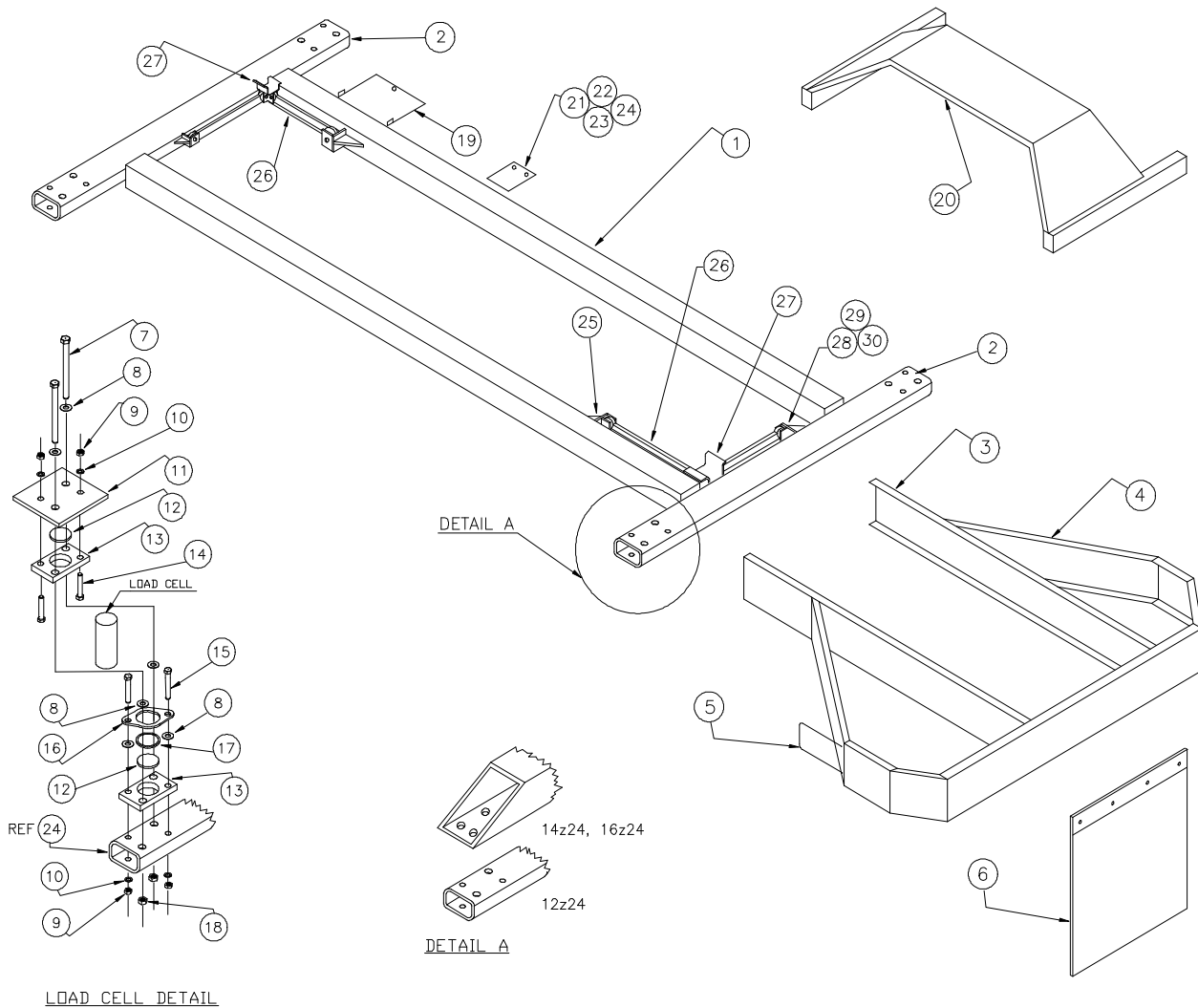
*11, *12, *13, *15 - ENSURE CORRECT SIZE BEFORE ORDERING.

*49, *50, *55, *56 - SPECIFY FENDER WIDTH.

NPN - NO PART NUMBER

NSS - NOT SOLD SEPARATELY

SUB FRAME TRUCK



SUB FRAME TRUCK

ITEM PART # QTY DESCRIPTION

1	~	1	SUB FRAME (SPECIAL ORDER ONLY)
2	~	2	CROSS TUBE (SPECIAL ORDER ONLY)
3	15063	2	CHANNEL, BUMPER EXTENSION
4	A16259	1	BUMPER ASSEMBLY
5	16353	1	STEP
6	100312	2	MUD FLAPS
7	102900	8	SCREW
8	100663	24	FLAT WASHER
9	100248	16	NUT
10	100273	16	LOCK WASHER
11	16001	4	PEDESTAL BASE PLATE
12	102220	8	URETHANE SHOCK DISK
13	14898	8	CAGE PLATE, LOAD CELL
14	102249	8	SCREW
*15	102899	8	SCREW

ITEM PART # QTY DESCRIPTION

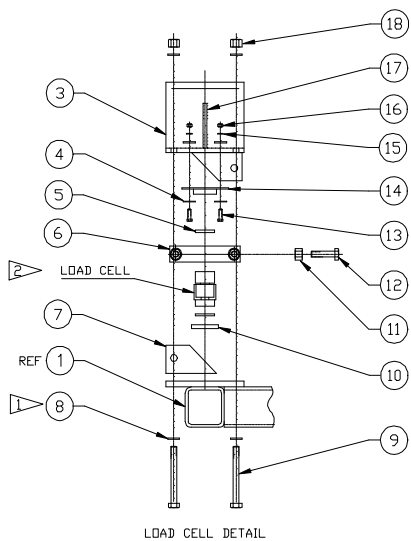
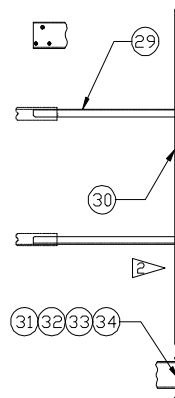
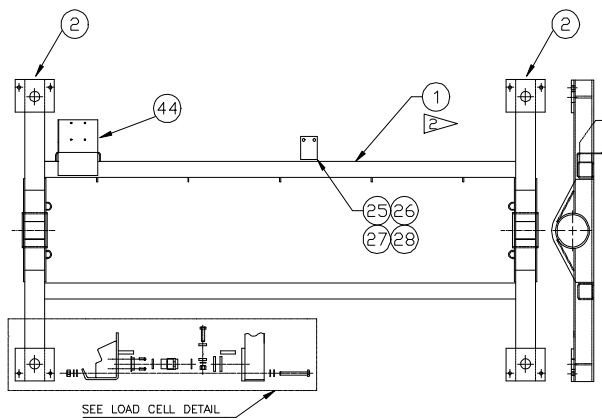
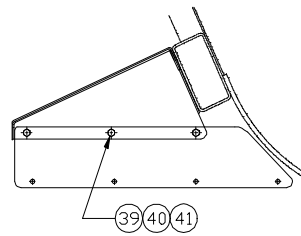
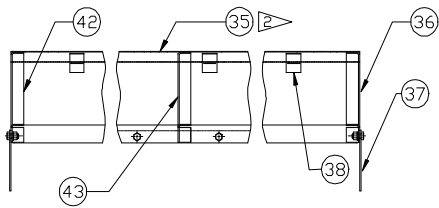
16	16109	4	LOAD CELL LOCK RING
17	100156	4	O-RING
18	101009	8	NUT
19	A16547	1	BATTERY TRAY
20	A14935	2	FENDER, STANDARD
21	15629	6	STRAP, SUB FRAME MOUNT
22	300826	12	NUT
23	100272	12	LOCK WASHER
24	300904	12	SCREW
25	15059	4	STABILIZER MOUNT ASS'Y
26	11879	4	STABILIZER BAR
27	18470	2	TUB MOUNT
28	101413	8	SCREW
29	100554	8	LOCK WASHER
30	100252	8	NUT

NOTE: FOR UNITS WITH SERIAL NUMBERS ABOVE (12Z24HB8000, 14Z24HB8000, 16Z24HB8000), PLEASE REFER TO PAGE 14-15.

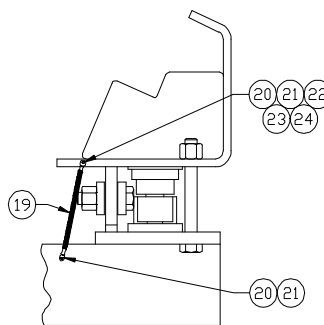
*15 - 12Z24 USE P/N 102899. 14Z24, 16Z24 USE P/N 102249.

SUB FRAME TRUCK

LOAD CELL



LOAD CELL DETAIL



GROUND STRAP DETAIL

1 ADD WASHERS AS NEEDED TO ALLOW ADJUSTMENT OF NUT TO WITHIN 1/32 OF SCALE PLATE.

2 USED ON ALL UNITS S/N (12Z24HB9000, 14Z24HB9000, 16Z24HB9000) AND ABOVE.

CHECK MIXER IF S/N IS BETWEEN (12Z24HB8000, 14Z24HB8000, 16Z24HB8000) AND (12Z24HB9000, 14Z24HB9000, 16Z24HB9000).

FOR UNITS BELOW S/N (12Z24HB8000, 14Z24HB8000, 16Z24HB8000), PLEASE SEE PAGE 12.

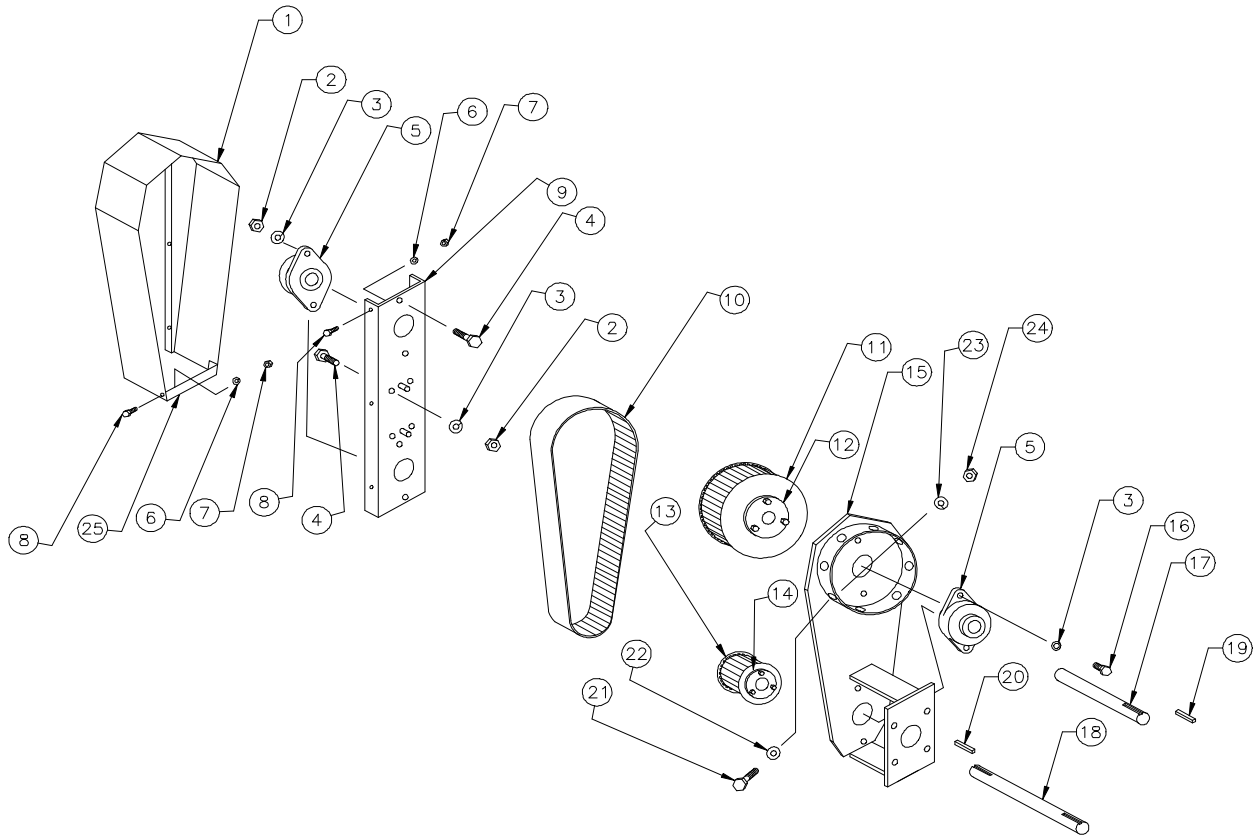
SUB FRAME TRUCK

LOAD CELL

ITEM	PART #	QTY	DESCRIPTION	ITEM	PART #	QTY	DESCRIPTION
1	~	1	SUB FRAME (SPECIAL ORDER ONLY)	25	15629	6	STRAP, SUB-FRAME MOUNT
2	~	2	CROSS TUBE (SPECIAL ORDER ONLY)	26	300826	12	NUT
3	A18931	4	LOAD CELL BRACKET	27	100272	12	LOCKWASHER
4	100300	32	FLAT WASHER	28	300904	12	SCREW
5	102220	8	URETHANE SHOCK DISK	29	A18973	2	BUMPER EXTENSION
6	18855	8	STABILIZER BAR	30	18972	1	BUMPER, TRUCK
7	18847	4	STABILIZER PLATE	31	101444	10	SCREW
8	100556	16	FLAT WASHER	32	100338	10	FLAT WASHER
9	101877	8	SCREW	33	100272	10	LOCK WASHER
10	18858	4	LOAD CELL LOCK	34	300826	10	NUT
11	NPN	8	LOCK NUT	*35	NPN	2	SLOPED FENDER
12	100367	8	SCREW	*36	18932	2	FENDER CLOSURE (RIGHT)
13	100240	16	SCREW	*36	19022	2	FENDER CLOSURE (RIGHT)
14	A18870	4	LOAD CELL KEEPER	*37	18900	4	SHEET, MUD FLAP EXTENSION
15	100271	16	LOCK WASHER	*37	19024	4	SHEET, MUD FLAP EXTENSION
16	100254	16	NUT	38	18902	6	FENDER KEEPER
17	18935	4	LOAD CELL GUSSET	39	100276	12	SCREW
18	101009	8	LOCK NUT	40	100271	12	WASHER
19	A16362	1	GROUNDING STRAP	41	100254	12	NUT
20	100323	2	SCREW	*42	18933	2	FENDER CLOSURE (LEFT)
21	100304	2	LOCK WASHER	*42	19023	2	FENDER CLOSURE (LEFT)
22	100221	1	NUT	*43	18933	2	FENDER CLOSURE (LEFT) - optional
23	NPN	1	STAR WASHER	*43	19023	2	FENDER CLOSURE (LEFT) - optional
24	100443	1	FLAT WASHER	44	18267	1	HYD. PUMP MNT. ASS'Y - optional

NOTE: *35 - SPECIFY LENGTH WHEN ORDERING.
 *36, *37, *42, *43 - SPECIFY FENDER WIDTH.
 NPN - NO PART NUMBER

GTD



GTD

ITEM PART # QTY DESCRIPTION

	A9560	1	GTD ASS'Y (16") WITH RING
	A9561	1	GTD ASS'Y (19 1/4") WITH RING
	A9562	1	GTD ASS'Y (22 3/4") WITH RING
	A18277	1	GTD ASS'Y (16") WITH OUT RING
	A18278	1	GTD ASS'Y (19 1/4") WITH OUT RING
	A18279	1	GTD ASS'Y (22 3/4") WITH OUT RING
1	A15045	1	COVER ASSEMBLY (16" GTD)
1	A15588	1	COVER ASSEMBLY (19 1/4" GTD)
1	A17151	1	COVER ASSEMBLY (22 3/4" GTD)
2	300826	4	NUT
3	100272	14	LOCK WASHER
4	101444	4	SCREW
5	302071	4	BEARING
6	100304	8	LOCK WASHER (16" GTD)
6	100304	10	LOCK WASHER (19 1/4" GTD)
6	100304	12	LOCK WASHER (22 3/4" GTD)
7	100221	8	NUT (16" GTD)
7	100221	10	NUT (19 1/4" GTD)
7	100221	12	NUT (22 3/4" GTD)
8	101819	8	SCREW (16" GTD)
8	101819	10	SCREW (19 1/4" GTD)
8	101819	12	SCREW (22 3/4" GTD)
9	15042	1	CHANNEL, FORMED (16" GTD)
9	15802	1	CHANNEL, FORMED (19 1/4" GTD)
9	17138	1	CHANNEL, FORMED (22 3/4" GTD)

ITEM PART # QTY DESCRIPTION

*10	102021	1	POLY CHAIN, (16" GTD)
*10	102018	1	POLY CHAIN, (19 1/4" GTD)
*10	102520	1	POLY CHAIN, (22 3/4" GTD)
*11	102020	1	SPROCKET
*12	101734	1	BUSHING
*13	102019	1	SPROCKET
*14	101730	1	BUSHING
15	A15043	1	BACK ASS'Y (16" GTD) WITH RING
15	A15800	1	BACK ASS'Y (19 1/4" GTD) WITH RING
15	A17137	1	BACK ASS'Y (22 3/4" GTD) WITH RING
15	A17494	1	BACK ASS'Y (16") WITH OUT RING
15	A17535	1	BACK ASS'Y (19 1/4") WITH OUT RING
15	A17537	1	BACK ASS'Y (22 3/4") WITH OUT RING
16	101817	4	SCREW
*17	14682	1	SHAFT, TOP
*18	14679	1	SHAFT, BOTTOM
*19	14717	1	KEY
*20	34890	1	KEY
21	102131	4	SCREW
22	100838	4	FLAT WASHER
23	100272	4	LOCK WASHER
24	102223	4	NUT
25	16343	1	COVER TIGHTENER (16" GTD)
25	16471	1	COVER TIGHTENER (19 1/4" & 22 3/4" GTD)

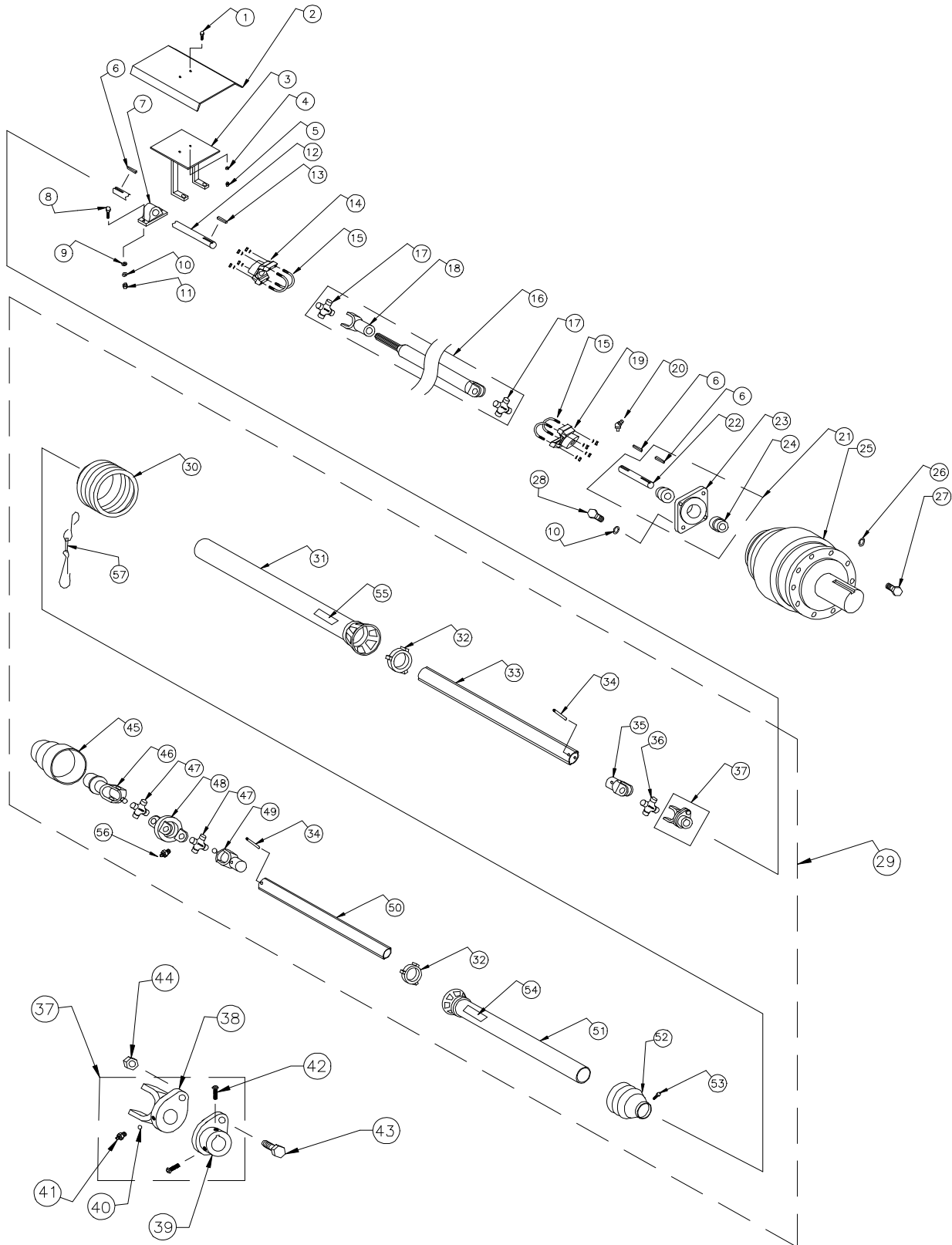
NOTE: THE BELT WIDTH IS 1 1/2 INCHES.

THE GTD IS MEASURED CENTER TO CENTER OF TOP AND BOTTOM SHAFTS.

*13, *14, *18 & *20 CAN BE ORDERED AS A17155 SPROCKET ASSEMBLY.

*11, *12, *17, *19 CAN BE ORDERED AS A17154 SPROCKET ASSEMBLY.

DRIVE LINE TRAILER



DRIVE LINE TRAILER

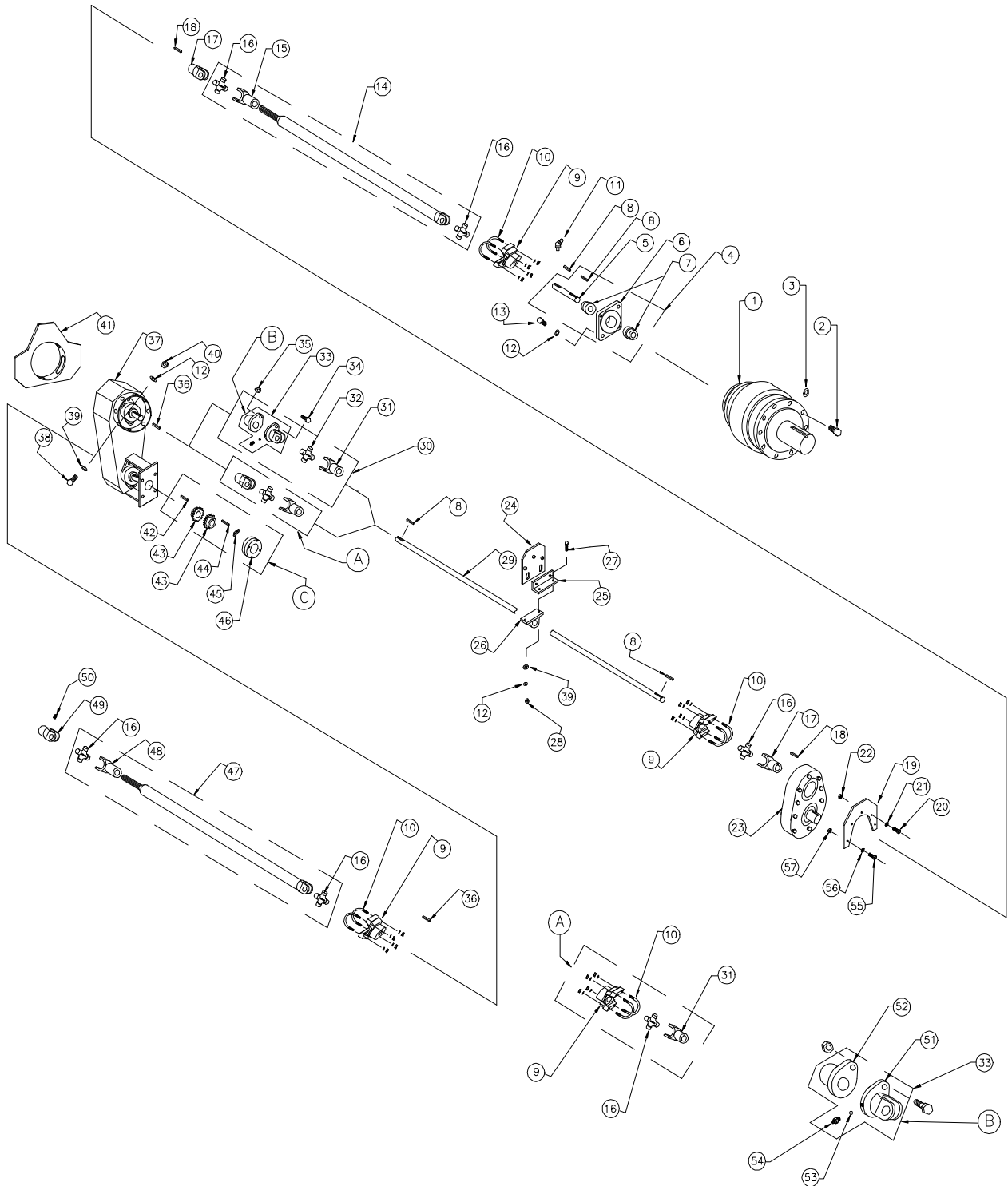
ITEM	PART #	QTY	DESCRIPTION	ITEM	PART #	QTY	DESCRIPTION
1	101134	2	SCREW	15	100882	2	U-BOLT KIT
2	13511	1	DRIVE LINE SHIELD	16	102555	1	DRIVE SHAFT
3	A15694	1	SHIELD MOUNT	17	100785	2	CROSS
4	100170	2	LOCK WASHER	18	NPN	1	YOKE - SPICER # 2-3-8001 kx
5	100297	2	NUT	19	100598	1	YOKE, BOLT ON
6	10983	3	KEY	20	102366	1	GREASE ZERK, 45°
7	101435	3	BEARING	21	A15707	1	INPUT ADAPTER ASS'Y
8	102483	2	SCREW	22	15167	1	INPUT ADAPTER SHAFT
8	102482	4	SCREW	23	A15170	1	INPUT ADAPTER
9	100838	6	FLAT WASHER	24	101827	2	BEARING
10	100272	10	LOCK WASHER	25	102356	1	GEAR BOX PLANETARY ED2090 14.28:1
11	300826	6	NUT	26	101323	10	WASHER
*12	NPN	1	DRIVE SHAFT - specify model	27	102471	10	SCREW
13	16339	1	KEY	28	101444	4	SCREW
14	100724	1	YOKE, BOLT ON				
29	102329	1	PTO DRIVE SHAFT - 540 RPM 6 SPLINE	29	102449	1	PTO DRIVE SHAFT - 1000 RPM 21 SPLINE
30	102063	1	5 RIB CONE	30	102935	1	6 RIB CONE
31	102060	1	SHIELD TUBE, INNER	31	102932	1	SHIELD TUBE, INNER
32	102058	2	BEARING RING	32	102058	2	BEARING RING
33	102055	1	PROFILE	33	102928	1	PROFILE
34	102053	2	SPRING PIN	34	102925	2	SPRING PIN
35	102056	1	INNER YOKE	35	102929	1	INNER YOKE
36	102057	1	CROSS	36	102926	1	CROSS
37	102251	1	SHEAR CLUTCH ASSEMBLY	37	102450	1	SHEAR CLUTCH ASSEMBLY
38	4389	1	SHEAR YOKE	38	4465	1	SHEAR YOKE
39	4392	1	HUB, 1 3/8 BORE	39	4464	1	HUB, 1 3/8 BORE
40	4391	24	BALL BEARING	40	4391	24	BALL BEARING
41	4390	1	GREASE ZERK	41	4390	1	GREASE ZERK
42	102470	2	SET SCREW	42	102470	2	SET SCREW
*43	***	1	SHEAR BOLT	*43	***	1	SHEAR BOLT
44	100297	1	NUT	44	100297	1	NUT
45	102061	1	CV CONE & BEARING ASS'Y	45	102933	1	CV CONE & BEARING ASS'Y
46	102047	1	YOKE, 540 RPM 6 SPLINE	46	102920	1	YOKE, 1000 RPM 21 SPLINE
47	102052	2	CROSS	47	102924	2	CROSS
48	102049	1	DOUBLE YOKE	48	102922	1	DOUBLE YOKE
49	102051	1	INNER YOKE	49	102923	1	INNER YOKE
50	102054	1	PROFILE	50	102927	1	PROFILE
51	102059	1	SHIELD TUBE, OUTER	51	102931	1	SHIELD TUBE, OUTER
52	102062	1	3 RIB CONE	52	102934	1	3 RIB CONE
53	102064	8	SCREW (CV CONE)	53	102064	8	SCREW (CV CONE)
54	102066	1	DECAL, OUTER IN	54	102066	1	DECAL, OUTER IN
55	102067	1	DECAL, INNER IN	55	102067	1	DECAL, INNER IN
56	102050	1	GREASE ZERK	56	102050	1	GREASE ZERK
57	102065	1	SAFETY CHAIN	57	102065	1	SAFETY CHAIN

NOTE: *12 WHEN ORDERING MEASURE LENGTH AND DIAMETER.
 *43 SEE CHART BELOW TO DETERMINE SHEAR BOLT USED.
 NPN - NO PART NUMBER

MIXER	PTO	PART #	GRADE	SHEAR POINT
12Z24-14Z24-16Z24- TRAILER	540 RPM	100356	GRADE-5	SHANK
12Z24 TRAILER	1000 RPM	102571	GRADE-2	SHANK
14Z24-16Z24 TRAILER	1000 RPM	102572	GRADE-5	THREADS

DRIVE LINE TRUCK

W/ 16.83 GEAR BOX WITH REVERSER



DRIVE LINE TRUCK

W/ 16.83 GEAR BOX WITH REVERSER

ITEM	PART #	QTY	DESCRIPTION	ITEM	PART #	QTY	DESCRIPTION
1	102102	1	GEAR BOX K16.83	28	300826	8	NUT (14Z24, 16Z24)
2	102471	10	SCREW	*29	NPN	1	DRIVE SHAFT
3	101323	10	WASHER	*30	102388	1	SHEAR CLUTCH W/ CROSS & YOKE
4	A15707	1	INPUT ADAPTER ASS'Y	31	4485	1	YOKE
5	15167	1	INPUT ADAPTER SHAFT	32	102057	1	CROSS
6	A15170	1	ADAPTER FLANGE ASS'Y	*33	102331	1	SHEAR CLUTCH
7	101827	2	BEARING	*34	***	1	SHEAR BOLT
8	10983	4	KEY	35	102574	1	NUT
9	100598	3	YOKE, BOLT ON	36	16646	2	KEY
10	100882	3	U-BOLT KIT	*37	A9560	1	GTD 16"
11	102366	1	GREASE ZERK	*37	A9561	1	GTD 19 1/4"
12	100272	12	LOCK WASHER (12Z24)	*37	A9562	1	GTD 22 3/4"
12	100272	16	LOCK WASHER (14Z24, 16Z24)	38	102131	4	SCREW
13	101444	4	SCREW	39	100838	8	FLAT WASHER (12Z24)
14	102116	1	DRIVE SHAFT ASS'Y WELDED	39	100838	12	FLAT WASHER (14Z24, 16Z24)
15	NPN	1	YOKE - SPICER # 2-3-8001 kx	40	102223	4	NUT
16	100785	5	CROSS	41	18142	1	GTD HANGER
17	101867	2	YOKE, SNAP RING	42	18438	1	KEY
18	16339	2	KEY	43	101874	2	SPROCKET, CHAIN COUPLER
19	15060	1	PLATE, GEAR BOX HANGER - WELD ON	44	NPN	1	KEY (391-1781-021)
20	102494	4	SCREW	45	101875	1	CHAIN
21	100170	4	LOCK WASHER	46	101876	1	CHAIN COUPLER COVER
22	100297	4	NUT	47	100884	1	DRIVE SHAFT ASS'Y UNWELDED
23	102225	1	REVERSER, GEAR BOX 1:1	48	100881	1	YOKE, SPLINED
24	15178	1	HANGER 4 3/4" x 7" (12Z24, 14Z24, 16Z24)	49	16391	1	YOKE
24	15179	1	HANGER 6" x 7" (14Z24, 16Z24)	50	100241	2	SET SCREW
25	15180	1	BEARING ANGLE (12Z24)	51	4389	1	SHEAR YOKE
25	15180	2	BEARING ANGLE (14Z24, 16Z24)	52	4393	1	HUB, 1 1/4 BORE
26	100055	1	BEARING (12Z24)	53	4391	24	BALL BEARING
26	100055	2	BEARING (14Z24, 16Z24)	54	4390	1	GREASE ZERK
27	102482	4	SCREW (12Z24)	55	101661	1	SCREW
27	102482	8	SCREW (14Z24, 16Z24)	56	100271	1	LOCK WASHER
28	300826	4	NUT (12Z24)	57	100254	1	NUT

NOTE: *37 GTD MEASURED LENGTH IS FROM CENTER TO CENTER OF SHAFTS.

*29 WHEN ORDERING MEASURE LENGTH AND DIAMETER.

*30 & *33 DO NOT INCLUDE ITEMS *34 & *35.

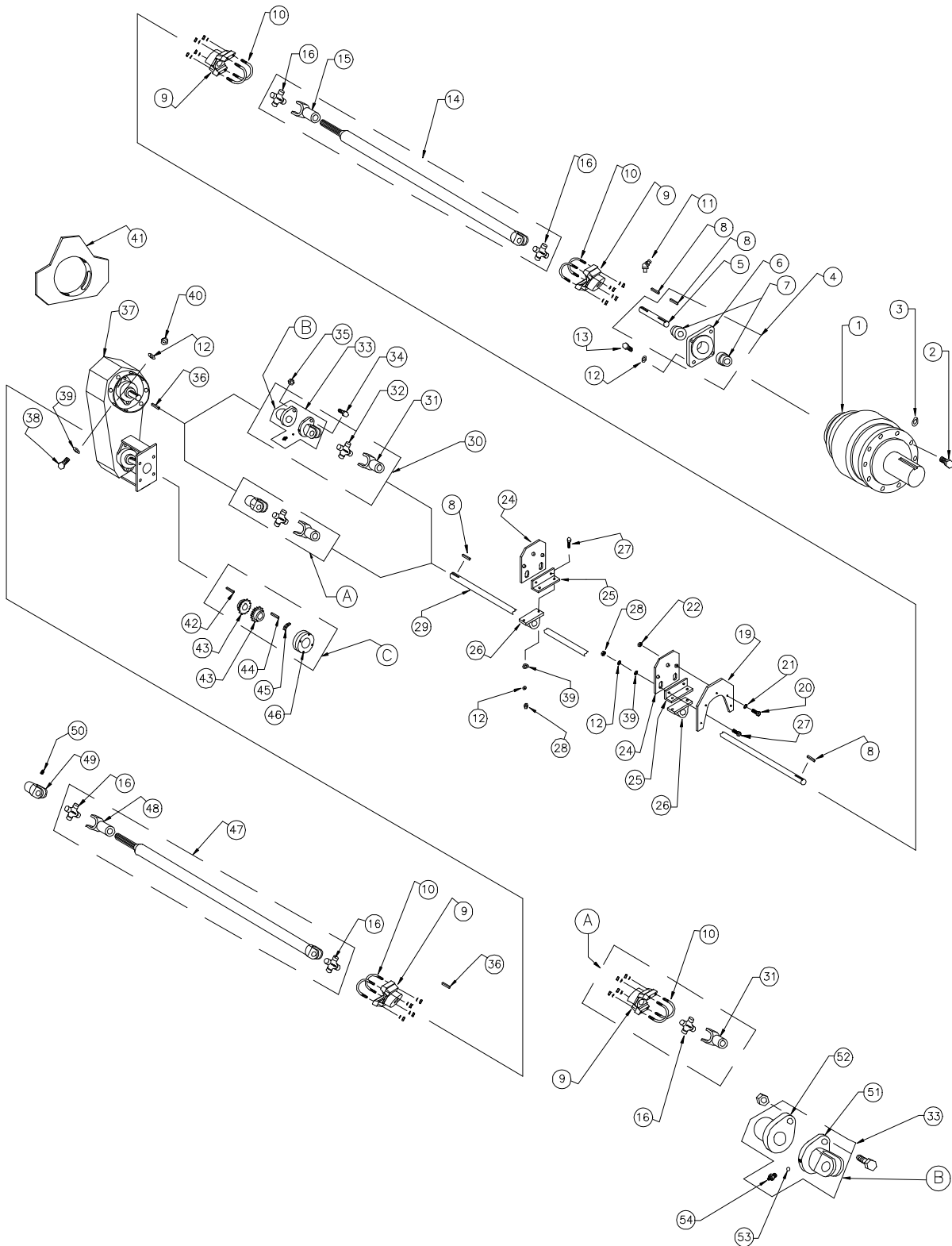
*34 REVIEW CHART TO DETERMINE SHEAR BOLT USED.

NPN - NO PART NUMBER

MIXER	PART #	GRADE	SHEAR POINT
12Z24 TRUCK	102571	GRADE-2	SHANK
14Z24-16Z24 TRUCK	102572	GRADE-5	THREADS

DRIVE LINE TRUCK

W/ 16.83 GEAR BOX, W/O REVERSER



DRIVE LINE TRUCK

W/ 16.83 GEAR BOX W/O REVERSER

ITEM	PART #	QTY	DESCRIPTION	ITEM	PART #	QTY	DESCRIPTION
1	102102	1	GEAR BOX K16.83	*29	NPN	1	DRIVE SHAFT
2	102471	10	SCREW	*30	102388	1	SHEAR CLUTCH W/ CROSS & YOKE
3	101323	10	WASHER	31	4485	1	YOKE
4	A15707	1	INPUT ADAPTER ASS'Y	32	102057	1	CROSS
5	15167	1	INPUT ADAPTER SHAFT	*33	102331	1	SHEAR CLUTCH
6	A15170	1	ADAPTER FLANGE ASS'Y	*34	***	1	SHEAR BOLT
7	101827	2	BEARING	35	102574	1	NUT
8	10983	4	KEY	36	16646	2	KEY
9	100598	3	YOKE, BOLT ON	*37	A9560	1	GTD 16"
10	100882	3	U-BOLT KIT	*37	A9561	1	GTD 19 1/4"
11	102366	1	GREASE ZERK	*37	A9562	1	GTD 22 3/4"
12	100272	16	LOCK WASHER (12Z24)	38	102131	4	SCREW
12	100272	20	LOCK WASHER (14Z24, 16Z24)	39	100838	12	FLAT WASHER (12Z24)
13	101444	4	SCREW	39	100838	16	FLAT WASHER (14Z24, 16Z24)
14	102116	1	DRIVE SHAFT ASS'Y WELDED	40	102223	4	NUT
15	NPN	1	YOKE - SPICER # 2-3-8001 kx	41	18142	1	GTD HANGER
16	100785	4	CROSS	42	18438	1	KEY
19	15060	1	PLATE, GEAR BOX HANGER - WELD ON	43	101874	2	SPROCKET, CHAIN COUPLER
20	100692	3	SCREW	44	NPN	1	KEY (391-1781-021)
21	100271	3	LOCK WASHER	45	101875	1	CHAIN
22	100254	3	NUT	46	101876	1	CHAIN COUPLER COVER
24	15935	2	HANGER 7" x 7 1/2" (12Z24)	47	100884	1	DRIVE SHAFT ASS'Y UNWELDED
24	15935	3	HANGER 7" x 7 1/2" (14Z24, 16Z24)	48	100881	1	YOKE, SPLINED
25	15180	2	BEARING ANGLE (12Z24)	49	16391	1	YOKE
25	15180	3	BEARING ANGLE (14Z24, 16Z24)	50	100241	2	SET SCREW
26	100055	2	BEARING (12Z24)	51	4389	1	SHEAR YOKE
26	100055	3	BEARING (14Z24, 16Z24)	52	4393	1	HUB, 1 1/4 BORE
27	102482	8	SCREW (12Z24)	53	4391	24	BALL BEARING
27	102482	12	SCREW (14Z24, 16Z24)	54	4390	1	GREASE ZERK
28	300826	8	NUT (12Z24)				
28	300826	12	NUT (14Z24, 16Z24)				

NOTE: *37 GTD MEASURED LENGTH IS FROM CENTER TO CENTER OF SHAFTS.

*29 WHEN ORDERING MEASURE LENGTH AND DIAMETER.

*30 & *33 DO NOT INCLUDE ITEMS *34 & *35.

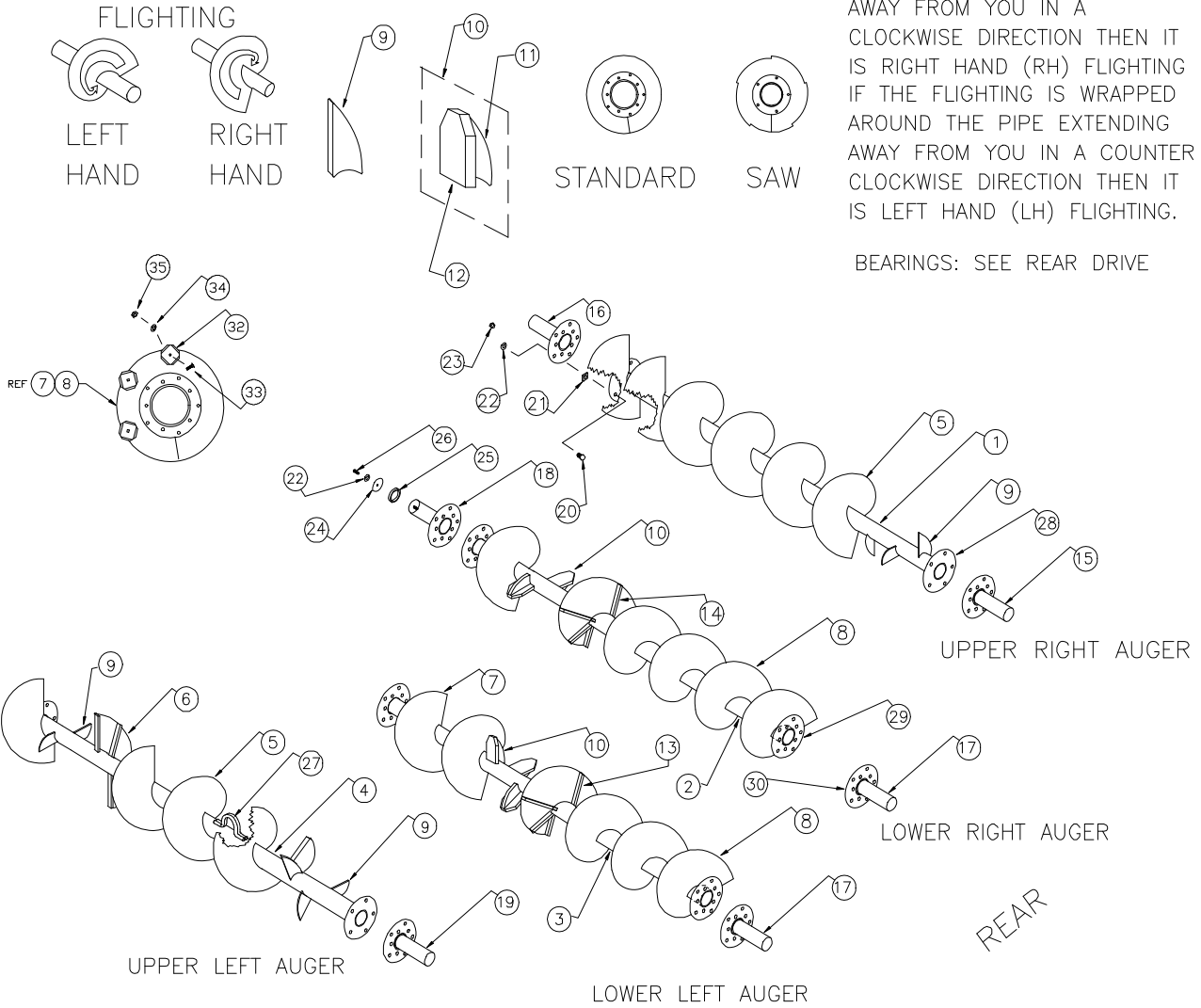
*34 REVIEW CHART TO DETERMINE SHEAR BOLT USED.

NPN - NO PART NUMBER

MIXER	PART #	GRADE	SHEAR POINT
12Z24 TRUCK	102571	GRADE-2	SHANK
14Z24-16Z24 TRUCK	102572	GRADE-5	THREADS

AUGER ASSEMBLY

TYPICAL EXAMPLE



TO DETERMINE FLIGHTING TYPE:

COMPARE THE FLIGHTING WITH THE THREADS OF A BOLT AND IF THE FLIGHTING IS WRAPPED AROUND THE PIPE EXTENDING AWAY FROM YOU IN A CLOCKWISE DIRECTION THEN IT IS RIGHT HAND (RH) FLIGHTING IF THE FLIGHTING IS WRAPPED AROUND THE PIPE EXTENDING AWAY FROM YOU IN A COUNTER CLOCKWISE DIRECTION THEN IT IS LEFT HAND (LH) FLIGHTING.

BEARINGS: SEE REAR DRIVE

NOTE:

THESE ARE NOT ACTUAL FLIGHTING ARRANGEMENTS, THESE DRAWINGS ARE FOR ILLUSTRATION ONLY. PLEASE CHECK AUGER TUBE DIAMETER, ORIGINAL FLIGHTING SIZE, AND FLIGHTING ARRANGEMENT BEFORE ORDERING REPLACEMENT FLIGHTING. PLEASE SPECIFY AR OR MILD STEEL. SEE AUGER ORDER FORM.

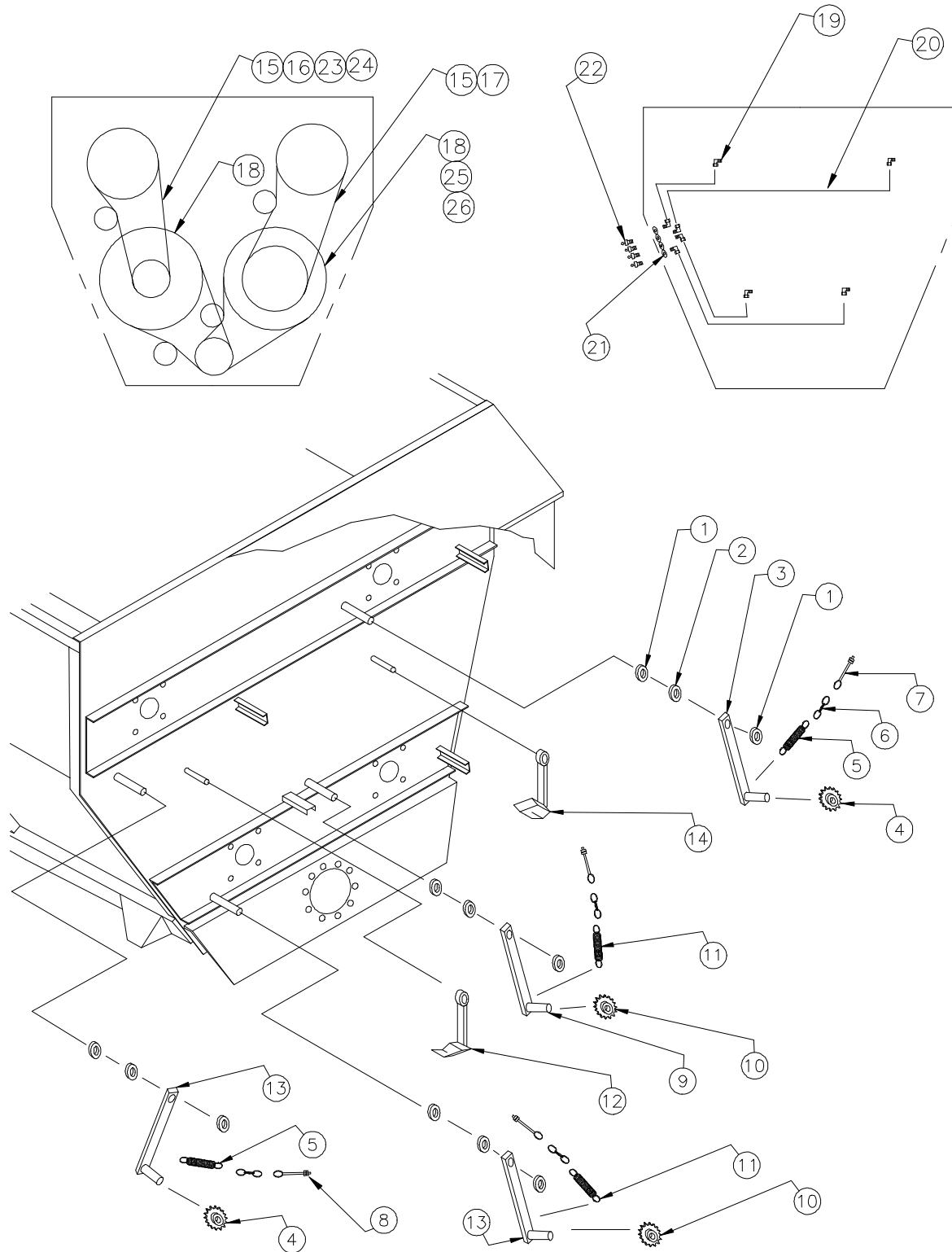
AUGER ASSEMBLY

ITEM	PART #	QTY	DESCRIPTION	ITEM	PART #	QTY	DESCRIPTION
1	**		AUGER ASS'Y, UPPER RIGHT	18	18478	2	STUB SHAFT, LOWER FRONT
2	**		AUGER ASS'Y, LOWER RIGHT	19	18519	1	STUB SHAFT, UPPER REAR, LH
3	**		AUGER ASS'Y, LOWER LEFT	20	100555	40	SCREW
4	**		AUGER ASS'Y, UPPER LEFT	21	12719	AR	SHIM
5	18674	AR	FLIGHTING, RH, 3/8 x 24 OD x 18P x 8 5/8 ID SAW	22	100554	42	LOCK WASHER
6	18675	AR	FLIGHTING, LH, 3/8 x 24 OD x 18P x 8 5/8 ID SAW	23	100252	40	NUT
7	18669	AR	FLIGHTING, RH, 1/2 x 22 1/4 OD x 16 11/16P x 10 3/4 ID - std.	24	15404	2	WASHER, SHAFT SPACER
8	18668	AR	FLIGHTING, LH, 1/2 x 22 1/4 OD x 16 11/16P x 10 3/4 ID - std.	25	15403	2	SHAFT SPACER RING
9	18600	AR	KICKER, CURVED	26	101082	2	SCREW
10	18976	AR	KICKER, PADDLE ASSEMBLY	27	16392	8	AUGER HOOK
11	18804	AR	KICKER BRACE	28	15175	4	UPPER AUGER FLANGE PLATE
12	18805	AR	KICKER PADDLE	29	18477	4	LOWER AUGER FLANGE PLATE
13	18657	AR	BRACE, 1/2 x 1 1/2 x 5	30	18476	8	STUB SHAFT FLANGE PLATE
14	16450	AR	BRACE, 1/2 x 1 1/2 x 6 3/4	32	102868	112	KNIFE, LOWER AUGER
15	14401	1	STUB SHAFT, UPPER REAR, RH	33	101996	112	SCREW
16	14544	2	STUB SHAFT, UPPER FRONT	34	100271	112	LOCK WASHER
17	18518	2	STUB SHAFT, LOWER REAR	35	100254	112	HEX NUT

NOTE: ** DUE TO VARIOUS AUGER CONFIGURATIONS, PLEASE CHECK YOUR AUGER BEFORE ORDERING.
AR - AS REQUIRED

REAR DRIVE ASSEMBLY

WITH 140 MAIN DRIVE CHAIN



REAR DRIVE ASSEMBLY

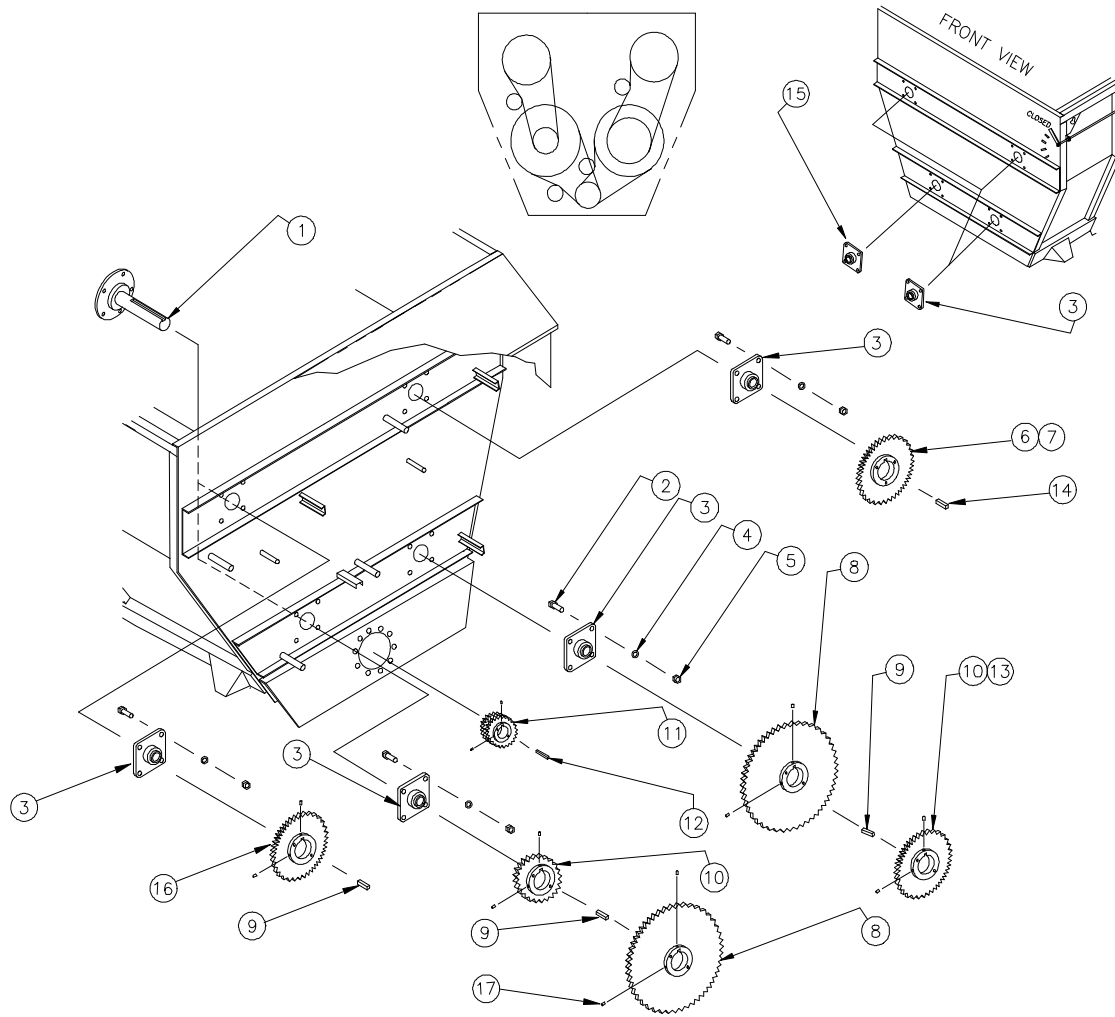
WITH 140 MAIN DRIVE CHAIN

ITEM	PART #	QTY	DESCRIPTION	ITEM	PART #	QTY	DESCRIPTION
1	101829	8	COLLAR W/ SET SCREW	14	A18102	1	OILER ASS'Y
2	102355	4	BEARING, NYLON	15	102967	2	DRIVE CHAIN (W/ CONN.) 100 x 101 (12Z24, 14Z24)
*3	15365	1	IDLER ARM	16	103014	1	DRIVE CHAIN (W/ CONN.) 100 x 99 (16Z24)
4	A13375	2	SPROCKET	17	103015	1	DRIVE CHAIN (W/ CONN.) 100 x 106 (16Z24)
5	101831	2	SPRING 8"	18	102955	2	DRIVE CHAIN (W/ CONN.) 140 x 58
6	7070514	AR	CHAIN	19	102797	8	90° COMP FITTING
7	101840	4	EYE BOLT	20	6060031	1	ALUMINUM TUBING 16'
8	100254	8	NUT	21	100300	4	WASHER, FLAT
*9	A15937	1	IDLER ARM	22	100218	4	GREASE FITTING, 1/8 NPT
10	14900	2	SPROCKET	23	100316	AR	CONNECTOR LINK, 100
11	101832	2	SPRING	24	100315	AR	OFFSET LINK, 100
12	A18260	1	OILER ASS'Y	25	102357	AR	CONNECTOR LINK, 140
*13	A15012	2	IDLER ARM	26	102953	AR	OFFSET LINK, 140

NOTE: *3, *9, & *13 REQUIRE NYLON BEARINGS (#2).
 23, 24, 25, 26 - NOT SHOWN
 AR - AS REQUIRED

REAR DRIVE ASSEMBLY

WITH 140 MAIN DRIVE CHAIN



REAR DRIVE ASSEMBLY

WITH 140 MAIN DRIVE CHAIN

ITEM PART # QTY DESCRIPTION

1	A18519	1	STUB SHAFT, UPPER LH
1	A14401	3	STUB SHAFT
2	100555	32	SCREW
3	101701	7	BEARING
4	100554	32	LOCK WASHER
5	100252	32	NUT
6	102966	1	SPROCKET (60 TOOTH - 100 CHAIN)
7	102968	1	BUSHING, SPLIT TAPER R1 TYPE 2
8	102413	2	SPROCKET (48 TOOTH - 140 CHAIN)
9	18560	3	KEY (12Z24, 14Z24)
9	19065	3	KEY (16Z24)

ITEM PART # QTY DESCRIPTION

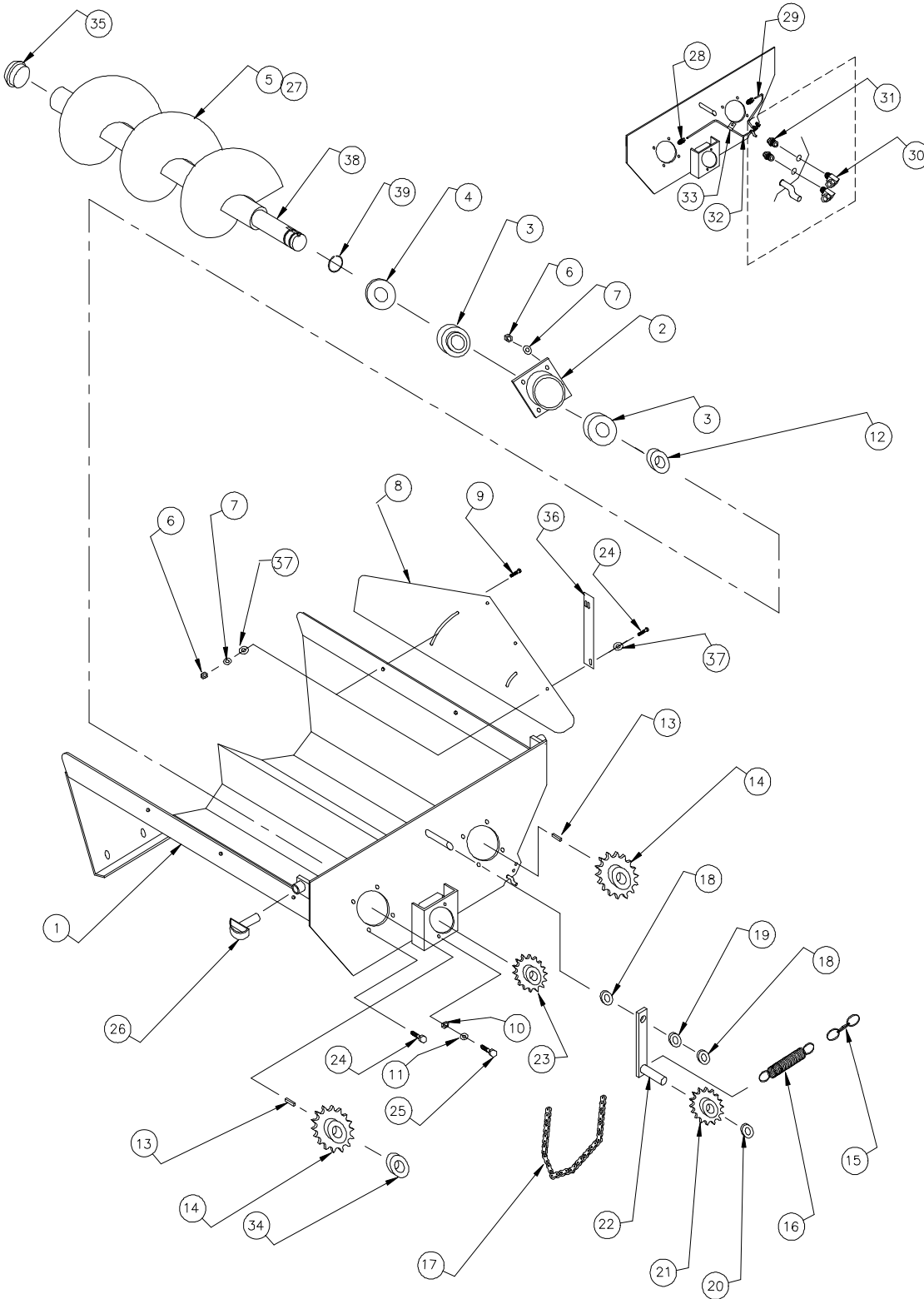
10	102410	2	SPROCKET (23 TOOTH - 100 CHAIN) - 12Z24, 14Z24
10	102410	1	SPROCKET (23 TOOTH - 100 CHAIN) - 16Z24
11	102414	1	SPROCKET, DOUBLE (13-140)
12	4466	1	KEY
13	102412	1	SPROCKET (36 TOOTH - 100 CHAIN) - 16Z24
*14	4395	1	KEY 3/4 x 7/8 x 2 3/4
15	102455	1	BEARING, 3 7/16"
16	102965	1	SPROCKET (60 TOOTH - 100 CHAIN) - 12Z24, 14Z24
16	102420	1	SPROCKET (40 TOOTH - 100 CHAIN) - 16Z24
17	4467	12	SET SCREW 3/4 - 10 x 3/4

NOTE: ALWAYS DETERMINE ACTUAL NUMBER OF TEETH ON SPROCKETS BEFORE ORDERING.

*14 ALSO AVAILABLE WITH BUSHING; ITEM 7, P/N 102968.

DISCHARGE

FORMED BOTTOM



DISCHARGE

FORMED BOTTOM

ITEM	PART #	QTY	DESCRIPTION	ITEM	PART #	QTY	DESCRIPTION
*1	A16616	1	DISCHARGE BOTTOM ASS'Y (27.5")	17	15131	1	CHAIN
*1	A16021	1	DISCHARGE BOTTOM ASS'Y (34.5")	18	101830	2	SET COLLAR
*1	A16669	1	DISCHARGE BOTTOM ASS'Y (42.5")	19	102003	1	BUSHING
2	A14590	2	AUGER BEARING HOUSING	20	NSS	1	BEARING LOCK COLLAR
3	16819	4	BEARING (1 7/16 ID)	21	A15133	1	SPROCKET
4	15617	2	BEARING CAP	22	A15013	1	TENSIONER ARM
*5	A16619	2	DISCHARGE AUGER (27.5")	23	102128	1	SPROCKET
*5	A14500	2	DISCHARGE AUGER (34.5")	24	100240	12	SCREW
*5	A15127	2	DISCHARGE AUGER (42.5")	25	100230	2	SCREW
6	100254	16	NUT	26	A15285	2	PULL PIN, DISCHARGE
7	100271	16	LOCK WASHER	27	15166	AR	FLIGHTING, (10" PITCH PER FLIGHT)
*8	16604	2	DISCHARGE HANGER (27.5")	28	102759	2	FITTING, STRAIGHT COMP
*8	16788	2	DISCHARGE HANGER (34.5")	29	6060031	1	TUBE, 6 1/2" LONG
*8	16789	2	DISCHARGE HANGER (42.5")	30	102753	2	FITTING 90° COMP
*8	NPN	2	HANGER HALF, WITH HYD. LIFT	31	102454	2	GREASE ZERK
*8	NPN	2	HANGER HALF, WITH HYD. LIFT	32	6060031	1	TUBE, 24" LONG
9	102096	4	SCREW	33	102348	1	HOSE MOUNT CLAMP
10	100250	2	NUT	34	101964	2	BUSHING
11	100272	2	LOCK WASHER	35	102578	2	CAP, AUGER END
12	NSS	2	BEARING LOCK COLLAR	36	16078	2	BAR, DISCHARGE SPACER
13	15620	2	KEY	37	100300	16	WASHER, FLAT
14	101963	2	SPROCKET	38	14502	2	DISCHARGE AUGER SHAFT
15	15132	1	CHAIN, 6 LINKS	39	103040	2	SNAP RING
16	101831	1	SPRING				

NOTE: *1, *5 WHEN ORDERING A NEW DISCHARGE, HANGER PLATE, AUGER, AUGER FLIGHTING, BOTTOM, OR LINERS MEASURE DISCHARGE LENGTH. MEASUREMENTS ARE TAKEN FROM UNDER EITHER AUGER, FROM THE BACK PLATE TO THE END (WHERE CHUTE BEGINS). SEE PAGE 34 FOR VISUAL REFERENCE.

*8 SOLD IN SETS ONLY

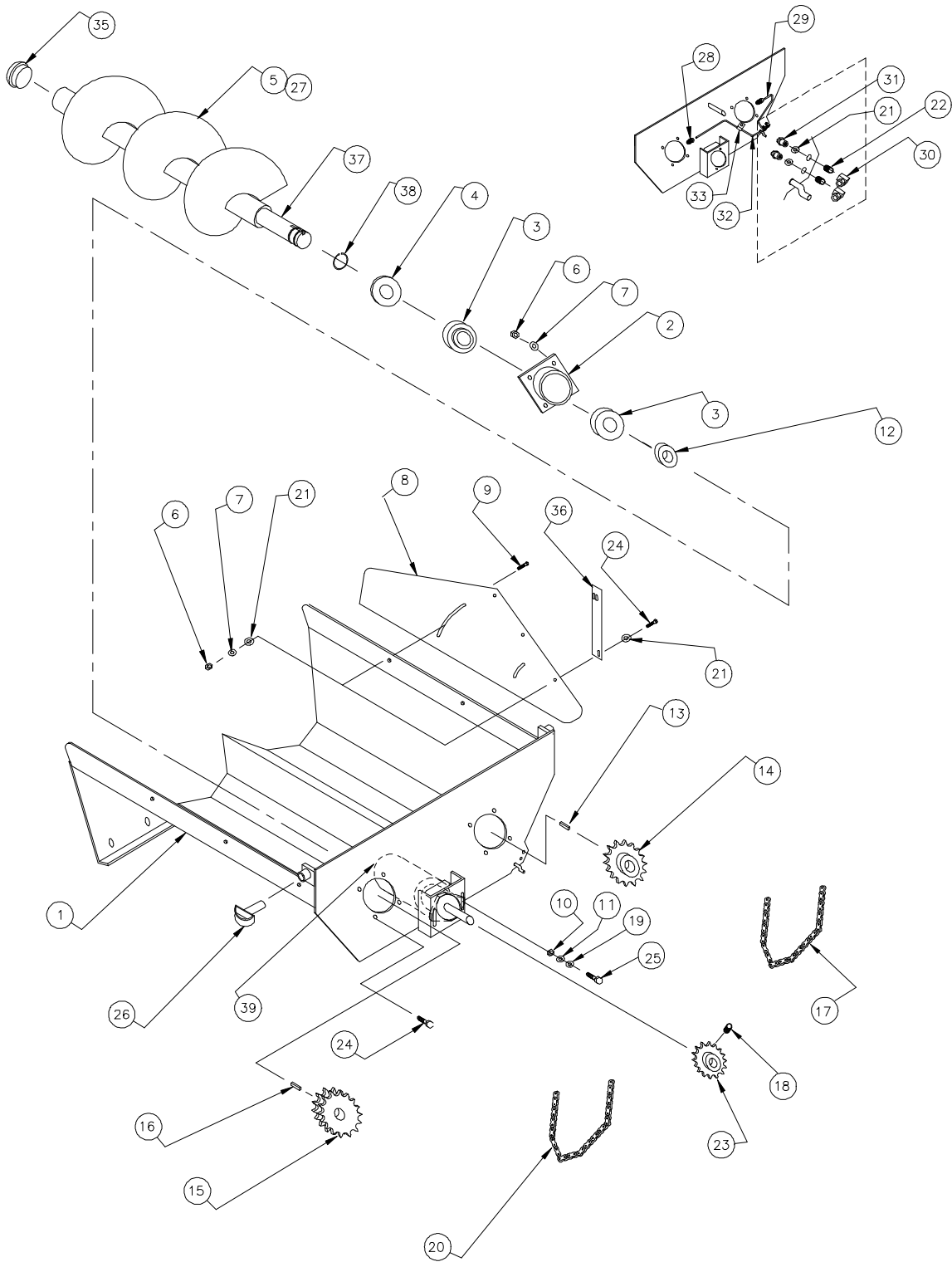
AR - AS REQUIRED

NPN - NO PART NUMBER

NSS - NOT SOLD SEPARATELY

DISCHARGE

DUAL FLAT BOTTOM



DISCHARGE

DUAL FLAT BOTTOM

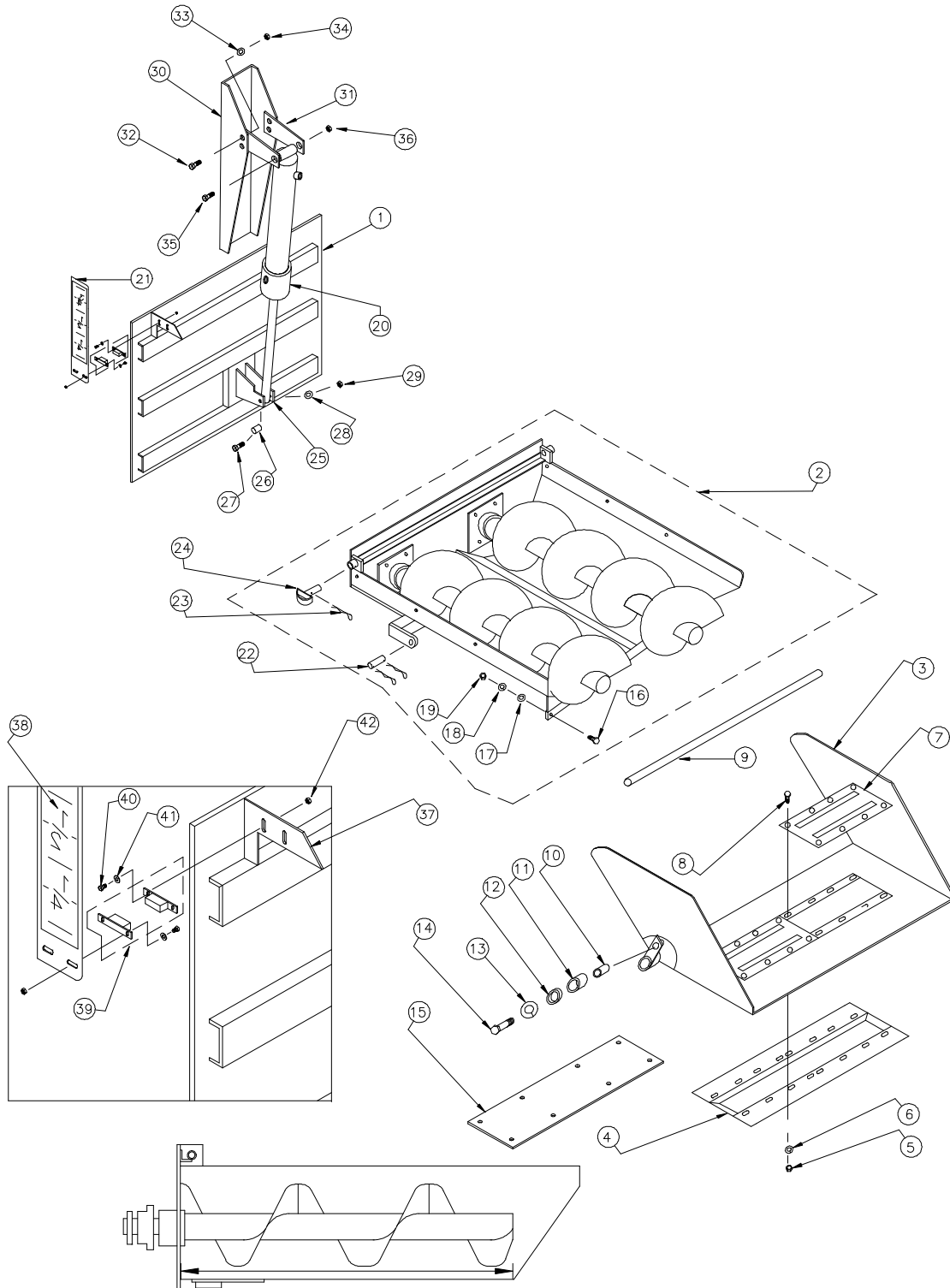
ITEM	PART #	QTY	DESCRIPTION	ITEM	PART #	QTY	DESCRIPTION
	A17982	1	DISCHARGE ASS'Y FLT BTM DUAL SHT	15	102778	1	SPROCKET
	A17992	1	DISCHARGE ASS'Y FLT BTM DUAL MED	16	10983	1	KEY
	A17997	1	DISCHARGE ASS'Y FLT BTM DUAL EXT	17	102782	1	CHAIN
*1	A17978	1	DISCHARGE BOTTOM ASS'Y (27.5")	18	100703	6	SET SCREW
*1	A17990	1	DISCHARGE BOTTOM ASS'Y (34.5")	19	100838	2	FLAT WASHER
*1	A17995	1	DISCHARGE BOTTOM ASS'Y (42.5")	20	102783	1	CHAIN
2	A14590	2	AUGER BEARING HOUSING	21	100300	18	FLAT WASHER
3	16819	4	BEARING (1 7/16 ID)	22	102798	2	FITTING, 1/8 NPT CLOSE NIPPLE
4	15617	2	BEARING CAP	23	102128	1	SPROCKET
*5	A16619	2	DISCHARGE AUGER (27.5")	24	100240	12	SCREW
*5	A14500	2	DISCHARGE AUGER (34.5")	25	100230	2	SCREW
*5	A15127	2	DISCHARGE AUGER (42.5")	26	A15285	2	PULL PIN, DISCHARGE
6	100254	16	NUT	27	15166	AR	FLIGHTING, (10" PITCH PER FLIGHT)
7	100271	16	LOCK WASHER	28	102759	2	FITTING, STRAIGHT COMP
*8	17958	2	DISCHARGE HANGER (27.5")	29	6060031	1	TUBE, 6 1/2" LONG
*8	17993	2	DISCHARGE HANGER (34.5")	30	102797	2	FITTING 90° COMP. (F)
*8	17998	2	DISCHARGE HANGER (42.5")	31	102454	2	GREASE ZERK (F)
*8	NPN	2	HANGER HALF, WITH HYD. LIFT	32	6060031	1	TUBE, 24" LONG
*8	NPN	2	HANGER HALF, WITH HYD. LIFT	33	102348	1	HOSE MOUNT CLAMP
9	102096	4	SCREW	35	102578	2	CAP, AUGER END
10	100250	2	NUT	36	16078	2	BAR, DISCHARGE SPACER
11	100272	2	LOCK WASHER	37	14502	2	DISCHARGE AUGER SHAFT
12	NSS	2	BEARING LOCK COLLAR	38	103040	2	SNAP RING
13	19083	1	KEY	*39	102980	1	HYDRAULIC MOTOR
14	101845	1	SPROCKET				

NOTE: *1, *5 WHEN ORDERING A NEW DISCHARGE, HANGER PLATE, AUGER, AUGER FLIGHTING, BOTTOM, OR LINERS; MEASURE DISCHARGE LENGTH. MEASUREMENTS ARE TAKEN FROM UNDER EITHER AUGER, FROM THE BACK PLATE TO THE END (WHERE CHUTE BEGINS). SEE PAGE 34 FOR VISUAL REFERENCE.
*39 USE TRW ROSS HYDRAULIC MOTOR # 102980 AS PRIMARY MOTOR. CHAR-LYNN # 101705 MAY BE USED IF NECESSARY.

*8 SOLD IN SETS ONLY
AR - AS REQUIRED
NPN - NO PART NUMBER
NSS - NOT SOLD SEPARATELY

DISCHARGE

DUAL AUGER W/ DOOR ASSEMBLY



DISCHARGE LENGTH IS MEASURED BETWEEN THESE POINTS.

DISCHARGE

DUAL AUGER W/ DOOR ASSEMBLY

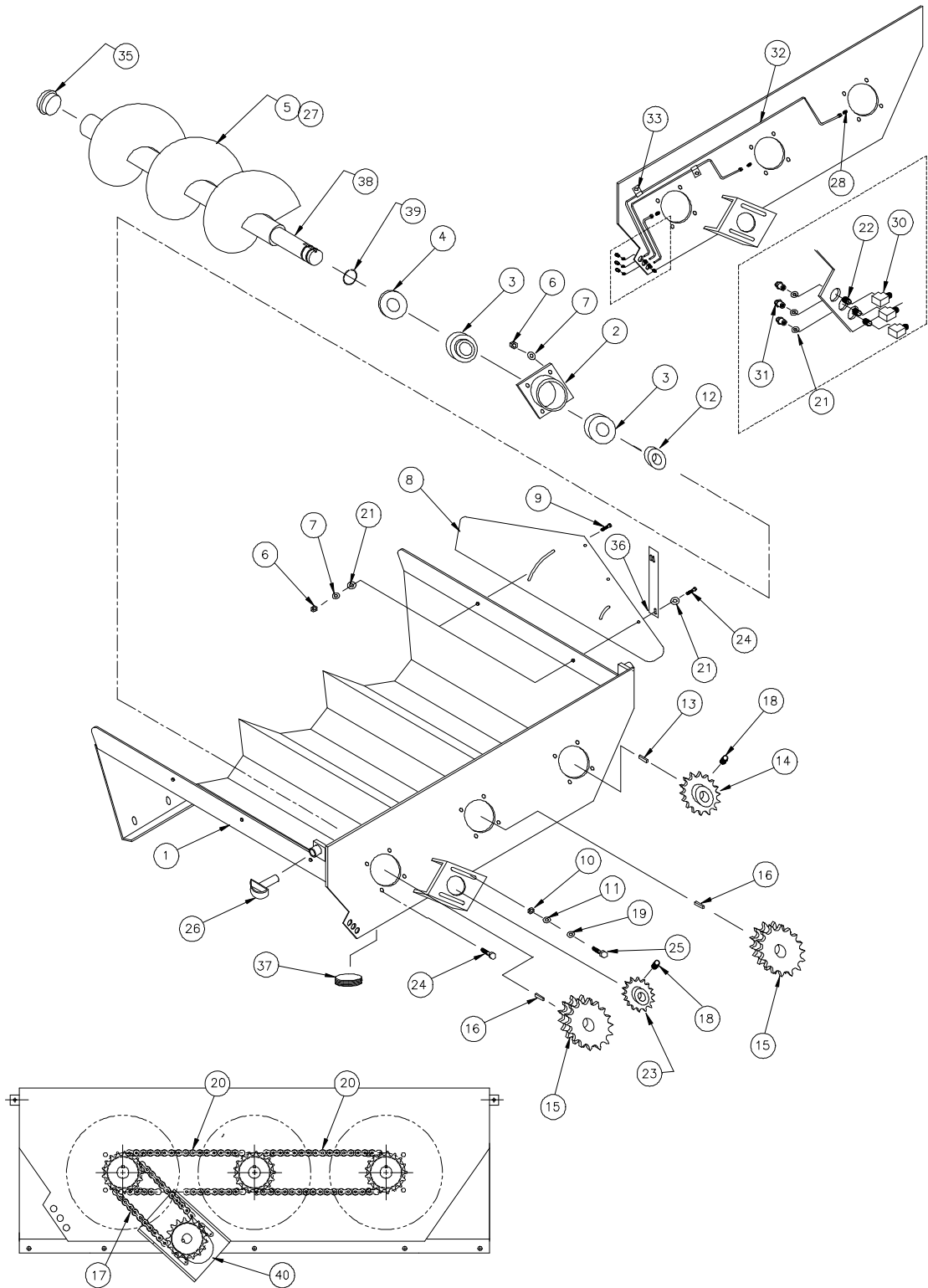
ITEM	PART #	QTY	DESCRIPTION	ITEM	PART #	QTY	DESCRIPTION
1	16026	1	DISCHARGE DOOR	22	14533	1	CYLINDER PIN
*2	17982	1	DISCHARGE ASS'Y (27.5")	23	101018	4	CLIP, HAIR PIN
*2	17992	1	DISCHARGE ASS'Y (34.5")	24	A15285	2	DISCHARGE HINGE PULL PIN
*2	17997	1	DISCHARGE ASS'Y (42.5")	25	18291	2	DISCHARGE DOOR CYLINDER MOUNT
3	A17988	1	DROP CHUTE WITH MAGNET GUARD	26	16032	1	BUSHING
4	A15622	1	MAGNET GUARD	27	101895	1	SCREW
5	100297	16	NUT	28	100713	1	FLAT WASHER
6	100170	16	LOCK WASHER	29	100297	2	NUT
7	100985	2	MAGNET 18"	30	19059	1	TUB CYLINDER MOUNT
8	102283	16	SCREW	31	19061	2	BOLT-ON CYLINDER MOUNT
9	14572	1	SHAFT, HINGE	32	100226	4	SCREW
10	14453	1	TUBE, CYL. MNT. HINGE	33	100272	4	LOCK WASHER
11	14573	1	BUSHING LONG	34	100250	4	NUT
12	14574	1	BUSHING SHORT	35	101443	1	SCREW
13	100272	1	LOCK WASHER	36	101009	1	NUT
14	100796	1	SCREW	37	15952	1	DOOR POSITION POINTER
15	16792	1	COVER, MAGNET GUARD	38	101181	1	DOOR GUAGE DECAL, TRUCK
16	100240	7	SCREW	38	101992	1	DOOR GUAGE DECAL, TRAILER
17	100300	7	FLAT WASHER	39	102401	2	MAGNETIC SWITCH
18	100271	7	LOCK WASHER	40	100175	4	SCREW
19	100254	7	NUT	41	102254	4	WASHER
20	17366	1	DISCHARGE DOOR CYLINDER	42	102253	4	NUT
21	15953	1	BAR, DOOR POSITION				

NOTE: *2 WHEN ORDERING A NEW DISCHARGE, HANGER PLATE, AUGER, AUGER FLIGHTING, BOTTOM, OR LINERS; MEASURE DISCHARGE LENGTH. MEASUREMENTS ARE TAKEN FROM UNDER EITHER AUGER, FROM THE BACK PLATE TO THE END (WHERE CHUTE BEGINS). SEE ILLUSTRATION ON PAGE 34.

*2 DISCHARGE INCLUDES CHAINS, SPROCKETS, BEARINGS, AND HYDRAULIC MOTOR (SEE PAGE 33, ITEM 39). IT DOES **NOT** INCLUDE DROP CHUTE CYLINDER (SEE PAGE 42 ITEM 37, OR PAGE 47).

DISCHARGE

TRIPLE AUGER



DISCHARGE

TRIPLE AUGER

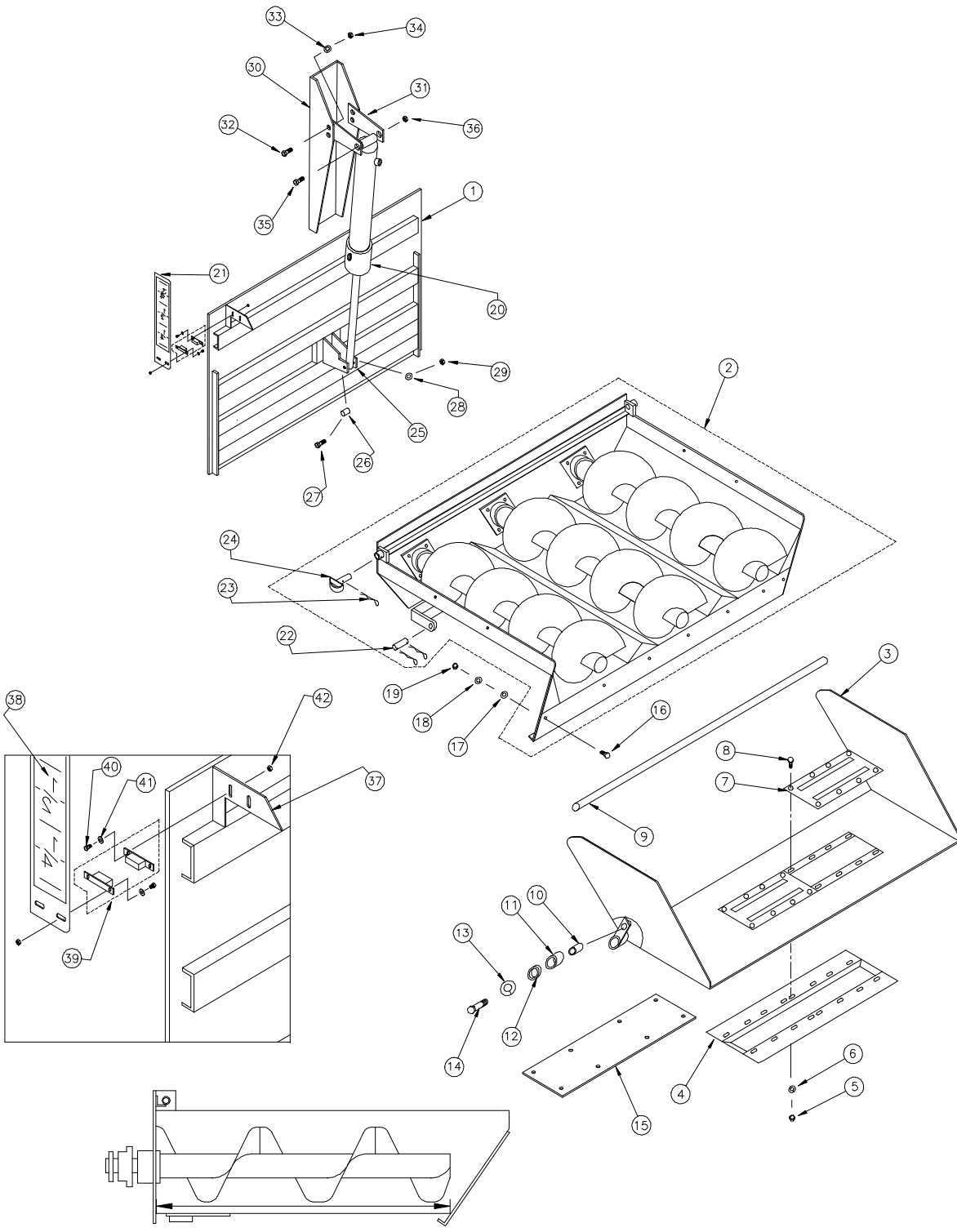
ITEM	PART #	QTY	DESCRIPTION	ITEM	PART #	QTY	DESCRIPTION
	A17902	1	DISCHARGE ASS'Y FLAT BTM TRPL SHT	15	102778	2	SPROCKET
	A18168	1	DISCHARGE ASS'Y FLAT BTM TRPL MED	16	10983	2	KEY
	A18169	1	DISCHARGE ASS'Y FLAT BTM TRPL EXT	17	102765	1	CHAIN
*1	A17899	1	DISCHARGE BOTTOM ASS'Y (27.5")	18	100703	8	SET SCREW
*1	A18170	1	DISCHARGE BOTTOM ASS'Y (34.5")	19	100838	2	FLAT WASHER
*1	A18171	1	DISCHARGE BOTTOM ASS'Y (42.5")	20	102764	2	CHAIN
2	A14590	3	AUGER BEARING HOUSING	21	100300	18	FLAT WASHER
3	16819	6	BEARING (1 7/16 ID)	22	102798	3	FITTING, 1/8 NPT CLOSE NIPPLE
4	15617	3	BEARING CAP	23	102128	1	SPROCKET
*5	A16619	3	DISCHARGE AUGER (27.5")	24	100240	12	SCREW
*5	A14500	3	DISCHARGE AUGER (34.5")	25	100230	2	SCREW
*5	A15127	3	DISCHARGE AUGER (42.5")	26	A15285	2	PULL PIN, DISCHARGE
6	100254	16	NUT	27	15166	AR	FLIGHTING, (10" PITCH PER FLIGHT)
7	100271	16	LOCK WASHER	28	102759	3	FITTING, STRAIGHT COMP
*8	17958	2	DISCHARGE HANGER (27.5")	30	102797	3	FITTING, 90° COMP. (F)
*8	17993	2	DISCHARGE HANGER (34.5")	31	102454	3	GREASE ZERK (F)
*8	17998	2	DISCHARGE HANGER (42.5")	32	6060031	1	TUBE, 6 FT. ALUM.
*8	NPN	2	HANGER HALF, WITH HYD. LIFT	33	102348	2	HOSE MOUNT CLAMP
*8	NPN	2	HANGER HALF, WITH HYD. LIFT	35	102578	3	CAP, AUGER END
9	102096	4	SCREW	36	16078	2	BAR DISCHARGE SPACER
10	100250	2	NUT	37	102078	3	DRAIN PLUG
11	100272	2	LOCK WASHER	38	14502	2	DISCHARGE AUGER SHAFT
12	NSS	2	BEARING LOCK COLLAR	39	103040	2	SNAP RING
13	19083	1	KEY	*40	102980	1	HYDRAULIC MOTOR
14	101845	1	SPROCKET				

NOTE: *1, *5 WHEN ORDERING A NEW DISCHARGE, HANGER PLATE, AUGER, AUGER FLIGHTING, BOTTOM, OR LINERS; MEASURE DISCHARGE LENGTH. MEASUREMENTS ARE TAKEN FROM UNDER ANY AUGER, FROM THE BACK PLATE TO THE END (WHERE CHUTE BEGINS). SEE PAGE 38 FOR VISUAL REFERENCE.
*40 USE TRW ROSS HYDRAULIC MOTOR # 102980 AS PRIMARY MOTOR. CHAR-LYNN # 101705 MAY BE USED IF NECESSARY.

*8 SOLD IN SETS ONLY
AR - AS REQUIRED
NPN - NO PART NUMBER
NSS - NOT SOLD SEPARATELY

DISCHARGE

TRIPLE AUGER W/ DOOR ASSEMBLY



DISCHARGE

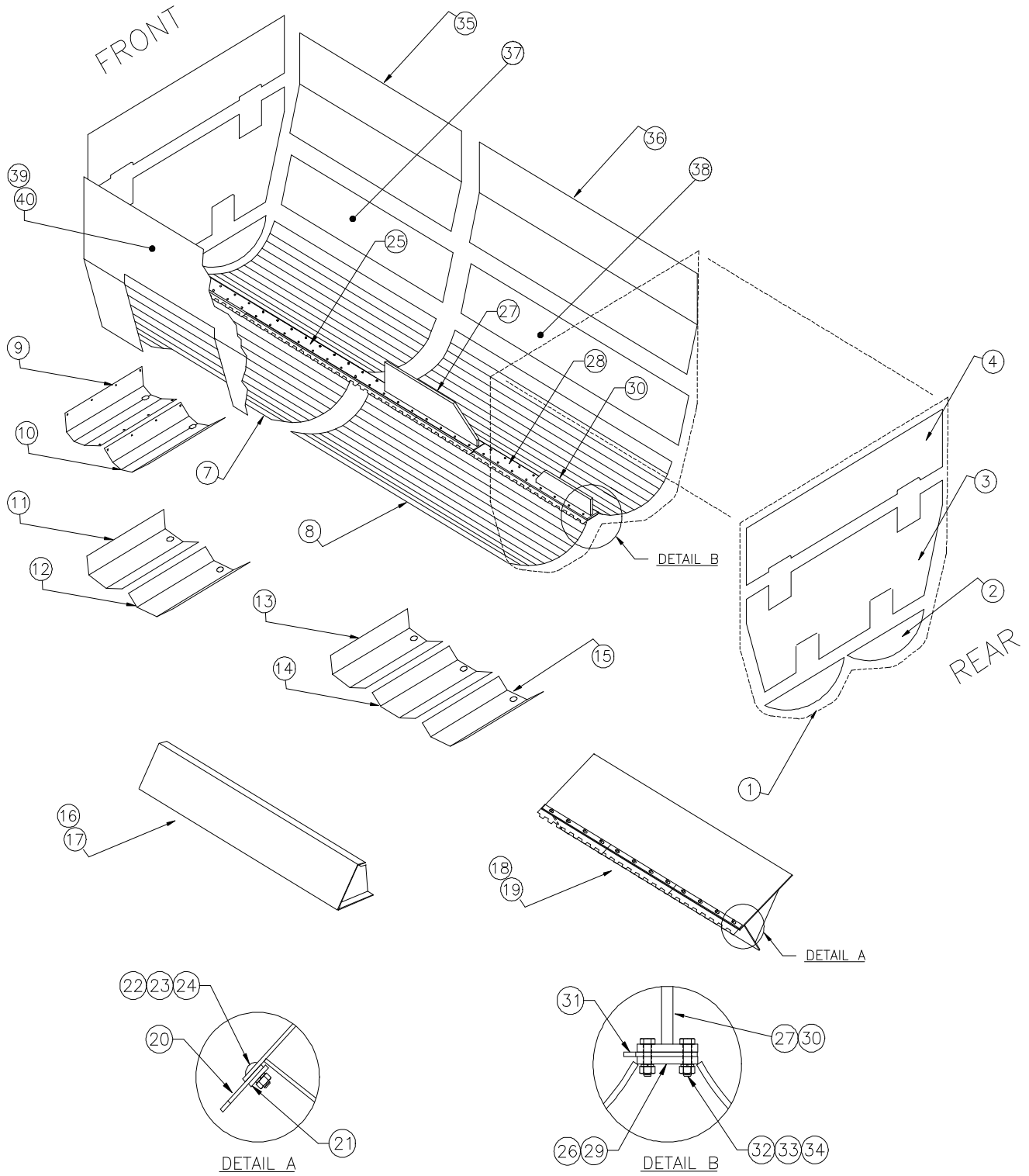
TRIPLE AUGER W/ DOOR ASSEMBLY

ITEM	PART #	QTY	DESCRIPTION	ITEM	PART #	QTY	DESCRIPTION
1	A18110	1	DISCHARGE DOOR	22	14533	1	CYLINDER PIN
*2	A17902	1	DISCHARGE ASS'Y (27.5")	23	101018	4	CLIP, HAIR PIN
*2	A18168	1	DISCHARGE ASS'Y (34.5")	24	A15285	2	DISCHARGE HINGE PULL PIN
*2	A18169	1	DISCHARGE ASS'Y (42.5")	25	18291	2	DISCHARGE DOOR CYLINDER MOUNT
3	A17916	1	DROP CHUTE WITH MAGNET GUARD	26	16032	1	BUSHING
4	A15622	1	MAGNET GUARD	27	101895	1	SCREW
5	100297	16	NUT	28	100713	1	FLAT WASHER
6	100170	16	LOCK WASHER	29	100297	2	NUT
7	100985	2	MAGNET 18"	30	19059	1	TUB CYLINDER MOUNT
8	102283	16	SCREW	31	19061	2	BOLT-ON CYLINDER MOUNT
9	17918	1	SHAFT, HINGE	32	100226	4	SCREW
10	14453	1	TUBE, CYL. MNT. HINGE	33	100272	4	LOCK WASHER
11	14573	1	BUSHING LONG	34	100250	4	NUT
12	14574	1	BUSHING SHORT	35	101443	1	SCREW
13	100272	1	LOCK WASHER	36	101009	1	NUT
14	100796	1	SCREW	37	15952	1	DOOR POSITION POINTER
15	16792	1	COVER, MAGNET GUARD	38	101181	1	DOOR GUAGE DECAL, TRUCK
16	100240	7	SCREW	38	101992	1	DOOR GUAGE DECAL, TRAILER
17	100300	7	FLAT WASHER	39	102401	2	MAGNETIC SWITCH
18	100271	7	LOCK WASHER	40	100175	4	SCREW
19	100254	7	NUT	41	102254	4	WASHER
20	17366	1	DISCHARGE DOOR CYLINDER	42	102253	4	NUT
21	15953	1	BAR, DOOR POSITION				

NOTE: *2 WHEN ORDERING A NEW DISCHARGE, HANGER PLATE, AUGER, AUGER FLIGHTING, BOTTOM, OR LINERS; MEASURE DISCHARGE LENGTH. MEASUREMENTS ARE TAKEN FROM UNDER ANY AUGER, FROM THE BACK PLATE TO THE END (WHERE CHUTE BEGINS). SEE ILLUSTRATION ON PAGE 38.

*2 DISCHARGE INCLUDES CHAINS, SPROCKETS, BEARINGS, AND HYDRAULIC MOTOR (SEE PAGE 37, ITEM 40). IT DOES **NOT** INCLUDE DROP CHUTE CYLINDER (SEE PAGE 42 ITEM 37, OR PAGE 47).

LINERS AND HAY SHELVES



LOWER HAY SHELF HARDWARE

TUB DIVIDER HARDWARE

LINERS & HAY SHELVES

ITEM	PART #	QTY	DESCRIPTION	ITEM	PART #	QTY	DESCRIPTION
1	A9701	2	END LINER ASS'Y (STAINLESS STEEL)	18	18691	2	LOWER HAY SHELF 71 3/4" (12Z24)
1	A9745	2	END LINER ASS'Y (MILD STEEL)	18	18691	1	LOWER HAY SHELF 71 3/4" (14Z24)
2	9702	4	END LINER, BOTTOM (STAINLESS STEEL)	19	18653	1	LOWER HAY SHELF 95 3/4" (14Z24)
2	9748	4	END LINER, BOTTOM (MILD STEEL)	19	18653	2	LOWER HAY SHELF 95 3/4" (16Z24)
3	9703	2	END LINER, MIDDLE (STAINLESS STEEL)	20	18642	7	HAY SHELF CUTTER BAR (12Z24)
3	9747	2	END LINER, MIDDLE (MILD STEEL)	20	18642	8	HAY SHELF CUTTER BAR (14Z24)
4	9704	2	END LINER, TOP (STAINLESS STEEL)	20	18642	9	HAY SHELF CUTTER BAR (16Z24)
4	9746	2	END LINER, TOP (MILD STEEL)	21	18652	5	REINFORCING BAR (12Z24)
7	9912	AR	BOTTOM LINER 6 FT. (STAINLESS STEEL)	21	18652	6	REINFORCING BAR (14Z24)
7	9910	AR	BOTTOM LINER 6 FT. (MILD STEEL)	21	18652	7	REINFORCING BAR (16Z24)
8	9913	AR	BOTTOM LINER 8 FT. (STAINLESS STEEL)	22	102482	20	SCREW (12Z24)
8	9911	AR	BOTTOM LINER 8 FT. (MILD STEEL)	22	102482	24	SCREW (14Z24)
*9	17244	1	DISCHARGE LINER LH (STAINLESS 27.5")	22	102482	28	SCREW (16Z24)
*9	16347	1	DISCHARGE LINER LH (STAINLESS 34.5")	23	100272	20	LOCK WASHER (12Z24)
*9	16534	1	DISCHARGE LINER LH (STAINLESS 42.5")	23	100272	24	LOCK WASHER (14Z24)
*9	9569	1	DISCHARGE LINER LH (MILD 27.5")	23	100272	28	LOCK WASHER (16Z24)
*9	9464	1	DISCHARGE LINER LH (MILD 34.5")	24	300826	20	NUT (12Z24)
*9	9466	1	DISCHARGE LINER LH (MILD 42.5")	24	300826	24	NUT (14Z24)
*10	17245	1	DISCHARGE LINER RH (STAINLESS 27.5")	24	300826	28	NUT (16Z24)
*10	15815	1	DISCHARGE LINER RH (STAINLESS 34.5")	25	18645	1	TUB DIVIDER ASS'Y, FRONT (12Z, 14Z, 16Z24)
*10	16535	1	DISCHARGE LINER RH (STAINLESS 42.5")	26	18467	1	CENTER BAR, FRONT 95 7/8" (12Z, 14Z, 16Z24)
*10	9570	1	DISCHARGE LINER RH (MILD 27.5")	27	18644	1	DIVIDER BAR, FRONT 39" (12Z, 14Z, 16Z24)
*10	9465	1	DISCHARGE LINER RH (MILD 34.5")	28	18697	1	TUB DIVIDER ASS'Y, REAR (12Z24)
*10	9467	1	DISCHARGE LINER RH (MILD 42.5")	28	18685	1	TUB DIVIDER ASS'Y, REAR (14Z24)
*11	17999	1	DISCHARGE LINER LH (STAINLESS 27.5")	28	18647	1	TUB DIVIDER ASS'Y, REAR (16Z24)
*11	18001	1	DISCHARGE LINER LH (STAINLESS 34.5")	29	18695	1	CENTER BAR, REAR 47 7/8" (12Z24)
*11	18003	1	DISCHARGE LINER LH (STAINLESS 42.5")	29	18549	1	CENTER BAR, REAR 71 7/8" (14Z24)
*11	18998	1	DISCHARGE LINER LH (MILD 27.5")	29	18467	1	CENTER BAR, REAR 95 7/8" (16Z24)
*11	18985	1	DISCHARGE LINER LH (MILD 34.5")	30	18696	1	DIVIDER BAR, REAR 23" (12Z24)
*11	18987	1	DISCHARGE LINER LH (MILD 42.5")	30	18684	1	DIVIDER BAR, REAR 47" (14Z24)
*12	18000	1	DISCHARGE LINER RH (STAINLESS 27.5")	30	18646	1	DIVIDER BAR, REAR 71" (16Z24)
*12	18002	1	DISCHARGE LINER RH (STAINLESS 34.5")	31	18733	7	TUB DIVIDER CUTTER BAR (12Z24)
*12	18004	1	DISCHARGE LINER RH (STAINLESS 42.5")	31	18733	8	TUB DIVIDER CUTTER BAR (14Z24)
*12	18997	1	DISCHARGE LINER RH (MILD 27.5")	31	18733	9	TUB DIVIDER CUTTER BAR (16Z24)
*12	18984	1	DISCHARGE LINER RH (MILD 34.5")	32	100230	56	SCREW (12Z24)
*12	18986	1	DISCHARGE LINER RH (MILD 42.5")	32	101697	64	SCREW (14Z24)
*13	18119	1	DISCHARGE LINER LH (STAINLESS 27.5")	32	100230	72	SCREW (16Z24)
*13	18176	1	DISCHARGE LINER LH (STAINLESS 34.5")	33	100272	56	LOCK WASHER (12Z24)
*13	18179	1	DISCHARGE LINER LH (STAINLESS 42.5")	33	100272	64	LOCK WASHER (14Z24)
*13	18988	1	DISCHARGE LINER LH (MILD 27.5")	33	100272	72	LOCK WASHER (16Z24)
*13	18990	1	DISCHARGE LINER LH (MILD 34.5")	34	100250	56	NUT (12Z24)
*13	18992	1	DISCHARGE LINER LH (MILD 42.5")	34	100250	64	NUT (14Z24)
*14	18141	1	DISCHARGE LINER CTR (STAINLESS 27.5")	34	100250	72	NUT (16Z24)
*14	18177	1	DISCHARGE LINER CTR (STAINLESS 34.5")	35	9906	1	UPPER RIGHT SIDE LINER 6 FT. (STAINLESS)
*14	18180	1	DISCHARGE LINER CTR (STAINLESS 42.5")	35	9900	1	UPPER RIGHT SIDE LINER 6 FT. (MILD)
*14	18994	1	DISCHARGE LINER CTR (MILD 27.5")	36	9908	1	UPPER RIGHT SIDE LINER 8 FT. (STAINLESS)
*14	18995	1	DISCHARGE LINER CTR (MILD 34.5")	36	9902	1	UPPER RIGHT SIDE LINER 8 FT. (MILD)
*14	18996	1	DISCHARGE LINER CTR (MILD 42.5")	37	9907	1	LOWER RIGHT SIDE LINER 6 FT. (STAINLESS)
*15	18140	1	DISCHARGE LINER RH (STAINLESS 27.5")	37	9901	1	LOWER RIGHT SIDE LINER 6 FT. (MILD)
*15	18178	1	DISCHARGE LINER RH (STAINLESS 34.5")	38	9909	1	LOWER RIGHT SIDE LINER 8 FT. (STAINLESS)
*15	18181	1	DISCHARGE LINER RH (STAINLESS 42.5")	38	9903	1	LOWER RIGHT SIDE LINER 8 FT. (MILD)
*15	18989	1	DISCHARGE LINER RH (MILD 27.5")	39	9904	1	LEFT SIDE LINER 6 FT. (STAINLESS)
*15	18991	1	DISCHARGE LINER RH (MILD 34.5")	39	9898	1	LEFT SIDE LINER 6 FT. (MILD)
*15	18993	1	DISCHARGE LINER RH (MILD 42.5")	40	9905	1	LEFT SIDE LINER 8 FT. (STAINLESS)
16	18688	2	UPPER HAY SHELF 71 7/8" (12Z24)	40	9899	1	LEFT SIDE LINER 8 FT. (MILD)
16	18688	1	UPPER HAY SHELF 71 7/8" (14Z24)				
17	18648	1	UPPER HAY SHELF 95 3/4" (14Z24)				
17	18648	2	UPPER HAY SHELF 95 3/4" (16Z24)				

NOTE: *9, *10 DUAL AUGER DISCHARGE - FORMED BOTTOM

*11, *12 DUAL AUGER DISCHARGE - FLAT BOTTOM

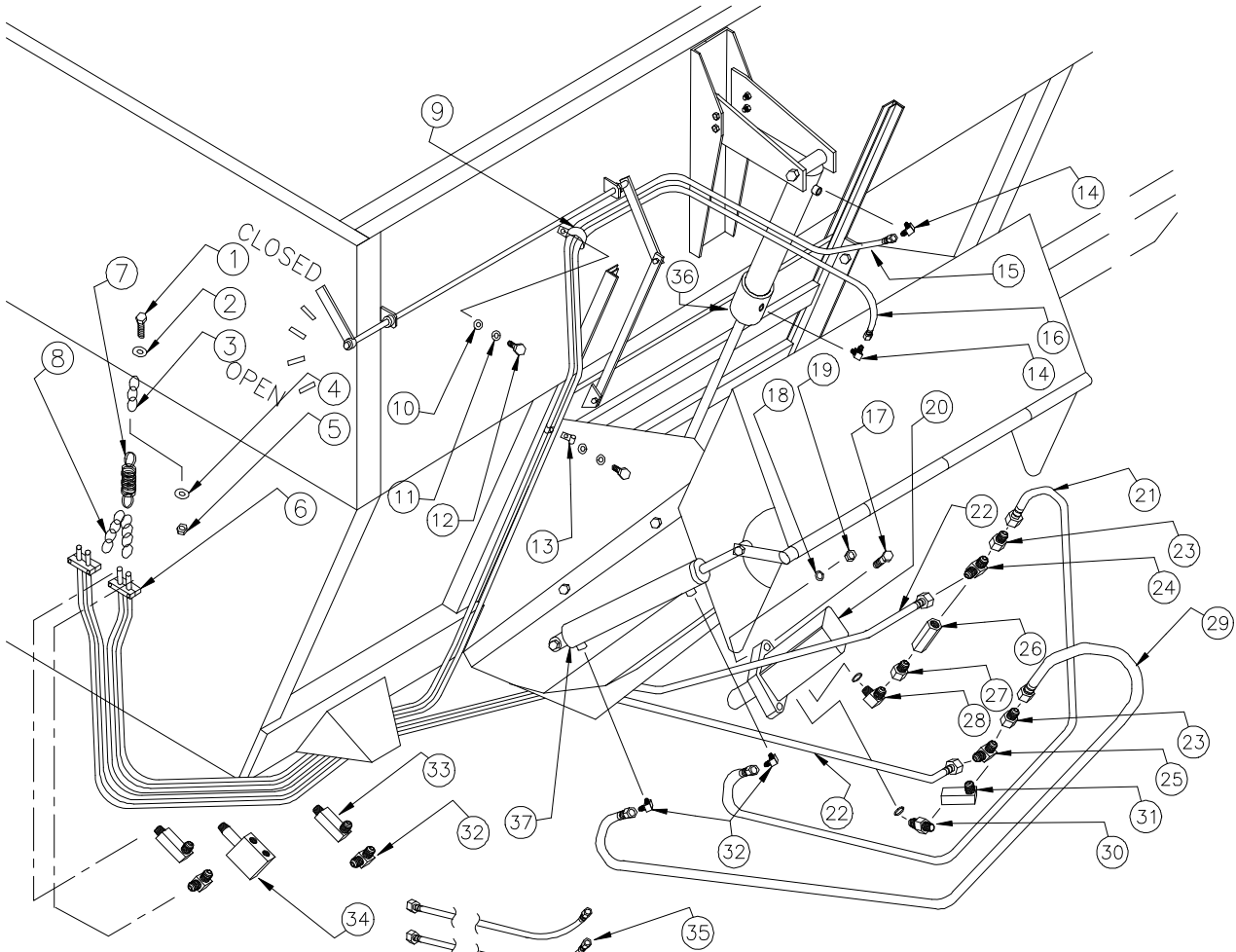
*13, *14, *15 TRIPLE AUGER DISCHARGE

WHEN ORDERING NEW DISCHARGE LINERS MEASURE DISCHARGE LENGTH. MEASUREMENTS ARE TAKEN FROM UNDER EITHER AUGER, FROM THE BACK PLATE TO THE END (WHERE DROP CHUTE BEGINS). PLEASE REFER TO PAGE 32 OR 36 FOR VISUAL REFERENCE.

AR - AS REQUIRED

NPN - NO PART NUMBER

TRAILER HYDRAULICS

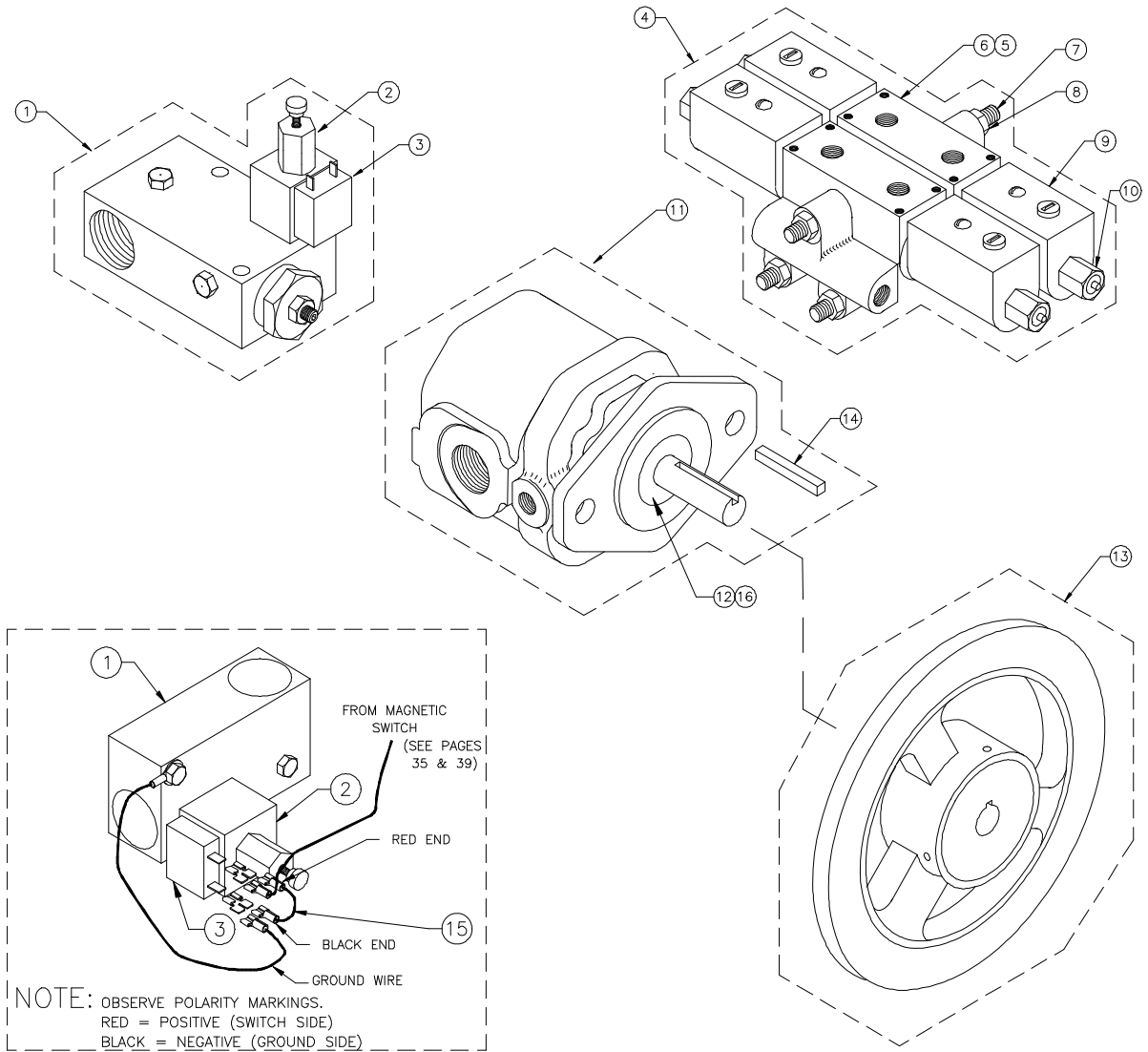


TRAILER HYDRAULICS

ITEM	PART #	QTY	DESCRIPTION	ITEM	PART #	QTY	DESCRIPTION
1	100323	1	SCREW	*20	102980	1	HYDRAULIC MOTOR
2	100443	1	FLAT WASHER	*21	102087	1	HOSE 1/4 x 18'
3	7070514	1	CHAIN 3 LINKS	*22	102168	2	HOSE 1/2 x 13'
4	100304	1	LOCK WASHER	23	102158	2	ADAPTER
5	100221	2	NUT	24	102405	1	TEE
6	102256	2	DOUBLE HOSE CLAMP	25	102141	1	TEE
7	100447	1	SPRING	26	102404	1	CHECK VALVE
8	7070514	1	CHAIN 7 LINKS	27	102162	1	ADAPTER
9	102498	4	HOSE CLAMP	28	102403	1	90° ELBOW
10	100443	5	FLAT WASHER	*29	102091	1	HOSE 1/4 x 13'
11	100304	5	LOCK WASHER	30	102161	1	ADAPTER
12	100323	5	SCREW	31	102402	1	90° ELBOW
13	100935	2	HOSE CLAMP	32	101642	2	90° ELBOW
14	102484	2	90° ELBOW	33	101241	2	90° ELBOW, LONG NECK
*15	102172	1	HOSE 1/2 x 20'	34	102952	1	RELIEF VALVE
*16	102173	1	HOSE 1/2 x 21.5'	*35	102169	2	HOSE 1/2 x 15'
17	100226	2	SCREW	36	17366	1	DISCHARGE DOOR CYLINDER
18	100272	2	LOCK WASHER	37	17370	1	DROP CHUTE CYLINDER
19	100250	2	NUT				

NOTE: *15, *16, *21, *22, *29, *35 MEASURE THE LENGTH OF EACH HOSE BEFORE ORDERING.
 *20 USE TRW ROSS HYDRAULIC MOTOR # 102980 AS PRIMARY MOTOR. CHAR-LYNN # 101705 MAY BE USED IF NECESSARY.

HYDRAULIC COMPONENTS



HYDRAULIC COMPONENTS

ITEM PART # QTY DESCRIPTION

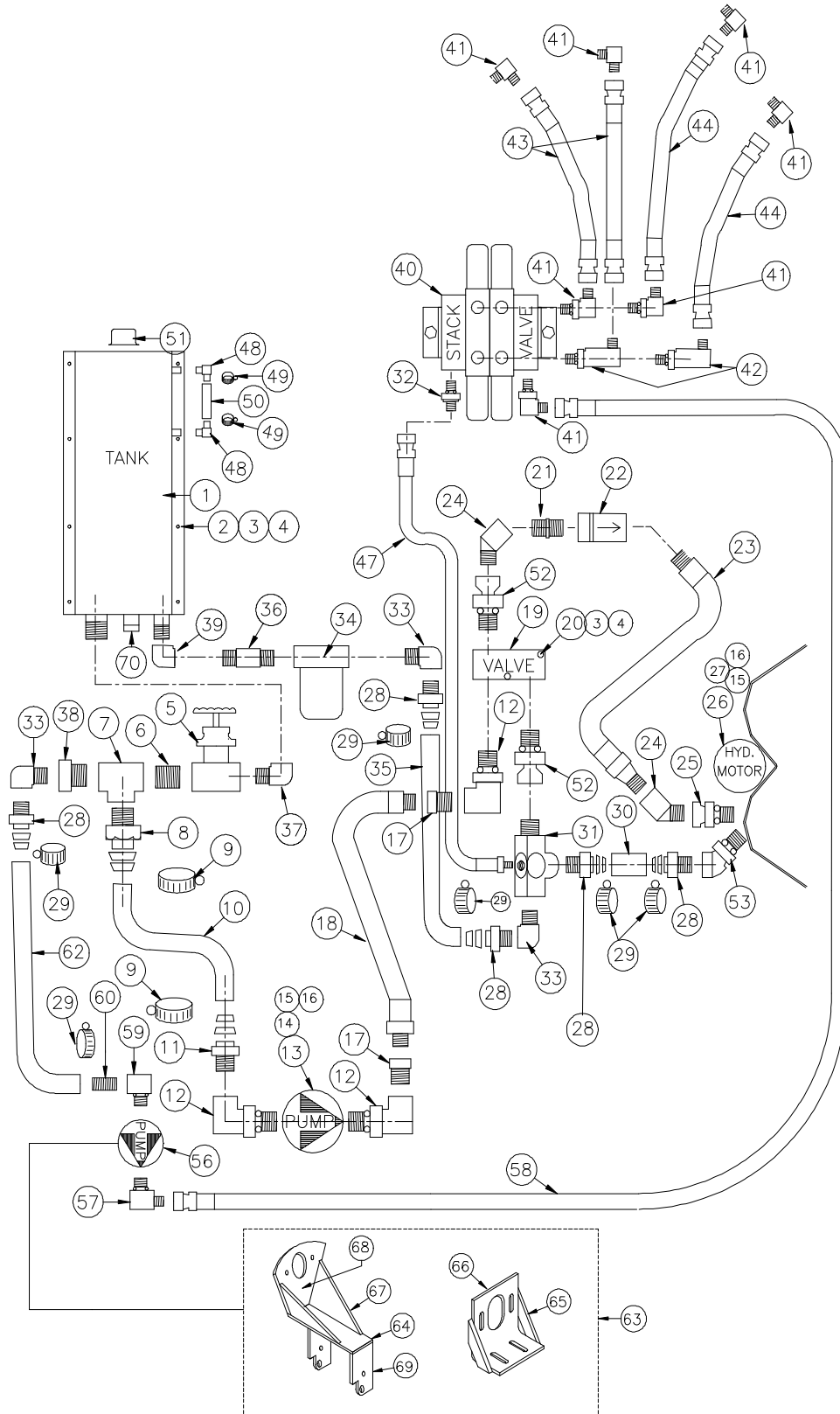
1	102368	1	VALVE (SAME AS 101779)
*2	4411	1	SOLENOID CARTRIDGE
3	4413	1	SOLENOID
4	101240	1	STACK VALVE, 2 SPOOL
4	102347	1	STACK VALVE, 3 SPOOL
5	4405	AR	VALVE BANK
6	4406	AR	SEAL KIT, SINGLE SECTION
7	4407	3	TIE ROD (2 BANKS)
7	4408	3	TIE ROD (3 BANKS)

ITEM PART # QTY DESCRIPTION

8	4409	6	NUT
9	4410	AR	COIL
10	4475	AR	NUT
11	100929	1	PUMP, AUXILIARY
12	4461	1	SEAL, SHAFT
13	100916	1	PULLEY, 6" DIA.
14	4484	1	KEY
15	A17538	1	DIODE ASSEMBLY
16	4486	1	BEARING

NOTE: *2 CARTRIDGE INCLUDES MANUAL OVERRIDE KIT (P/N 4516).
 AR - AS REQUIRED

TRUCK HYDRAULICS



TRUCK HYDRAULICS

ITEM	PART #	QTY	DESCRIPTION	ITEM	PART #	QTY	DESCRIPTION
1	A16970	1	VERTICAL TANK ASSEMBLY	36	102516	1	NIPPLE
2	100323	12	SCREW	37	100516	1	ELBOW
3	100304	12	WASHER	38	101862	1	BUSHING
4	100221	12	NUT	39	NPN	1	ELBOW
5	101852	1	GATE VALVE	40	101240	1	STACK VALVE
6	101851	1	NIPPLE	41	101642	7	ELBOW
7	101853	1	TEE	42	101241	2	ELBOW
8	100515	1	HOSE BARB	43	102087	2	HOSE ASS'Y (1/4 X 18" LG., #6 JIC [F])
9	100514	2	HOSE CLAMP	44	17422	2	HOSE ASS'Y (1/4 X 91" LG., #6 JIC [F])
*10	17421	1	SUCTION HOSE, 58"	47	A17373	1	HOSE ASSEMBLY
11	102240	1	HOSE BARB	48	102485	2	ELBOW
12	101856	3	ELBOW	49	102486	2	HOSE CLAMP
13	101848	1	PUMP	50	17060	1	SIGHT TUBE
14	101444	2	SCREW	51	100182	1	CAP BREATHER
15	300826C	4	NUT	52	102457	2	ADAPTER
16	100272	4	WASHER	53	102479	1	ELBOW
17	101770	2	BUSHING	*56	100929	1	AUX. PUMP, GEAR
*18	101857	1	HOSE ASSEMBLY, 50"	*56	103017	1	AUX. PUMP, ELEC.
19	102368	1	VALVE	57	101785	1	ELBOW
20	100689	2	SCREW	*58	101783	1	HOSE ASSEMBLY, 164"
21	101859	1	NIPPLE	59	101597	1	ELBOW
22	101860	1	VALVE, CHECK	60	100984	1	NIPPLE
23	102095	1	HOSE ASSEMBLY	*62	14881	1	SUCTION HOSE, 132"
24	102478	2	ELBOW	63	A9441	1	BRACKETS, AUXILLIARY PUMP
25	101780	1	ADAPTER	64	15854	1	PLATE
*26	102980	1	HYDRAULIC MOTOR	64	11821	1	PLATE
27	300889C	2	SCREW	65	15855	2	BAR, PUMP BRACE
28	100831	5	HOSE BARB	66	15853	1	PUMP MOUNT ANGLE
29	100761	6	HOSE CLAMP	67	12182	2	GUSSET
30	14877	1	HOSE, RETURN	68	11870	1	PUMP MOUNT PLATE
31	17008	1	TEE	69	11823	2	MOUNT PLATE
32	101644	1	ADAPTER, #6 SAE - #6 JIC	70	101674	1	PLUG, TANK
33	100941	2	ELBOW	71	A9558	1	SEAL KIT (FOR 101848)
34	101242	1	FILTER ASSEMBLY, INCLUDES HEAD	72	4310	1	REPLACEMENT FILTER, SPIN-ON
35	17378	1	HOSE, RETURN	73	4461	1	SEAL (FOR 100929)

NOTE: *10, *18, *58, *62 MEASURE THE LENGTH OF EACH HOSE BEFORE ORDERING.

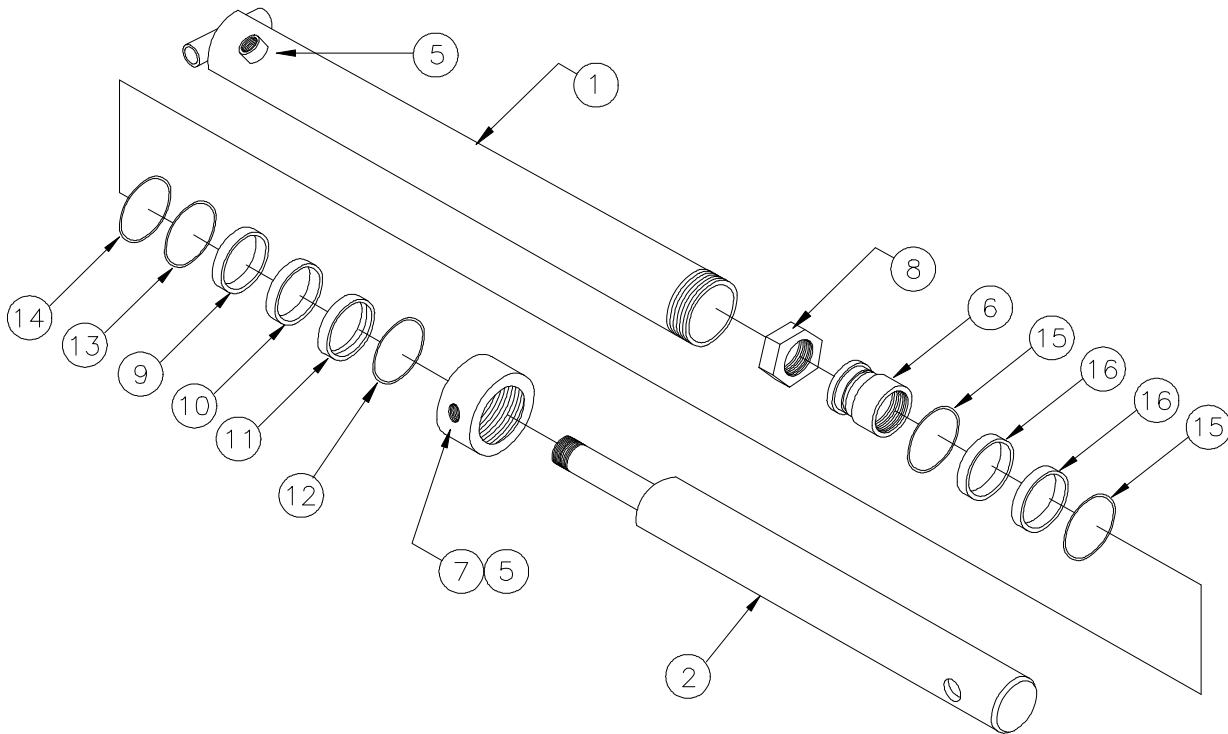
*26 USE TRW ROSS HYDRAULIC MOTOR # 102980 AS PRIMARY MOTOR. CHAR-LYNN # 101705 MAY BE USED IF NECESSARY.

*56 PLEASE SPECIFY TYPE OF PUMP, GEAR DRIVEN OR ELECTRIC.

NPN - NO PART NUMBER

71, 72, 73 - NOT SHOWN

DISCHARGE DOOR CYLINDER



DISCHARGE DOOR CYLINDER

ITEM	PART #	QTY	DESCRIPTION
	A17366	1	CYLINDER ASS'Y, DIS. DOOR
1	A17365	1	CYLINDER BODY ASS'Y
2	15116	1	CYLINDER SHAFT
*3	A9252	1	PISTON SEAL KIT
*4	A9409	1	GLAND NUT SEAL KIT
5	101669	2	PIPE PLUG #6 SAE
6	10092	1	PISTON, 2 1/2" DIA.
7	17364	1	GLAND NUT
8	100248	1	NUT, HEX

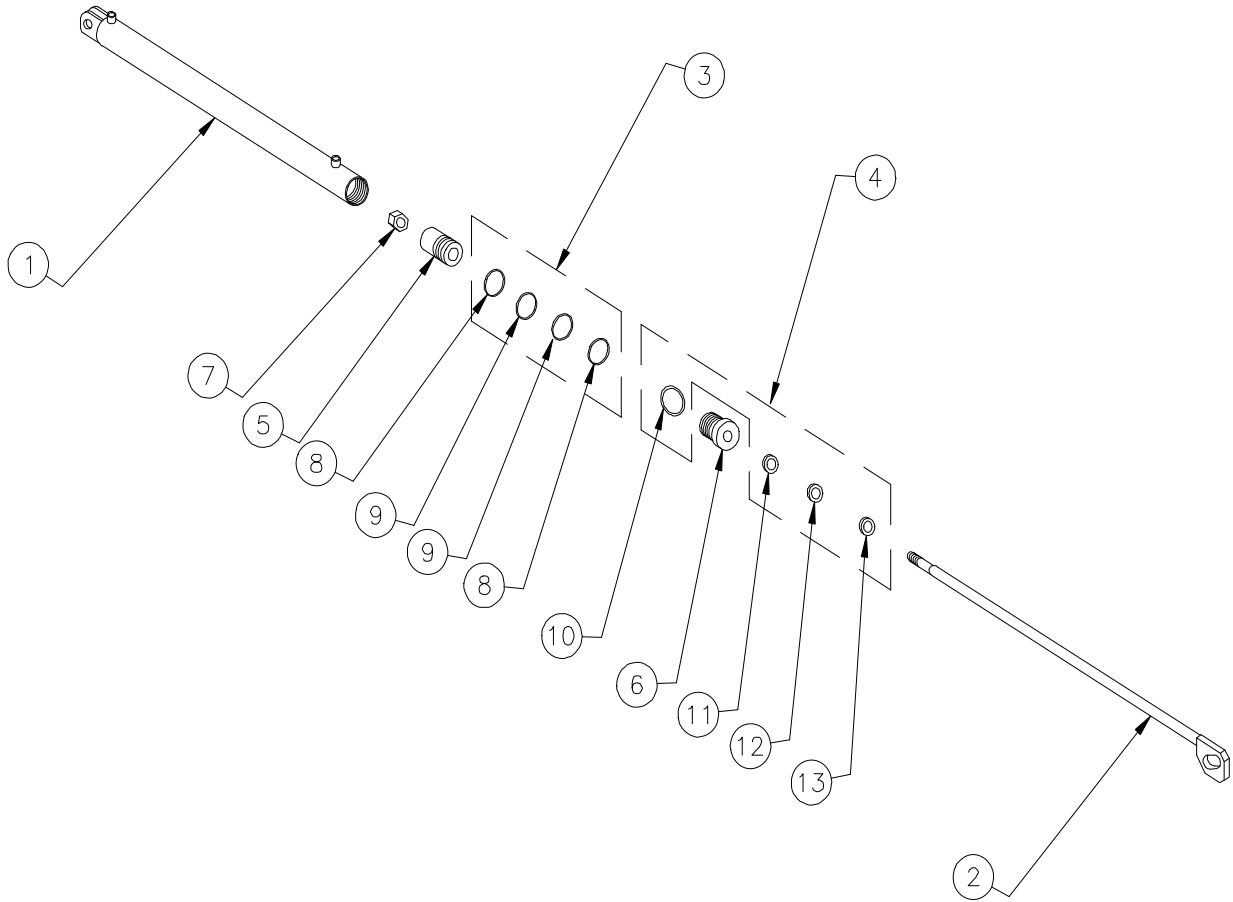
ITEM	PART #	QTY	DESCRIPTION
9	15605	NSS	1 BEARING BUSHING
10	101957	NSS	1 SEAL, POLY
11	15604	NSS	1 WIPER BUSHING
12	100133	NSS	1 WIPER RING
13	100143	NSS	1 RETAINING RING
14	100190	NSS	1 O-RING SEAL
15	100153	NSS	2 O-RING SEAL
16	100732	NSS	2 BACK UP RING

NOTE: *3 INCLUDES ITEMS 15, 16.

*4 INCLUDES ITEMS 9, 10, 11, 12, 13, & 14.

NSS - NOT SOLD SEPARATELY

DROP CHUTE CYLINDER

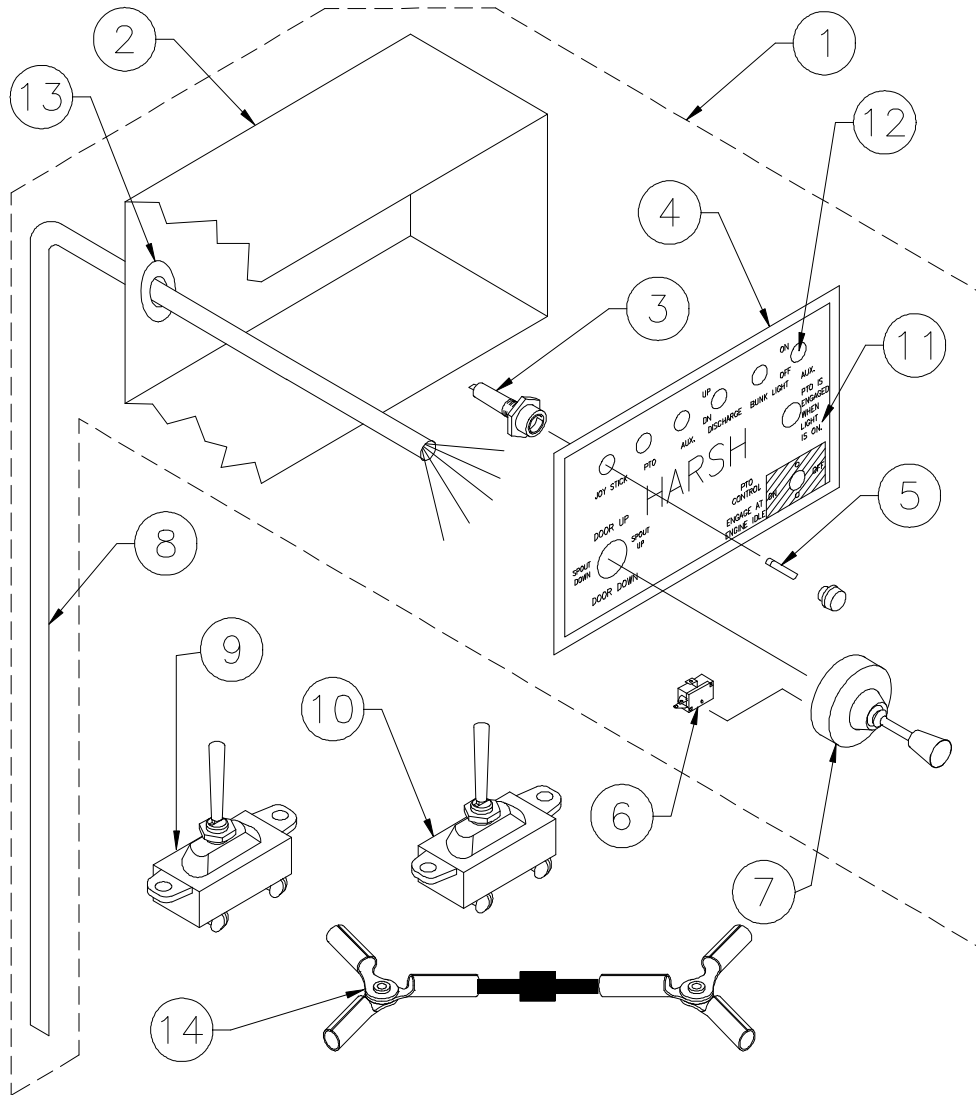


DROP CHUTE CYLINDER

ITEM	PART #	QTY	DESCRIPTION	ITEM	PART #	QTY	DESCRIPTION
	A17370	1	CHUTE CYLINDER ASSEMBLY	7	100248	1	NUT, HEX
1	A17369	1	CYLINDER BODY	8	100153 NSS	2	O-RING
2	A14507	1	CYLINDER SHAFT ASSEMBLY	9	100732 NSS	2	BACK-UP RING
*3	A9252	1	PISTON SEAL KIT	10	100901 NSS	1	O-RING
*4	A9400	1	GLAND NUT SEAL KIT	11	101699 NSS	1	O-RING
5	10092	1	PISTON	12	101698 NSS	1	BACK-UP RING
6	14503	1	GLAND NUT	13	100133 NSS	1	WIPER

NOTE: *3 INCLUDES ITEMS 8, 9.
 *4 INCLUDES ITEMS 10-13.
 NSS - NOT SOLD SEPARATELY

ELECTRIC SWITCHES



ELECTRIC SWITCHES

ITEM PART # QTY DESCRIPTION

*1	A7539	1	CONTROL BOX, JOYSTICK
1	A7456	1	CONTROL BOX, JOYSTICK
2	16781	1	CONTROL BOX, BOTTOM
3	490041	AR	FUSE HOLDER
4	16780	1	CONTROL BOX, LID
5	NPN	AR	FUSE, AGC 10 AMP
6	4404	AR	JOY STICK SWITCH
*7	A17469	1	JOY STICK CONTROL (8 SWITCH)
7	102079	1	JOY STICK CONTROL (4 SWITCH)
8	16399	1	CABLE, 4 CONDUCTOR
*8	17468	1	CABLE, 8 CONDUCTOR

ITEM PART # QTY DESCRIPTION

9	490197	1	PTO SWITCH
10	101324	2	TOGGLE SWITCH
11	102422	1	DECAL, JOY STICK CONTROL BOX
12	102295	AR	PLUG
13	102294	1	GROMMET, CABLE
14	A17539	1	DIODE ASSEMBLY
15	A16110	1	INDICATOR PEDESTAL
16	102328	1	DIGITAL LCD REVOLUTION COUNTER
17	490392	1	REVOLUTION COUNTER MAGNET - top
18	490343	1	REVOLUTION COUNTER MAGNET - bottom

NOTE: AR - AS REQUIRED

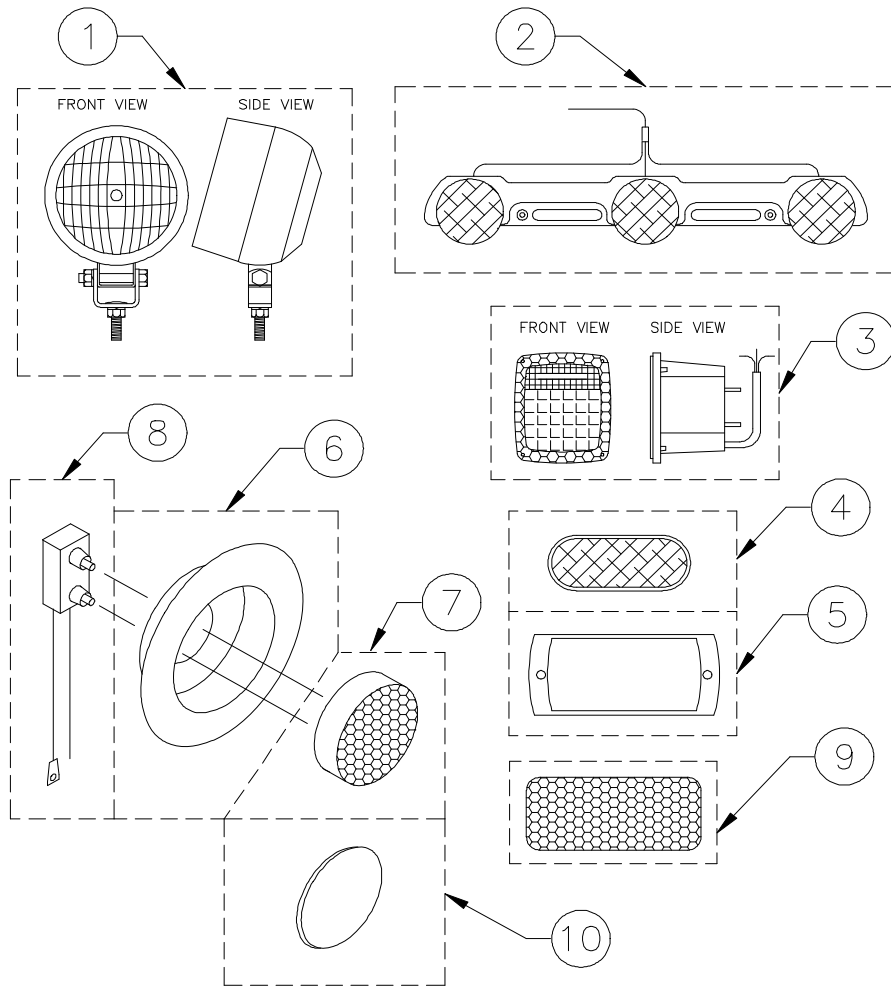
NPN - NO PART NUMBER

*1, *7, & *8 FOR MONARCH PUMP MODEL #628 ONLY.

*7 & 7 JOY STICK CONTROL INCLUDES PART #4404 (JOY STICK SWITCH).

15, 16, 17, 18 - NOT SHOWN

LIGHTS



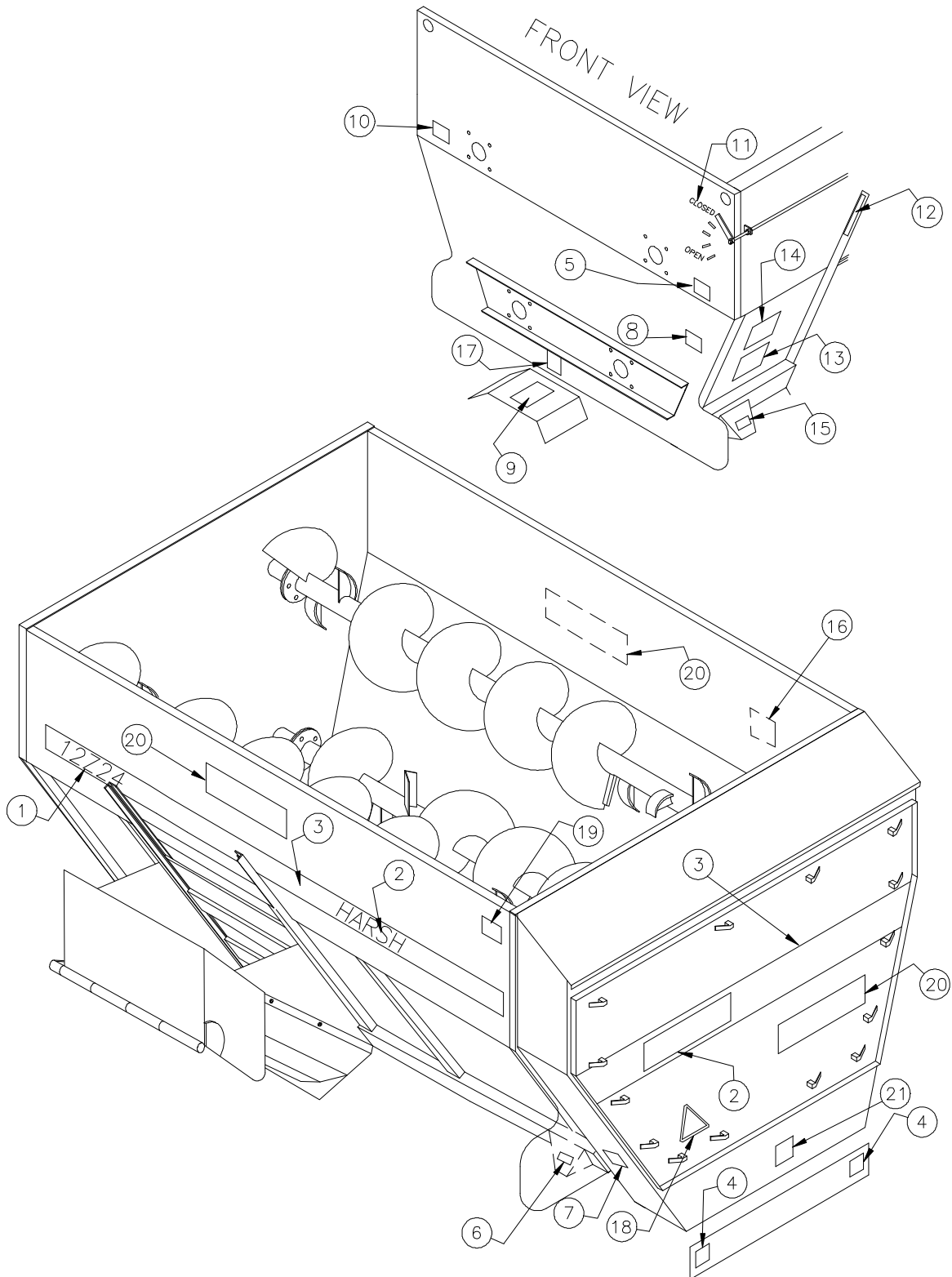
LIGHTS

ITEM	PART #	QTY	DESCRIPTION
1	102439	AR	BUNK LIGHT
2	100335	AR	TRIPLE IDENTIFICATION LIGHT
3	102244	AR	TAIL LIGHT, LEFT
3	102257	AR	TAIL LIGHT, RIGHT
4	102241	AR	CLEARANCE LIGHT, RED
4	102242	AR	CLEARANCE LIGHT, AMBER
5	102243	AR	CHROME GUARD, CLEARANCE LIGHT
6	102490	AR	GROMMET, CLEARANCE LIGHT (FOR 3" HOLE)
7	102493	AR	CLEARANCE LIGHT, RED (FOR GROMMET)
7	102492	AR	CLEARANCE LIGHT, AMBER (FOR GROMMET)
8	102491	AR	PLUG, CLEARANCE LIGHT (FOR GROMMET)
9	102361	AR	REFLECTOR, RED
9	102360	AR	REFLECTOR, YELLOW
10	17479	AR	STEEL PLUG (FOR GROMMET - W/O CLEARANCE LIGHT)

NOTE: AR - AS REQUIRED

MIXER DECALS

12Z24 - 14Z24 - 16Z24



MIXER DECALS

ITEM	PART #	QTY	DESCRIPTION	ITEM	PART #	QTY	DESCRIPTION
1	102856	2	12Z24 DECAL	12	101181	1	DOOR MARKER, TRUCK
1	102857	2	14Z24 DECAL	13	102069	1	MAINTENANCE
1	102858	2	16Z24 DECAL	14	102109	1	CAUTION, BEFORE WELDING
2	102549	3	HARSH, SIDE & REAR DOOR DECAL	15	102360	2	ORANGE REFLECTOR
3	102546	35'	RED STRIPE, SIDE 12Z24	*16	102071	1	DANGER DO NOT ENTER
3	102546	39'	RED STRIPE, SIDE 14Z24	17	102370	1	DO NOT OPERATE W/O SHIELD
3	102546	43'	RED STRIPE, SIDE 16Z24	18	102556	1	SLOW MOVING VEHICLE
4	102097	2	NO LIFT DECAL	*19	102777	1	TUB GUARD DECAL
5	102339	1	DANGER, ROTATING AUGER	20	102859	2	DECAL, HAYSIZOR
6	102361	2	RED REFLECTOR	21	102776	1	GEARBOX SPROCKET ROTATION
7	102070	1	OIL BATH MAINTENANCE	**	A9723	1	12Z24 DECAL KIT (TRUCK)
8	102874	1	DECAL, OFF-ROAD USE	**	A9721	1	12Z24 DECAL KIT (TRAILER & STATIONARY)
9	102358	1	DANGER, DRIVE LINE	**	A9727	1	14Z24 DECAL KIT (TRUCK)
10	102107	1	DANGER, DRIVE LINE 540 RPM - 6 SPLINE	**	A9725	1	14Z24 DECAL KIT (TRAILER & STATIONARY)
10	102108	1	DANGER, D/L 1000 RPM - 21 SPLINE	**	A9731	1	16Z24 DECAL KIT (TRUCK)
10	102579	1	DANGER, D/L 1000 RPM - 20 SPLINE	**	A9729	1	16Z24 DECAL KIT (TRAILER & STATIONARY)
11	101992	1	DOOR MARKER, TRAILER	**	A9595	1	SAFETY DECAL KIT

NOTE: *16 INSTALL NEXT TO LADDER.

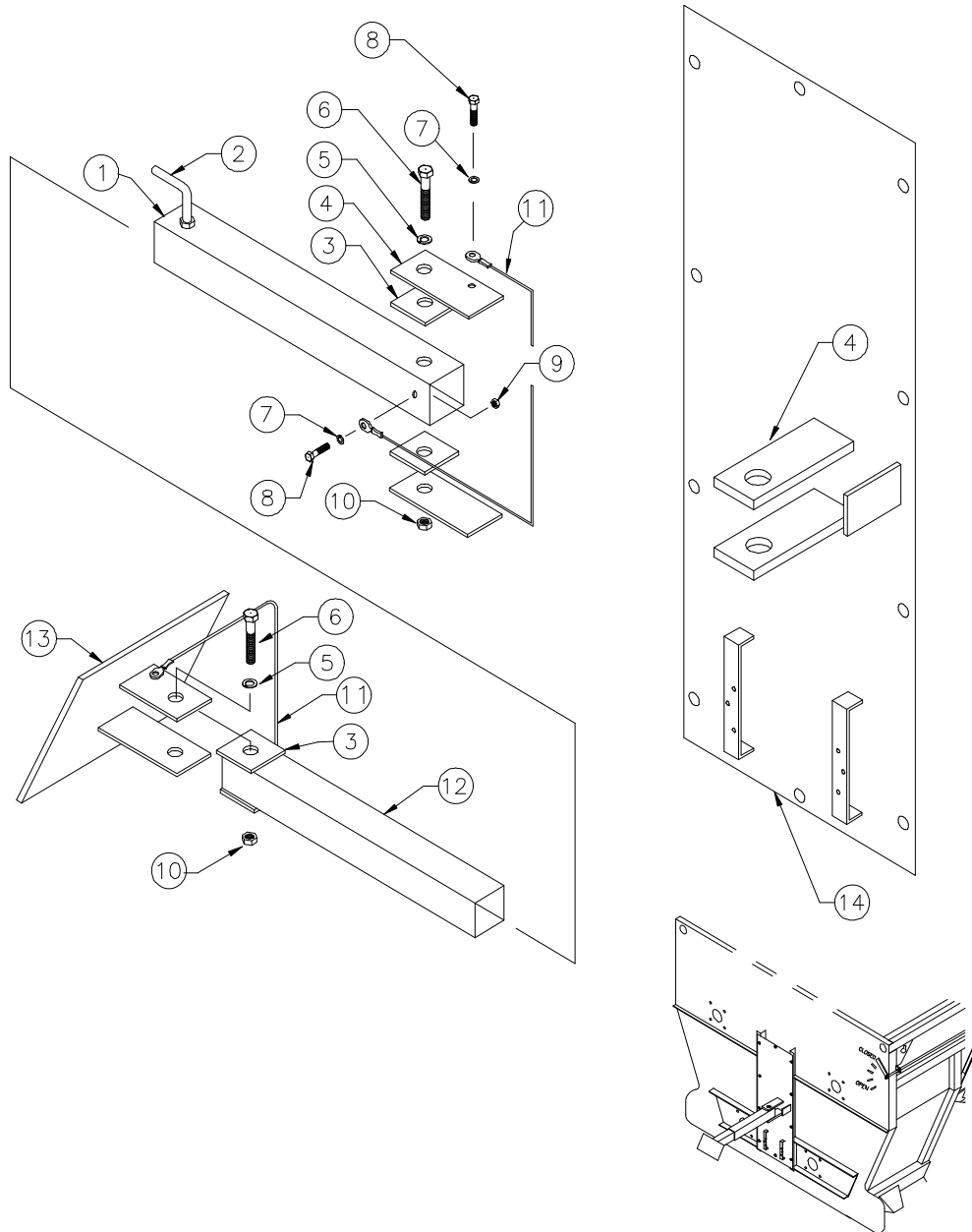
*19 INSTALL NEXT TO LADDER.

**DECALS INCLUDED IN DECAL KITS ARE EQUAL TO DECALS ATTACHED TO MIXER AT THE TIME OF SHIPMENT.

DECALS NOT AVAILABLE SEPERATELY...PURCHASE BY KIT ONLY

HARSH ENCOURAGES THE REPLACEMENT OF ALL SAFETY DECALS WHEN THEY BECOME UNREADABLE, DAMAGED, OR IF THE UNIT IS REPAINTED. IN ORDER TO ASSURE MIXERS ARE COMPLETELY REDECALED WITH ALL THE NECESSARY SAFETY DECALS, THEY ARE INCLUDED IN THE TRUCK AND TRAILER DECAL KITS. IF YOU DO NOT DESIRE TO PURCHASE THE COMPLETE MIXER DECAL KIT, YOU CAN PURCHASE ONLY THE SAFETY DECAL KIT WHICH WILL PROVIDE YOU WITH THE SAFETY AND OPERATION DECALS ONLY.

SWING ARM

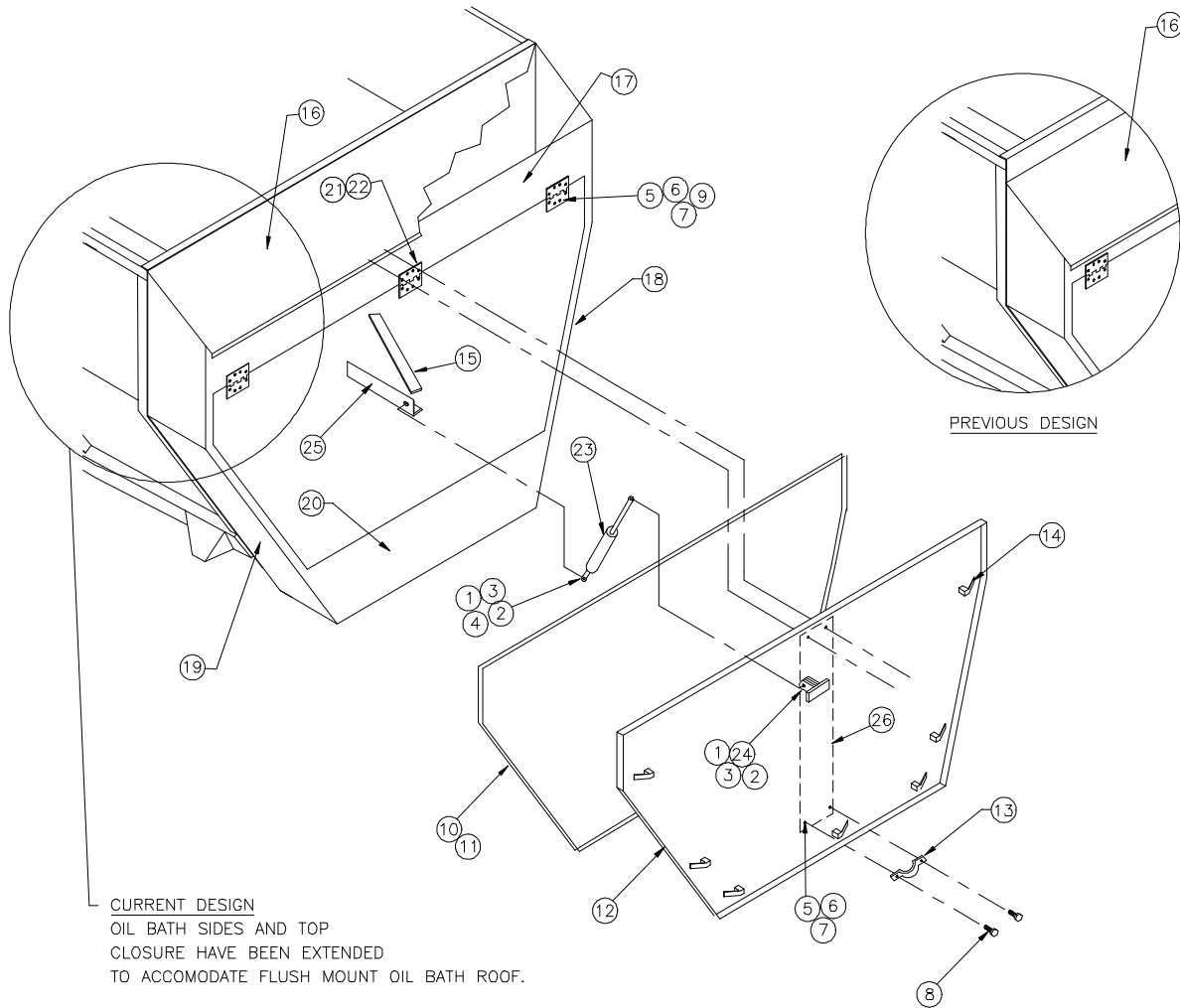


SWING ARM

ITEM	PART #	QTY	DESCRIPTION
1	A15320	1	INDICATOR MNT TUBE ASSEMBLY
2	101902	1	HANDLE, SET SCREW
3	15318	4	FRICTION PAD
4	15319	2	CLEVIS, WELD ON
5	100272	2	LOCK WASHER
6	101811	2	SCREW
7	100304	4	LOCK WASHER
8	101819	4	SCREW

ITEM	PART #	QTY	DESCRIPTION
9	100221	4	NUT
10	300826	2	NUT
11	A16362	2	GROUNDING STRAP
12	15316	1	EXTENSION TUBE
13	A15315	1	INDICATOR EXTENSION ASSEMBLY
13	A16059	1	EXTENSION ASSEMBLY J-STAR
14	A17067	1	INDICATOR MNT PLATE ASSEMBLY

REAR OIL BATH & DOORS



REAR OIL BATH & DOORS

ITEM	PART #	QTY	DESCRIPTION	ITEM	PART #	QTY	DESCRIPTION
1	100240	2	SCREW, HEX HD CAP	16	18961	1	OIL BATH ROOF
2	101985	2	NUT, LOCK	*16	15992	1	OIL BATH ROOF
3	100300	6	WASHER, FLAT	17	18960	1	OIL BATH TOP CLOSURE
4	100254	1	NUT, HEX	*17	18460	1	OIL BATH TOP CLOSURE
5	100221	26	NUT	18	18958	1	OIL BATH SIDE, RIGHT
6	100304	26	LOCK WASHER	*18	18462	1	OIL BATH SIDE, RIGHT
7	100443	26	WASHER, FLAT	19	18959	1	OIL BATH SIDE, LEFT
8	100323	2	SCREW	*19	18463	1	OIL BATH SIDE, LEFT
9	101248	24	SCREW	20	18461	1	OIL BATH BOTTOM CLOSURE
*10	102481	6.5'	SEAL, FLEXIBLE DOOR 1/4	21	102446	3	HINGE
*11	102477	13'	SEAL, FLEXIBLE DOOR 1/8	22	17026	3	HINGE BACK PLATE
*12	18464	1	OIL BATH DOOR	23	102451	1	STRUT, GAS CHARGED SUPPORT
13	102779	1	HANDLE, OIL BATH DOOR	24	A17927	1	STRUT MOUNT ASS'Y
14	101305	7	LATCH	25	18262	1	ANGLE, STRUT MOUNT
15	18261	1	BAR, STRUT MOUNT BRACE	26	18473	1	CHANNEL, FORMED DOOR BRACE

NOTE: *10 - TO BE USED ON TOP OF DOOR OPENING.

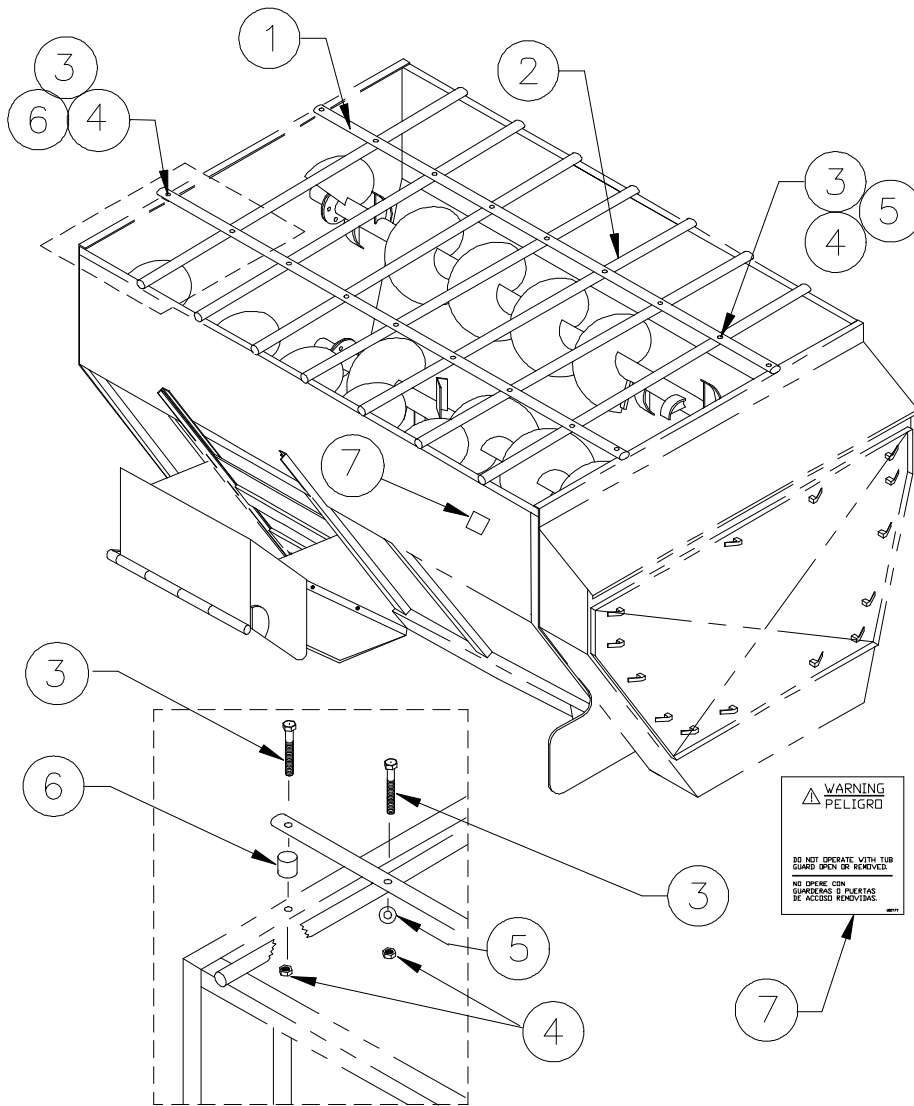
*11 - TO BE USED ON SIDES AND BOTTOM OF DOOR OPENING.

*12 - MEASURE EXISTING DOOR BEFORE ORDERING REPLACEMENT.

16, 17, 18, 19 - USED ON ALL UNITS S/N (12Z24HB9000, 14Z24HB9000, 16Z24HB9000) AND ABOVE.

*16, *17, *18, *19 - PREVIOUS DESIGN, USED ON UNITS UP TO S/N (12Z24HB8000, 14Z24HB8000, 16Z24HB8000). CHECK MIXER IF S/N IS BETWEEN (12Z24HB8000, 14Z24HB8000, 16Z24HB8000) AND (12Z24HB9000, 14Z24HB9000, 16Z24HB9000).

TUB GUARD



TUB GUARD

ITEM PART # QTY DESCRIPTION

*	A18273	1	TUB GUARD ASSEMBLY (12Z24)
*	A18274	1	TUB GUARD ASSEMBLY (14Z24)
*	A17462	1	TUB GUARD ASSEMBLY (16Z24)
1	17253	2	PIPE, TUB GUARD 144" LG. (12Z24)
1	17254	2	PIPE, TUB GUARD 168" LG. (14Z24)
1	17255	2	PIPE, TUB GUARD 192" LG. (16Z24)
2	17249	7	PIPE, TUB GUARD 83 3/4" LG. (12Z24)
2	17249	9	PIPE, TUB GUARD 83 3/4" LG. (14Z24)
2	17249	11	PIPE, TUB GUARD 83 3/4" LG. (16Z24)
3	102127	18	SCREW, HEX HEAD CAP (12Z24)

ITEM PART # QTY DESCRIPTION

3	102127	22	SCREW, HEX HD CAP (14Z24)
3	102127	26	SCREW, HEX HD CAP (16Z24)
4	102574	18	NUT, HEX NY-LOCK (12Z24)
4	102574	22	NUT, HEX NY-LOCK (14Z24)
4	102574	26	NUT, HEX NY-LOCK (16Z24)
5	100713	18	WASHER, FLAT (12Z24)
5	100713	22	WASHER, FLAT (14Z24)
5	100713	26	WASHER, FLAT (16Z24)
6	17256	4	PIPE, GUARD SPACER 3/4 LG.
*7	102777	4	DECAL, TUB GUARD

NOTE: *TUB GUARD ASSEMBLIES INCLUDE ALL PARTS SHOWN.
*7 INSTALL NEXT TO LADDER.