

HARSH
MOBILE MIXERS

PARTS MANUAL

SERIAL NUMBER 19B0436 AND ABOVE
24B0436 AND ABOVE
29B0436 AND ABOVE

190-240-290

TRAILER
&
STATIONARY MODELS

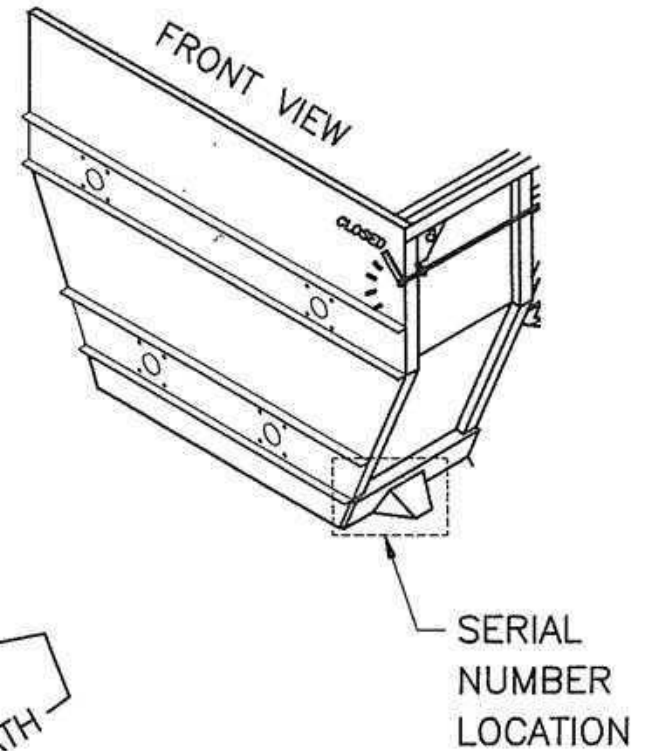
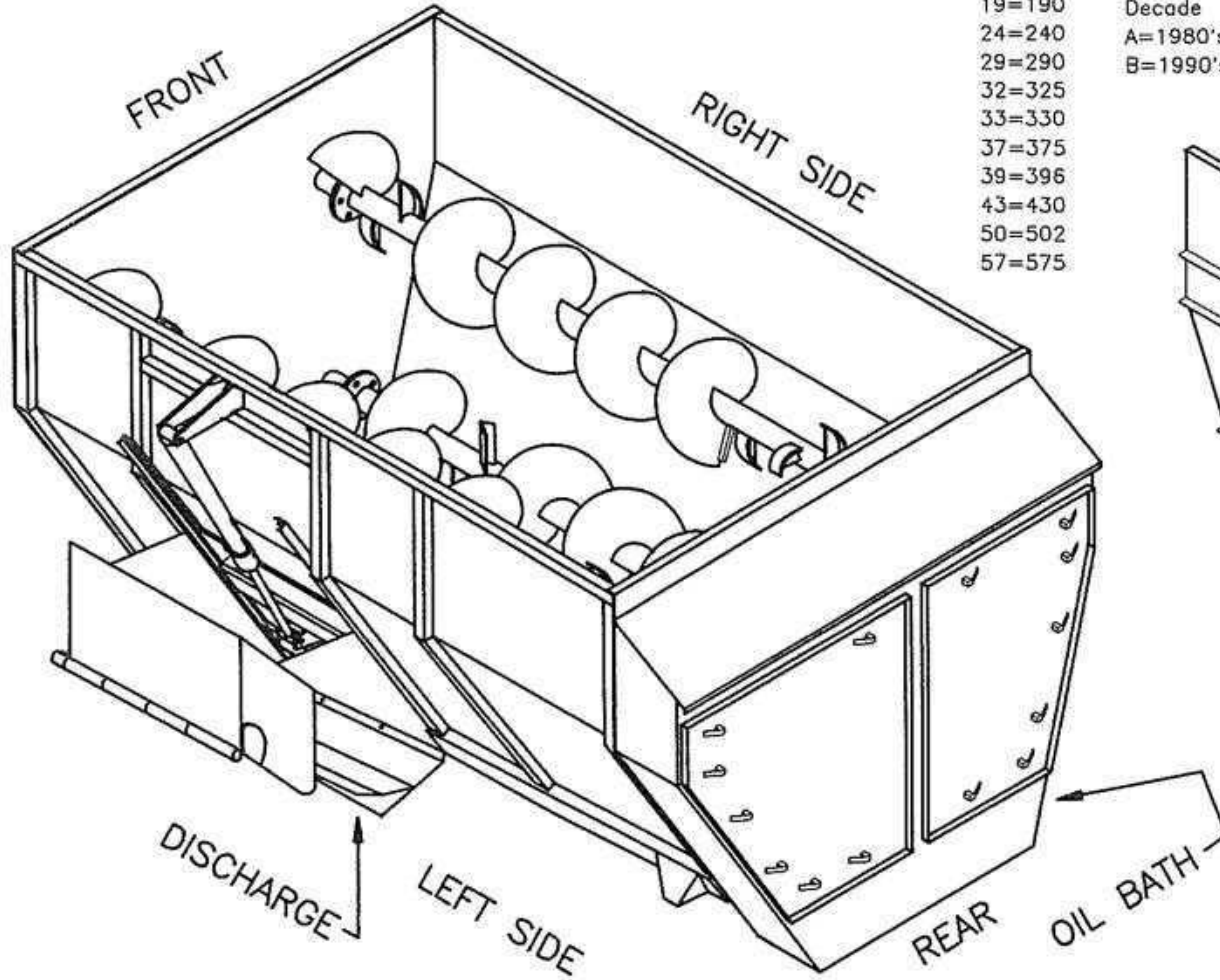
PRICE \$5.00
October 31, 1990

Mixer Orientation.

Serial Number Code

Model	XX	X	X	XXX	Mixer Number
19=190					
24=240					
29=290					
32=325					
33=330					
37=375					
39=396					
43=430					
50=502					
57=575					

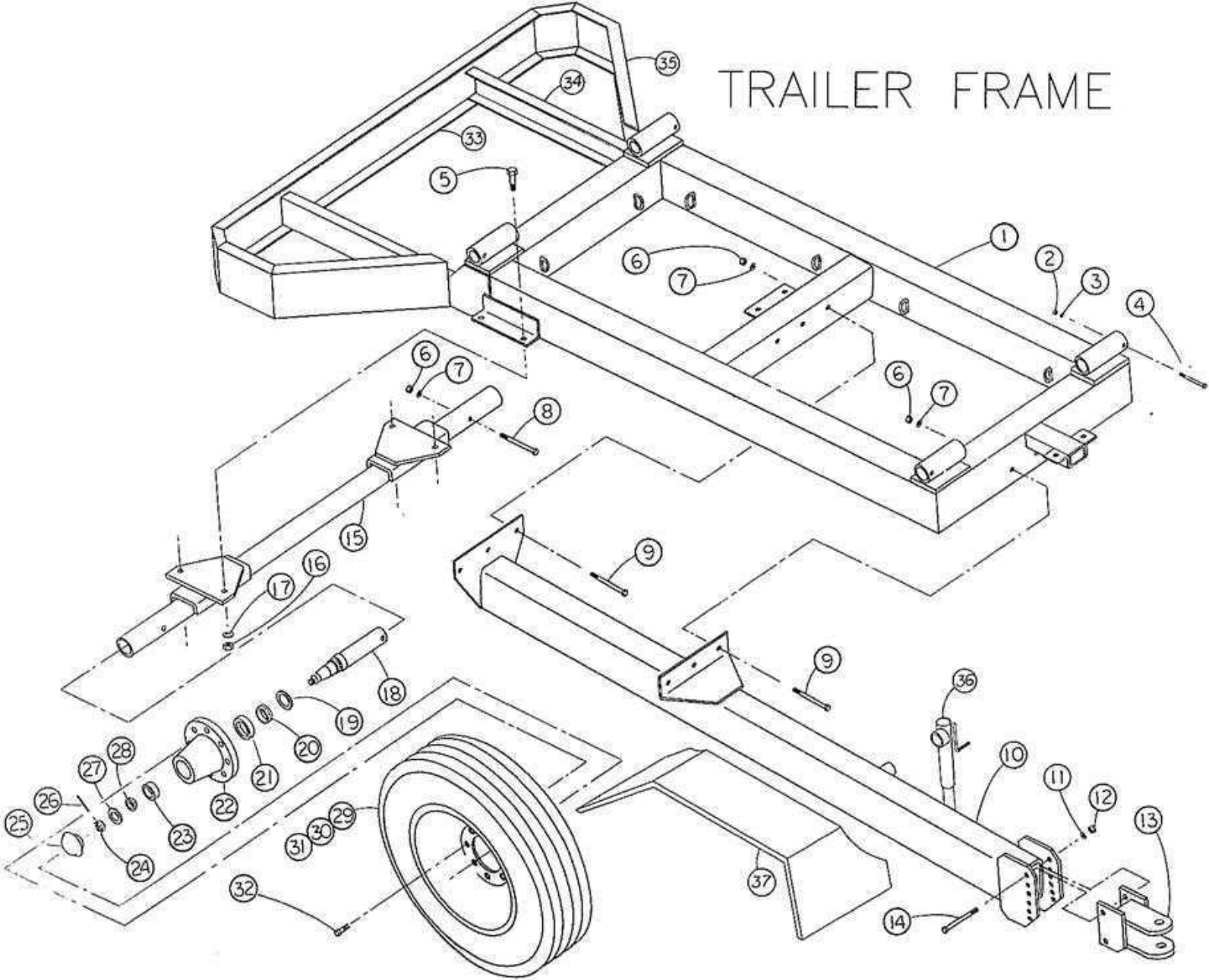
Decade
A=1980's
B=1990's



INDEX

Groups	Part No.	Groups	Page No.
Auger Assembly	10	Fender, Trailer	4
Auger, Discharge	24	Flighting, Auger	10
Auger Ordering Information	12	Flighting, Discharge Auger	24
Axle, Trailer	4	Frame Assembly, Trailer	4
Bumper	4	Hitch, Trailer	4
Bearings, Auger (Front & Rear)	14, 18	Hydraulic Motor, Discharge	24, 26
Bearings, Discharge	24	Hydraulics, Trailer	26
Chain, Discharge	24	Hydraulics, Electric Control	28
Chain, Rear Drive	16, 20	Hydraulics, Integral	30
Cylinder, Discharge Chute	34	Jack, Trailer	4
Cylinder, Discharge Door	32	Liners	42
Decals	40	PTO Drive Shaft	8
Discharge Assembly	22, 24	Rim, Trailer	4
Door, Discharge	22	Stationary Parts	44
Door Marker, Trailer	36	Stub Shafts, Auger	10
Door, Rear Oil Bath	38	Tire, Trailer	4
Drive Assembly, Rear	14-20	Tube, Trailer	4
Drive Line, Trailer	6	Tongue, Trailer	4
Drop Chute	22		

TRAILER FRAME

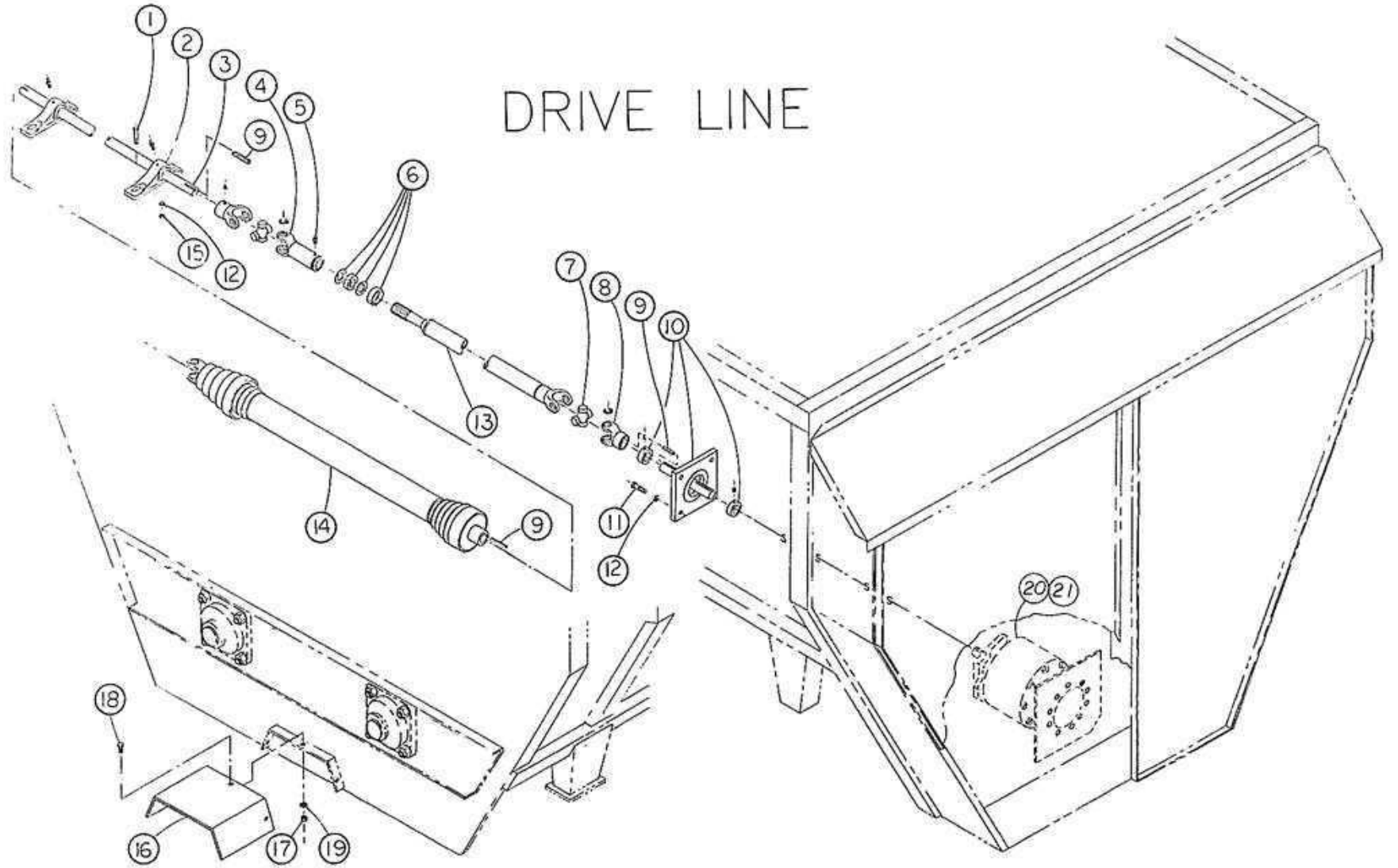


PARTS LIST TRAILER FRAME

ITEM	PART #	QTY	DESCRIPTION	ITEM	PART #	QTY	DESCRIPTION
1	A15249	AR	FRAME 190	19	101928	2	SEAL
1	A15250	AR	FRAME 240	20	101920	2	BEARING CONE
1	A15251	AR	FRAME 290	21	101922	2	BEARING CUP
2	100254	4	NUT	22	101924	2	HUB
3	100271	4	WASHER, LOCK	23	101923	2	BEARING CUP
4	100545	4	SCREW, HEX HD CAP	24	101926	2	NUT
5	101891	4	SCREW, HEX HD CAP	25	101927	2	HUB CAP
6	300826C	10	NUT	26	101929	2	COTTER PIN
7	100272	10	WASHER, LOCK	27	100173	2	WASHER
8	101811	2	SCREW, HEX HD CAP	28	101921	2	BEARING CONE
9	101893	4	SCREW, HEX HD CAP	29	101302	2	TIRE
10	A15253	1	TONGUE	30	101303	2	TUBE
11	100273	2	WASHER, LOCK	31	101301	2	RIM
12	100378	2	NUT	32	101925	16	BOLT, LUG
13	A15248	1	HITCH	33	15429	1	BUMPER, REAR
14	101394	2	SCREW, HEX HD CAP	34	15434	2	BUMPER, EXTENSION
15	A15252	1	AXLE	35	15428	2	BUMPER, SIDE
16	101446	4	NUT	36	101944	1	JACK
17	100554	4	WASHER, LOCK	37	16740	2	FENDER, TUB MOUNT 190, 290
18	15373	2	SPINDLE	37	16878	2	FENDER, TUB MOUNT 240

Note: AR - As Required

DRIVE LINE



PARTS LIST DRIVE LINE

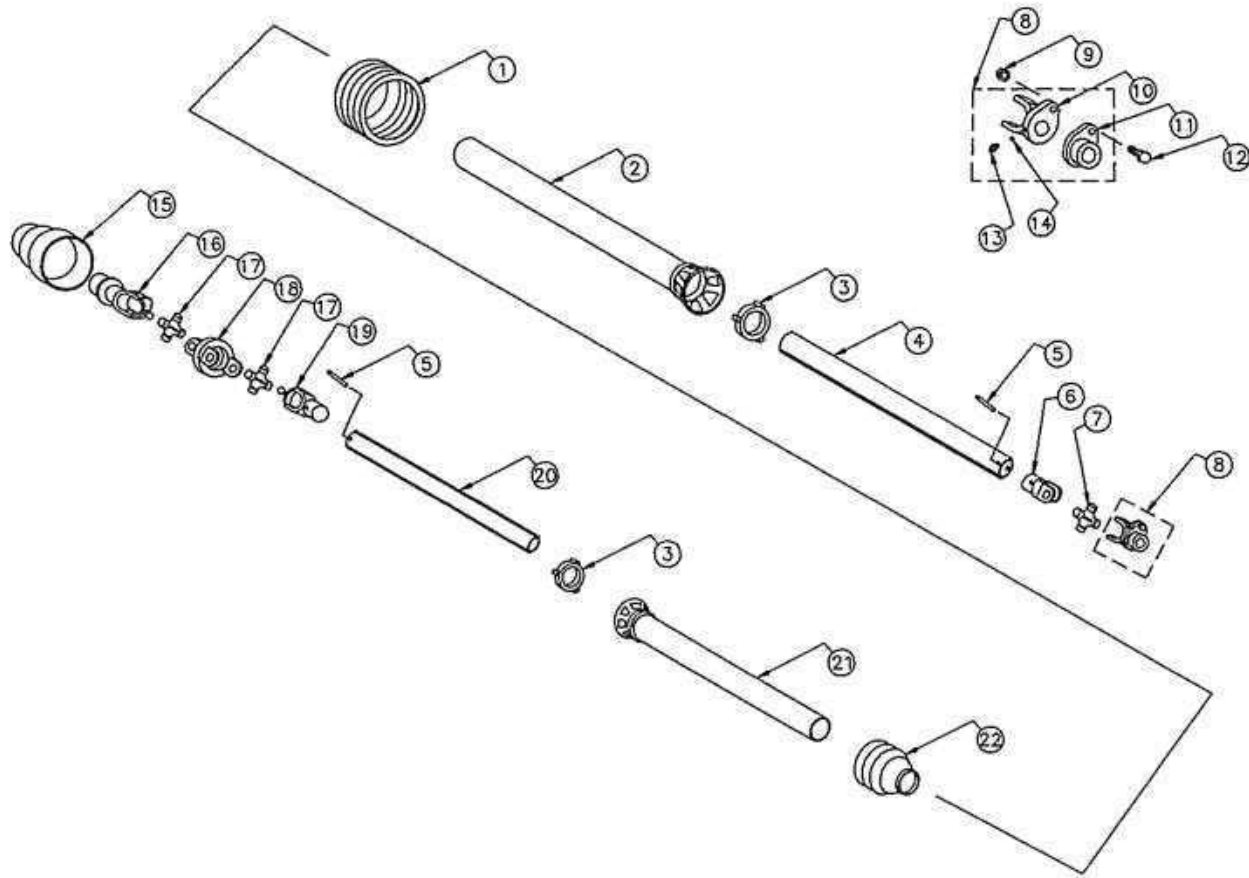
ITEM	PART #	QTY	DESCRIPTION
1	300904C	4	SCREW, HEX HD CAP
2	100055	2	BEARING
3	15346	1	SHAFT 190, 240
3	15347	1	SHAFT 290
4	100881	1	SLIP YOKE
5	100218	1	GREASE FITTING
6	NSS	1	NUT
7	100785	2	CROSS
8	100598	2	YOKE
9	10983	3	KEY
10	A15707	1	INPUT ADAPTER

ITEM	PART #	QTY	DESCRIPTION
11	101444	8	SCREW, HEX HD CAP
12	100272	8	WASHER, LOCK
*13	100884	1	DRIVE SHAFT
14	102330	1	PTO W/SHEAR 540RPM
15	300826C	4	NUT
16	15399	1	SHIELD
17	100221	3	NUT
18	101819	3	SCREW
19	100304	3	WASHER, LOCK
20	101913	AR	PLANETARY, 10.8:1 (540 RPM)
21	102105	AR	PLANETARY, 21:1 (1000 RPM)

Note: AR - As Required

* - Shorten drive line for the Model 190 only.

POWER TAKE OFF

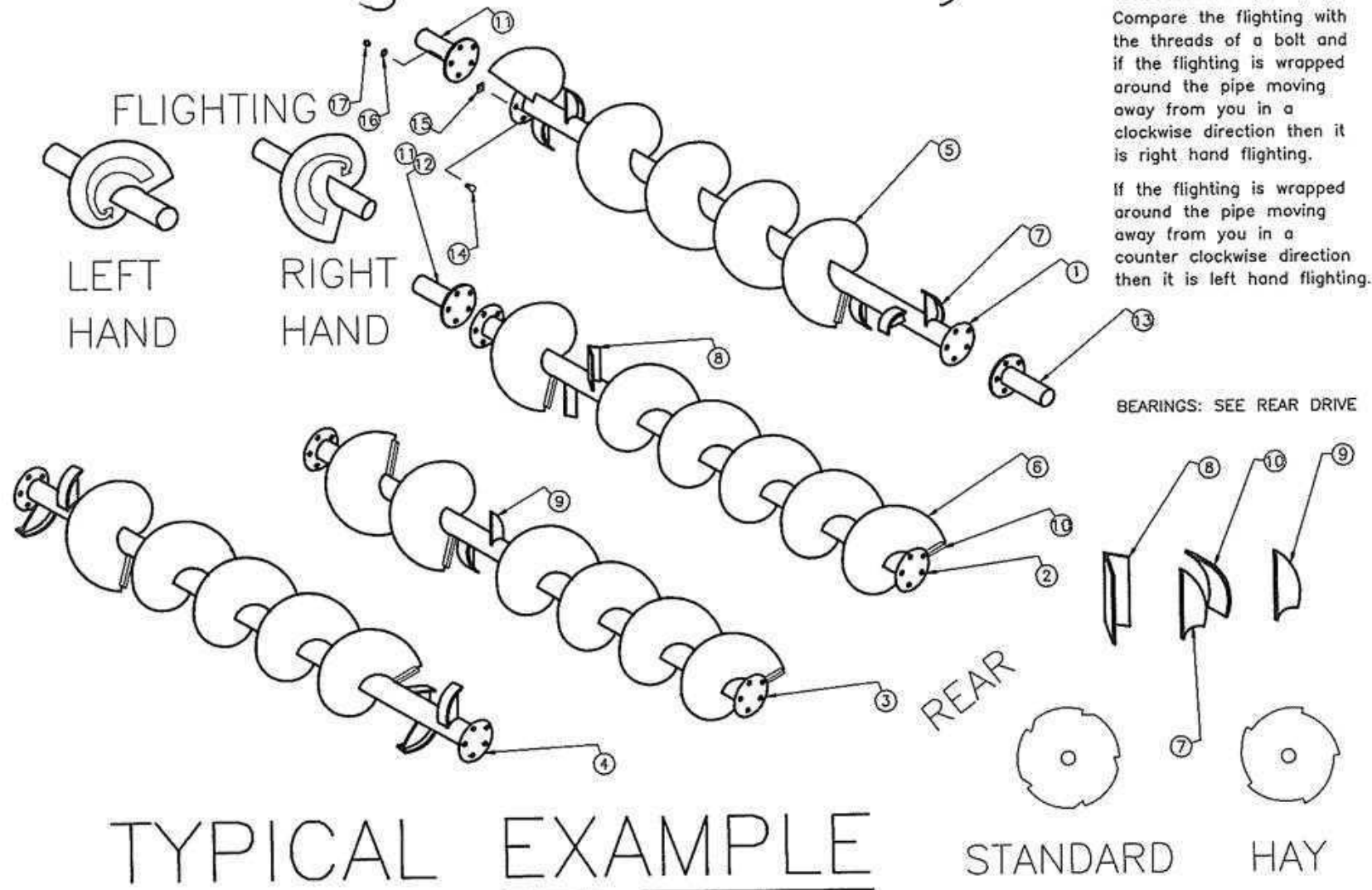


PARTS LIST POWER TAKE OFF

ITEM	PART #	QTY	DESCRIPTION	ITEM	PART #	QTY	DESCRIPTION
1	102063	1	5 RIB CONE	12	102288	1	SHEAR BOLT 650 NM
2	102060	1	SHIELD TUBE	13	4390	1	ZERK, GREASE
3	1020583	2	BEARING PLATE	14	4391	24	BALL
4	102055	1	OUTER PROFILE	15	102061	1	CV CONE
5	102053	2	ROLL PIN	16	102047	1	YOKE, 540 RPM
6	102056	1	YOKE	17	102052	2	CROSS
7	102057	1	CROSS	18	102049	1	DOUBLE YOKE
8	102331	1	SHEAR BOLT ASS'Y	19	102051	1	INNER YOKE
9	100297	1	NUT	20	102054	1	INNER PROFILE
10	4389	1	SHEAR YOKE	21	102059	1	SHIELD TUBE
11	102424	1	HUB, 1 1/4 dia	22	102062	1	3 RIB CONE

Note: AR - As Required

Auger Assembly



To Determine Flighting Type:
 Compare the flighting with the threads of a bolt and if the flighting is wrapped around the pipe moving away from you in a clockwise direction then it is right hand flighting.
 If the flighting is wrapped around the pipe moving away from you in a counter clockwise direction then it is left hand flighting.

TYPICAL EXAMPLE

STANDARD HAY

PARTS LIST AUGER ASSEMBLY

ITEM	PART #	QTY	DESCRIPTION
1		1	AUGER, UPPER RIGHT
2		1	AUGER, LOWER RIGHT
3		1	AUGER, LOWER LEFT
4		1	AUGER, UPPER LEFT
11	A15330	4	STUB SHAFT 190, 240
11	A15327	2	STUB SHAFT 290 UPPER
12	A16748	2	STUB SHAFT 290 LOWER
13	A15330	4	STUB SHAFT, REAR
14	100822	16	SCREW, HEX HD CAP
15	12719	AR	SHIM
16	101952	16	WASHER, STAR
17	100248	32	NUT
18	100337	2	SCREW, HEX HD CAP
19	16750	2	SPACER, STUB SHAFT
20	10721	AR	BRACE, FLIGHTING

5" TUBE FLIGHTING & KICKERS			
ITEM	PART #	QTY	DESCRIPTION
5	15381	AR	FLIGHTING, RIGHT HAND
5	15380	AR	FLIGHTING, LEFT HAND
5	15360	AR	FLIGHTING RIGHT HAND HAY
5	15361	AR	FLIGHTING LEFT HAND HAY
7	15575	AR	KICKER, STANDARD
10	15577	AR	KICKER, STANDARD 2nd PART
9	15947	AR	KICKER, SHARK FIN

6 1/2" TUBE FLIGHTING & KICKERS			
ITEM	PART #	QTY	DESCRIPTION
6	16383	AR	FLIGHTING, RIGHT HAND
6	16382	AR	FLIGHTING, LEFT HAND
6	15362	AR	FLIGHTING RIGHT HAND HAY
6	15363	AR	FLIGHTING LEFT HAND HAY
7	15576	AR	KICKER, STANDARD
10	15577	AR	KICKER, STANDARD 2nd PART
8	15942	AR	KICKER, ANGLE
9	15943	AR	KICKER, SHARK FIN

Note: AR - As Required

Auger Order Form

Example:

Model: 502 Standard (or Hay)

Auger Location: Upper Left

Original Tube Diameter: 6"

Original Flighting Thickness: 1/2"

Flighting Location From Front Flange

Flighting Type: Right Hand

Begin: 1" End: 7"

Flighting Type: Right Hand

Begin: 27" End: 55"

Flighting Type: Left Hand

Begin: 55" End: 127.5"

Kicker Location From Front Flange

Location: 17" Type: Item 7

Location: 136.5" Type: Item 7

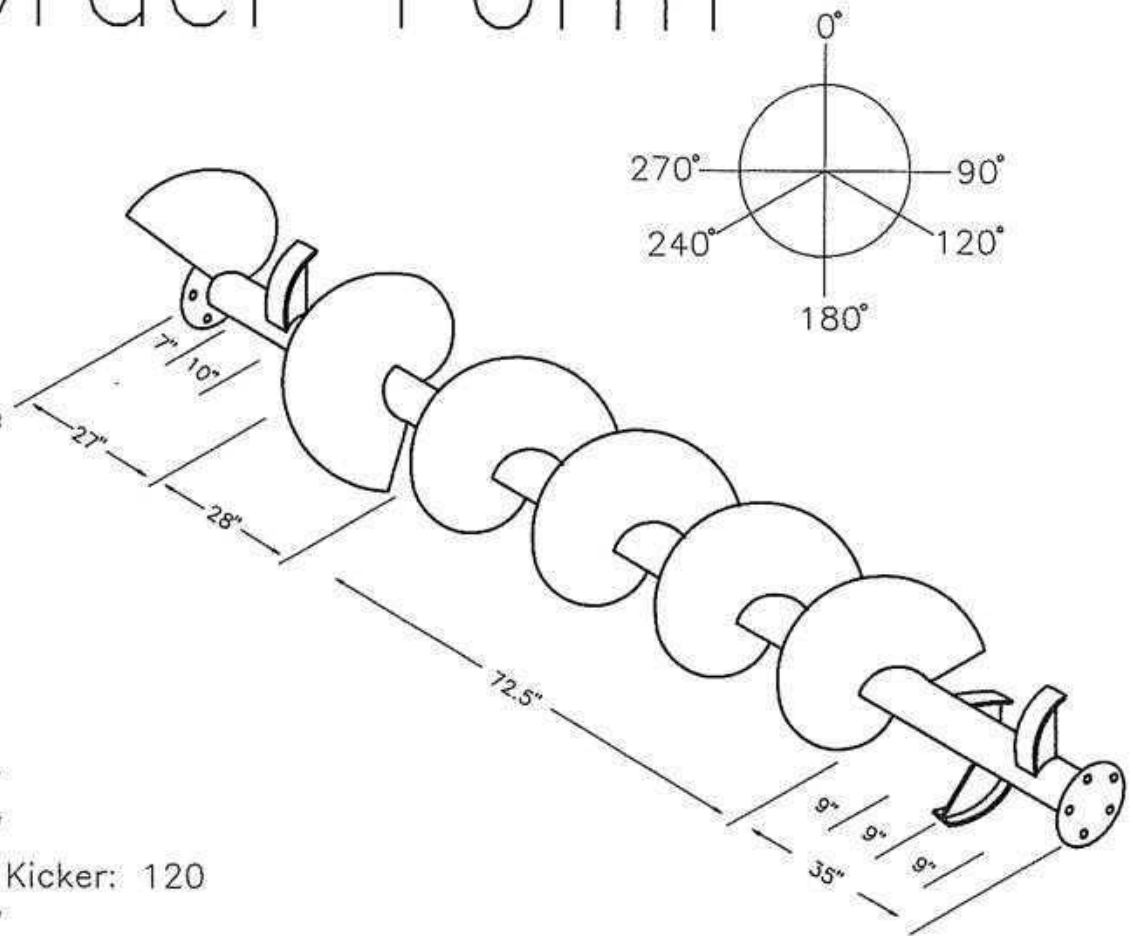
Degrees Clockwise From First Kicker: 120

Location: 145.5" Type: Item 7

Degrees Clockwise From First Kicker: 240

Location: 154.5" Type: Item 7

Degrees Clockwise From First Kicker: 0



AUGER ORDER FORM

Model:
Auger Location:
Original Tube Diameter:
Original Flighting Thickness:

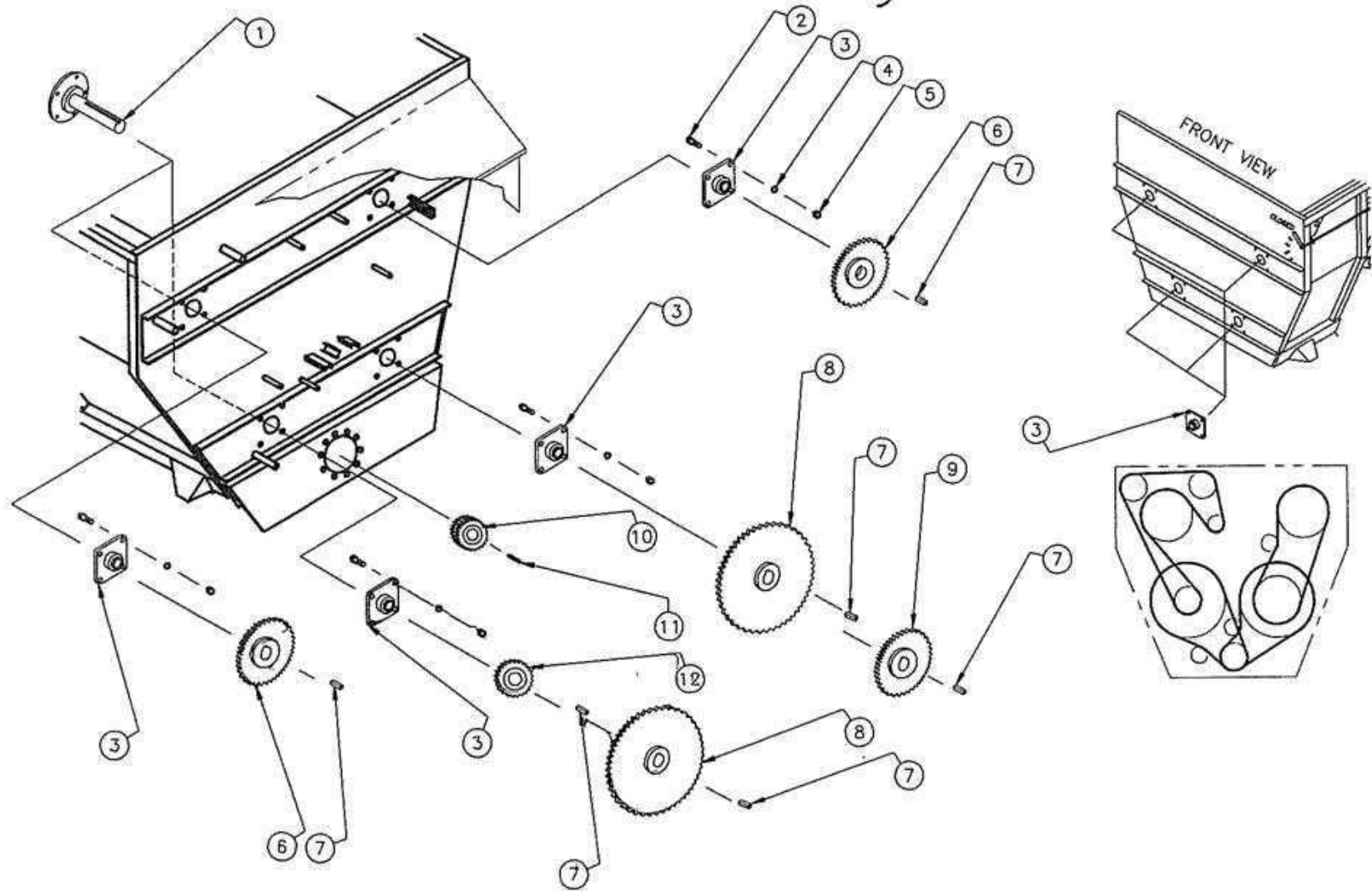
Flighting Location From Front Flange

Flighting Type: Begin:	End:
Flighting Type: Begin:	End:
Flighting Type: Begin:	End:
Flighting Type: Begin:	End:
Flighting Type: Begin:	End:
Flighting Type: Begin:	End:
Flighting Type: Begin:	End:
Flighting Type: Begin:	End:

Kicker Location From Front Flange

Location:	Kicker Type:
Location: Degrees Clockwise From First Kicker:	Kicker Type:
Location: Degrees Clockwise From First Kicker:	Kicker Type:
Location: Degrees Clockwise From First Kicker:	Kicker Type:
Location: Degrees Clockwise From First Kicker:	Kicker Type:
Location: Degrees Clockwise From First Kicker:	Kicker Type:
Location: Degrees Clockwise From First Kicker:	Kicker Type:
Location: Degrees Clockwise From First Kicker:	Kicker Type:
Location: Degrees Clockwise From First Kicker:	Kicker Type:
Location: Degrees Clockwise From First Kicker:	Kicker Type:

Rear Drive Assembly 190 & 240



PARTS LIST

REAR DRIVE 190 & 240

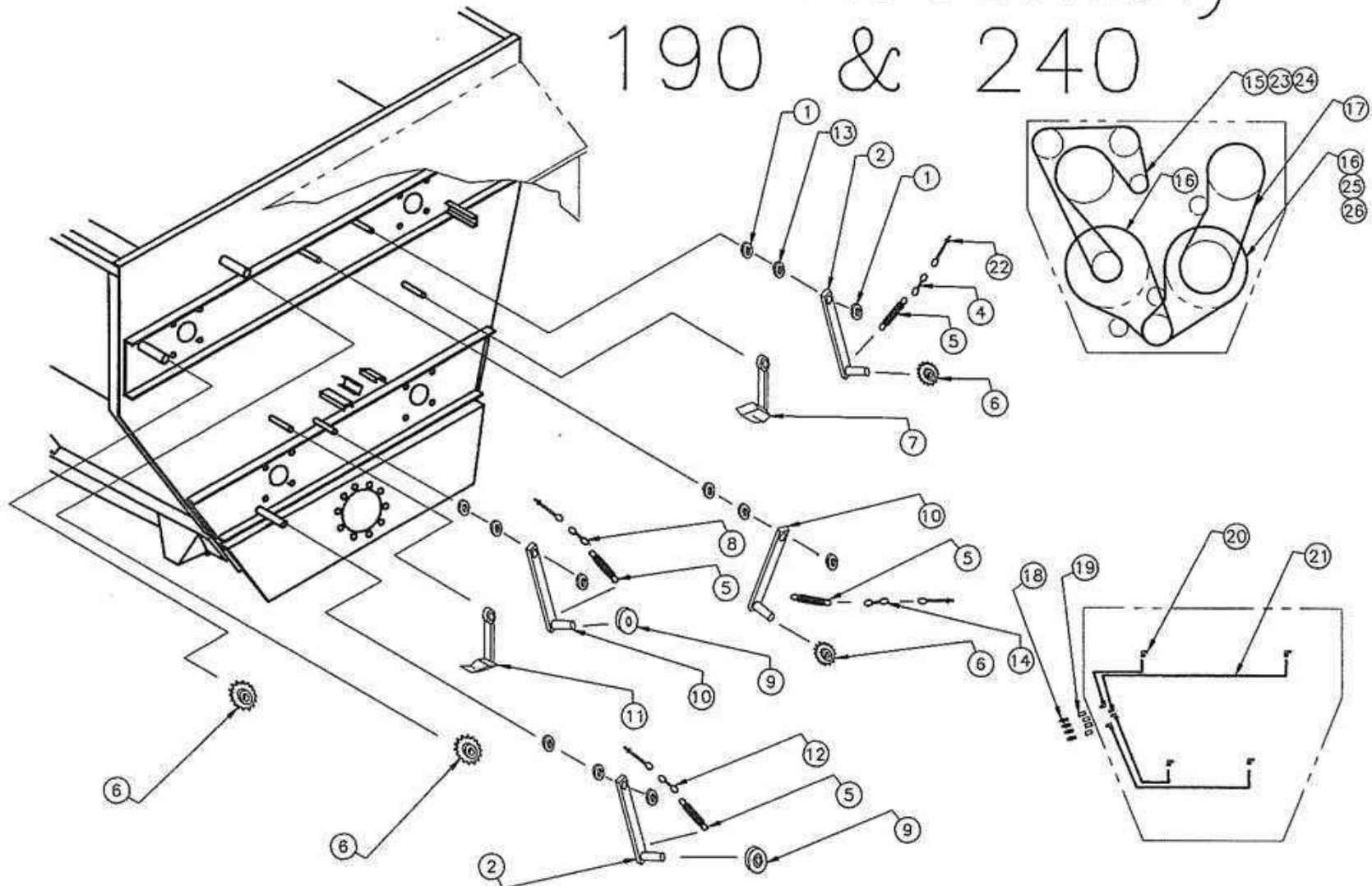
PAGE 1

ITEM	PART #	QTY	DESCRIPTION
1	A15330	4	STUB SHAFT
2	100822	32	SCREW, HEX HD
3	100048	8	BEARING 2 7/16 I.D
4	100273	32	WASHER, LOCK
5	100248	32	NUT, HEX
6	102397	2	SPROCKET 36 TOOTH

ITEM	PART #	QTY	DESCRIPTION
7	10984	6	KEY, SQR.
8	102395	2	SPROCKET 60 TOOTH
9	102398	1	SPROCKET 32 TOOTH
10	102399	1	SPROCKET 14 TOOTH
11	4435	1	KEY, SQR.
12	102396	1	SPROCKET 23 TOOTH

Note: AR - As Required

Rear Drive Assembly 190 & 240



PARTS LIST

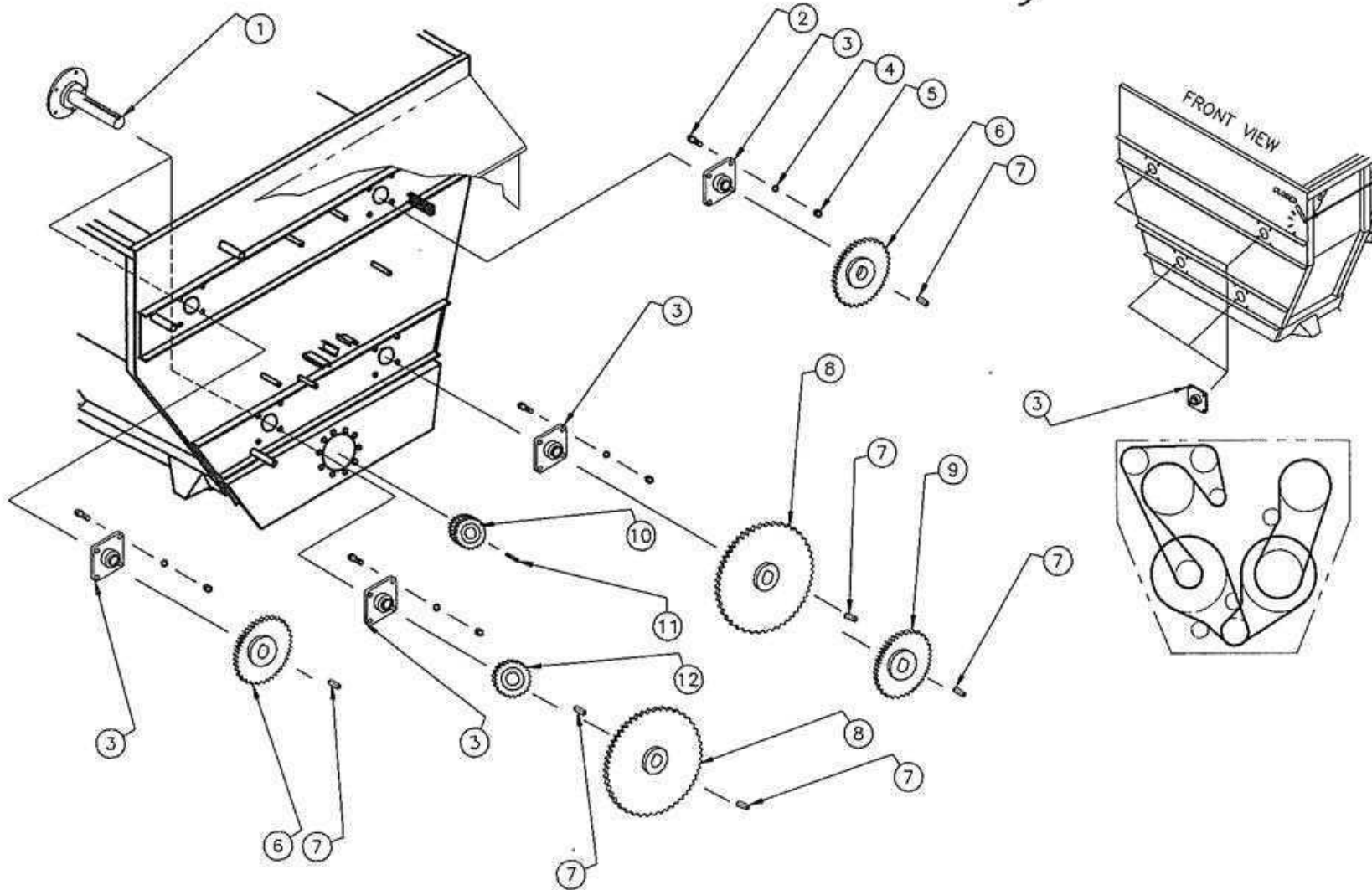
REAR DRIVE 190 & 240

PAGE 2

ITEM	PART #	QTY	DESCRIPTION	ITEM	PART #	QTY	DESCRIPTION
1	101829	7	SET COLLAR	14	7070514	1	CHAIN 2 LINKS
2	A16084	2	TENSIONER ARM ASS'Y	15	101991	1	CHAIN W/CON.
3	101840	4	EYE BOLT	16	102025	2	CHAIN W/CON.
4	7070514	1	CHAIN 3 LINKS	17	101990	1	CHAIN W/CON.&OFF.
5	101831	4	SPRING	18	100218	4	GREASE ZERK
6	A13374	4	SPROCKET W/BEARING	19	101914	4	COUPLING
7	A16232	1	OILER ASS'Y	20	101904	8	FITTING 90 DEG.
8	7070514	1	CHAIN 6 LINKS	21	7070959	1	TUBING, ALUM. 16'
9	A13375	2	SPROCKET W/BEARING	22	100254	8	NUT, HEX
10	A15365	2	TENSIONER ARM ASS'Y	23	100293	AR	CONNECTOR LINK
11	A15939	1	OILER ASS'Y	24	100314	AR	OFFSET LINK
12	7070514	1	CHAIN 8 LINKS	25	100316	AR	CONNECTOR LINK
13	102355	4	BEARING, NYLON	26	100315	AR	OFFSET LINK

Note: AR - As Required

Rear Drive Assembly 290



PARTS LIST

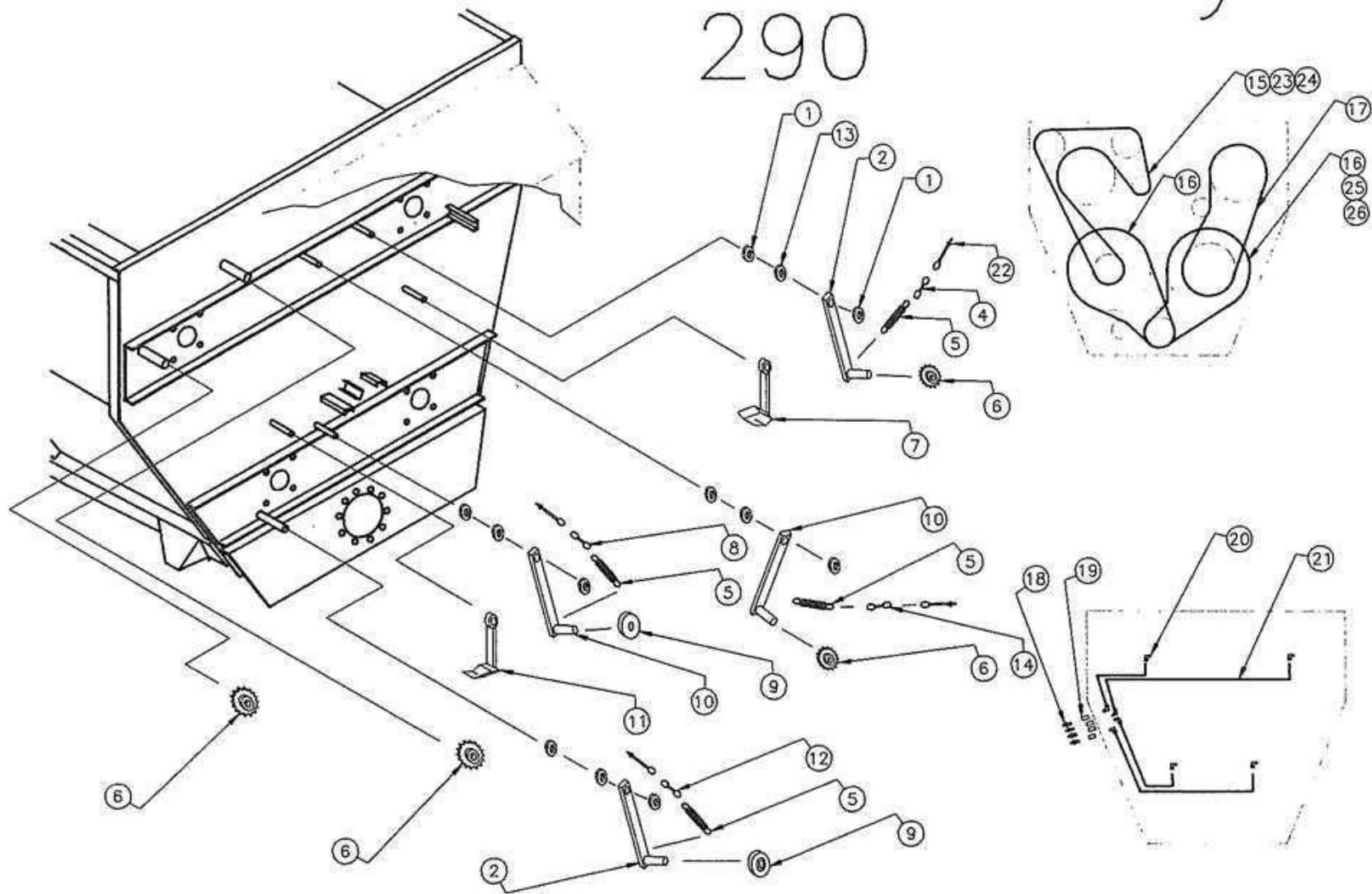
REAR DRIVE 290

PAGE 1

ITEM	PART #	QTY	DESCRIPTION	ITEM	PART #	QTY	DESCRIPTION
1	A15330	4	STUB SHAFT	7	10984	6	KEY, SQR.
2	100822	32	SCREW, HEX HD	8	102395	2	SPROCKET 60 TOOTH
3	100746	4	BEARING, (BOTTOM AUGERS)	9	102398	1	SPROCKET 32 TOOTH
3	100048	4	BEARING, (TOP AUGERS)	10	102399	1	SPROCKET 14 TOOTH
4	100273	32	WASHER, LOCK	11	4435	1	KEY, SQR.
5	100248	32	NUT, HEX	12	102396	1	SPROCKET 23 TOOTH
6	102397	2	SPROCKET 36 TOOTH				

Note: AR - As Required

Rear Drive Assembly 290



PARTS LIST

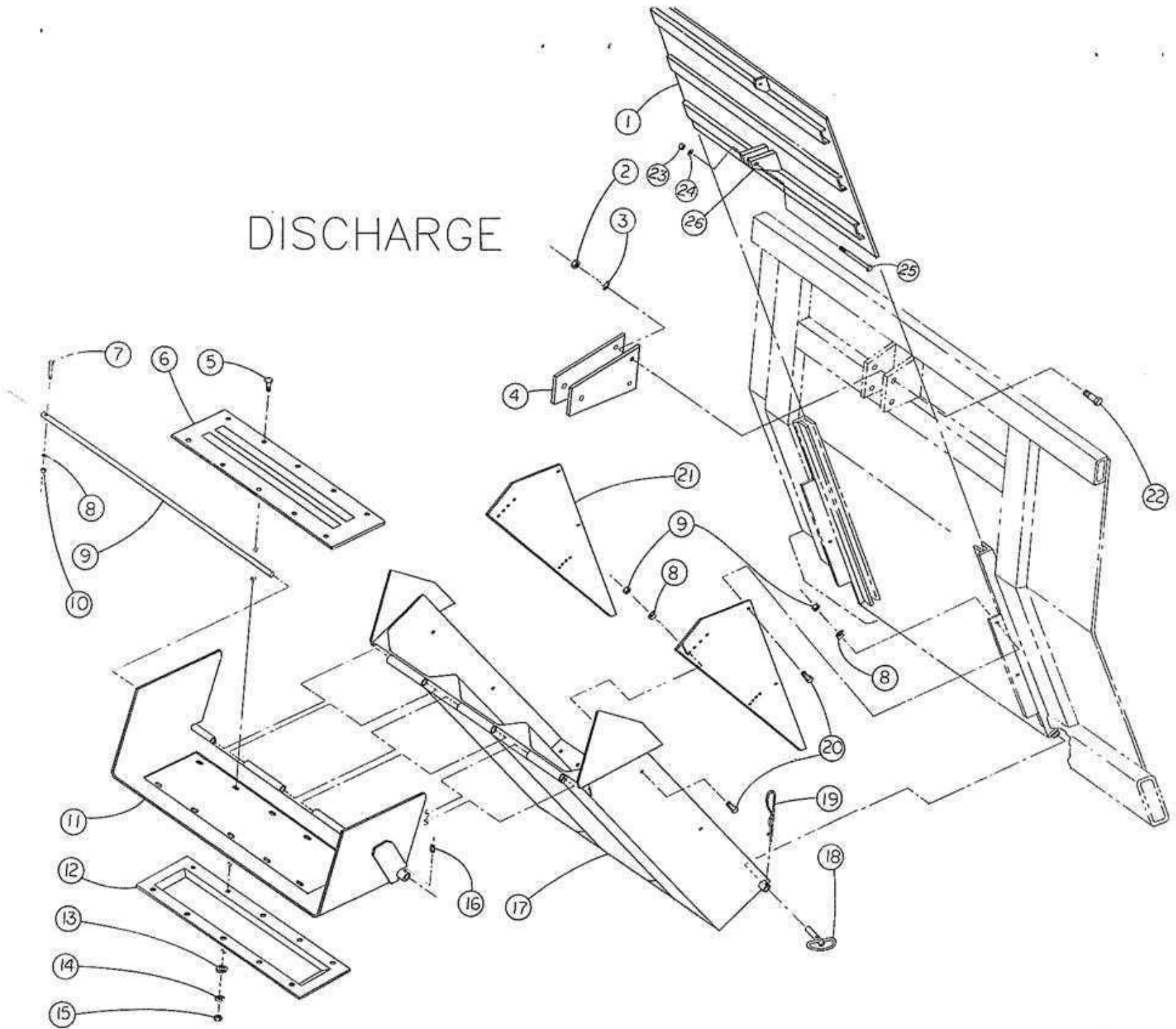
REAR DRIVE 290

PAGE 2

ITEM	PART #	QTY	DESCRIPTION	ITEM	PART #	QTY	DESCRIPTION
1	101829	7	SET COLLAR	14	7070514	1	CHAIN 2 LINKS
2	A16084	2	TENSIONER ARM ASS'Y	15	101991	1	CHAIN W/CON.
3	101840	4	EYE BOLT	16	102406	2	CHAIN W/CON.
4	7070514	1	CHAIN 3 LINKS	17	101990	1	CHAIN W/CON.&OFF.
5	101831	4	SPRING	18	100218	4	GREASE ZERK
6	A13374	4	SPROCKET W/BEARING	19	101914	4	COUPLING
7	A16232	1	OILER ASS'Y	20	101904	8	FITTING 90 DEG.
8	7070514	1	CHAIN 6 LINKS	21	7070959	1	TUBING, ALUM. 16'
9	A13375	2	SPROCKET W/BEARING	22	100254	8	NUT, HEX
10	A15365	2	TENSIONER ARM ASS'Y	23	100293	AR	CONNECTOR L. #80
11	A15939	1	OILER ASS'Y	24	100314	AR	OFFSET L. #80
12	7070514	1	CHAIN 8 LINKS	25	101037	AR	CONNECTOR L. #100
13	102355	4	BEARING, NYLON	26	101036	AR	OFFSET L. #100

Note: AR - As Required

DISCHARGE



PARTS LIST DISCHARGE

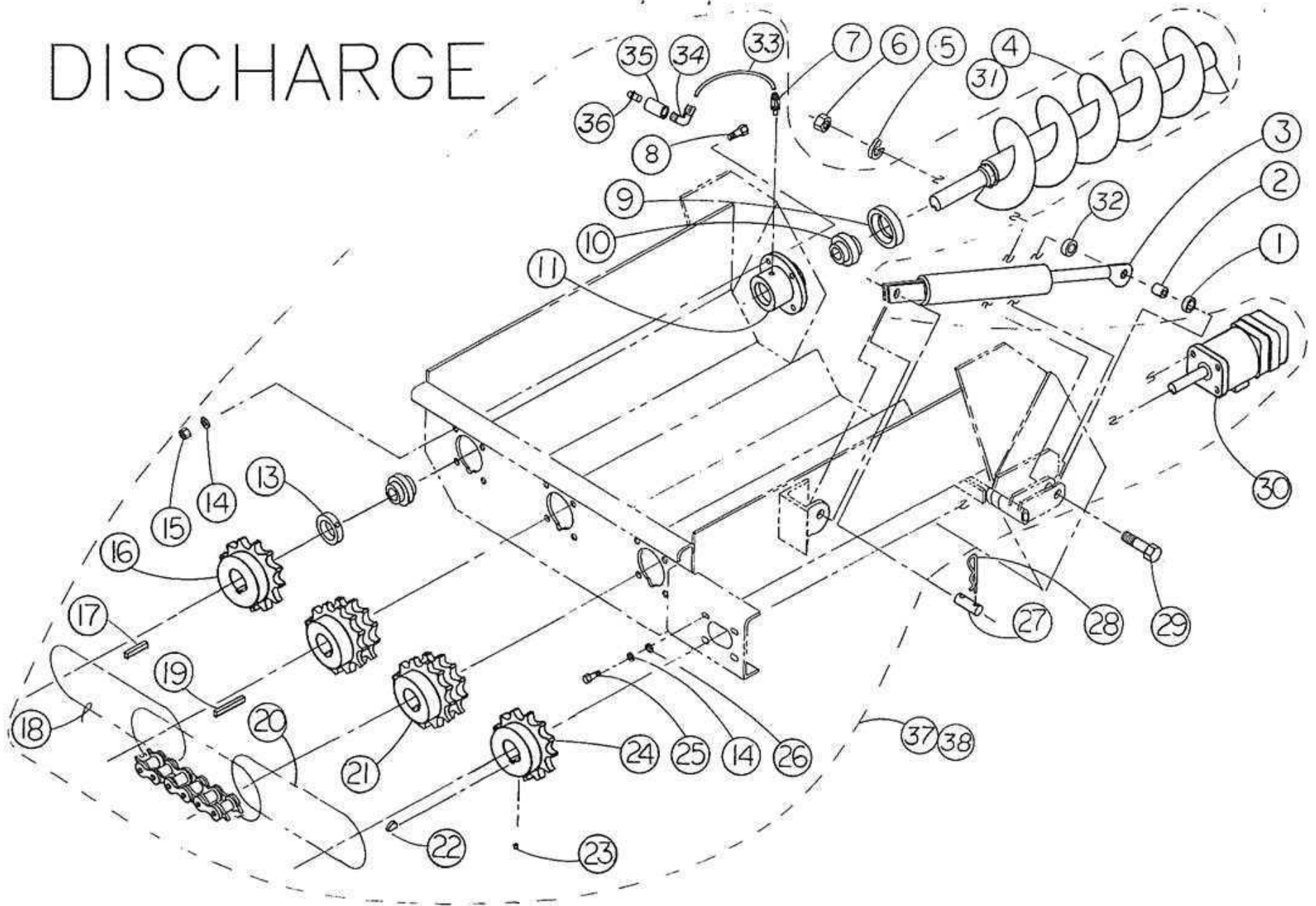
PAGE 1

ITEM	PART #	QTY	DESCRIPTION	ITEM	PART #	QTY	DESCRIPTION
1	A15290	1	DOOR W/O CYL CLEVIS	14	100170	10	WASHER, LOCK
2	300826	4	NUT, HEX	15	100297	10	NUT
3	100272	4	LOCK WASHER	16	101896	1	SCREW, SQR. HD
4	15294	2	CLEVIS, CYL. MOUNT	*17	A15260	AR	DIS. BOTTOM, STD. (32")
5	102283	10	SCREW	*17	A16234	AR	DIS. BOTTOM, EXT. (44")
6	101249	AR	MAGNET	18	A15285	2	DISCHARGE PIN
6	16808	AR	PLATE, USE W/O MAG.	19	101018	2	CLIP, HAIR PIN
7	300898	1	SCREW, HEX HD	20	101250	8	SCREW
8	100271	1	WASHER, LOCK	21	15266	2	PLATE, HANGER
9	15276	1	PIN, CHUTE HINGE	22	101444	4	SCREW, HEX HD
10	100254	1	NUT	23	100297	1	NUT
11	A15933	1	CHUTE, W/MAG. GUARD	24	100713	1	WASHER, FLAT
12	A15730	AR	MAGNET GUARD	25	101895	1	SCREW
13	100713	10	WASHER, FLAT	26	15292	2	CYL. MOUNT DOOR

Note: AR - As Required

*17 - When ordering a new discharge, auger, auger flighting, bottom, or liner measure length. Measurements are taken from under any auger from the back plate to the end (where chute begins).

DISCHARGE



PARTS LIST DISCHARGE

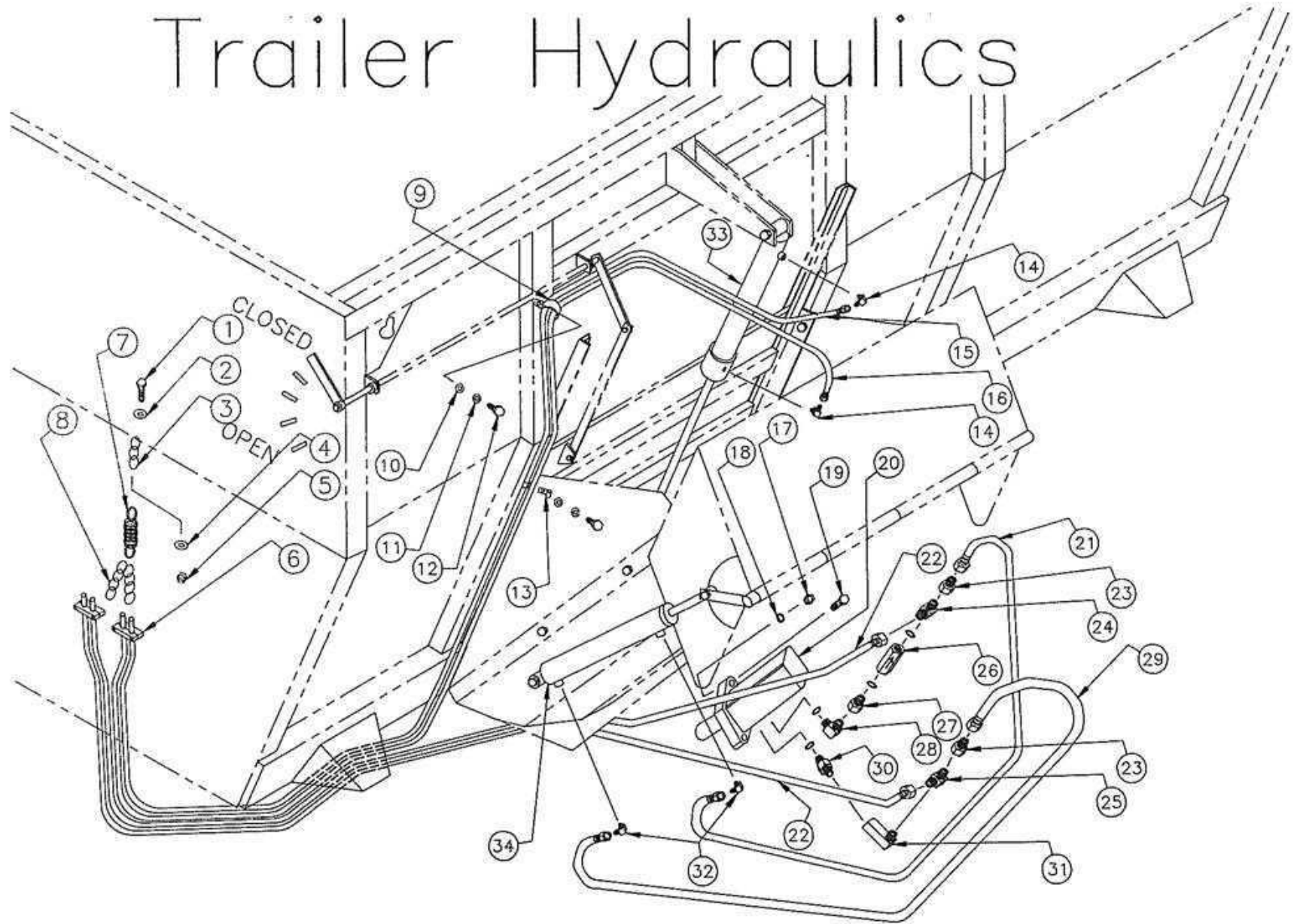
PAGE 2

ITEM	PART #	QTY	DESCRIPTION	ITEM	PART #	QTY	DESCRIPTION
1	14574	1	BUSHING, SHORT	20	101898	1	CHAIN
2	15708	1	CYLINDER MOUNT TUBE	21	101700	2	SPROCKET
3	A15956	1	DROP CHUTE CYLINDER	22	101899	1	KEY, WOODRUFF
*4	A15300	3	AUGER, STANDARD (32")	23	100703	AR	SET SCREW
*4	A16236	3	AUGER, EXTENDED (44")	24	102128	1	SPROCKET
5	100272	1	WASHER, LOCK	25	101250	4	SCREW
6	300826C	1	NUT	26	100300	4	WASHER, FLAT
7	101903	3	FITTING, STRAIGHT	27	14533	1	PIN, 3/4" DIA.
8	100240	12	SCREW, HEX HD	28	101018	2	HAIR PIN
9	16608	3	BEARING CAP	29	101735	1	SCREW, HEX HD
10	101843	6	BEARING	30	101900	1	MOTOR, HYD.
11	A14590	3	BEARING HOUSING	31	15408	AR	FLIGHTING, AUGER
13	NSS	3	BEARING COLLAR	32	14573	1	BUSHING LONG
14	100271	16	WASHER, LOCK	33	7070959	40"	TUBING, GREASE
15	100254	12	NUT	34	101904	3	FITTING, 90 DEG.
16	100072	1	SPROCKET	35	101914	3	COUPLING
17	15308	1	KEY	36	100218	3	ZERK, GREASE
18	101897	2	CHAIN	*37	A16733	1	DISCHARGE ASS'Y, STD. (32")
19	15309	2	KEY	*38	A16735	1	DISCHARGE ASS'Y, EXT. (44")

Note: AR - As Required

*4, 37, 38 - When ordering a new discharge, auger, auger flighting, bottom, or liner measure length. Measurements are taken from under any auger from the back plate to the end (where chute begins).

Trailer Hydraulics



PARTS LIST

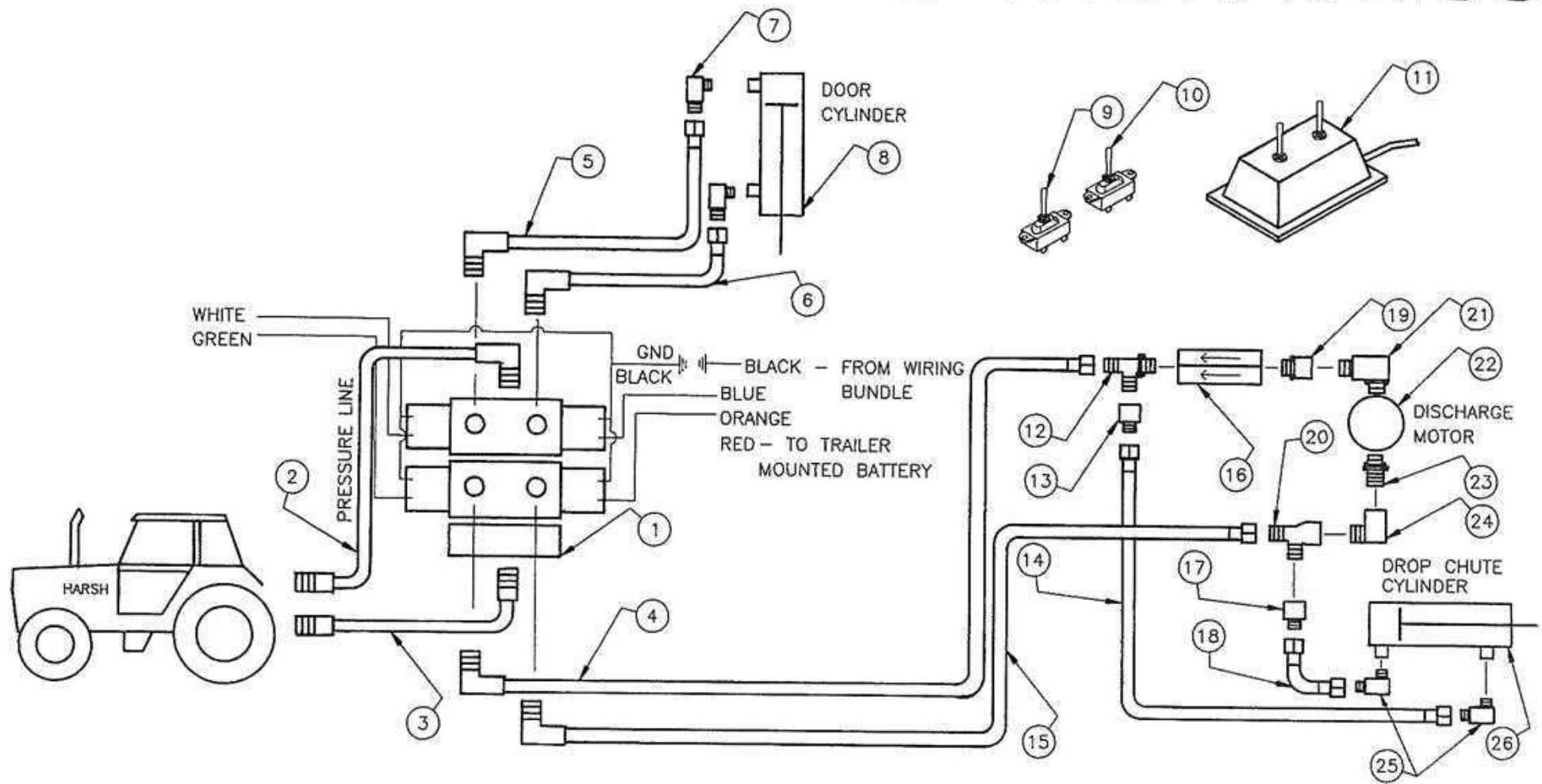
TRAILER HYDRAULICS

SERIAL NUMBER 19B0357 AND ABOVE

ITEM	PART #	QTY	DESCRIPTION	ITEM	PART #	QTY	DESCRIPTION
1	100323	1	SCREW	19	100226	4	SCREW
2	100443	1	WASHER, FLAT	20	101900	1	MOTOR, HYDRAULIC
3	7070514	1	CHAIN, 3 LINKS	21	102087	1	HOSE ASS'Y, 18" STD. DISCHARGE
4	100304	1	WASHER, LOCK	21	A16823	1	HOSE ASS'Y, 31" EXT. DISCHARGE
5	100221	1	NUT	22	102167	2	HOSE ASS'Y, 11ft
6	102256	2	DOUBLE HOSE CLAMP	23	102158	2	ADAPTER, REDUCER
7	100447	1	SPRING	24	102405	1	TEE
8	7070514	1	CHAIN, 7 LINKS	25	102141	1	TEE
9	102255	2	HOSE CLAMP	26	102404	1	CHECK VALVE
10	100443	2	WASHER, FLAT	27	102162	1	ADAPTER
11	100304	2	WASHER, LOCK	28	102403	1	ELBOW
12	100323	2	SCREW	29	102091	1	HOSE ASS'Y, 13" STD. DISCHARGE
13	100547	4	HOSE CLAMP	29	A16822	1	HOSE ASS'Y, 29" EXT. DISCHARGE
14	102144	2	ELBOW	30	102161	1	ADAPTER
15	102171	1	HOSE ASS'Y, 16.5 ft	31	102402	1	ELBOW
16	102170	1	HOSE ASS'Y, 18 ft	32	101244	2	ELBOW
17	100250	4	NUT	33	A13882	1	CYLINDER, DOOR
18	100176	4	WASHER, LOCK	34	A15956	1	CYLINDER, CHUTE

Note: AR - As Required

ELECTRIC CONTROL HYDRAULICS



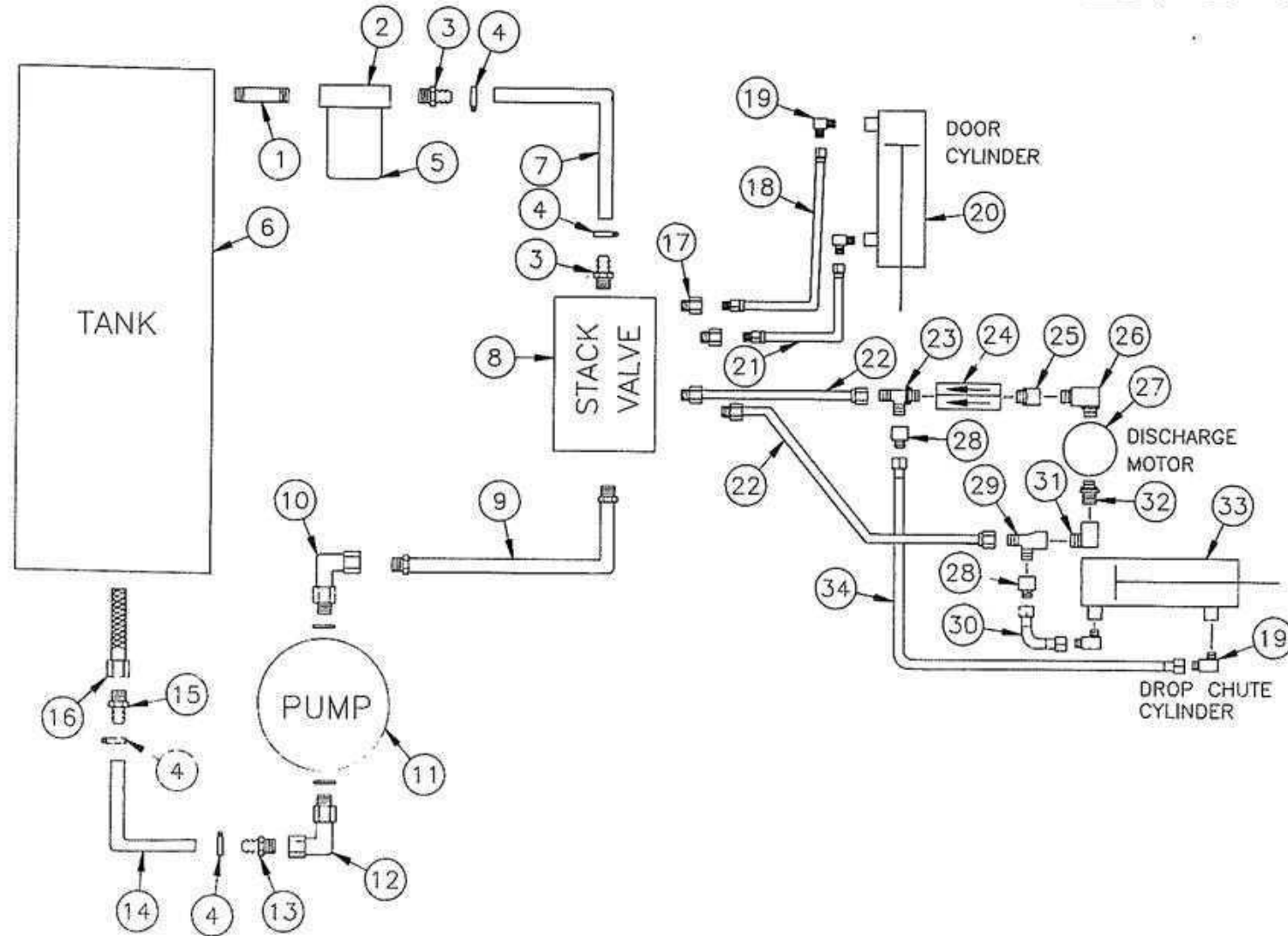
PARTS LIST

ELECTRIC CONTROL HYDRAULICS

ITEM	PART #	QTY	DESCRIPTION	ITEM	PART #	QTY	DESCRIPTION
1	102139	1	VALVE, ASSEMBLY	14	A16823	1	HOSE ASS'Y, 31" LG EXT DISCHARGE
2	102390	1	HOSE ASS'Y, 11 FT. W/90 DEG FIT.	15	102392	1	HOSE ASS'Y, 6 FT
3	102391	1	HOSE ASS'Y, 11 FT.	16	102404	1	VALVE, CHECK
4	102392	1	HOSE ASS'Y, 6 FT. W/90 DEG. FIT.	17	102158	1	ADAPTER, REDUCER
5	102393	1	HOSE ASS'Y, 8 FT. W/90 DEG. FIT.	18	102091	1	HOSE ASS'Y, 13" LG STD DISCHARGE
6	102394	1	HOSE ASS'Y, 10 FT. W/90 DEG FIT.	18	A16822	1	HOSE ASS'Y, 29"LG EXT DISCHARGE
7	102144	2	ELBOW, #8JIC & 3/8NPT	19	102162	1	ADAPTER
8	A13882	1	CYLINDER ASS'Y, DOOR	20	102141	1	TEE, 1-FEMALE 2-MALE
9	490201	1	SWITCH, TOGGLE	21	102403	1	ELBOW
10	490200	1	SWITCH, TOGGLE 2 POLE MOMENTARY	22	101900	1	MOTOR, HYDRAULIC
11	A16738	1	ELEC. CONTROL ASSEMBLY	23	102161	1	ADAPTER
12	102405	1	TEE, ALL MALE	24	102402	1	ELBOW
13	102158	1	ADAPTER, REDUCER	25	101244	2	ELBOW
14	102087	1	HOSE ASS'Y, 18" LG STD DISCHARGE	26	A15956	1	CYLINDER ASS'Y, CHUTE

Note: AR - As Required

INTEGRAL HYDRAULICS



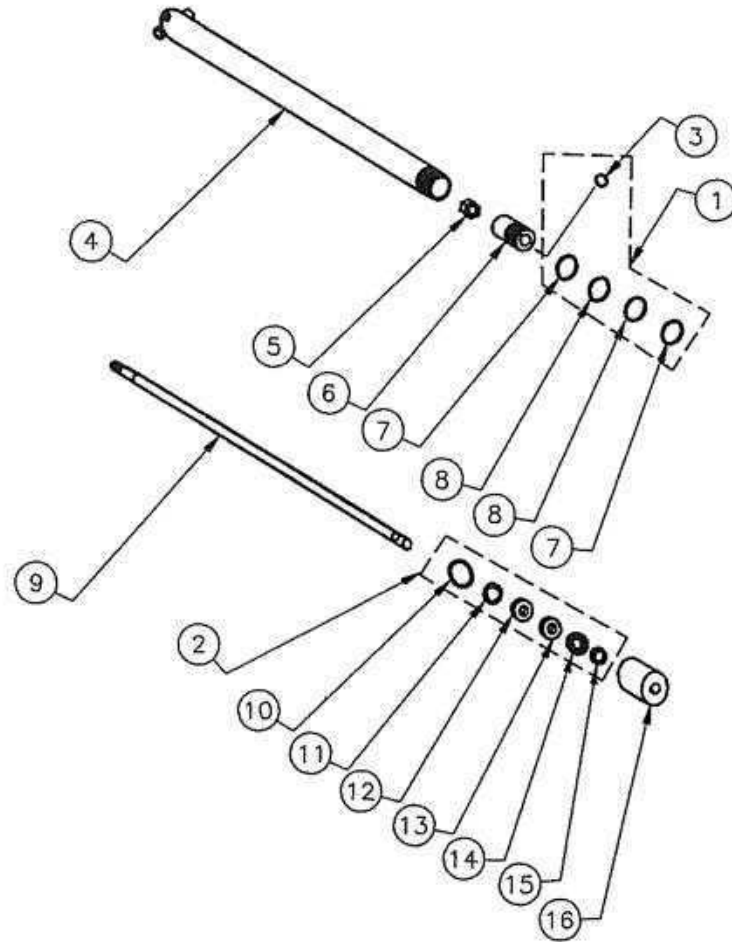
PARTS LIST

INTEGRAL HYDRAULICS

ITEM	PART #	QTY	DESCRIPTION	ITEM	PART #	QTY	DESCRIPTION
1	101842	1	NIPPLE	19	101244	4	ELBOW, 90 DEG.
2	101242	1	ADAPTER & FILTER	20	A13882	1	CYLINDER ASS'Y, DOOR
3	100831	2	HOSE BARB	21	102089	1	HOSE ASS'Y, 72" LG.
4	100514	4	HOSE CLAMP	22	102441	2	HOSE ASS'Y, 92" LG.
5	4310	1	HYDRAULIC FILTER	23	102405	1	TEE, ALL MALE ENDS
6	A34370	1	HYDRAULIC RESERVOIR	24	102404	1	CHECK VALVE
7	11835	1	HOSE, 72" LG.	25	102162	1	ADAPTER
8	102092	1	DIRECTIONAL VALVE	26	102403	1	ELBOW, 90 DEG.
9	101857	1	HOSE ASS'Y, 60" LG.	27	101900	1	MOTOR, HYDRAULIC
10	102093	1	ELBOW, 90 DEG.	28	102158	2	ADAPTER
11	102085	1	PUMP	29	102141	1	TEE, 1-FEMALE 2-MALE ENDS
12	102094	1	ELBOW, 90 DEG.	30	102091	1	HOSE ASS'Y, 13" STD. DISCHARGE
13	100515	1	HOSE BARB	30	A16822	1	HOSE ASS'Y, 29" EXT. DISCHARGE
14	15909	1	HOSE, 50" LG.	31	102402	1	ELBOW
15	102240	1	HOSE BARB	32	102161	1	ADAPTER
16	100978	1	TANK SCREEN	33	A15956	1	CYLINDER ASS'Y, CHUTE
17	102090	2	ADAPTER	34	102087	1	HOSE ASS'Y, 18" STD. DISCHARGE
18	102089	1	HOSE ASS'Y, 72" LG.	34	A16823	1	HOSE ASS'Y, 31" EXT. DISCHARGE

Note: AR - As Required

DISCHARGE DOOR CYLINDER



PARTS LIST

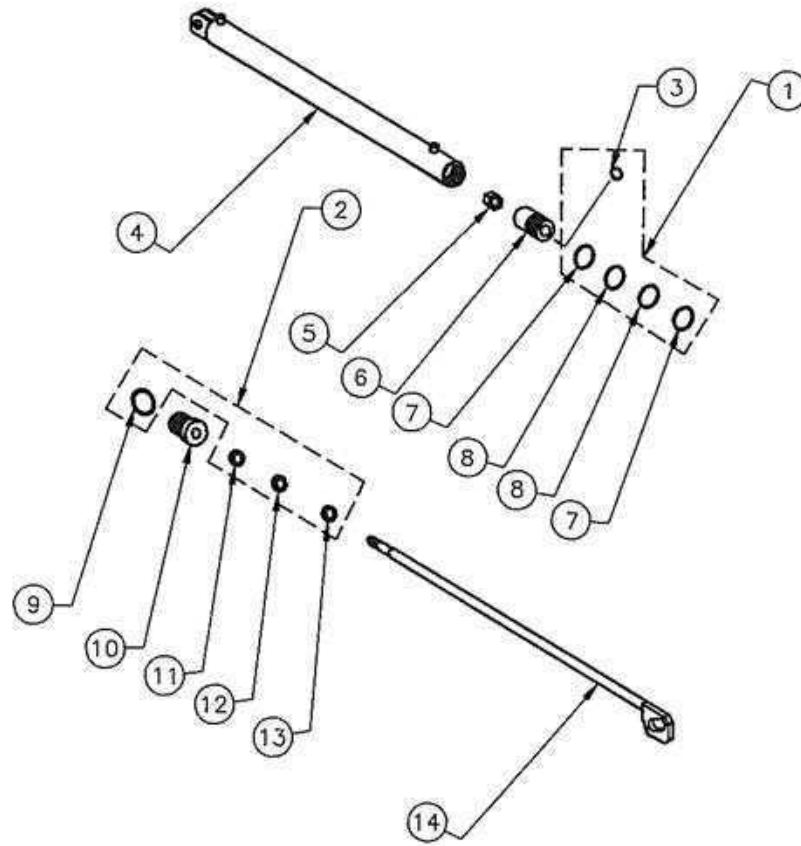
DISCHARGE DOOR CYLINDER

ITEM	PART #	QTY	DESCRIPTION	ITEM	PART #	QTY	DESCRIPTION
1	A9252	1	SEAL KIT, PISTON	10	*100190	1	O-RING
2	A9409	1	SEAL KIT, GLAND NUT	11	*100143	1	RETAINING RING
3		1	SEAL, EARLY MODELS	12	*15605	1	BUSHING
4	A13883	1	BODY ASS'Y	13	*101957	1	POLY SEAL
5	100248	1	NUT	14	*15604	1	WIPER BUSHING
6	10092	1	PISTON	15	*100133	1	WIPER RING
7	*100153	2	O-RING	16	12047	1	GLAND NUT
8	*100732	2	BACK-UP RING	17	A13882	1	CYLINDER ASS'Y, DOOR
9	*12477	1	PISTON ROD				

Note: AR - As Required

* - Not Sold Individually

DISCHARGE CHUTE CYLINDER



PARTS LIST

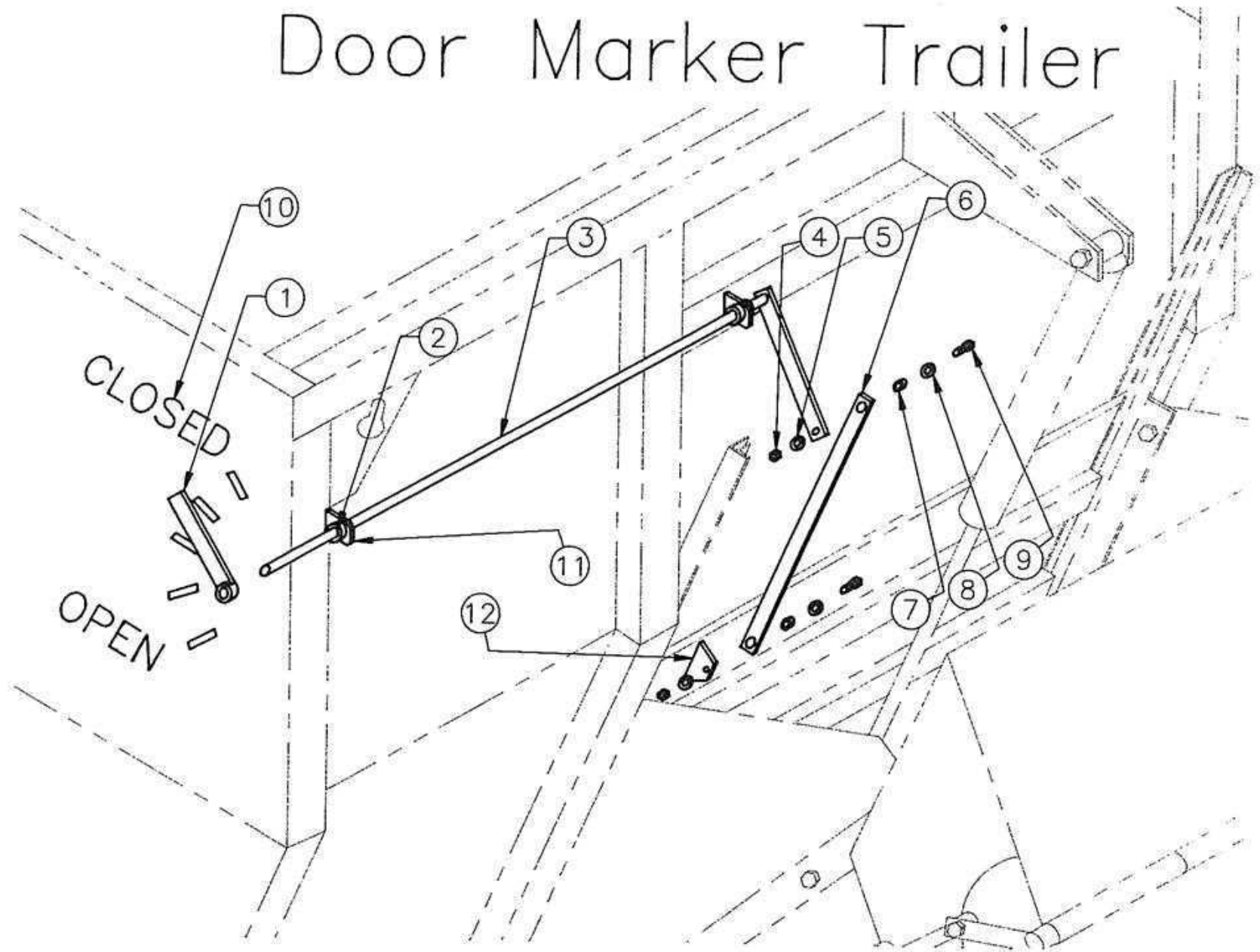
DROP CHUTE CYLINDER

ITEM	PART #	QTY	DESCRIPTION	ITEM	PART #	QTY	DESCRIPTION
1	A9252	1	SEAL KIT, PISTON	9	*100901	1	O-RING
2	A9400	1	SEAL KIT, GLAND NUT	10	14503	1	GLAND NUT
3		1	O-RING	11	*101699	1	O-RING
4	A15957	1	CYLINDER BODY	12	*100698	1	BACK-UP RING
5	100248	1	NUT	13	*100133	1	WIPER RING
6	10092	1	PISTON	14	A14507	1	CYLINDER SHAFT
7	*100153	2	O-RING	15	A15956	1	CYLINDER ASS'Y, CHUTE
8	*100732	2	BACK-UP RING				

Note: AR - As Required

* - Not Sold Individually

Door Marker Trailer



PARTS LIST DOOR MARKER

ITEM	PART #	QTY	DESCRIPTION
1	A15447	1	POINTER ASS'Y
2	101951	2	SHAFT COLLAR
3	A15446	1	ARM ASSEMBLY
4	100297	2	NUT
5	100170	2	WASHER, LOCK
6	15442	1	LINKAGE BAR

ITEM	PART #	QTY	DESCRIPTION
7	101981	2	SPACER
8	100443	2	WASHER, FLAT
9	300892C	2	SCREW
10	101992	1	DOOR MARKER DECAL
11	15445	3	ROD MOUNT
12	15701	1	DOOR MARKER TAB

Note: AR - As Required

PARTS LIST

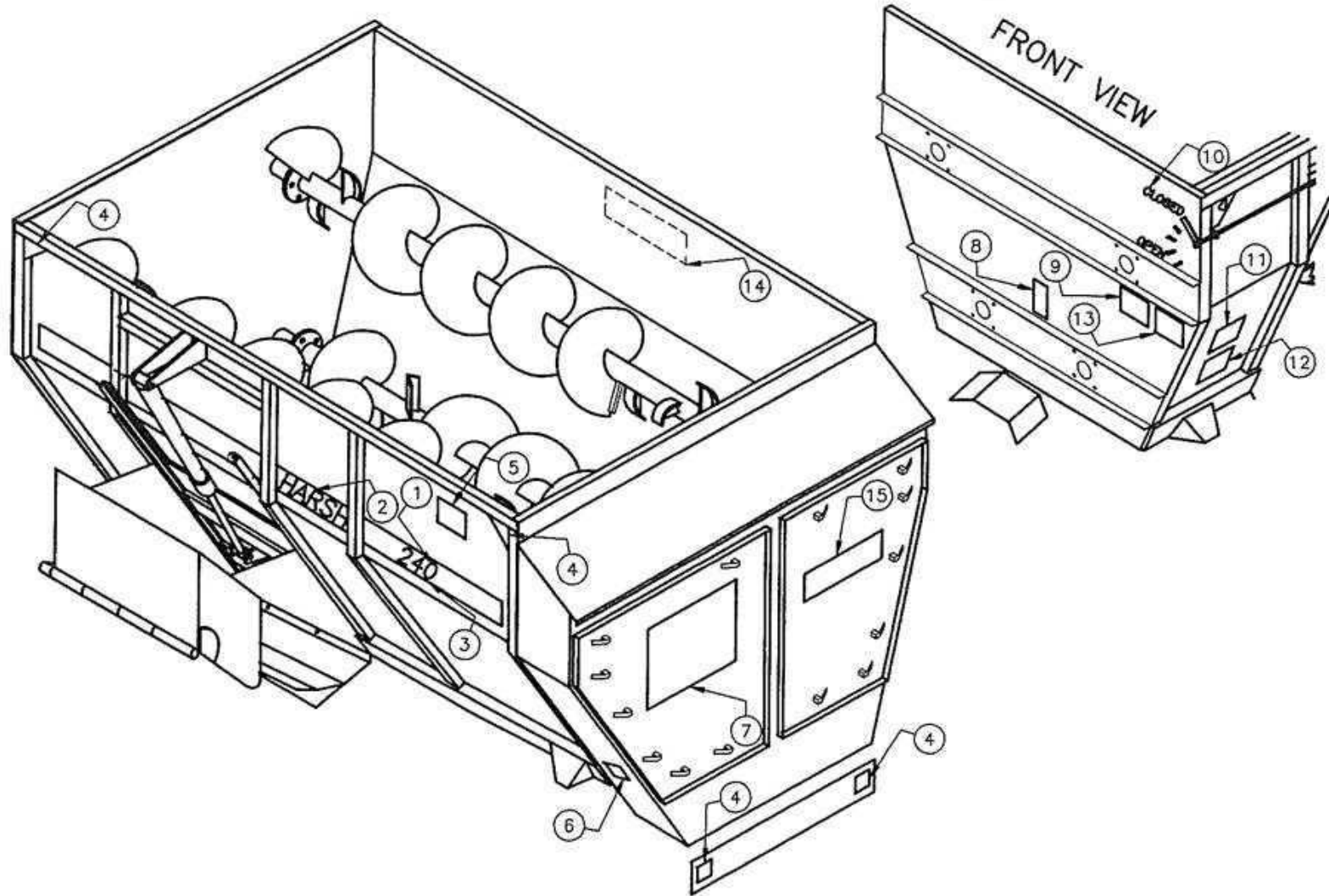
REAR OIL BATH DOORS

ITEM	PART #	QTY	DESCRIPTION
1	100297	6	NUT
2	100170	6	WASHER, LOCK
3	100713	6	WASHER, FLAT
4	101134	6	SCREW
5	100221	24	NUT
6	100304	24	WASHER, LOCK
7	15239	1	CENTER DOOR POST
8	13349	3	HINGE, RIGHT

ITEM	PART #	QTY	DESCRIPTION
9	13350	3	HINGE, LEFT
10	101819	12	SCREW, 3/4 LG.
11	100852	12	SCREW, 1/2 LG.
12	15240	1	DOOR, RIGHT
13	15241	1	DOOR, LEFT
14	101305	8	LATCH
15	302075C	26'	DOOR SEAL

Note: AR - As Required

Mixer Decals



PARTS LIST MIXER DECALS

ITEM	PART #	QTY	DESCRIPTION	ITEM	PART #	QTY	DESCRIPTION
1	102310	2	190 DECAL	9	102107	1	DANGER, 540 RPM
1	102311	2	240 DECAL	10	101992	1	DOOR MARKER
1	102312	2	290 DECAL	11	102069	1	MAINTENANCE
2	102309	2	HARSH SIDE DECAL	12	102109	1	CAUTION, WELDING
3	102318	18'	RED STRIPE SIDE 190	13	102110	1	HAYMOGENIZER LOADING
3	102318	22'	RED STRIPE SIDE 240	14	102359	1	HAYMOGENIZER SIDE
3	102318	26'	RED STRIPE SIDE 290	15	102113	1	HAYMOGENIZER REAR
4	102097	6	NO LIFT DECAL	*16	A9433	1	HAYMOGENIZER DECAL KIT
5	102339	1	DANGER, ROT. AUGERS	*17	A7453	1	190 DECAL KIT
6	102070	1	OIL BATH MAINTENANCE	*18	A7454	1	240 DECAL KIT
7	101606	1	REAR DOOR DECAL	*19	A7455	1	290 DECAL KIT
8	102358	1	DANGER, DRIVE LINE	20	102372	2	STATIONARY DECAL

Note: *16 Kit Includes Items 13, 14, 15.

*17-19 Kits include all necessary decals except HAYMOGENIZER decals for that mixer.

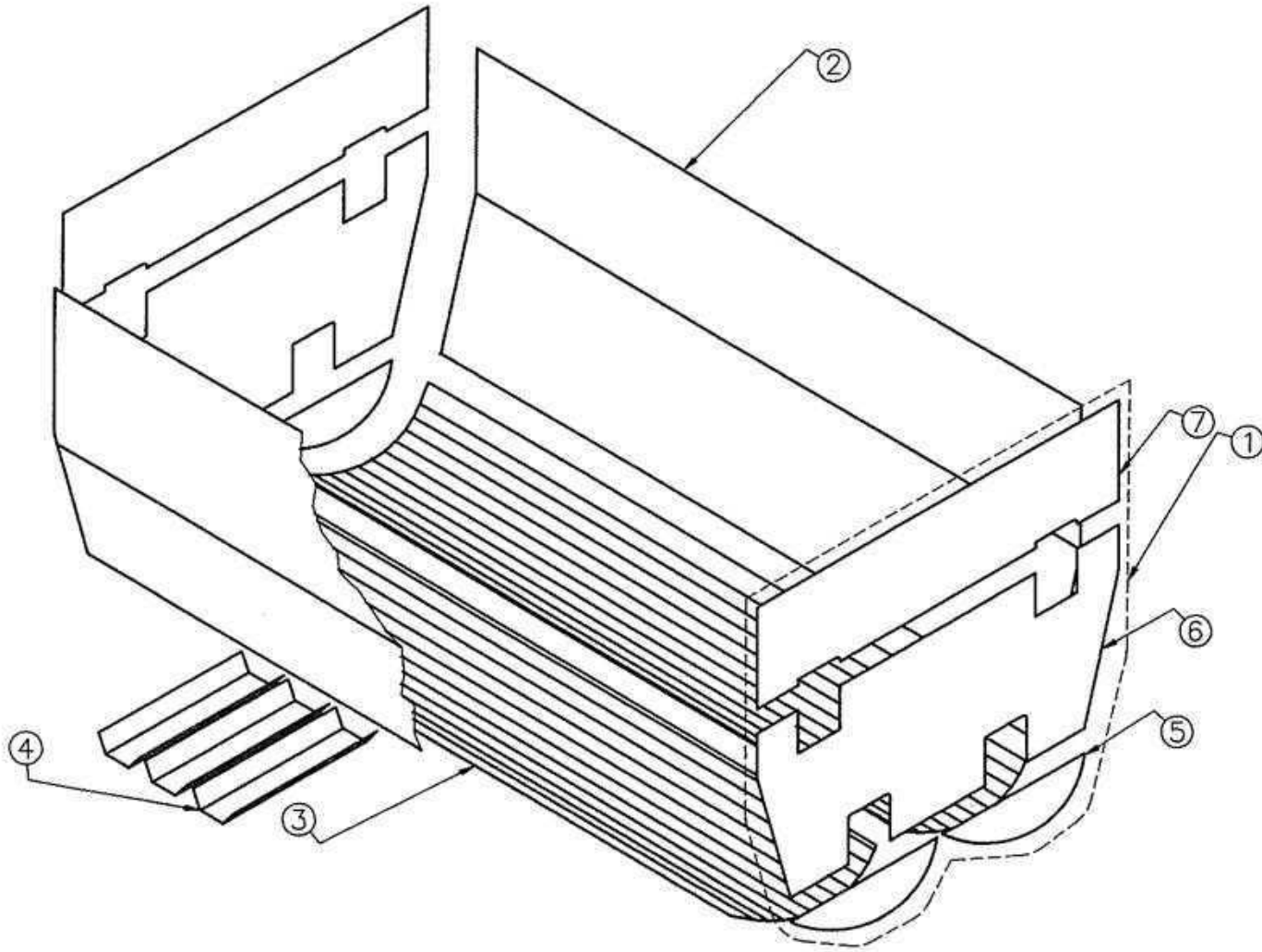
PARTS LIST MIXER DECALS

ITEM	PART #	QTY	DESCRIPTION	ITEM	PART #	QTY	DESCRIPTION
1	102310	2	190 DECAL	9	102107	1	DANGER, 540 RPM
1	102311	2	240 DECAL	10	101992	1	DOOR MARKER
1	102312	2	290 DECAL	11	102069	1	MAINTENANCE
2	102309	2	HARSH SIDE DECAL	12	102109	1	CAUTION, WELDING
3	102318	18'	RED STRIPE SIDE 190	13	102110	1	HAYMOGENIZER LOADING
3	102318	22'	RED STRIPE SIDE 240	14	102359	1	HAYMOGENIZER SIDE
3	102318	26'	RED STRIPE SIDE 290	15	102113	1	HAYMOGENIZER REAR
4	102097	6	NO LIFT DECAL	*16	A9433	1	HAYMOGENIZER DECAL KIT
5	102339	1	DANGER, ROT. AUGERS	*17	A7453	1	190 DECAL KIT
6	102070	1	OIL BATH MAINTENANCE	*18	A7454	1	240 DECAL KIT
7	101606	1	REAR DOOR DECAL	*19	A7455	1	290 DECAL KIT
8	102358	1	DANGER, DRIVE LINE	20	102372	2	STATIONARY DECAL

Note: *16 Kit Includes Items 13, 14, 15.

*17-19 Kits include all necessary decals except HAYMOGENIZER decals for that mixer.

LINERS



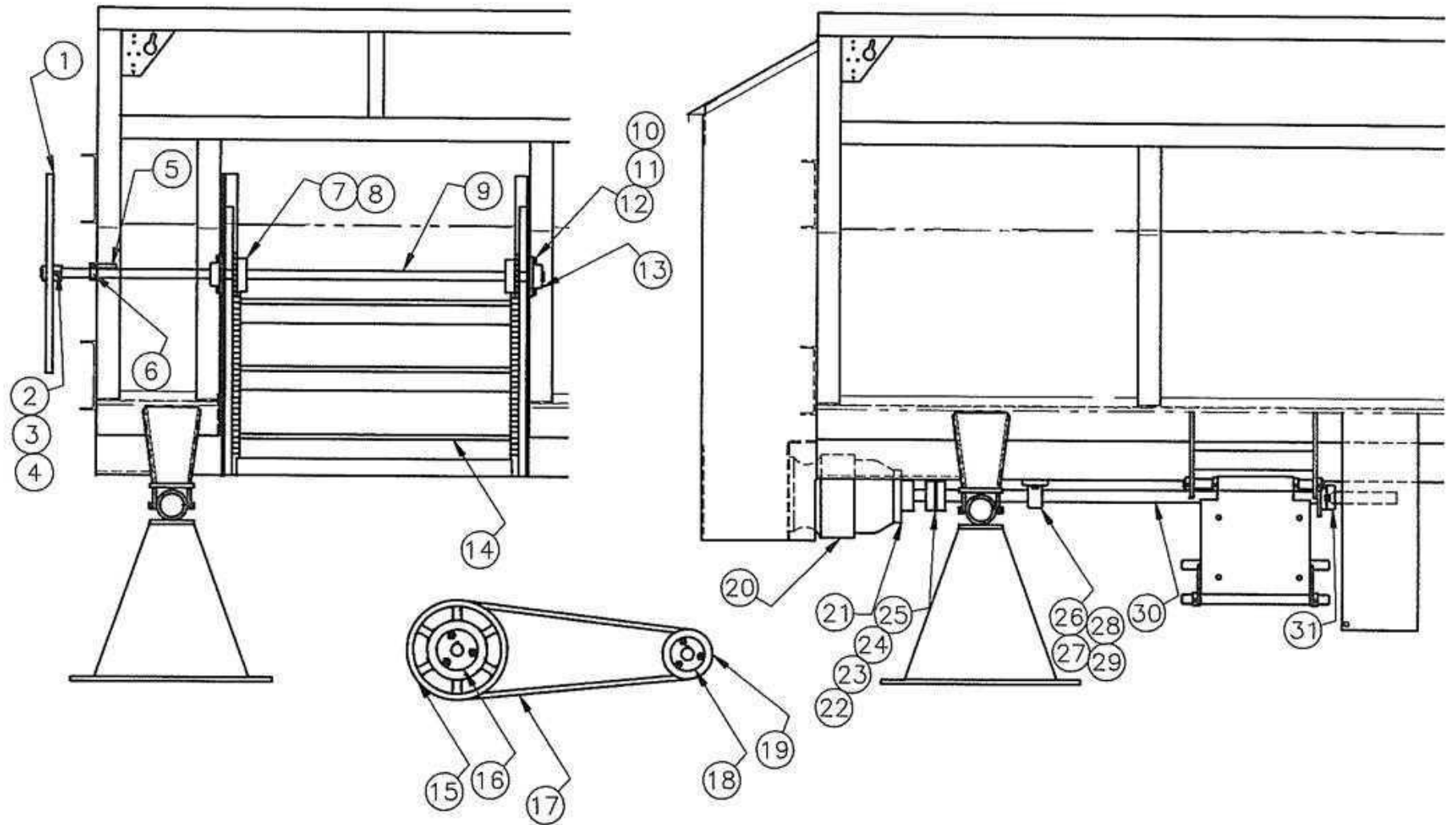
PARTS LIST LINERS

ITEM	PART #	QTY	DESCRIPTION	ITEM	PART #	QTY	DESCRIPTION
1	9499	2	END LINER SS	3	9511	2	BOTTOM SS 290
1	9500	2	END LINER MILD	3	9512	2	BOTTOM MILD 290
2	9501	2	SIDE LINER SS 190	*4	9513	3	DIS. LINER 32" SS
2	9502	2	SIDE LINER MILD 190	*4	9477	3	DIS. LINER 32" MILD
2	9503	2	SIDE LINER SS 240	*4	9514	3	DIS. LINER 44" SS
2	9504	2	SIDE LINER MILD 240	*4	9478	3	DIS. LINER 44" MILD
2	9505	2	SIDE LINER SS 290	5	9515	4	END LINER BOTTOM SS
2	9506	2	SIDE LINER MILD 290	5	9516	4	END LINER BOTTOM MILD
3	9507	2	BOTTOM SS 190	6	9517	2	END LINER MID SS
3	9508	2	BOTTOM MILD 190	6	9518	2	END LINER MID MILD
3	9509	2	BOTTOM SS 240	7	9519	2	END LINER TOP SS
3	9510	2	BOTTOM MILD 240	7	9520	2	END LINER TOP MILD

Note: AR - As Required

*4 - When ordering a new discharge, auger, auger flighting, bottom, or liner measure length.
Measurements are taken from under any auger from the back plate to the end (where chute begins).

STATIONARY PARTS



PARTS LIST STATIONARY PARTS

ITEM	PART #	QTY	DESCRIPTION	ITEM	PART #	QTY	DESCRIPTION
1	A15721	1	WHEEL ASSEMBLY	18	102001	1	BUSHING, 1 1/8 I.D. 190, 240
2	100380	1	SCREW	18	102000	1	BUSHING, 1 3/8 I.D. 190, 240
3	100271	1	WASHER, LOCK	18	102378	1	BUSHING, 1 3/8 I.D. 290
4	100254	1	NUT	18	102374	1	BUSHING, 1 5/8 I.D. 290
5	15745	1	HANDLE, DOOR LOCK	19	101997	1	SHEAVE, 190, 240
6	A15742	1	DOOR LOCK ASS'Y	19	102373	1	SHEAVE, 290
7	100092	2	SPROCKET	20	102101	1	PLANETARY REDUCER 21:1
8	34990	2	KEY	21	A15707	1	INPUT ADAPTER ASS'Y
9	15740	1	SHAFT, DOOR OPENER	22	10983	2	KEY
10	101996	4	SCREW	23	101994	2	CHAIN COUPLING HALF
11	100271	4	WASHER, LOCK	24	101875	1	CHAIN FOR COUPLING
12	100254	4	NUT	25	101876	1	COVER
13	101442	2	BEARING	26	100055	1	BEARING, PILLOW BLOCK
14	A15739	1	DOOR ASS'Y	27	101444	2	SCREW
15	101998	1	SHEAVE, 190, 240	28	100272	2	WASHER, LOCK
15	102376	1	SHEAVE, 290	29	300826	2	NUT
16	102002	1	BUSHING, 190, 240	30	15737	1	SHAFT, DRIVE 190, 240
16	102377	1	BUSHING, 290	30	15770	1	SHAFT, DRIVE 290
17	101999	3	BELT, V 190, 240	31	302072C	1	BEARING, TWO BOLT
17	102375	5	BELT, V 290				