



MOBILE MIXERS

PARTS MANUAL

405 - 470 - 540

HIGH ROUGHAGE, STATIONARY,
TRUCK & TRAILER MODELS

Serial number up to _____

Harsh International, Inc.
600 Oak Ave.
Eaton, CO 80615-0007
(970) 454-2291
Fax: (970) 454-3491

Price: \$2.50

Parts book number: **102878**

PARTS ORDERING INFORMATION

To assure continued safe and efficient operation and to maintain the validity of your warranty use only genuine Harsh replacement parts. To obtain the correct parts for your mixer contact the nearest Harsh equipment dealer in your area. If no Harsh dealer is available, contact Harsh International Inc., 600 Oak Avenue, Eaton, CO 80615, (970) 454-1755.

When ordering parts, be sure to know the Model and Serial numbers of the machine. For the quickest service when ordering by phone, be prepared to state the part number and description as well as the Parts Manual part number, the page number and item number of the part(s) you are ordering.

Always have repairs performed by qualified Service Personnel from your Harsh dealer.

All information, illustrations and specifications contained in this manual are based on the latest product information available at the time of printing.

Harsh International, Inc. reserves the right to make changes to manuals, parts or assemblies at any time without prior notice.

REPLACEMENT MANUALS

Replacement or extra Operator's Manuals and Parts Manuals are available from Harsh or contact your local dealer.

All Operator's Manuals and Parts Manuals are ordered by Model number and Serial number of **your** unit.

There is a nominal cost for each manual ordered.

!!!! IMPORTANT !!!!

Before attempting to operate, inspect, adjust, repair or replace any part of your machine be sure to be thoroughly familiar with your Operator's Manual and observe all safety notices; both printed in the manual and on decals located on the machine.

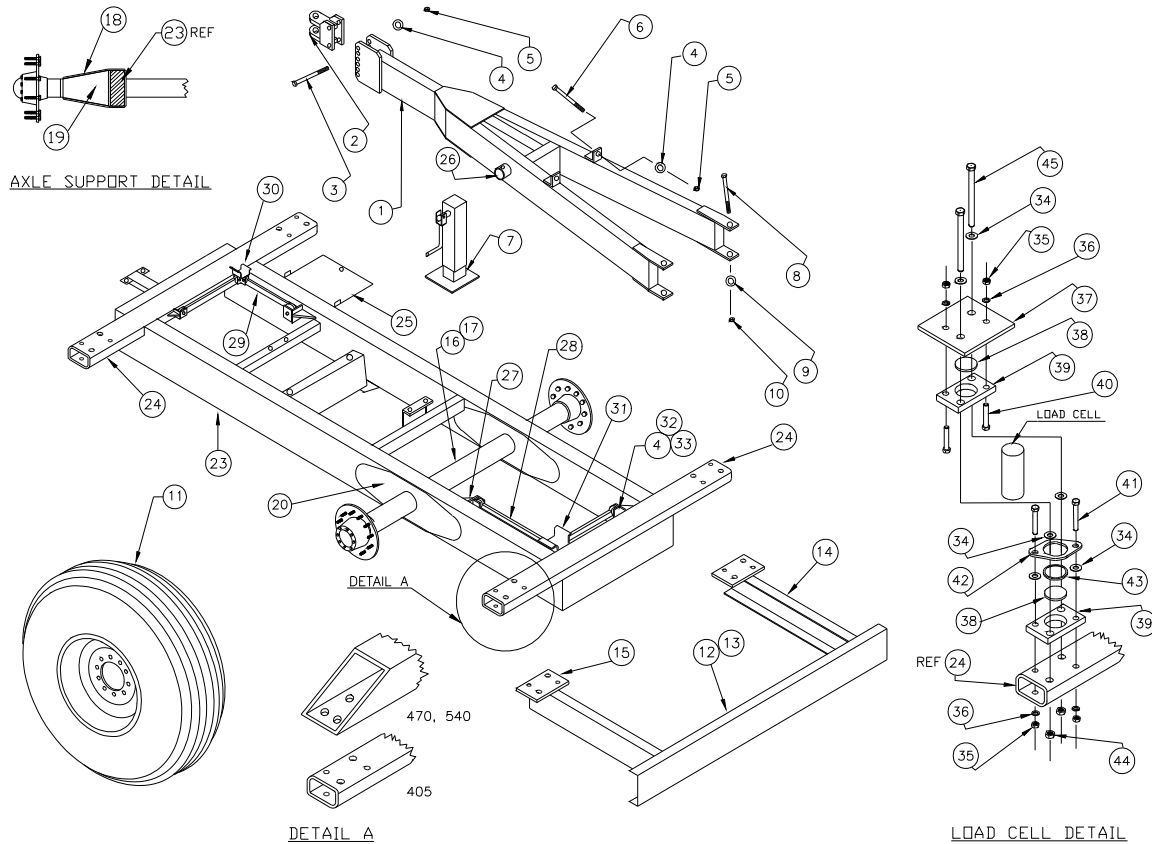
**FAILURE TO OBSERVE THESE SAFETY RULES COULD RESULT IN
SERIOUS INJURY AND/OR PROPERTY DAMAGE!**

INDEX

GROUPS	PAGE NO.
AUGER ASSEMBLY	24,25
DISCHARGE	30-39
DISCHARGE DOOR CYLINDER	46
DRIVE LINE, TRAILER	18,19
DRIVE LINE, TRUCK	20-23
DROP CHUTE CYLINDER	47
ELECTRICAL SWITCHES	48
GTD	16
HYDRAULIC COMPONENTS	43
LIGHTS	49
LINERS	40,41
MIXER DECALS	50,51
REAR DRIVE ASSEMBLY	26-28
REAR OIL BATH AND DOORS	53
SUB FRAME, TRUCK	12,14-15
SWING ARM	52
TRAILER AXLE	7
TRAILER FRAME	4,6,8-11
TRAILER HYDRAULICS	42
TRUCK HYDRAULICS	44,45
TUB GUARD	54

TRAILER FRAME

LOWERED TRAILER



TRAILER FRAME

ITEM PART # QTY DESCRIPTION

1	A17350	1	TONGUE
2	A16606	1	HITCH
3	101434	2	SCREW 6"
4	100554	12	LOCK WASHER
5	100658	4	NUT
6	100580	2	SCREW
7	102349	1	JACK
8	101878	2	SCREW
9	101879	2	LOCK WASHER
10	100355	2	NUT
*11	102588	2	TIRE, COMPLETE W/TUBE & RIM
*11	102583	2	TIRE, AIRPLANE COMP W/TUBE & RIM
12	A17352	1	BUMPER ASSY
13	15429	1	CHANNEL, FORMED BUMPER
14	17353	2	CHANNEL, BUMPER EXTENSION
15	17775	2	MOUNT PLATE
16	102873	1	AXLE
17	17347	1	AXLE REINFORCING TUBE
18	18384	4	FORMED AXLE SUPPORT
19	18383	4	AXLE SUPPORT PLATE
20	17470	4	FRAME REINFORCING PLATE
21	17471	2	CHANNEL, 27" AXLE CASE
22	17346	4	CHANNEL, 13 3/4" AXLE CASE

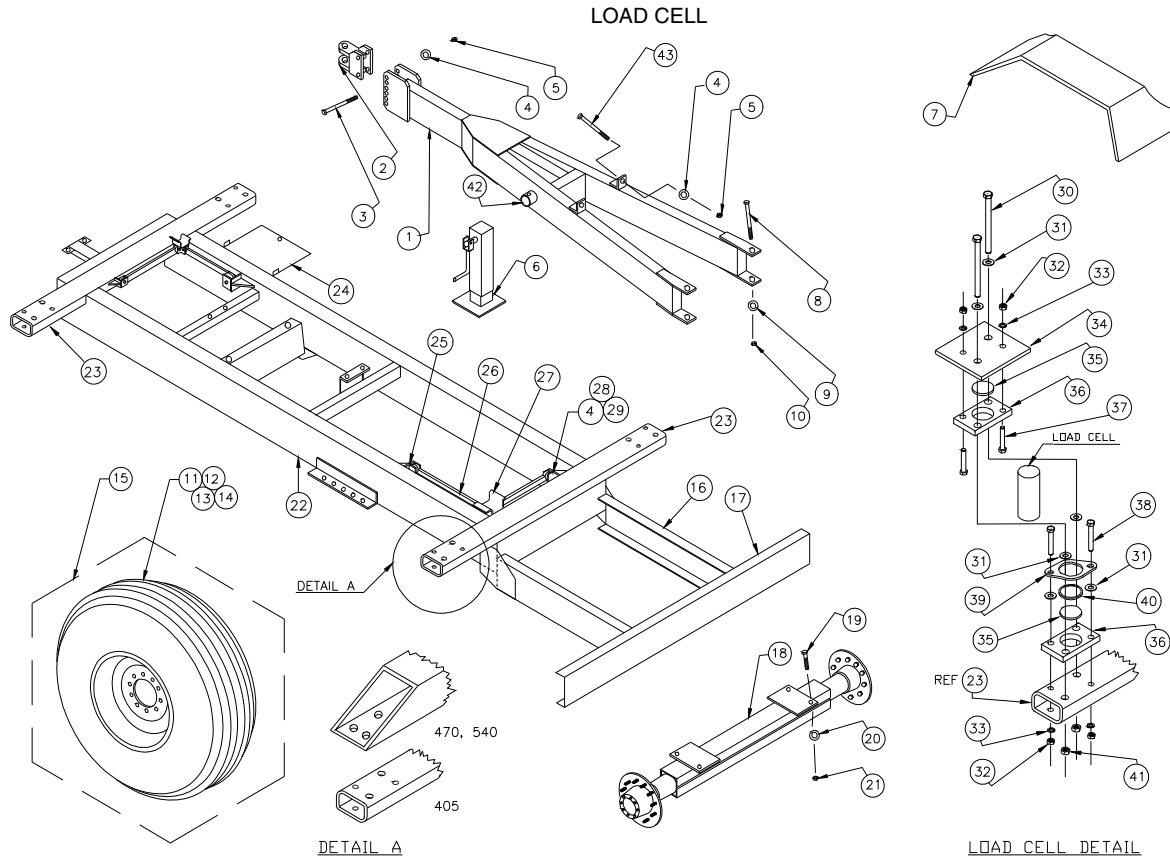
ITEM PART # QTY DESCRIPTION

23	~	1	FRAME ASSY (SPECIAL ORDER ONLY)
24	~	2	CROSS TUBE (SPECIAL ORDER ONLY)
25	16547	1	BATTERY TRAY
26	NSS	1	TUBE, JACK MOUNT
27	15059	4	STABILIZER MOUNT ASSY
28	11879	2	STABILIZER BAR
29	18562	2	STABILIZER BAR
30	17584	1	TUB MOUNT
31	18470	1	TUB MOUNT
32	101413	8	SCREW
33	100252	8	NUT
34	100663	24	FLAT WASHER
35	100248	16	NUT
36	100273	16	LOCK WASHER
37	18880	4	PEDESTAL BASE PLATE
38	102220	8	URETHANE SHOCK DISK
39	14898	8	SCALE PLATE, LOAD CELL
40	102249	8	SCREW
*41	102899	8	SCREW
42	16109	4	LOAD CELL LOCK RING
43	100156	4	O-RING
44	101009	8	NUT
*45	102900	8	SCREW

NOTE: FOR UNITS WITH SERIAL NUMBERS ABOVE (405HB7000, 470HB7000, 540HB7000), PLEASE REFER TO PAGE 8-9.

- *11 - ENSURE CORRECT SIZE BEFORE ORDERING.
- *41 - 405 USE P/N 102899. 470, 540 USE P/N 102249.
- *45 - 405 USE P/N 102900. 470, 540 USE P/N 100580.
- NSS - NOT SOLD SEPARATELY
- 21, 22 - NOT SHOWN

TRAILER FRAME



TRAILER FRAME

ITEM PART # QTY DESCRIPTION

1	A16605	1	TONGUE
2	A16606	1	HITCH
3	101434	4	SCREW 6"
4	100554	12	LOCK WASHER
5	100658	4	NUT
6	102349	1	JACK
7	17354	2	FENDER, TUB MOUNT SINGLE AXLE
7	17715	2	FENDER, TUB MOUNT TANDEM AXLE
8	101878	2	SCREW
9	101879	2	LOCK WASHER
10	100355	2	NUT
*11	100666	2	TIRE, 16.5 x 22.5
*11	102590	2	TIRE, 44 x 16 AIRPLANE
*12	102261	2	TUBE, 15 x 22.5
*12	102591	2	TUBE, 44 x 16 AIRPLANE
*13	102363	2	RIM, 13.5 x 22.5 W/10 HOLES
*13	102592	2	RIM, 18 x 15 W/10 HOLES, AIRPLANE
14	102600	2	FLAP, AIRPLANE TIRE 18 x 12
*15	102588	2	TIRE, COMPLETE W/TUBE & RIM
*15	102583	2	TIRE, AIRPLANE COMP W/TUBE & RIM
16	16156	2	BUMPER EXTENSION 405
16	17353	2	BUMPER EXTENSION 470, 540
17	15429	1	BUMPER, REAR
18	A15146	1	AXLE
19	100322	4	SCREW

ITEM PART # QTY DESCRIPTION

20	100361	4	LOCK WASHER
21	100744	4	NUT
22	~	1	FRAME ASSY (SPECIAL ORDER ONLY)
23	~	1	CROSS TUBE (SPECIAL ORDER ONLY)
24	A16547	1	BATTERY TRAY
25	15059	4	MOUNT, STABILIZER TO FRAME
26	A11879	4	STABILIZER BAR
27	17584	2	MOUNT, STABILIZER TO TUB
28	101413	8	SCREW
29	100252	8	NUT
*30	102900	8	SCREW
31	100663	24	FLAT WASHER
32	100248	16	NUT
33	100273	16	LOCK WASHER
34	18485	4	PEDESTAL BASE PLATE
35	102220	8	URETHANE SHOCK DISK
36	14898	8	CAGE PLATE, LOAD CELL
37	102249	8	SCREW
*38	102899	8	SCREW
39	16109	4	LOAD CELL LOCK RING
40	100156	4	O-RING
41	101009	8	NUT
42	NSS	1	TUBE, JACK MOUNT
43	101434	2	SCREW (405)
43	100580	2	SCREW (470, 540)

NOTE: FOR UNITS WITH SERIAL NUMBERS ABOVE (405HB7000, 470HB7000, 540HB7000), PLEASE REFER TO PAGE 10-11.

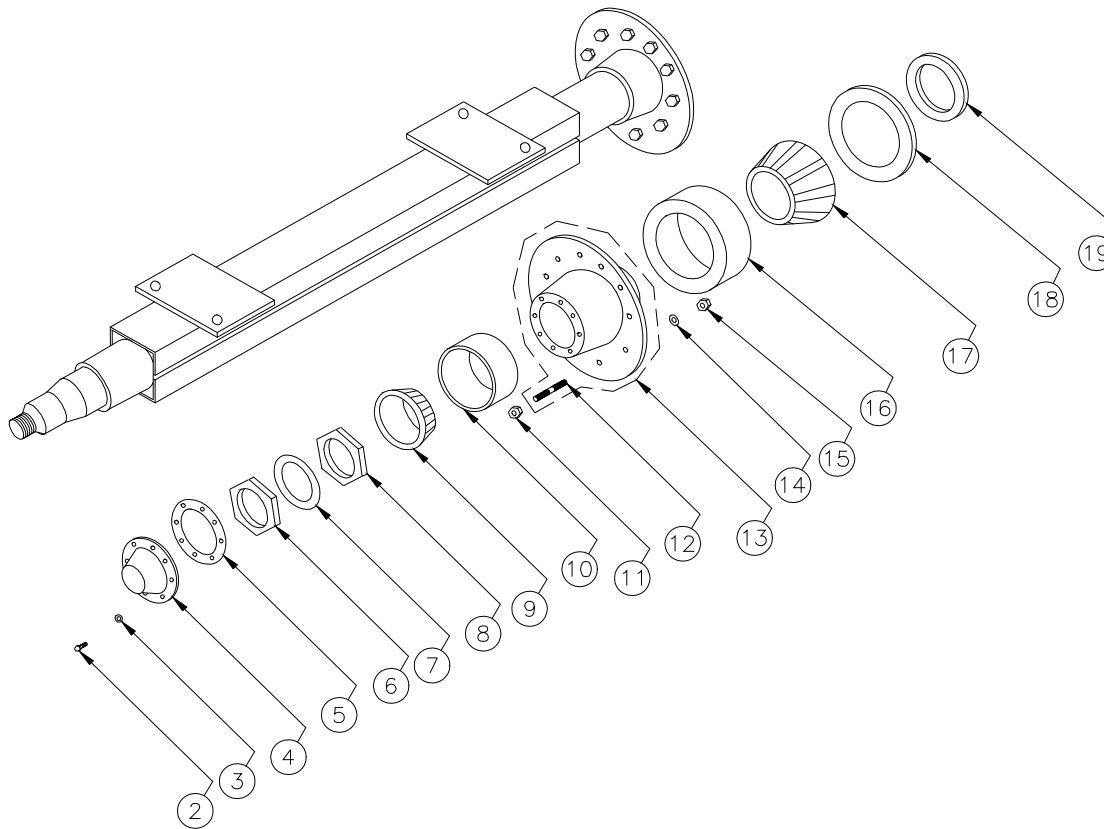
*11, *12, *13, *15 - ENSURE CORRECT SIZE BEFORE ORDERING.

*30 - 405 USE P/N 102900. 470, 540 USE P/N 100580.

*38 - 405 USE P/N 102899. 470, 540 USE P/N 102249.

NSS - NOT SOLD SEPARATELY

TRAILER AXLE



TRAILER AXLE

ITEM PART # QTY DESCRIPTION

**	A15146	1	AXLE, ASSEMBLY
2	102272	12	SCREW
3	102904	12	LOCK WASHER
4	102270	2	HUB CAP
5	102271	2	HUB GASKET
6	102268	2	SPINDLE NUT OUTSIDE
7	102269	2	SPINDLE WASHER
8	102267	2	SPINDLE NUT INSIDE
9	102265	2	BEARING CONE OUTSIDE
10	102266	2	BEARING CUP OUTSIDE
11	102276	10	WHEEL NUT LEFT HAND THREAD

ITEM PART # QTY DESCRIPTION

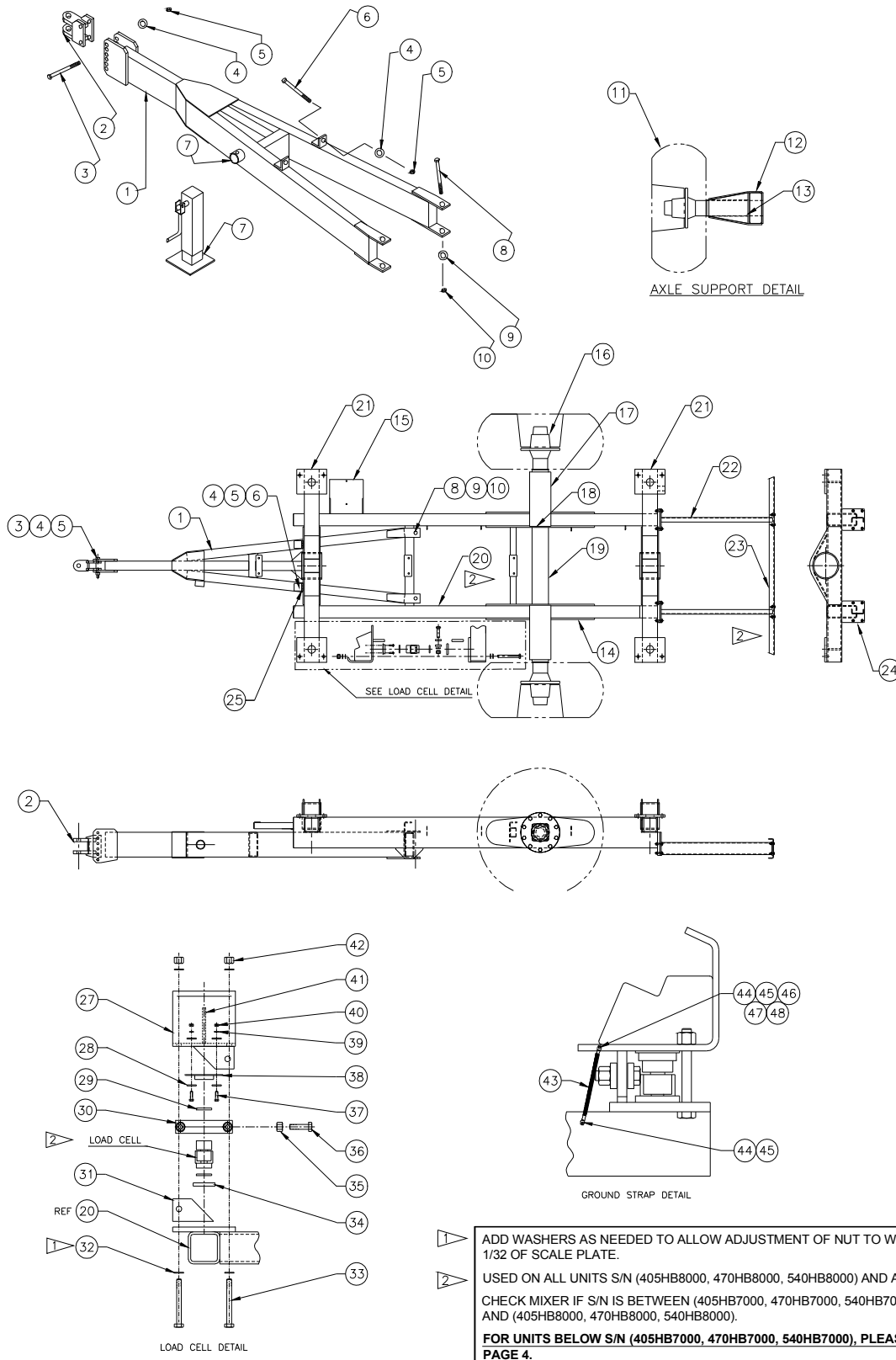
11	102275	10	WHEEL NUT RH THREAD
12	102274	10	WHEEL STUD LH THREAD
12	102273	10	WHEEL STUD RH THREAD
*13	102279	1	HUB LEFT SIDE
*13	102280	1	HUB RIGHT SIDE
14	102278	20	LOCK WASHER
15	102277	20	NUT
16	102264	2	BEARING CUP INSIDE
17	102263	2	BEARING CONE INSIDE
18	102262	2	SEAL, W/SEAL RING
19	NSS	2	SEAL RING

NOTE: *13 INCLUDES 10, 12, 14, 15, 16.

** USED ON ALL TRAILERS EXCEPT THE LOWERED FRAME MODEL; SEE PAGE 4, ITEM 16 OR PAGE 9, ITEM 16.
 LEFT SIDE HUB USES LEFT HAND THREADS AND RIGHT SIDE HUB USES RIGHT HAND THREADS.
 NSS - NOT SOLD SEPARATELY

TRAILER FRAME

LOWERED TRAILER



▲ ADD WASHERS AS NEEDED TO ALLOW ADJUSTMENT OF NUT TO WITHIN 1/32 OF SCALE PLATE.
 ▲ USED ON ALL UNITS S/N (405HB8000, 470HB8000, 540HB8000) AND ABOVE.
 CHECK MIXER IF S/N IS BETWEEN (405HB7000, 470HB7000, 540HB7000) AND (405HB8000, 470HB8000, 540HB8000).
FOR UNITS BELOW S/N (405HB7000, 470HB7000, 540HB7000), PLEASE SEE PAGE 4.

TRAILER FRAME

LOWERED TRAILER

ITEM	PART #	QTY	DESCRIPTION	ITEM	PART #	QTY	DESCRIPTION
1	A17350	1	TONGUE	24	18944	2	BOLT-ON BUMPER MOUNT
2	A16606	1	HITCH	25	15099	2	ANGLE, TONGUE MOUNT
3	101434	2	SCREW 6"	27	A18931	4	LOAD CELL BRACKET
4	100554	4	LOCK WASHER	28	100300	32	FLAT WASHER
5	100658	4	NUT	29	102220	8	URETHANE SHOCK DISK
6	100580	2	SCREW 8"	30	18855	8	STABILIZER BAR
7	102349	1	JACK	31	18847	4	STABILIZER PLATE
*7	NSS	1	JACK MOUNT TUBE	32	100556	16	FLAT WASHER
8	101878	2	SCREW	33	101877	8	SCREW
9	101879	2	LOCK WASHER	34	18858	4	LOAD CELL LOCK
10	100355	2	NUT	35	NPN	8	LOCK NUT
*11	102588	2	TIRE, COMPLETE W/TUBE & RIM	36	100367	8	SCREW
*11	102583	2	TIRE, AIRPLANE COMP W/TUBE & RIM	37	100240	16	SCREW
12	18382	4	FORMED AXLE SUPPORT	38	A18870	4	LOAD CELL KEEPER
13	18381	4	AXLE SUPPORT PLATE	39	100271	16	LOCK WASHER
14	17344	4	REINFORCING PLATE	40	100254	16	NUT
15	A16547	1	BATTERY TRAY	41	18935	4	LOAD CELL GUSSET
16	102873	1	AXLE	42	101009	8	LOCK NUT
17	17346	4	FORMED AXLE CHANNEL 13 3/4"	43	A16362	1	GROUNDING STRAP
18	17347	1	REINFORCING AXLE TUBE	44	100323	2	SCREW
19	17345	2	FORMED AXLE CHANNEL 25"	45	100304	2	LOCK WASHER
20	~	1	FRAME ASSY (SPECIAL ORDER ONLY)	46	100221	1	NUT
21	~	2	CROSS TUBE (SPECIAL ORDER ONLY)	47	NPN	1	STAR WASHER
22	19018	2	BUMPER EXTENSION	48	100443	1	FLAT WASHER
23	18940	1	BUMPER, REAR				

NOTE: *7 - WELD ON MOUNT SUPPLIED WITH JACK.

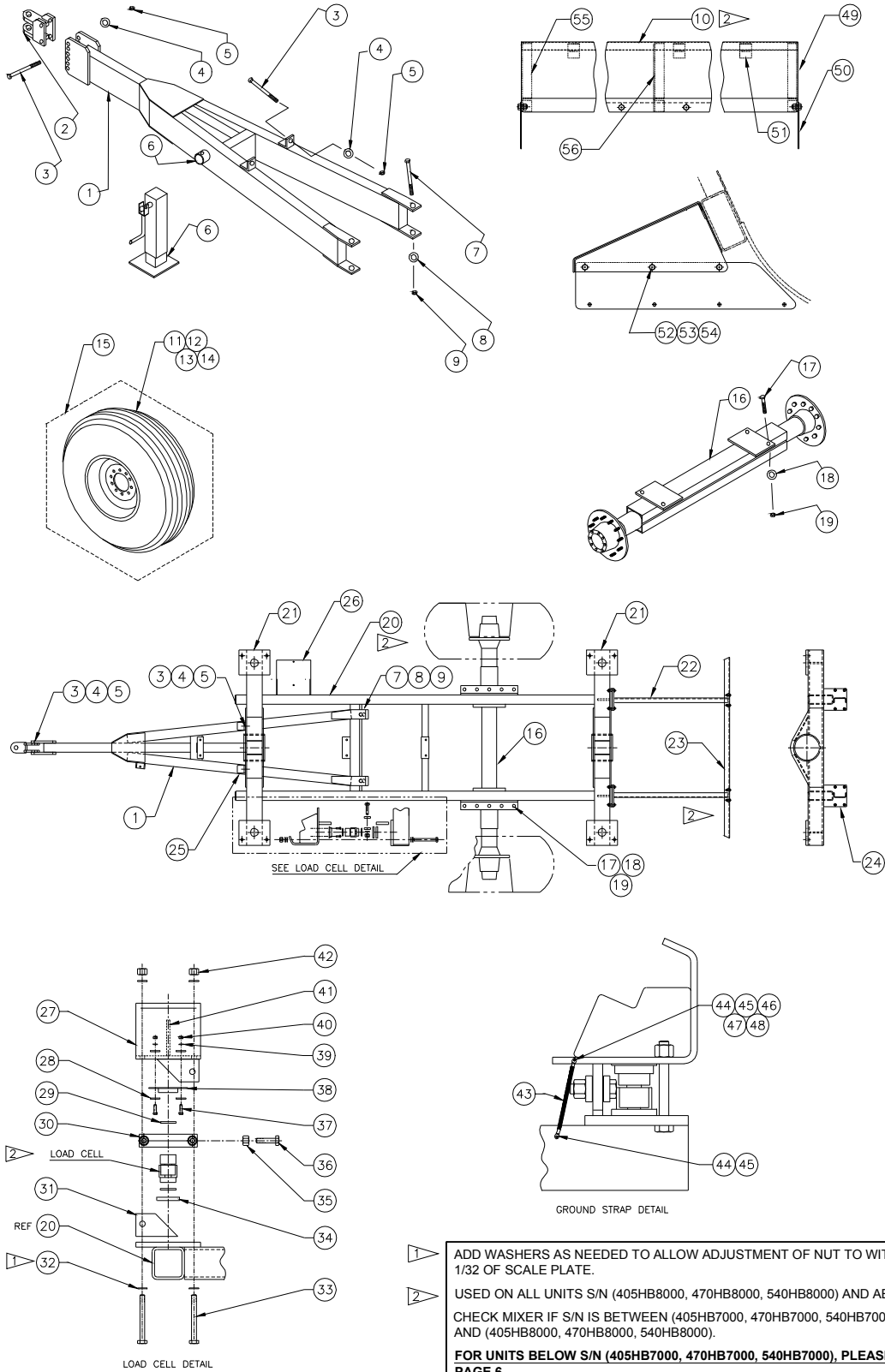
*11 - ENSURE CORRECT SIZE BEFORE ORDERING.

NPN - NO PART NUMBER

NSS - NOT SOLD SEPARATELY

TRAILER FRAME

LOAD CELL



1 ADD WASHERS AS NEEDED TO ALLOW ADJUSTMENT OF NUT TO WITHIN 1/32 OF SCALE PLATE.
 2 USED ON ALL UNITS S/N (405HB8000, 470HB8000, 540HB8000) AND ABOVE. CHECK MIXER IF S/N IS BETWEEN (405HB7000, 470HB7000, 540HB7000) AND (405HB8000, 470HB8000, 540HB8000).
FOR UNITS BELOW S/N (405HB7000, 470HB7000, 540HB7000), PLEASE SEE PAGE 6.

TRAILER FRAME

LOAD CELL

ITEM	PART #	QTY	DESCRIPTION	ITEM	PART #	QTY	DESCRIPTION
1	A16605	1	TONGUE	29	102220	8	URETHANE SHOCK DISK
2	A16606	1	HITCH	30	18855	8	STABILIZER BAR
3	101434	4	SCREW 6"	31	18847	4	STABILIZER PLATE
4	100554	4	LOCK WASHER	32	100556	16	FLAT WASHER
5	100658	4	NUT	33	101877	8	SCREW
6	102349	1	JACK	34	18858	4	LOAD CELL LOCK
*6	NSS	1	JACK MOUNT TUBE	35	NPN	8	LOCK NUT
7	101878	2	SCREW	36	100367	8	SCREW
8	101879	2	LOCK WASHER	37	100240	16	SCREW
9	100355	2	NUT	38	A18870	4	LOAD CELL KEEPER
*10	NPN	2	SLOPED FENDER	39	100271	16	LOCK WASHER
*11	100666	2	TIRE, 16.5 x 22.5	40	100254	16	NUT
*11	102590	2	TIRE, 44 x 16 AIRPLANE	41	18935	4	LOAD CELL GUSSET
*12	102261	2	TUBE, 15 x 22.5	42	101009	8	LOCK NUT
*12	102591	2	TUBE, 44 x 16 AIRPLANE	43	A16362	1	GROUNDING STRAP
*13	102363	2	RIM, 13.5 x 22.5 W/10 HOLES	44	100323	2	SCREW
*13	102592	2	RIM, 18 x 15 W/10 HOLES, AIRPLANE	45	100304	2	LOCK WASHER
14	102600	2	FLAP, AIRPLANE TIRE 18 x 12	46	100221	1	NUT
*15	102588	2	TIRE, COMPLETE W/TUBE & RIM	47	NPN	1	STAR WASHER
*15	102583	2	TIRE, AIRPLANE COMP W/TUBE & RIM	48	100443	1	FLAT WASHER
16	A15146	1	AXLE	*49	18932	2	FENDER CLOSURE (RIGHT)
17	100322	4	SCREW	*49	19022	2	FENDER CLOSURE (RIGHT)
18	100361	4	LOCK WASHER	*50	18900	4	SHEET, MUD FLAP EXTENSION
19	100744	4	NUT	*50	19024	4	SHEET, MUD FLAP EXTENSION
20	~	1	FRAME ASSY (SPECIAL ORDER ONLY)	51	18902	6	FENDER KEEPER
21	~	2	CROSS TUBE (SPECIAL ORDER ONLY)	52	100276	12	SCREW
22	19018	2	BUMPER EXTENSION	53	100271	12	WASHER
23	18940	1	BUMPER, REAR	54	100254	12	NUT
24	18944	2	BOLT-ON BUMPER MOUNT	*55	18933	2	FENDER CLOSURE (LEFT)
25	15099	2	ANGLE, TONGUE MOUNT	*55	19023	2	FENDER CLOSURE (LEFT)
26	A16547	1	BATTERY TRAY	*56	18933	2	FENDER CLOSURE (LEFT) - optional
27	A18931	4	LOAD CELL BRACKET	*56	19023	2	FENDER CLOSURE (LEFT) - optional
28	100300	32	FLAT WASHER				

NOTE: *6 - WELD ON MOUNT SUPPLIED WITH JACK.

*10 - SPECIFY LENGTH WHEN ORDERING.

*11, *12, *13, *15 - ENSURE CORRECT SIZE BEFORE ORDERING.

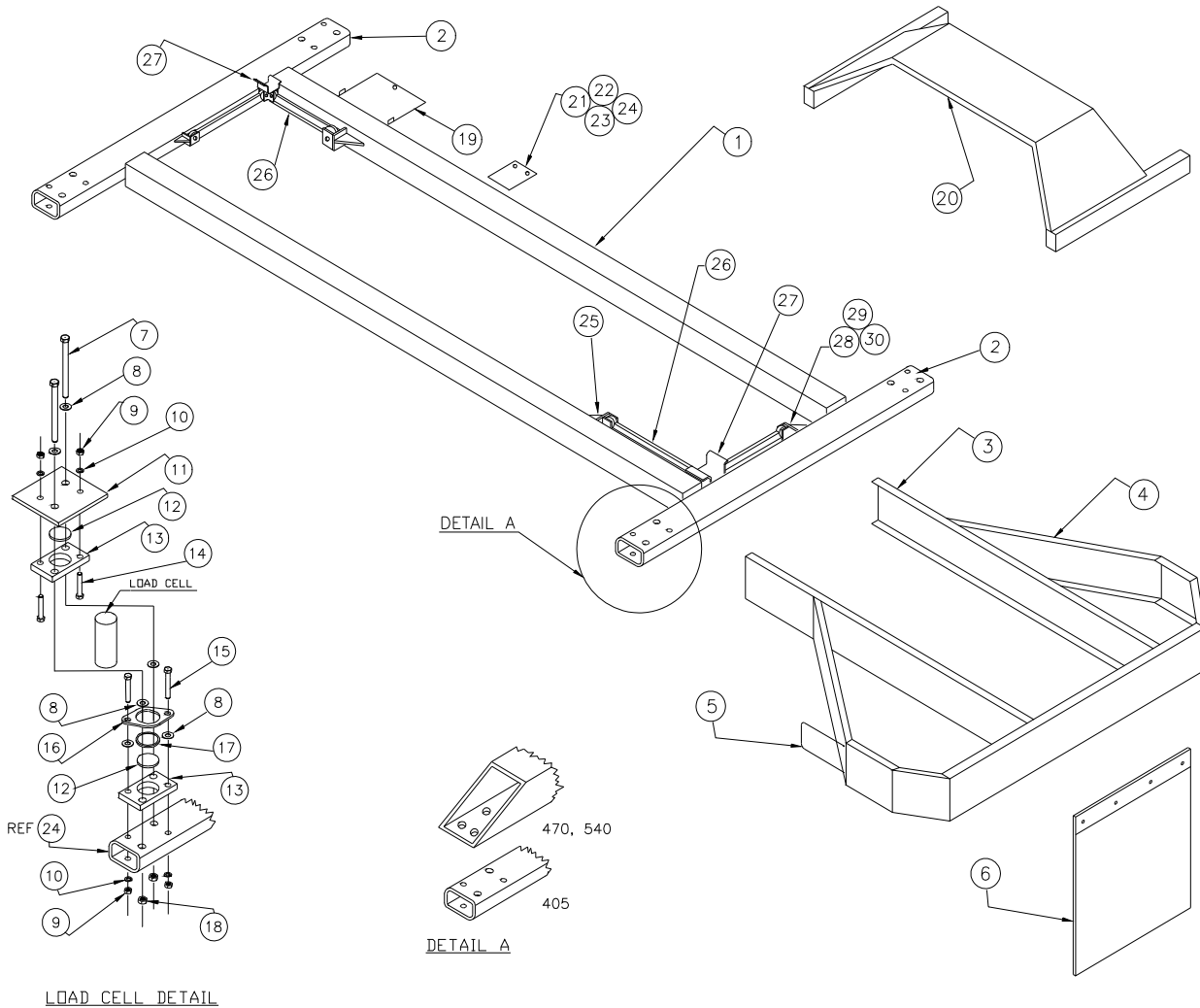
*49, *50, *55, *56 - SPECIFY FENDER WIDTH.

*49, *55 - CHECK MIXER. END CLOSURES ARE NOT REQUIRED FOR MOST UNITS ABOVE S/N (405HC0000, 470HC0000, 540HC0000), ITEM *56 REMAINS OPTIONAL AS A CENTER SUPPORT - SPECIFY FENDER WIDTH WHEN ORDERING.

NPN - NO PART NUMBER

NSS - NOT SOLD SEPARATELY

SUB FRAME TRUCK



SUB FRAME TRUCK

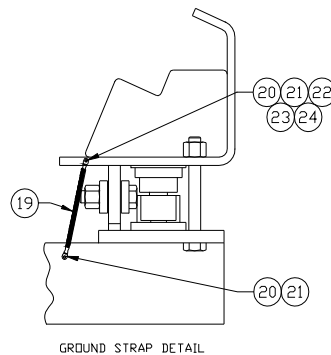
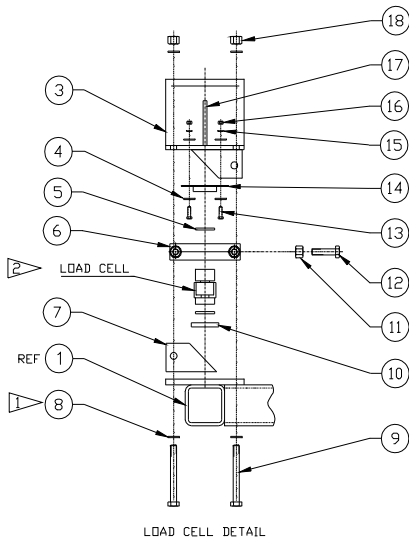
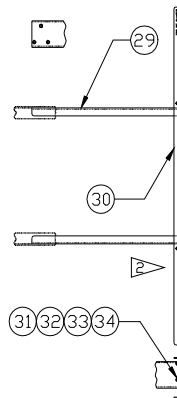
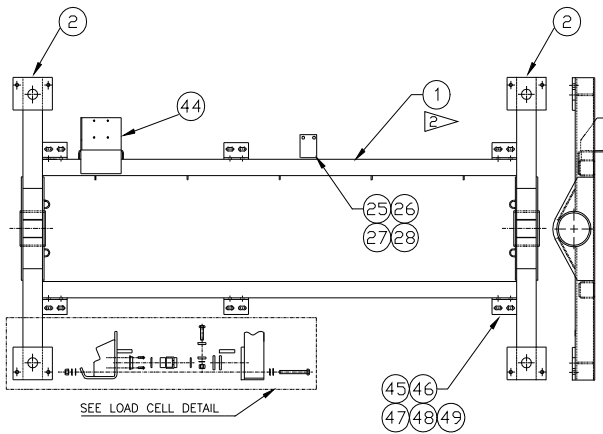
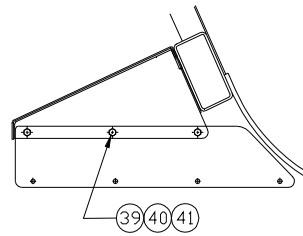
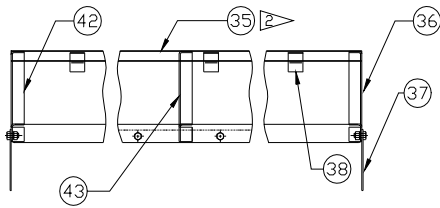
ITEM	PART #	QTY	DESCRIPTION	ITEM	PART #	QTY	DESCRIPTION
1	~	1	SUB FRAME (SPECIAL ORDER ONLY)	16	16109	4	LOAD CELL LOCK RING
2	~	2	CROSS TUBE (SPECIAL ORDER ONLY)	17	100156	4	O-RING
3	15063	2	CHANNEL, BUMPER EXTENSION	18	101009	8	NUT
4	A16259	1	BUMPER ASSEMBLY	19	A16547	1	BATTERY TRAY
5	16353	1	STEP	20	A14935	2	FENDER, STANDARD
6	100312	2	MUD FLAPS	21	15629	6	STRAP, SUB FRAME MOUNT
*7	102900	8	SCREW	22	300826	12	NUT
8	100663	24	FLAT WASHER	23	100272	12	LOCK WASHER
9	100248	16	NUT	24	300904	12	SCREW
10	100273	16	LOCK WASHER	25	15059	4	STABILIZER MOUNT ASSY
11	16001	4	PEDESTAL BASE PLATE	26	11879	4	STABILIZER BAR
12	102220	8	URETHANE SHOCK DISK	27	18470	2	TUB MOUNT
13	14898	8	CAGE PLATE, LOAD CELL	28	101413	8	SCREW
14	102249	8	SCREW	29	100554	8	LOCK WASHER
*15	102899	8	SCREW	30	100252	8	NUT

NOTE: FOR UNITS WITH SERIAL NUMBERS ABOVE (405HB7000, 470HB7000, 540HB7000), PLEASE REFER TO PAGE 14-15.

*7 - 405 USE P/N 102900. 470, 540 USE P/N 100580.
 *15 - 405 USE P/N 102899. 470, 540 USE P/N 102249.

SUB FRAME TRUCK

LOAD CELL



1 ADD WASHERS AS NEEDED TO ALLOW ADJUSTMENT OF NUT TO WITHIN 1/32 OF SCALE PLATE.

2 USED ON ALL UNITS S/N (405HB8000, 470HB8000, 540HB8000) AND ABOVE.

CHECK MIXER IF S/N IS BETWEEN (405HB7000, 470HB7000, 540HB7000) AND (405HB8000, 470HB8000, 540HB8000).

FOR UNITS BELOW S/N (405HB7000, 470HB7000, 540HB7000), PLEASE SEE PAGE 12.

SUB FRAME TRUCK

LOAD CELL

ITEM	PART #	QTY	DESCRIPTION	ITEM	PART #	QTY	DESCRIPTION
1	~	1	SUB FRAME (SPECIAL ORDER ONLY)	*28	300904	12	SCREW
2	~	2	CROSS TUBE (SPECIAL ORDER ONLY)	29	A18973	2	BUMPER EXTENSION
3	A18931	4	LOAD CELL BRACKET	30	18972	1	BUMPER, TRUCK
4	100300	32	FLAT WASHER	31	101444	10	SCREW
5	102220	8	URETHANE SHOCK DISK	32	100338	10	FLAT WASHER
6	18855	8	STABILIZER BAR	33	100272	10	LOCK WASHER
7	18847	4	STABILIZER PLATE	34	300826	10	NUT
8	100556	16	FLAT WASHER	*35	NPN	2	SLOPED FENDER
9	101877	8	SCREW	*36	18932	2	FENDER CLOSURE (RIGHT)
10	18858	4	LOAD CELL LOCK	*36	19022	2	FENDER CLOSURE (RIGHT)
11	NPN	8	LOCK NUT	*37	18900	4	SHEET, MUD FLAP EXTENSION
12	100367	8	SCREW	*37	19024	4	SHEET, MUD FLAP EXTENSION
13	100240	16	SCREW	38	18902	6	FENDER KEEPER
14	A18870	4	LOAD CELL KEEPER	39	100276	12	SCREW
15	100271	16	LOCK WASHER	40	100271	12	WASHER
16	100254	16	NUT	41	100254	12	NUT
17	18935	4	LOAD CELL GUSSET	*42	18933	2	FENDER CLOSURE (LEFT)
18	101009	8	LOCK NUT	*42	19023	2	FENDER CLOSURE (LEFT)
19	A16362	1	GROUNDING STRAP	*43	18933	2	FENDER CLOSURE (LEFT) - optional
20	100323	2	SCREW	*43	19023	2	FENDER CLOSURE (LEFT) - optional
21	100304	2	LOCK WASHER	44	A18267	1	HYD. PUMP MNT. ASSY - optional
22	100221	1	NUT	*45	19207	12	SIDE MOUNT PLATE
23	NPN	1	STAR WASHER	*46	100824	12	SCREW
24	100443	1	FLAT WASHER	*47	100556	24	FLAT WASHER
*25	15629	6	STRAP, SUB-FRAME MOUNT	*48	100554	12	LOCK WASHER
*26	300826	12	NUT	*49	100252	12	NUT
*27	100272	12	LOCKWASHER				

NOTE: *25, *26, *27, *28 - USED ON UNITS UP TO S/N (405HC0000, 470HC0000, 540HC0000). CHECK MIXER IF S/N IS BETWEEN (405HC0000, 470HC0000, 540HC0000) AND (405HC1000, 470HC1000, 540HC1000); SEE ITEMS *45-*49.

*35 - SPECIFY LENGTH WHEN ORDERING.

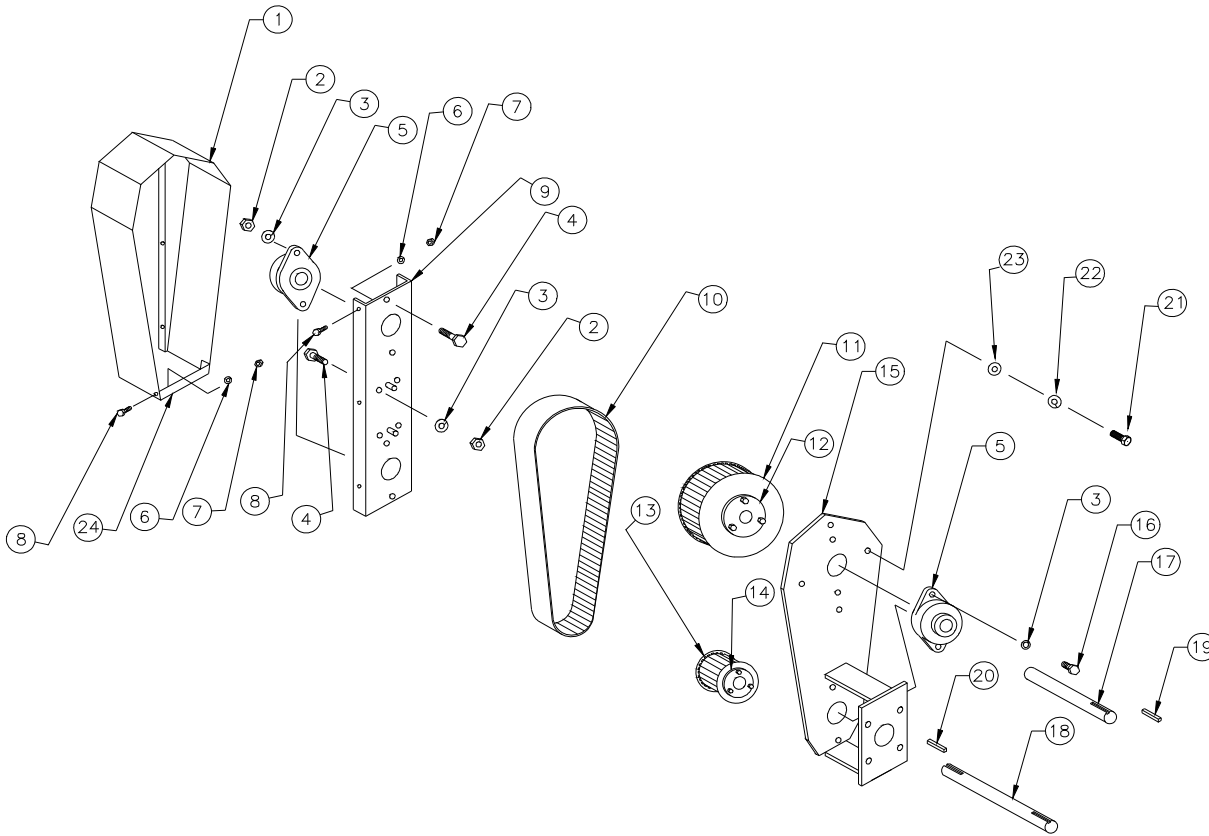
*36, *37, *42, *43 - SPECIFY FENDER WIDTH.

*36, *42 - CHECK MIXER. END CLOSURES ARE NOT REQUIRED FOR MOST UNITS ABOVE S/N (405HC0000, 470HC0000, 540HC0000), ITEM *43 REMAINS OPTIONAL AS A CENTER SUPPORT - SPECIFY FENDER WIDTH WHEN ORDERING.

*45, *46, *47, *48, *49 - CHECK MIXER. ITEMS *45-*49 (MOUNT PLATES AND HARDWARE) REPLACE ITEMS *25-*28 (SUB-FRAME MOUNT STRAP AND HARDWARE) FOR MOST UNITS ABOVE S/N (405HC0000, 470HC0000, 540HC0000).

NPN - NO PART NUMBER

GTD



GTD

ITEM PART # QTY DESCRIPTION

**	A9678	1	GTD ASSY (16") WITH OUT RING
**	A9677	1	GTD ASSY (19 1/4") WITH OUT RING
**	A9676	1	GTD ASSY (22 3/4") WITH OUT RING
1	A15045	1	COVER ASSEMBLY (16" GTD)
1	A15588	1	COVER ASSEMBLY (19 1/4" GTD)
1	A17151	1	COVER ASSEMBLY (22 3/4" GTD)
2	300826	4	NUT
3	100272	14	LOCK WASHER
4	101444	4	SCREW
5	302071	4	BEARING
6	100304	8	LOCK WASHER (16" GTD)
6	100304	10	LOCK WASHER (19 1/4" GTD)
6	100304	12	LOCK WASHER (22 3/4" GTD)
7	100221	8	NUT (16" GTD)
7	100221	10	NUT (19 1/4" GTD)
7	100221	12	NUT (22 3/4" GTD)
8	101819	8	SCREW (16" GTD)
8	101819	10	SCREW (19 1/4" GTD)
8	101819	12	SCREW (22 3/4" GTD)
9	15042	1	CHANNEL, FORMED (16" GTD)
9	15802	1	CHANNEL, FORMED (19 1/4" GTD)
9	17138	1	CHANNEL, FORMED (22 3/4" GTD)

ITEM PART # QTY DESCRIPTION

10	102021	1	POLY CHAIN, (16" GTD)
10	102018	1	POLY CHAIN, (19 1/4" GTD)
10	102520	1	POLY CHAIN, (22 3/4" GTD)
*11	102020	1	SPROCKET
*12	101734	1	BUSHING
*13	102019	1	SPROCKET
*14	101730	1	BUSHING
*15	A17494	1	BACK ASSY (16")
*15	A17535	1	BACK ASSY (19 1/4")
*15	A17537	1	BACK ASSY (22 3/4")
16	101817	4	SCREW
*17	14682	1	SHAFT, TOP
*18	14679	1	SHAFT, BOTTOM
*19	14717	1	KEY
*20	34890	1	KEY
21	102853	4	SCREW
22	100272	4	LOCK WASHER
23	100838	4	FLAT WASHER
24	16343	1	COVER TIGHTENER (16" GTD)
24	16471	1	COVER TIGHTENER (19 1/4" & 22 3/4" GTD)

NOTE: GTD MEASURED LENGTH IS FROM CENTER TO CENTER OF TOP AND BOTTOM SHAFTS, THE BELT WIDTH IS 1 1/2 INCHES.

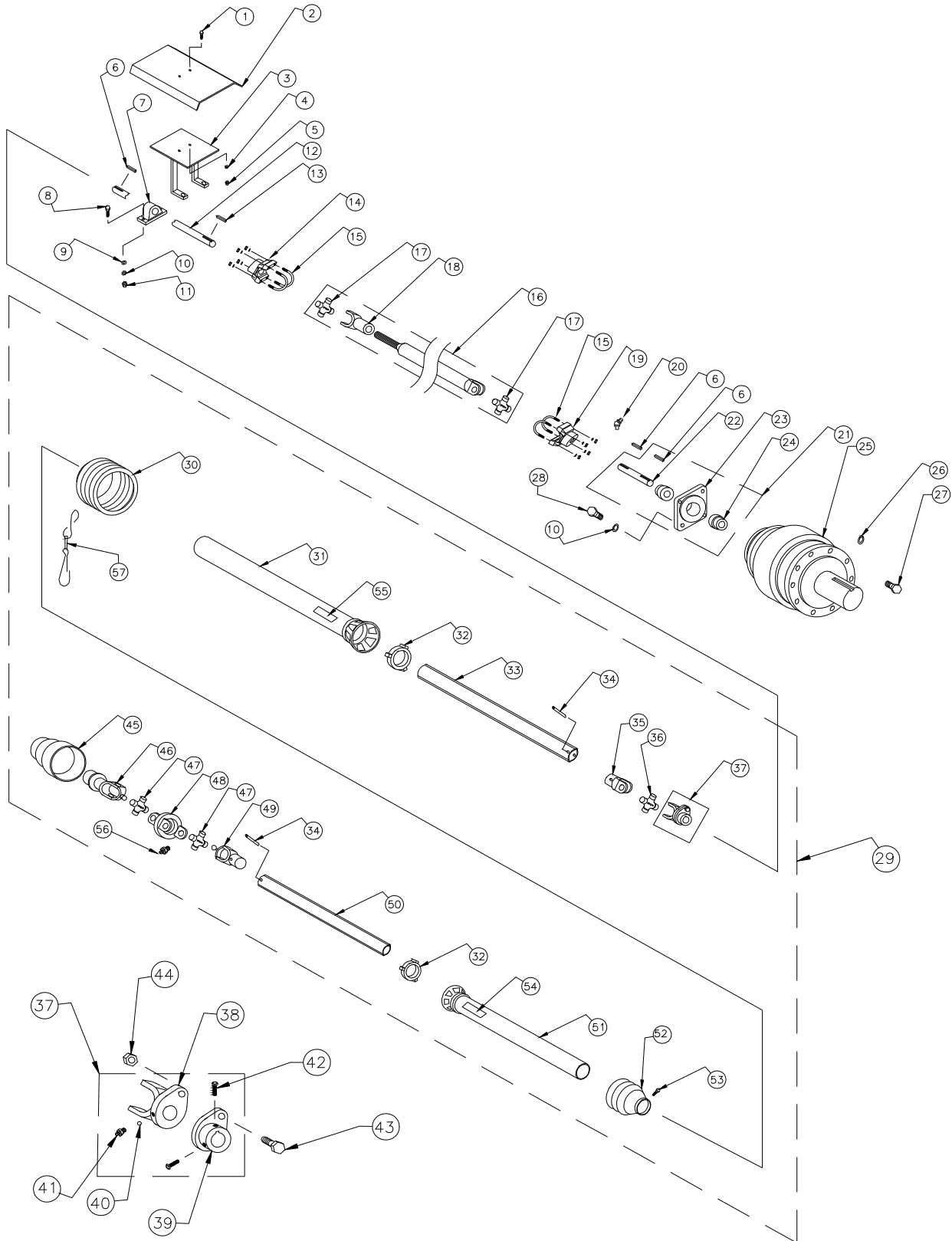
** - MIXERS BELOW S/N (405HB2000, 470HB2000, 540HB2000) USE GTD P/N (A9560, A9561, A9562); CHECK MIXER IF S/N IS BETWEEN (405HB2000, 470HB2000, 540HB2000) AND (405HB3000, 470HB3000, 540HB3000).

*11, *12, *17, *19 CAN BE ORDERED AS A17154 SPROCKET ASSEMBLY.

*13, *14, *18 & *20 CAN BE ORDERED AS A17155 SPROCKET ASSEMBLY.

*15 - MIXERS BELOW S/N (405HB2000, 470HB2000, 540HB2000) USE P/N (A15043, A15800, A17137); CHECK MIXER IF S/N IS BETWEEN (405HB2000, 470HB2000, 540HB2000) AND (405HB3000, 470HB3000, 540HB3000).

DRIVE LINE TRAILER



DRIVE LINE TRAILER

ITEM	PART #	QTY	DESCRIPTION	ITEM	PART #	QTY	DESCRIPTION
1	101134	2	SCREW	15	100882	2	U-BOLT KIT
2	13511	1	DRIVE LINE SHIELD	*16	102555	1	DRIVE SHAFT
3	A15694	1	SHIELD MOUNT	17	100785	2	CROSS
4	100170	2	LOCK WASHER	18	NPN	1	YOKE - SPICER # 2-3-8001 kx
5	100297	2	NUT	19	100598	1	YOKE, BOLT ON
6	10983	3	KEY	20	102366	1	GREASE ZERK, 45°
7	101435	3	BEARING	21	A15707	1	INPUT ADAPTER ASSY
8	102483	2	SCREW	22	15167	1	INPUT ADAPTER SHAFT
8	102482	4	SCREW	23	A15170	1	INPUT ADAPTER
9	100838	6	FLAT WASHER	24	101827	2	BEARING
10	100272	10	LOCK WASHER	*25	102101	1	GEAR BOX PLANETARY ED2090 21.08:1
11	300826	6	NUT	*25	102356	1	GEAR BOX PLANETARY ED2090 14.28:1
*12	NPN	1	DRIVE SHAFT - specify model	26	101323	10	WASHER
13	16339	1	KEY	27	102471	10	SCREW
14	100724	1	YOKE, BOLT ON	28	101444	4	SCREW
29	102329	1	PTO DRIVE SHAFT - 540 RPM 6 SPLINE	*29	102449	1	PTO DRIVE SHAFT - 1000 RPM 21 SPLINE
30	102063	1	5 RIB CONE	30	102935	1	6 RIB CONE
31	102060	1	SHIELD TUBE, INNER	31	102932	1	SHIELD TUBE, INNER
32	102058	2	BEARING RING	32	102058	2	BEARING RING
33	102055	1	PROFILE	33	102928	1	PROFILE
34	102053	2	SPRING PIN	34	102925	2	SPRING PIN
35	102056	1	INNER YOKE	35	102929	1	INNER YOKE
36	102057	1	CROSS	36	102926	1	CROSS
37	102251	1	SHEAR CLUTCH ASSEMBLY	37	102450	1	SHEAR CLUTCH ASSEMBLY
38	4389	1	SHEAR YOKE	38	4465	1	SHEAR YOKE
39	4392	1	HUB, 1 3/8 BORE	39	4464	1	HUB, 1 3/8 BORE
40	4391	24	BALL BEARING	40	4391	24	BALL BEARING
41	4390	1	GREASE ZERK	41	4390	1	GREASE ZERK
42	102470	2	SET SCREW	42	102470	2	SET SCREW
*43	***	1	SHEAR BOLT	*43	***	1	SHEAR BOLT
44	100297	1	NUT	44	100297	1	NUT
45	102061	1	CV CONE & BEARING ASSY	45	102933	1	CV CONE & BEARING ASSY
46	102047	1	YOKE, 540 RPM 6 SPLINE	46	102920	1	YOKE, 1000 RPM 21 SPLINE
47	102052	2	CROSS	47	102924	2	CROSS
48	102049	1	DOUBLE YOKE	48	102922	1	DOUBLE YOKE
49	102051	1	INNER YOKE	49	102923	1	INNER YOKE
50	102054	1	PROFILE	50	102927	1	PROFILE
51	102059	1	SHIELD TUBE, OUTER	51	102931	1	SHIELD TUBE, OUTER
52	102062	1	3 RIB CONE	52	102934	1	3 RIB CONE
53	102064	8	SCREW (CV CONE)	53	102064	8	SCREW (CV CONE)
54	102066	1	DECAL, OUTER IN	54	102066	1	DECAL, OUTER IN
55	102067	1	DECAL, INNER IN	55	102067	1	DECAL, INNER IN
56	102050	1	GREASE ZERK	56	102050	1	GREASE ZERK
57	102065	1	SAFETY CHAIN	57	102065	1	SAFETY CHAIN

NOTE: *12 WHEN ORDERING MEASURE LENGTH AND DIAMETER.

*16 - 102555 WAS 100884 [MIXERS BELOW S/N (405HB2000, 470HB2000, 540HB2000)]. CHECK MIXER IF S/N IS BETWEEN (405HB2000, 470HB2000, 540HB2000) AND (405HB3000, 470HB3000, 540HB3000).

*25 - 102101 USED ON 405, 470, 540 WITH 1000 RPM 21 SPLINE DRIVE SHAFT.

*25 - 102356 USED ON 405, 470, 540 WITH 540 RPM 6 SPLINE DRIVE SHAFT.

*29 - 102449 WAS 102250 [MODEL 405, 470 MIXERS BELOW S/N (405HB4000, 470HB4000)]. CHECK MIXER IF S/N IS BETWEEN (405HB4000, 470HB4000) AND (405HB5000, 470HB5000).

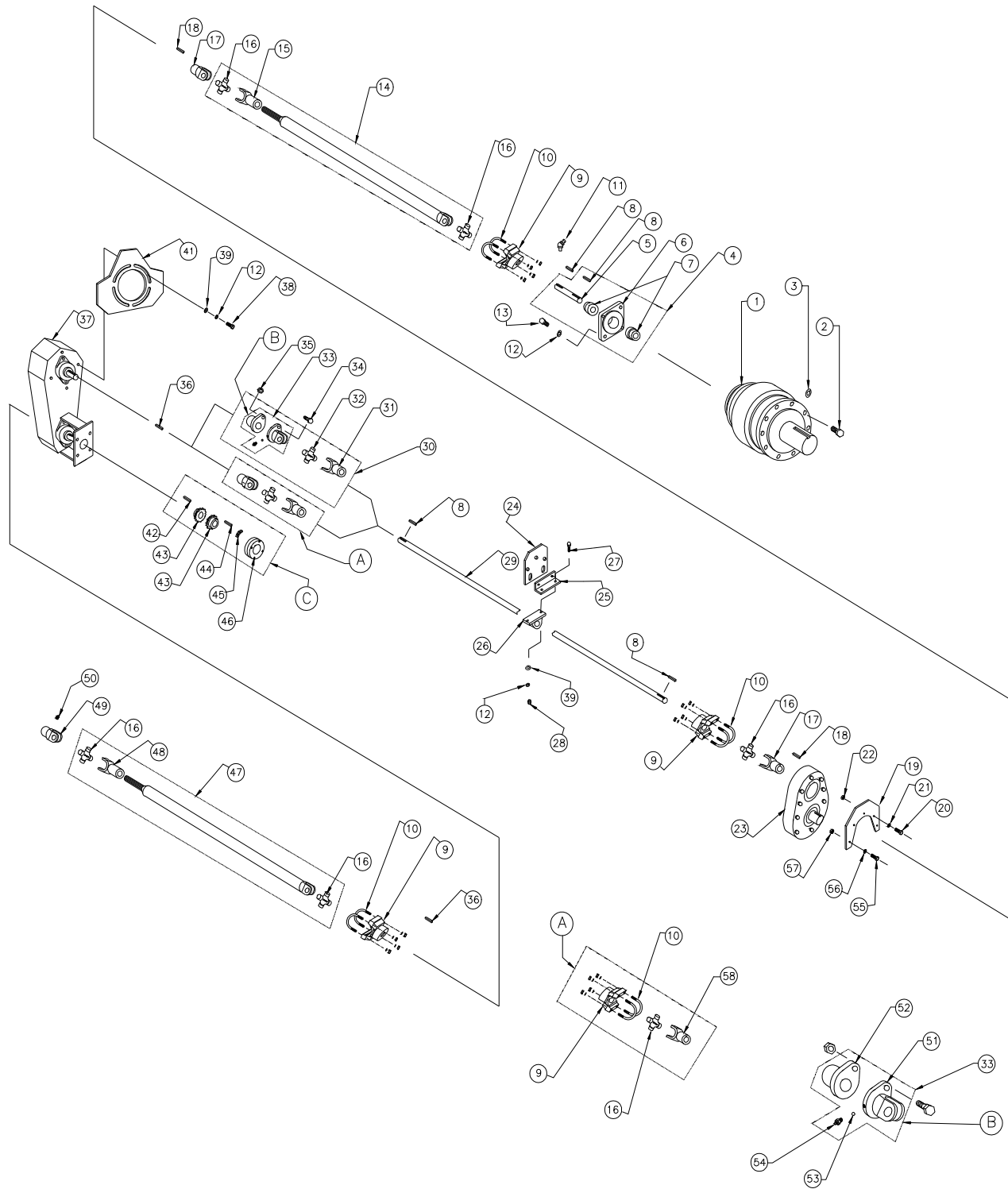
*43 SEE CHART BELOW TO DETERMINE SHEAR BOLT USED.

NPN - NO PART NUMBER

MIXER	PTO	PART #	GRADE	SHEAR POINT
405-470-540- TRAILER	540 RPM	102571	GRADE-2	SHANK
405 TRAILER	1000 RPM	102570	GRADE-2	THREADS
470-540 TRAILER	1000 RPM	102571	GRADE-2	SHANK

DRIVE LINE TRUCK

W/ 16.83 GEAR BOX WITH REVERSER



DRIVE LINE TRUCK

W/ 16.83 GEAR BOX WITH REVERSER

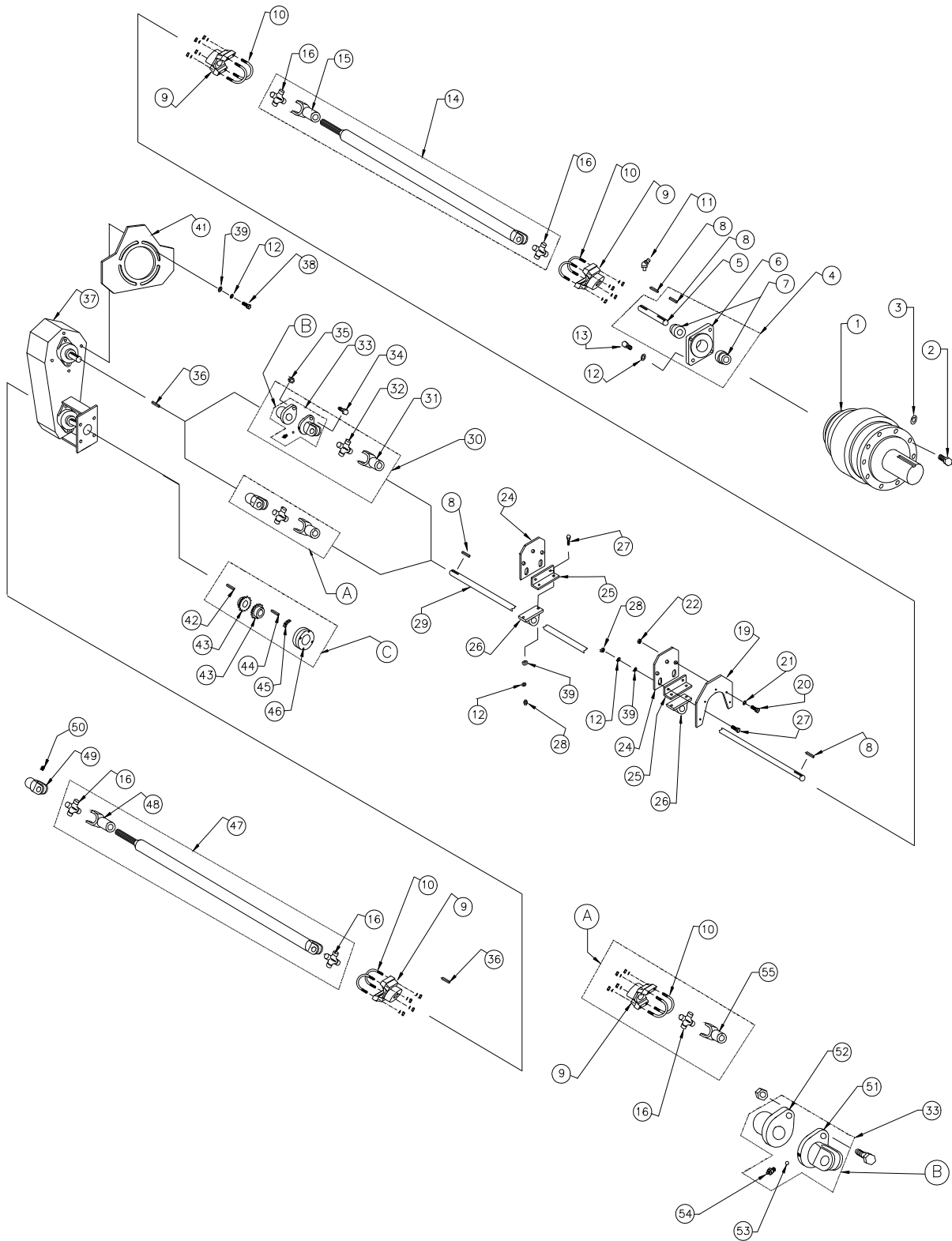
ITEM	PART #	QTY	DESCRIPTION	ITEM	PART #	QTY	DESCRIPTION
*1	102101	1	GEAR BOX ED2090 21.08:1	28	300826	8	NUT (470, 540)
2	102471	10	SCREW	*29	NPN	1	DRIVE SHAFT
3	101323	10	WASHER	*30	102388	1	SHEAR CLUTCH W/ CROSS & YOKE
4	A15707	1	INPUT ADAPTER ASSY	31	4485	1	YOKE
5	15167	1	INPUT ADAPTER SHAFT	32	102057	1	CROSS
6	A15170	1	ADAPTER FLANGE ASSY	*33	102331	1	SHEAR CLUTCH
7	101827	2	BEARING	*34	***	1	SHEAR BOLT
8	10983	4	KEY	35	102574	1	NUT
9	100598	3	YOKE, BOLT ON	36	16646	2	KEY
10	100882	3	U-BOLT KIT	*37	A9678	1	GTD 16"
11	102366	1	GREASE ZERK	*37	A9677	1	GTD 19 1/4"
12	100272	12	LOCK WASHER (405)	*37	A9676	1	GTD 22 3/4"
12	100272	16	LOCK WASHER (470, 540)	38	102853	4	SCREW
13	101444	4	SCREW	39	100838	8	FLAT WASHER (405)
14	102116	1	DRIVE SHAFT ASSY WELDED	39	100838	12	FLAT WASHER (470, 540)
15	NPN	1	YOKE - SPICER # 2-3-8001 kx	*41	18142	1	GTD HANGER
16	100785	5	CROSS	42	18438	1	KEY
17	101867	2	YOKE, SNAP RING	43	101874	2	SPROCKET, CHAIN COUPLER
18	16339	2	KEY	44	NPN	1	KEY (391-1781-021)
19	15060	1	PLATE, GEAR BOX HANGER - WELD ON	45	101875	1	CHAIN
20	102494	4	SCREW	46	101876	1	CHAIN COUPLER COVER
21	100170	4	LOCK WASHER	47	100884	1	DRIVE SHAFT ASSY UNWELDED
22	100297	4	NUT	48	100881	1	YOKE, SPLINED
23	102225	1	REVERSER, GEAR BOX 1:1	49	16391	1	YOKE
24	15178	1	HANGER 4 3/4" x 7" (405, 470, 540)	50	100241	2	SET SCREW
24	15179	1	HANGER 6" x 7" (470, 540)	51	4389	1	SHEAR YOKE
25	15180	1	BEARING ANGLE (405)	52	4393	1	HUB, 1 1/4 BORE
25	15180	2	BEARING ANGLE (470, 540)	53	4391	24	BALL BEARING
26	100055	1	BEARING (405)	54	4390	1	GREASE ZERK
26	100055	2	BEARING (470, 540)	55	101661	1	SCREW
27	102482	4	SCREW (405)	56	100271	1	LOCK WASHER
27	102482	8	SCREW (470, 540)	57	100254	1	NUT
28	300826	4	NUT (405)	58	100599	1	YOKE

NOTE: *1 - 102101 WAS 102103 ED 2065 15.2:1 (MODEL 405 MIXERS BELOW S/N 405HB4000); CHECK MIXER IF S/N IS BETWEEN 405HB4000 AND 405HB5000.
 *29 WHEN ORDERING MEASURE LENGTH AND DIAMETER.
 *30 & *33 DO NOT INCLUDE ITEMS *34 & *35.
 *34 REVIEW CHART TO DETERMINE SHEAR BOLT USED.
 *37 - MIXERS BELOW S/N (405HB2000, 470HB2000, 540HB2000) USE GTD P/N (A9560, A9561, A9562); CHECK MIXER IF S/N IS BETWEEN (405HB2000, 470HB2000, 540HB2000) AND (405HB3000, 470HB3000, 540HB3000). GTD MEASURED LENGTH IS FROM CENTER TO CENTER OF TOP AND BOTTOM SHAFTS.
 *41 - THE GTD MOUNT PLATE IS NOW AN INTEGRAL PART OF THE FRONT END BOTTOM SHEET (P/N 18465) FOR MOST UNITS ABOVE S/N (405HC0000, 470HC0000, 540HC0000). VERIFY TYPE (WELD-ON OR FRONT END BOTTOM SHEET) WHEN ORDERING REPLACEMENT.
 NPN - NO PART NUMBER

MIXER	PART #	GRADE	SHEAR POINT
405-470-540 TRUCK	102570	GRADE-2	THREADS

DRIVE LINE TRUCK

W/ 16.83 GEAR BOX, W/O REVERSER



DRIVE LINE TRUCK

W/ 16.83 GEAR BOX W/O REVERSER

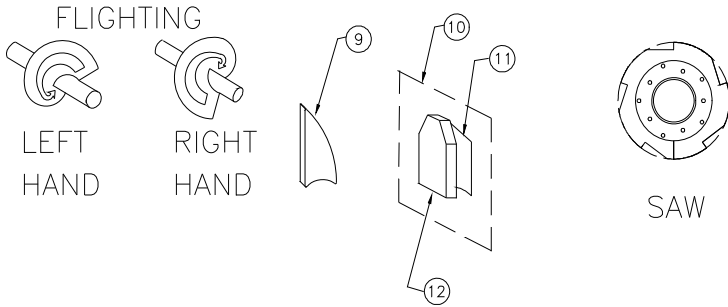
ITEM	PART #	QTY	DESCRIPTION	ITEM	PART #	QTY	DESCRIPTION
*1	102101	1	GEAR BOX ED2090 21.08:1	*29	NPN	1	DRIVE SHAFT
2	102471	10	SCREW	*30	102388	1	SHEAR CLUTCH W/ CROSS & YOKE
3	101323	10	WASHER	31	4485	1	YOKE
4	A15707	1	INPUT ADAPTER ASSY	32	102057	1	CROSS
5	15167	1	INPUT ADAPTER SHAFT	*33	102331	1	SHEAR CLUTCH
6	A15170	1	ADAPTER FLANGE ASSY	*34	***	1	SHEAR BOLT
7	101827	2	BEARING	35	102574	1	NUT
8	10983	4	KEY	36	16646	2	KEY
9	100598	3	YOKE, BOLT ON	*37	A9678	1	GTD 16"
10	100882	3	U-BOLT KIT	*37	A9677	1	GTD 19 1/4"
11	102366	1	GREASE ZERK	*37	A9676	1	GTD 22 3/4"
12	100272	16	LOCK WASHER (405)	38	102853	4	SCREW
12	100272	20	LOCK WASHER (470, 540)	39	100838	12	FLAT WASHER (405)
13	101444	4	SCREW	39	100838	16	FLAT WASHER (470, 540)
14	102116	1	DRIVE SHAFT ASSY WELDED	*41	18142	1	GTD HANGER
15	NPN	1	YOKE - SPICER # 2-3-8001 kx	42	18438	1	KEY
16	100785	4	CROSS	43	101874	2	SPROCKET, CHAIN COUPLER
19	15060	1	PLATE, GEAR BOX HANGER - WELD ON	44	NPN	1	KEY (391-1781-021)
20	100692	3	SCREW	45	101875	1	CHAIN
21	100271	3	LOCK WASHER	46	101876	1	CHAIN COUPLER COVER
22	100254	3	NUT	47	100884	1	DRIVE SHAFT ASSY UNWELDED
24	15935	2	HANGER 7" x 7 1/2" (405)	48	100881	1	YOKE, SPLINED
24	15935	3	HANGER 7" x 7 1/2" (470, 540)	49	16391	1	YOKE
25	15180	2	BEARING ANGLE (405)	50	100241	2	SET SCREW
25	15180	3	BEARING ANGLE (470, 540)	51	4389	1	SHEAR YOKE
26	100055	2	BEARING (405)	52	4393	1	HUB, 1 1/4 BORE
26	100055	3	BEARING (470, 540)	53	4391	24	BALL BEARING
27	102482	8	SCREW (405)	54	4390	1	GREASE ZERK
27	102482	12	SCREW (470, 540)	55	100599	1	YOKE
28	300826	8	NUT (405)				
28	300826	12	NUT (470, 540)				

NOTE: *1 - 102101 WAS 102103 ED 2065 15.2:1 (MODEL 405 MIXERS BELOW S/N 405HB4000). CHECK MIXER IF S/N IS BETWEEN 405HB4000 AND 405HB5000.
 *29 WHEN ORDERING MEASURE LENGTH AND DIAMETER.
 *30 & *33 DO NOT INCLUDE ITEMS *34 & *35.
 *34 REVIEW CHART TO DETERMINE SHEAR BOLT USED.
 *37 - MIXERS BELOW S/N (405HB2000, 470HB2000, 540HB2000) USE GTD P/N (A9560, A9561, A9562); CHECK MIXER IF S/N IS BETWEEN (405HB2000, 470HB2000, 540HB2000) AND (405HB3000, 470HB3000, 540HB3000). GTD MEASURED LENGTH IS FROM CENTER TO CENTER OF TOP AND BOTTOM SHAFTS.
 *41 - THE GTD MOUNT PLATE IS NOW AN INTEGRAL PART OF THE FRONT END BOTTOM SHEET (P/N 18465) FOR MOST UNITS ABOVE S/N (405HC0000, 470HC0000, 540HC0000). VERIFY TYPE (WELD-ON OR FRONT END BOTTOM SHEET) WHEN ORDERING REPLACEMENT.
 NPN - NO PART NUMBER

MIXER	PART #	GRADE	SHEAR POINT
405-470-540 TRUCK	102570	GRADE-2	THREADS

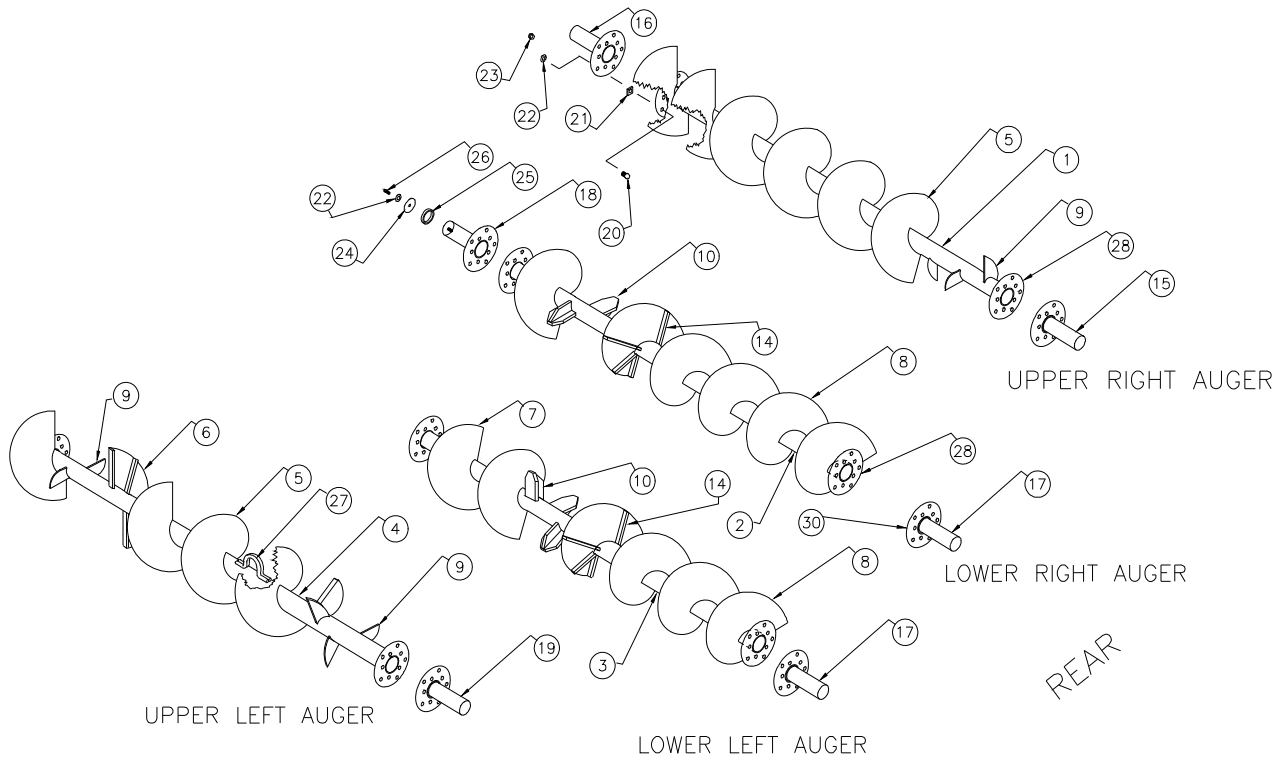
AUGER ASSEMBLY

TYPICAL EXAMPLE



TO DETERMINE FLIGHTING TYPE:
 COMPARE THE FLIGHTING WITH THE THREADS OF A BOLT AND IF THE FLIGHTING IS WRAPPED AROUND THE PIPE EXTENDING AWAY FROM YOU IN A CLOCKWISE DIRECTION THEN IT IS RIGHT HAND (RH) FLIGHTING IF THE FLIGHTING IS WRAPPED AROUND THE PIPE EXTENDING AWAY FROM YOU IN A COUNTER CLOCKWISE DIRECTION THEN IT IS LEFT HAND (LH) FLIGHTING.

BEARINGS: SEE REAR DRIVE



NOTE:

THESE ARE NOT ACTUAL FLIGHTING ARRANGEMENTS, THESE DRAWINGS ARE FOR ILLUSTRATION ONLY. PLEASE CHECK AUGER TUBE DIAMETER, ORIGINAL FLIGHTING SIZE, AND FLIGHTING ARRANGEMENT BEFORE ORDERING REPLACEMENT FLIGHTING. PLEASE SPECIFY AR OR MILD STEEL. SEE AUGER ORDER FORM.

AUGER ASSEMBLY

ITEM	PART #	QTY	DESCRIPTION	ITEM	PART #	QTY	DESCRIPTION
1	**		AUGER ASSY, UPPER RIGHT	15	A14401	1	STUB SHAFT, UPPER REAR, RH (405, 470)
2	**		AUGER ASSY, LOWER RIGHT	*15	A18519	1	STUB SHAFT, UPPER REAR, RH (540)
3	**		AUGER ASSY, LOWER LEFT	16	A14544	2	STUB SHAFT, UPPER FRONT
4	**		AUGER ASSY, UPPER LEFT	17	A14401	2	STUB SHAFT, LOWER REAR
5	18571	AR	FLIGHTING, RH, 3/8 x 24 OD x 24P x 8 5/8 ID SAW	*17	A18518	2	STUB SHAFT, LOWER REAR
*5	16436	AR	FLIGHTING, RH, 3/8 x 20 OD x 20P x 5 ID SPRL	*18	A18478	2	STUB SHAFT, LOWER FRONT
6	18570	AR	FLIGHTING, LH, 3/8 x 24 OD x 24P x 8 5/8 ID SAW	*19	A18519	1	STUB SHAFT, UPPER REAR, LH
*6	16437	AR	FLIGHTING, LH, 3/8 x 20 OD x 20P x 5 ID SPRL	20	100555	40	SCREW
7	17314	AR	FLIGHTING, RH, 1/2 x 24 OD x 24P x 8 5/8 ID SAW	21	12719	AR	SHIM
*7	17689	AR	FLIGHTING, RH, 1/2 x 23.25 OD x 24P x 8 5/8 ID SAW	22	100554	42	LOCK WASHER
8	17315	AR	FLIGHTING, LH, 1/2 x 24 OD x 24P x 8 5/8 ID SAW	23	100252	40	NUT
*8	17688	AR	FLIGHTING, LH, 1/2 x 23.25 OD x 24P x 8 5/8 ID SAW	24	15404	2	WASHER, SHAFT SPACER
9	18600	AR	KICKER, CURVED	25	15403	2	SHAFT SPACER RING
10	18977	AR	KICKER, PADDLE ASSEMBLY	26	101082	2	SCREW
11	17334	AR	KICKER BRACE	27	16392	8	AUGER HOOK
12	17333	AR	KICKER PADDLE	28	15175	8	AUGER FLANGE PLATE
14	16450	AR	BRACE, 1/2 x 1 1/2 x 6 3/4	30	18476	8	STUB SHAFT FLANGE PLATE

NOTE: 5, 6 - USED ON ALL UNITS S/N (405HB6000, 470HB6000, 540HB5000) AND ABOVE.

*5, *6 - USED ON MIXERS BELOW S/N (405HB5000, 470HB5000, 540HB4000). CHECK MIXER IF S/N IS BETWEEN (405HB5000, 470HB5000, 540HB4000) AND (405HB6000, 470HB6000, 540HB5000).

*7, *8 - REDUCED DIAMETER FLIGHTING.

*15 - A18519 WAS A14401 (MODEL 540 MIXERS BELOW S/N 540HB4000). CHECK MIXER IF S/N IS BETWEEN 540HB4000 AND 540HB5000.

17 - USED ON ALL UNITS BELOW S/N (405HB5000, 470HB5000, 540HB4000), ALSO USED ON ALL UNITS ABOVE S/N (405HB9000, 470HB9000, 540HB9000). CHECK MIXER IF S/N IS BETWEEN (405HB5000, 470HB5000, 540HB4000) AND (405HB6000, 470HB6000, 540HB5000) OR BETWEEN (405HB8000, 470HB8000, 540HB8000) AND (405HB9000, 470HB9000, 540HB9000).

*17 - USED ON UNITS FROM S/N (405HB6000, 470HB6000, 540HB5000) THROUGH (405HB8000, 470HB8000, 540HB8000). CHECK MIXER IF S/N IS BETWEEN (405HB5000, 470HB5000, 540HB4000) AND (405HB6000, 470HB6000, 540HB5000) OR BETWEEN (405HB8000, 470HB8000, 540HB8000) AND (405HB9000, 470HB9000, 540HB9000).

*18 - A18478 WAS A15590 [FOR UNITS BELOW S/N (405HB5000, 470HB5000, 540HB4000)]. CHECK MIXER IF S/N IS BETWEEN (405HB5000, 470HB5000, 540HB4000) AND (405HB6000, 470HB6000, 540HB5000).

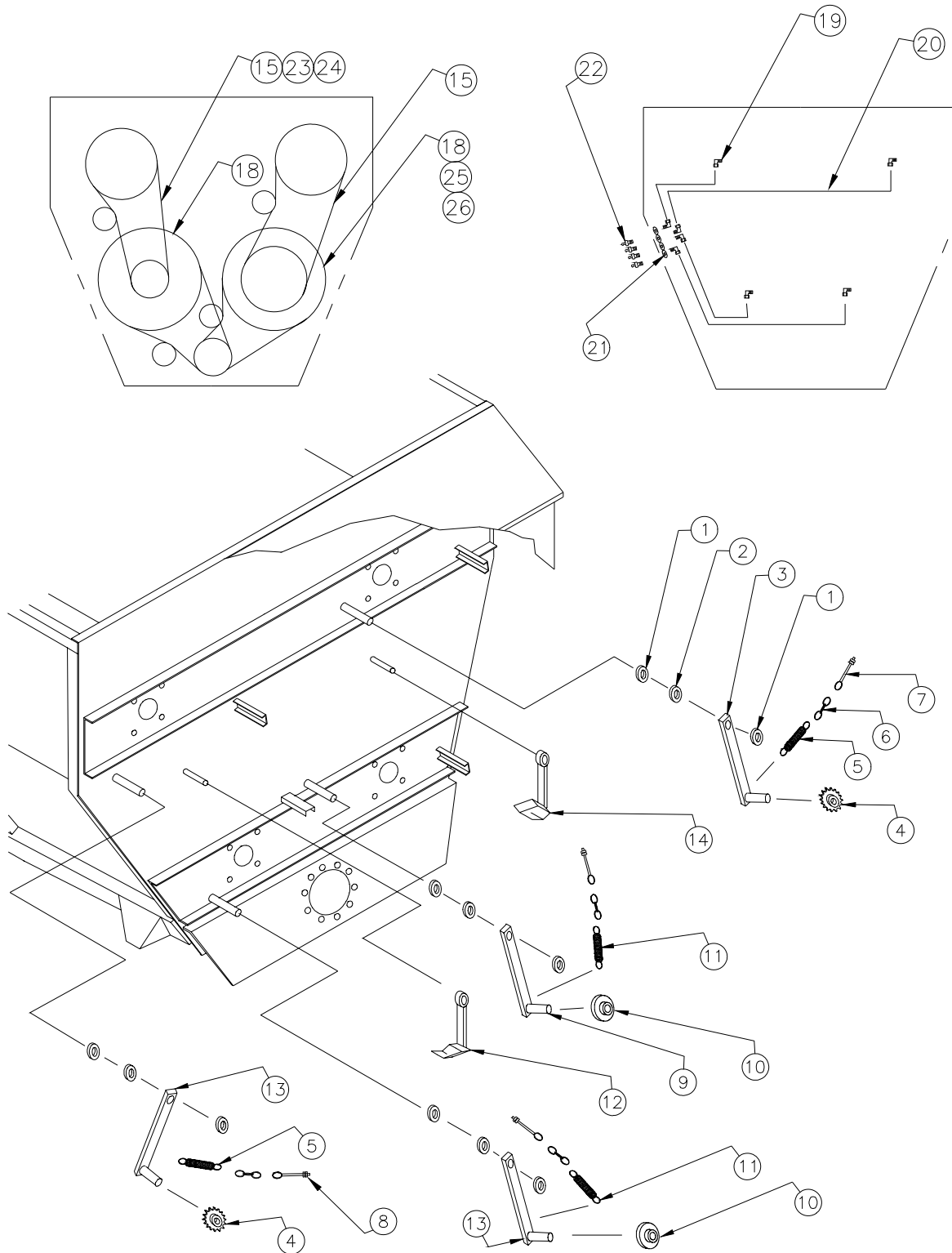
*19 - A18519 WAS A14401 [405-470-540 MIXERS BELOW S/N (405HB5000, 470HB5000, 540HB4000)]. CHECK MIXER IF S/N IS BETWEEN (405HB5000, 470HB5000, 540HB4000) AND (405HB6000, 470HB6000, 540HB5000).

** DUE TO VARIOUS AUGER CONFIGURATIONS, PLEASE CHECK YOUR AUGER BEFORE ORDERING.

AR - AS REQUIRED

REAR DRIVE ASSEMBLY

WITH 140 MAIN DRIVE CHAIN



REAR DRIVE ASSEMBLY

WITH 140 MAIN DRIVE CHAIN

ITEM	PART #	QTY	DESCRIPTION	ITEM	PART #	QTY	DESCRIPTION
1	101829	8	COLLAR W/ SET SCREW	*13	A15012	2	IDLER ARM
2	102355	4	BEARING, NYLON	14	A18102	1	OILER ASSY
*3	A15365	1	IDLER ARM	*15	102954	2	DRIVE CHAIN (W/ CONN.) 100 x 92
4	A13375	2	SPROCKET	*18	102955	2	DRIVE CHAIN (W/ CONN.) 140 x 58
5	101831	2	SPRING 8"	19	102797	8	90° COMP. FITTING
6	7070514	AR	CHAIN	20	6060031	1	ALUMINUM TUBING 16'
7	101840	4	EYE BOLT	21	100300	4	WASHER, FLAT
8	100254	8	NUT	22	100218	4	GREASE FITTING, 1/8 NPT
*9	A15937	1	IDLER ARM	23	100316	AR	CONNECTOR LINK, 100
10	A14900	2	IDLER ROLLER ASSY	24	100315	AR	OFFSET LINK, 100
11	101832	2	SPRING	25	102357	AR	CONNECTOR LINK, 140
12	A18260	1	OILER ASSY	26	102953	AR	OFFSET LINK, 140

NOTE: *3, *9, & *13 REQUIRE NYLON BEARINGS (#2).

*15 - UPPER LEFT AUGER DRIVE CHAIN (VIEW FROM REAR OF MIXER) WAS P/N 102100, CHAIN, #100 x 89; UPPER RIGHT AUGER DRIVE CHAIN WAS P/N 102825, CHAIN, #100 x 91 [FOR UNITS BELOW S/N (405HB4000, 470HB4000, 540HB4000)]. CHECK MIXER IF S/N IS BETWEEN (405HB4000, 470HB4000, 540HB4000) AND (405HB5000, 470HB5000, 540HB5000).

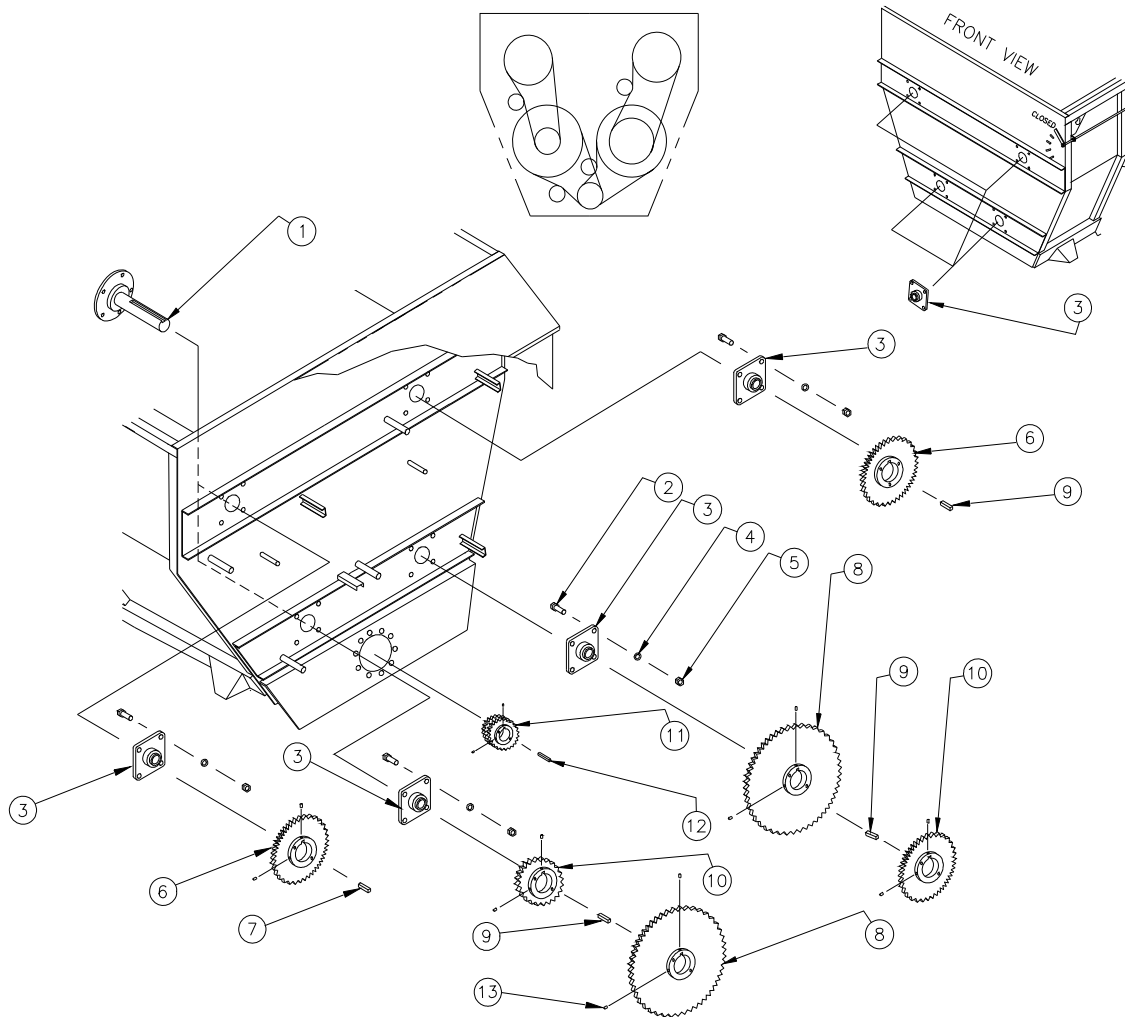
*18 - 102955 WAS 102789, CHAIN, #140 x 57(56) [FOR UNITS BELOW S/N (405HB4000, 470HB4000, 540HB4000)]. CHECK MIXER IF S/N IS BETWEEN (405HB4000, 470HB4000, 540HB4000) AND (405HB5000, 470HB5000, 540HB5000).

23, 24, 25, 26 - NOT SHOWN

AR - AS REQUIRED

REAR DRIVE ASSEMBLY

WITH 140 MAIN DRIVE CHAIN



REAR DRIVE ASSEMBLY

WITH 140 MAIN DRIVE CHAIN

ITEM	PART #	QTY	DESCRIPTION
1	A18519	1	STUB SHAFT, UPPER LH
1	A14401	3	STUB SHAFT
2	100555	32	SCREW
3	101701	8	BEARING
4	100554	32	LOCK WASHER
5	100252	32	NUT
*6	102412	2	SPROCKET (36 TOOTH - 100 CHAIN)

ITEM	PART #	QTY	DESCRIPTION
7	18587	1	KEY
8	102413	2	SPROCKET (48 TOOTH - 140 CHAIN)
9	19065	3	KEY
*10	102411	2	SPROCKET (32 TOOTH - 100 CHAIN)
11	102414	1	SPROCKET, DOUBLE (13-140)
12	4466	1	KEY
13	4467	12	SET SCREW 3/4 - 10 x 3/4

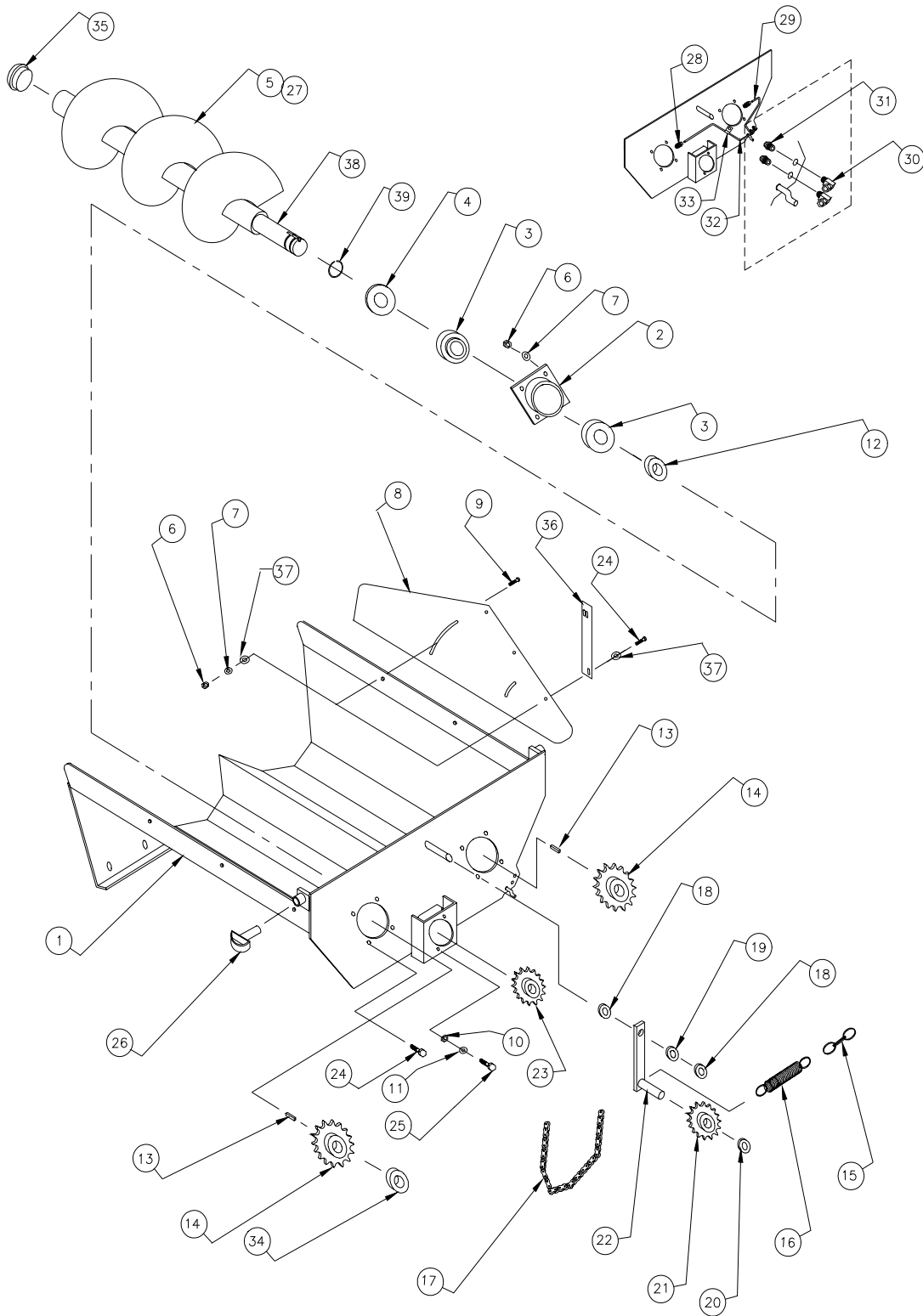
NOTE: *6 - 102412 WAS 102410 [FOR UNITS BELOW S/N (405HB4000, 470HB4000, 540HB4000)]. CHECK MIXER IF S/N IS BETWEEN (405HB4000, 470HB4000, 540HB4000) AND (405HB5000, 470HB5000, 540HB5000).

*10 - LOWER LEFT LOCATION WAS 102412; LOWER RIGHT LOCATION WAS 102420 [FOR UNITS BELOW S/N (405HB4000, 470HB4000, 540HB4000)]. CHECK MIXER IF S/N IS BETWEEN (405HB4000, 470HB4000, 540HB4000) AND (405HB5000, 470HB5000, 540HB5000).

ALWAYS DETERMINE ACTUAL NUMBER OF TEETH ON SPROCKETS BEFORE ORDERING.

DISCHARGE

FORMED BOTTOM



DISCHARGE

FORMED BOTTOM

ITEM	PART #	QTY	DESCRIPTION	ITEM	PART #	QTY	DESCRIPTION
*1	A16616	1	DISCHARGE BOTTOM ASSY (27.5")	17	15131	1	CHAIN
*1	A16021	1	DISCHARGE BOTTOM ASSY (34.5")	18	101830	2	SET COLLAR
*1	A16669	1	DISCHARGE BOTTOM ASSY (42.5")	19	102003	1	BUSHING
2	A14590	2	AUGER BEARING HOUSING	20	NSS	1	BEARING LOCK COLLAR
3	16819	4	BEARING (1 7/16 ID)	21	A15133	1	SPROCKET
4	15617	2	BEARING CAP	22	A15013	1	TENSIONER ARM
*5	A16619	2	DISCHARGE AUGER (27.5")	23	102128	1	SPROCKET
*5	A14500	2	DISCHARGE AUGER (34.5")	24	100240	12	SCREW
*5	A15127	2	DISCHARGE AUGER (42.5")	25	100230	2	SCREW
6	100254	16	NUT	26	A15285	2	PULL PIN, DISCHARGE
7	100271	16	LOCK WASHER	27	15166	AR	FLIGHTING, (10" PITCH PER FLIGHT)
*8	16604	2	DISCHARGE HANGER (27.5")	28	102759	2	FITTING, STRAIGHT COMP
*8	16788	2	DISCHARGE HANGER (34.5")	29	6060031	1	TUBE, 6 1/2" LONG
*8	16789	2	DISCHARGE HANGER (42.5")	30	102753	2	FITTING 90° COMP
*8	NPN	2	HANGER HALF, WITH HYD. LIFT	31	102454	2	GREASE ZERK
*8	NPN	2	HANGER HALF, WITH HYD. LIFT	32	6060031	1	TUBE, 24" LONG
9	102096	4	SCREW	33	102348	1	HOSE MOUNT CLAMP
10	100250	2	NUT	34	101964	2	BUSHING
11	100272	2	LOCK WASHER	35	102578	2	CAP, AUGER END
12	NSS	2	BEARING LOCK COLLAR	36	16078	2	BAR, DISCHARGE SPACER
13	15620	2	KEY	37	100300	16	WASHER, FLAT
14	101963	2	SPROCKET	38	14502	2	DISCHARGE AUGER SHAFT
15	15132	1	CHAIN, 6 LINKS	39	103040	2	SNAP RING
16	101831	1	SPRING				

NOTE: *1, *5 WHEN ORDERING A NEW DISCHARGE, HANGER PLATE, AUGER, AUGER FLIGHTING, BOTTOM, OR LINERS MEASURE DISCHARGE LENGTH. MEASUREMENTS ARE TAKEN FROM UNDER EITHER AUGER, FROM THE BACK PLATE TO THE END (WHERE CHUTE BEGINS). SEE PAGE 34 FOR VISUAL REFERENCE.

*8 SOLD IN SETS ONLY

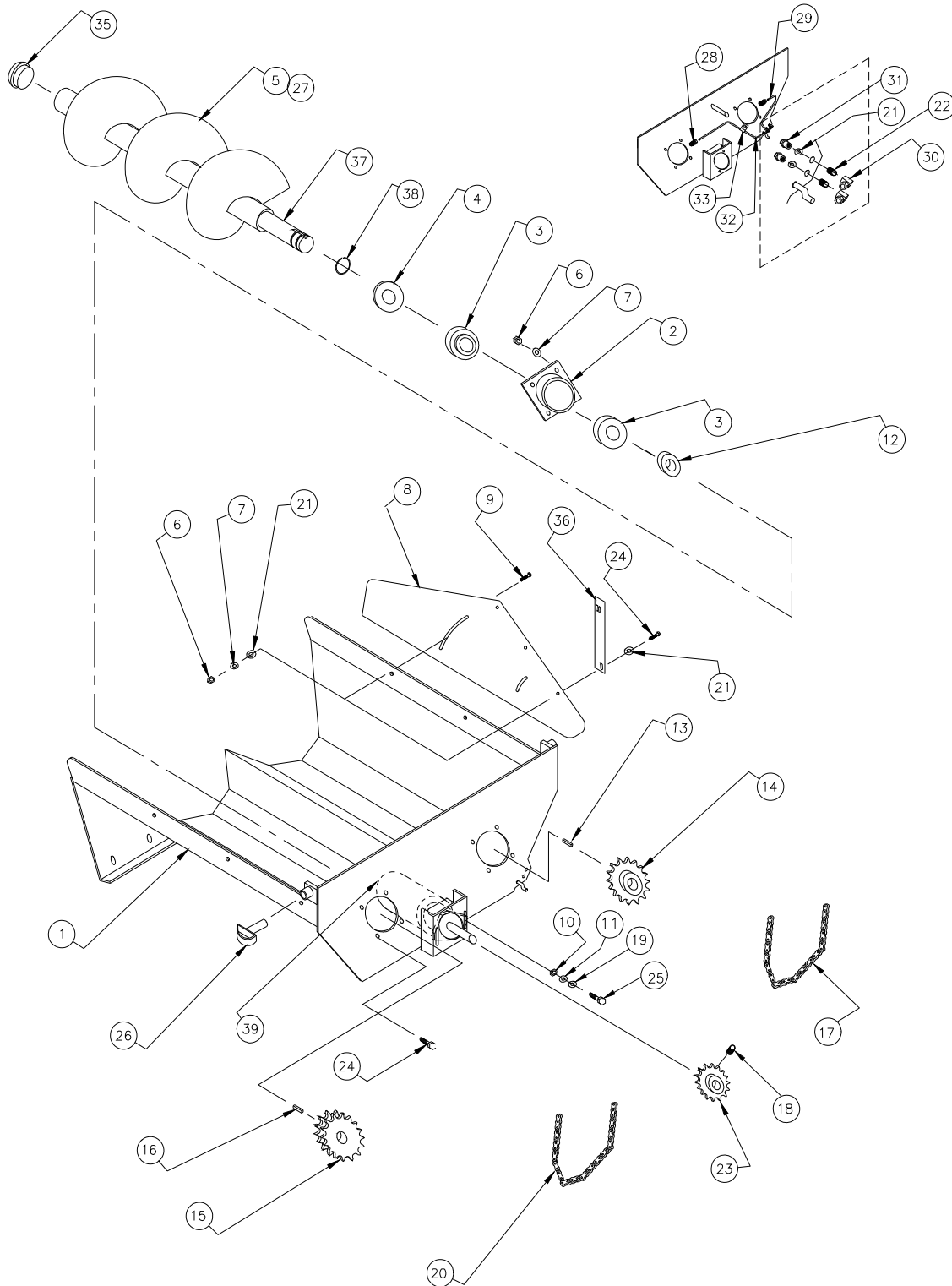
AR - AS REQUIRED

NPN - NO PART NUMBER

NSS - NOT SOLD SEPARATELY

DISCHARGE

DUAL FLAT BOTTOM



DISCHARGE

DUAL FLAT BOTTOM

ITEM	PART #	QTY	DESCRIPTION	ITEM	PART #	QTY	DESCRIPTION
	A17982	1	DISCHARGE ASSY FLT BTM DUAL SHT	15	102778	1	SPROCKET
	A17992	1	DISCHARGE ASSY FLT BTM DUAL MED	16	10983	1	KEY
	A17997	1	DISCHARGE ASSY FLT BTM DUAL EXT	17	102782	1	CHAIN
*1	A17978	1	DISCHARGE BOTTOM ASSY (27.5")	18	100703	6	SET SCREW
*1	A17990	1	DISCHARGE BOTTOM ASSY (34.5")	19	100838	2	FLAT WASHER
*1	A17995	1	DISCHARGE BOTTOM ASSY (42.5")	20	102783	1	CHAIN
2	A14590	2	AUGER BEARING HOUSING	21	100300	18	FLAT WASHER
3	16819	4	BEARING (1 7/16 ID)	22	102798	2	FITTING, 1/8 NPT CLOSE NIPPLE
4	15617	2	BEARING CAP	23	102128	1	SPROCKET
*5	A16619	2	DISCHARGE AUGER (27.5")	24	100240	12	SCREW
*5	A14500	2	DISCHARGE AUGER (34.5")	25	100230	2	SCREW
*5	A15127	2	DISCHARGE AUGER (42.5")	26	A15285	2	PULL PIN, DISCHARGE
6	100254	16	NUT	27	15166	AR	FLIGHTING, (10" PITCH PER FLIGHT)
7	100271	16	LOCK WASHER	28	102759	2	FITTING, STRAIGHT COMP
*8	17958	2	DISCHARGE HANGER (27.5")	29	6060031	1	TUBE, 6 1/2" LONG
*8	17993	2	DISCHARGE HANGER (34.5")	30	102797	2	FITTING 90° COMP. (F)
*8	17998	2	DISCHARGE HANGER (42.5")	31	102454	2	GREASE ZERK (F)
*8	NPN	2	HANGER HALF, WITH HYD. LIFT	32	6060031	1	TUBE, 24" LONG
*8	NPN	2	HANGER HALF, WITH HYD. LIFT	33	102348	1	HOSE MOUNT CLAMP
9	102096	4	SCREW	35	102578	2	CAP, AUGER END
10	100250	2	NUT	36	16078	2	BAR, DISCHARGE SPACER
11	100272	2	LOCK WASHER	37	14502	2	DISCHARGE AUGER SHAFT
12	NSS	2	BEARING LOCK COLLAR	38	103040	2	SNAP RING
13	19083	1	KEY	*39	102980	1	HYDRAULIC MOTOR
14	101845	1	SPROCKET	9952		4	BRG REINFORCING PLT
				101685		2	AUGER SNAP RINGS

NOTE: *1, *5 WHEN ORDERING A NEW DISCHARGE, HANGER PLATE, AUGER, AUGER FLIGHTING, BOTTOM, OR LINERS; MEASURE DISCHARGE LENGTH. MEASUREMENTS ARE TAKEN FROM UNDER EITHER AUGER, FROM THE BACK PLATE TO THE END (WHERE CHUTE BEGINS). SEE PAGE 34 FOR VISUAL REFERENCE.
*39 USE TRW ROSS HYDRAULIC MOTOR # 102980 AS PRIMARY MOTOR. CHAR-LYNN # 101705 MAY BE USED IF NECESSARY.

*8 SOLD IN SETS ONLY

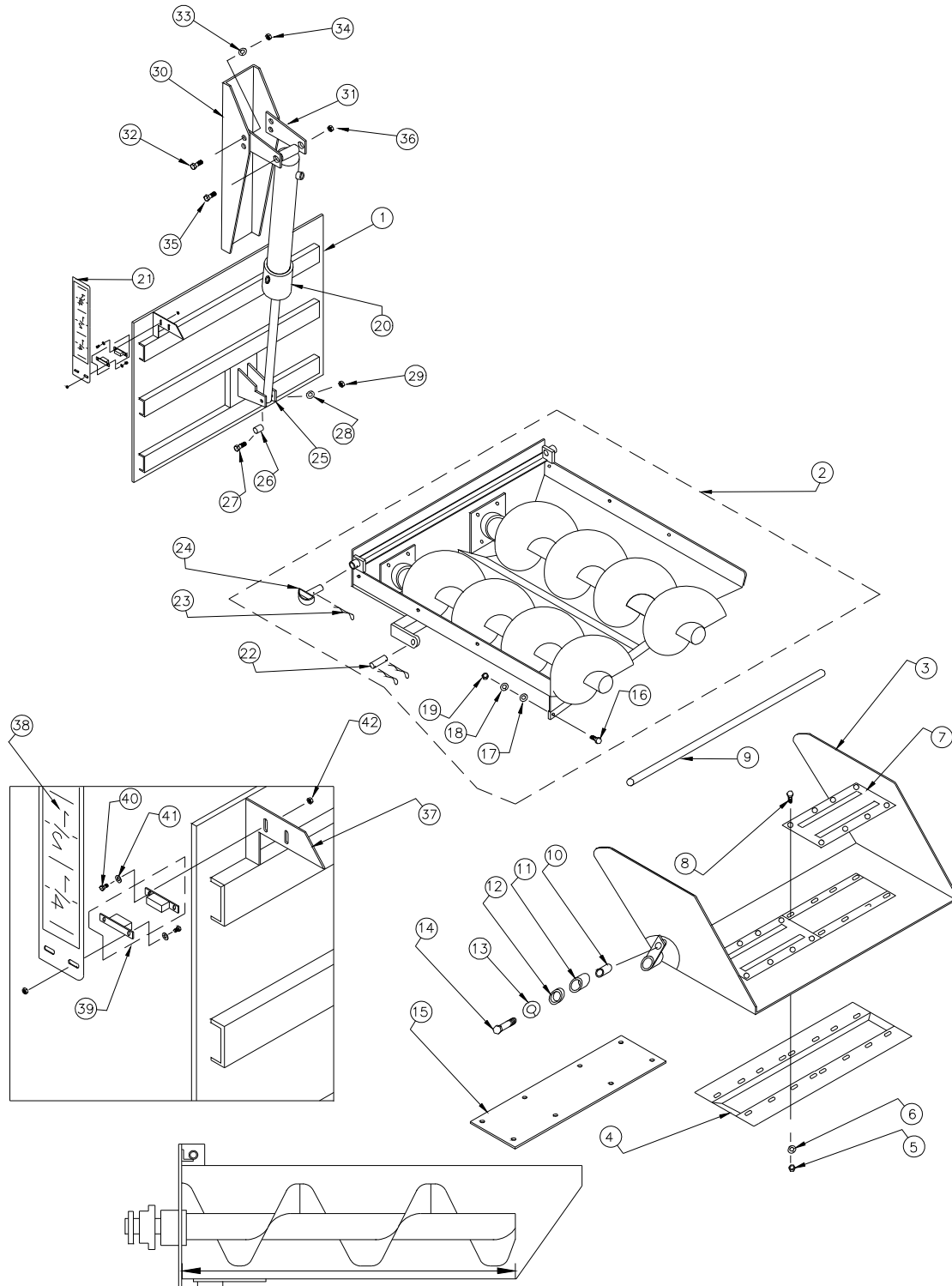
AR - AS REQUIRED

NPN - NO PART NUMBER

NSS - NOT SOLD SEPARATELY

DISCHARGE

DUAL AUGER W/ DOOR ASSEMBLY



DISCHARGE LENGTH IS MEASURED BETWEEN THESE POINTS.

DISCHARGE

DUAL AUGER W/ DOOR ASSEMBLY

ITEM	PART #	QTY	DESCRIPTION	ITEM	PART #	QTY	DESCRIPTION
1	16026	1	DISCHARGE DOOR	22	14533	1	CYLINDER PIN
*2	A17982	1	DISCHARGE ASSY (27.5")	23	101018	4	CLIP, HAIR PIN
*2	A17992	1	DISCHARGE ASSY (34.5")	24	A15285	2	DISCHARGE HINGE PULL PIN
*2	A17997	1	DISCHARGE ASSY (42.5")	25	18291	2	DISCHARGE DOOR CYLINDER MOUNT
3	A17988	1	DROP CHUTE WITH MAGNET GUARD	26	16032	1	BUSHING
4	A15622	1	MAGNET GUARD	27	101895	1	SCREW
5	100297	16	NUT	28	100713	1	FLAT WASHER
6	100170	16	LOCK WASHER	29	100297	2	NUT
7	100985	2	MAGNET 18"	30	19059	1	TUB CYLINDER MOUNT
8	102283	16	SCREW	31	19061	2	BOLT-ON CYLINDER MOUNT
9	14572	1	SHAFT, HINGE	32	100226	4	SCREW
10	14453	1	TUBE, CYL. MNT. HINGE	33	100272	4	LOCK WASHER
11	14573	1	BUSHING LONG	34	100250	4	NUT
12	14574	1	BUSHING SHORT	35	101443	1	SCREW
13	100272	1	LOCK WASHER	36	101009	1	NUT
14	100796	1	SCREW	37	15952	1	DOOR POSITION POINTER
15	16792	1	COVER, MAGNET GUARD	38	101181	1	DOOR GUAGE DECAL, TRUCK
16	100240	7	SCREW	38	101992	1	DOOR GUAGE DECAL, TRAILER
17	100300	7	FLAT WASHER	39	102401	2	MAGNETIC SWITCH
18	100271	7	LOCK WASHER	40	100175	4	SCREW
19	100254	7	NUT	41	102254	4	WASHER
20	A17366	1	DISCHARGE DOOR CYLINDER	42	102253	4	NUT
21	15953	1	BAR, DOOR POSITION				

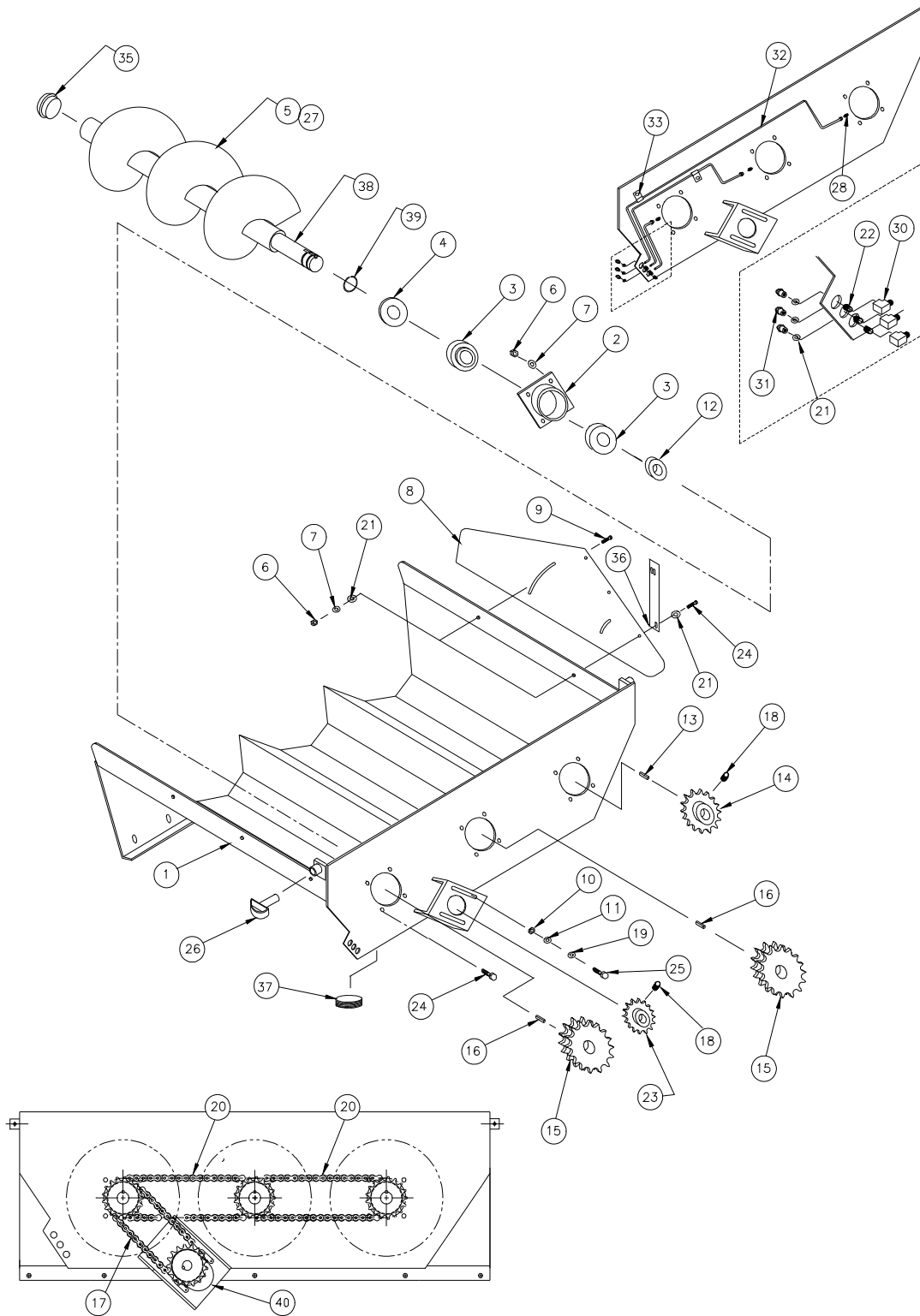
NOTE: *2 WHEN ORDERING A NEW DISCHARGE, HANGER PLATE, AUGER, AUGER FLIGHTING, BOTTOM, OR LINERS; MEASURE DISCHARGE LENGTH. MEASUREMENTS ARE TAKEN FROM UNDER EITHER AUGER, FROM THE BACK PLATE TO THE END (WHERE CHUTE BEGINS). SEE ILLUSTRATION ON PAGE 34.

*2 DISCHARGE INCLUDES CHAINS, SPROCKETS, BEARINGS, AND HYDRAULIC MOTOR (SEE PAGE 33, ITEM 39). IT DOES **NOT** INCLUDE DROP CHUTE CYLINDER (SEE PAGE 42 ITEM 38, OR PAGE 47).

**3 A17988 DROP CHUTE INCLUDES ITEMS 14, 13, 12, 11, 10, 4 AND @ HINGE ASSY A19257

DISCHARGE

TRIPLE AUGER



DISCHARGE

TRIPLE AUGER

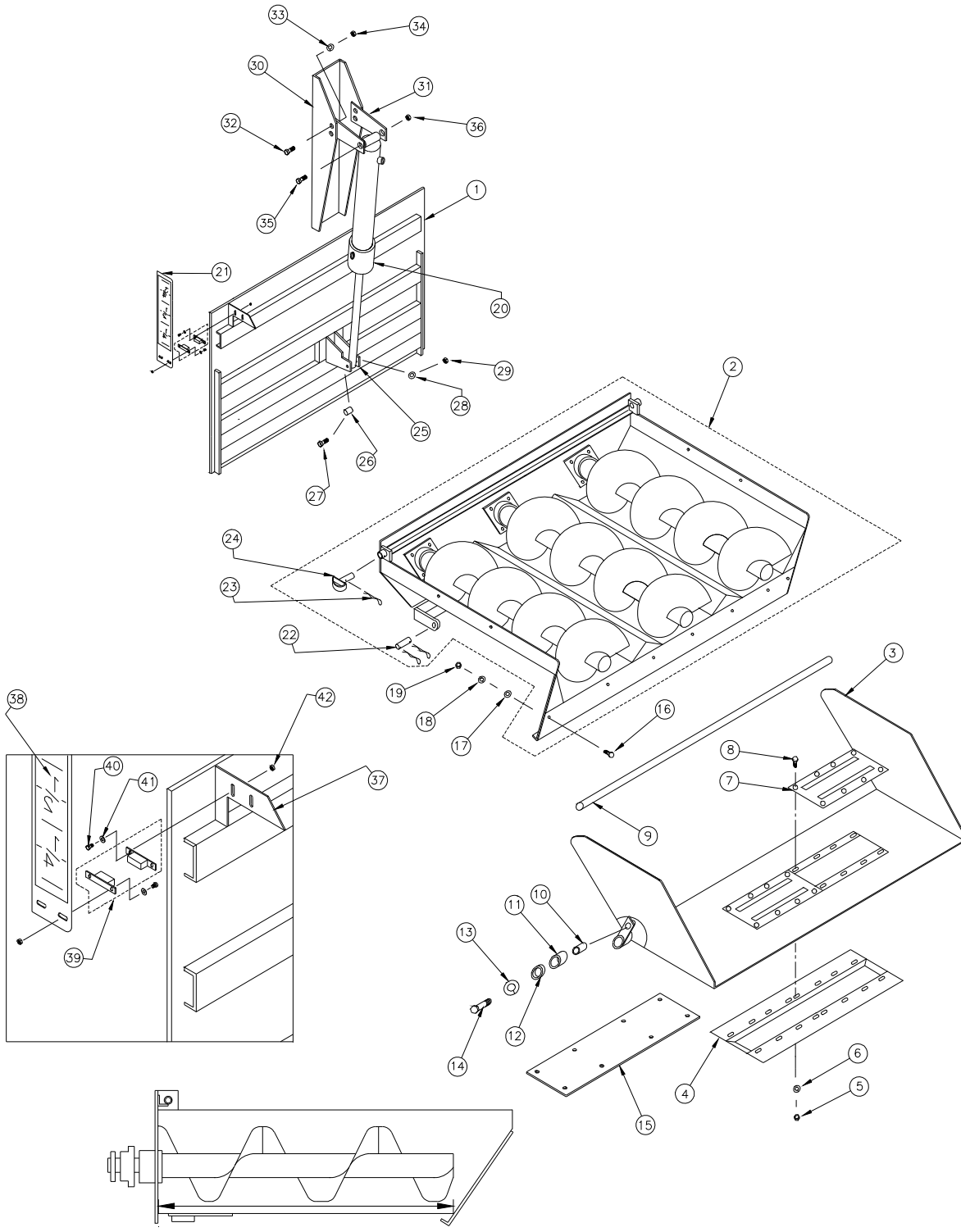
ITEM	PART #	QTY	DESCRIPTION	ITEM	PART #	QTY	DESCRIPTION
	A17902	1	DISCHARGE ASSY FLAT BTM TRPL SHT	15	102778	2	SPROCKET
	A18168	1	DISCHARGE ASSY FLAT BTM TRPL MED	16	10983	2	KEY
	A18169	1	DISCHARGE ASSY FLAT BTM TRPL EXT	17	102765	1	CHAIN
*1	A17899	1	DISCHARGE BOTTOM ASSY (27.5")	18	100703	8	SET SCREW
*1	A18170	1	DISCHARGE BOTTOM ASSY (34.5")	19	100838	2	FLAT WASHER
*1	A18171	1	DISCHARGE BOTTOM ASSY (42.5")	20	102764	2	CHAIN
2	A14590	3	AUGER BEARING HOUSING	21	100300	18	FLAT WASHER
3	16819	6	BEARING (1 7/16 ID)	22	102798	3	FITTING, 1/8 NPT CLOSE NIPPLE
4	15617	3	BEARING CAP	23	102128	1	SPROCKET
*5	A16619	3	DISCHARGE AUGER (27.5")	24	100240	12	SCREW
*5	A14500	3	DISCHARGE AUGER (34.5")	25	100230	2	SCREW
*5	A15127	3	DISCHARGE AUGER (42.5")	26	A15285	2	PULL PIN, DISCHARGE
6	100254	16	NUT	27	15166	AR	FLIGHTING, (10" PITCH PER FLIGHT)
7	100271	16	LOCK WASHER	28	102759	3	FITTING, STRAIGHT COMP
*8	17958	2	DISCHARGE HANGER (27.5")	30	102797	3	FITTING, 90° COMP. (F)
*8	17993	2	DISCHARGE HANGER (34.5")	31	102454	3	GREASE ZERK (F)
*8	17998	2	DISCHARGE HANGER (42.5")	32	6060031	1	TUBE, 6 FT. ALUM.
*8	NPN	2	HANGER HALF, WITH HYD. LIFT	33	102348	2	HOSE MOUNT CLAMP
*8	NPN	2	HANGER HALF, WITH HYD. LIFT	35	102578	3	CAP, AUGER END
9	102096	4	SCREW	36	16078	2	BAR DISCHARGE SPACER
10	100250	2	NUT	37	102078	3	DRAIN PLUG
11	100272	2	LOCK WASHER	38	14502	2	DISCHARGE AUGER SHAFT
12	NSS	2	BEARING LOCK COLLAR	39	103040	2	SNAP RING
13	19083	1	KEY	*40	102980	1	HYDRAULIC MOTOR
14	101845	1	SPROCKET				

NOTE: *1, *5 WHEN ORDERING A NEW DISCHARGE, HANGER PLATE, AUGER, AUGER FLIGHTING, BOTTOM, OR LINERS; MEASURE DISCHARGE LENGTH. MEASUREMENTS ARE TAKEN FROM UNDER ANY AUGER, FROM THE BACK PLATE TO THE END (WHERE CHUTE BEGINS). SEE PAGE 38 FOR VISUAL REFERENCE.
*40 USE TRW ROSS HYDRAULIC MOTOR # 102980 AS PRIMARY MOTOR. CHAR-LYNN # 101705 MAY BE USED IF NECESSARY.

*8 SOLD IN SETS ONLY
AR - AS REQUIRED
NPN - NO PART NUMBER
NSS - NOT SOLD SEPARATELY

DISCHARGE

TRIPLE AUGER W/ DOOR ASSEMBLY



DISCHARGE LENGTH IS MEASURED BETWEEN THESE POINTS.

DISCHARGE

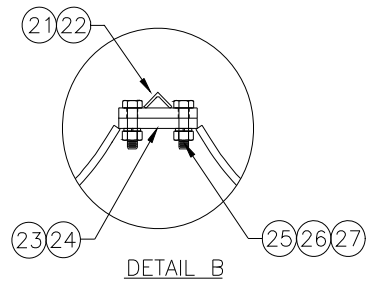
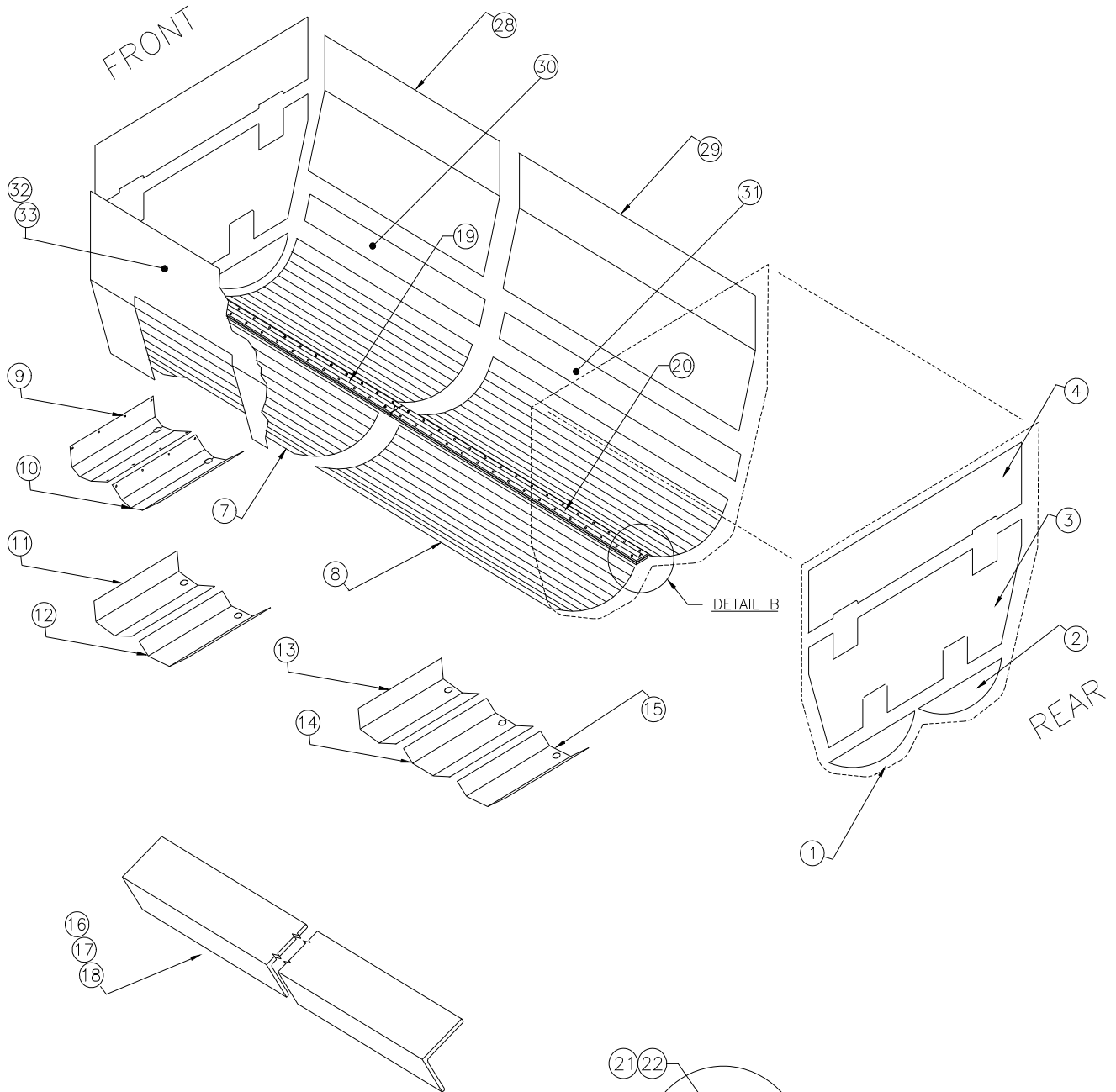
TRIPLE AUGER W/ DOOR ASSEMBLY

ITEM	PART #	QTY	DESCRIPTION	ITEM	PART #	QTY	DESCRIPTION
1	A18110	1	DISCHARGE DOOR	22	14533	1	CYLINDER PIN
*2	A17902	1	DISCHARGE ASSY (27.5")	23	101018	4	CLIP, HAIR PIN
*2	A18168	1	DISCHARGE ASSY (34.5")	24	A15285	2	DISCHARGE HINGE PULL PIN
*2	A18169	1	DISCHARGE ASSY (42.5")	25	18291	2	DISCHARGE DOOR CYLINDER MOUNT
3	A17916	1	DROP CHUTE WITH MAGNET GUARD	26	16032	1	BUSHING
4	A15622	1	MAGNET GUARD	27	101895	1	SCREW
5	100297	16	NUT	28	100713	1	FLAT WASHER
6	100170	16	LOCK WASHER	29	100297	2	NUT
7	100985	2	MAGNET 18"	30	19059	1	TUB CYLINDER MOUNT
8	102283	16	SCREW	31	19061	2	BOLT-ON CYLINDER MOUNT
9	17918	1	SHAFT, HINGE	32	100226	4	SCREW
10	14453	1	TUBE, CYL. MNT. HINGE	33	100272	4	LOCK WASHER
11	14573	1	BUSHING LONG	34	100250	4	NUT
12	14574	1	BUSHING SHORT	35	101443	1	SCREW
13	100272	1	LOCK WASHER	36	101009	1	NUT
14	100796	1	SCREW	37	15952	1	DOOR POSITION POINTER
15	16792	1	COVER, MAGNET GUARD	38	101181	1	DOOR GUAGE DECAL, TRUCK
16	100240	7	SCREW	38	101992	1	DOOR GUAGE DECAL, TRAILER
17	100300	7	FLAT WASHER	39	102401	2	MAGNETIC SWITCH
18	100271	7	LOCK WASHER	40	100175	4	SCREW
19	100254	7	NUT	41	102254	4	WASHER
20	A17366	1	DISCHARGE DOOR CYLINDER	42	102253	4	NUT
21	15953	1	BAR, DOOR POSITION				

NOTE: *2 WHEN ORDERING A NEW DISCHARGE, HANGER PLATE, AUGER, AUGER FLIGHTING, BOTTOM, OR LINERS; MEASURE DISCHARGE LENGTH. MEASUREMENTS ARE TAKEN FROM UNDER ANY AUGER, FROM THE BACK PLATE TO THE END (WHERE CHUTE BEGINS). SEE ILLUSTRATION ON PAGE 38.

*2 DISCHARGE INCLUDES CHAINS, SPROCKETS, BEARINGS, AND HYDRAULIC MOTOR (SEE PAGE 37, ITEM 40). IT DOES **NOT** INCLUDE DROP CHUTE CYLINDER (SEE PAGE 42 ITEM 38, OR PAGE 47).

LINERS AND HAY SHELVES



TUB DIVIDER HARDWARE

LINERS & HAY SHELVES

ITEM	PART #	QTY	DESCRIPTION	ITEM	PART #	QTY	DESCRIPTION
1	A9701	2	END LINER ASSY (STAINLESS STEEL)	*14	18994	1	DISCHARGE LINER CTR (MILD 27.5")
1	A9745	2	END LINER ASSY (MILD STEEL)	*14	18995	1	DISCHARGE LINER CTR (MILD 34.5")
2	9702	4	END LINER, BOTTOM (STAINLESS STEEL)	*14	18996	1	DISCHARGE LINER CTR (MILD 42.5")
2	9748	4	END LINER, BOTTOM (MILD STEEL)	*15	18140	1	DISCHARGE LINER RH (STAINLESS 27.5")
3	9703	2	END LINER, MIDDLE (STAINLESS STEEL)	*15	18178	1	DISCHARGE LINER RH (STAINLESS 34.5")
3	9747	2	END LINER, MIDDLE (MILD STEEL)	*15	18181	1	DISCHARGE LINER RH (STAINLESS 42.5")
4	9704	2	END LINER, TOP (STAINLESS STEEL)	*15	18989	1	DISCHARGE LINER RH (MILD 27.5")
4	9746	2	END LINER, TOP (MILD STEEL)	*15	18991	1	DISCHARGE LINER RH (MILD 34.5")
7	9912	AR	BOTTOM LINER 6 FT. (STAINLESS STEEL)	*15	18993	1	DISCHARGE LINER RH (MILD 42.5")
7	9910	AR	BOTTOM LINER 6 FT. (MILD STEEL)	16	17442	1	HAY SHELF 144" (405)
8	9913	AR	BOTTOM LINER 8 FT. (STAINLESS STEEL)	17	17443	1	HAY SHELF 168" (470)
8	9911	AR	BOTTOM LINER 8 FT. (MILD STEEL)	18	17444	1	HAY SHELF 192" (540)
*9	17244	1	DISCHARGE LINER LH (STAINLESS 27.5")	19	A18575	2	CENTER DIVIDER ASSY 71 7/8" (405)
*9	16347	1	DISCHARGE LINER LH (STAINLESS 34.5")	19	A18575	1	CENTER DIVIDER ASSY 71 7/8" (470)
*9	16534	1	DISCHARGE LINER LH (STAINLESS 42.5")	20	A18574	1	CENTER DIVIDER ASSY 96 7/8" (470)
*9	9569	1	DISCHARGE LINER LH (MILD 27.5")	20	A18574	2	CENTER DIVIDER ASSY 96 7/8" (540)
*9	9464	1	DISCHARGE LINER LH (MILD 34.5")	21	18573	2	ANGLE, CENTER PEAK 71 7/8" (405)
*9	9466	1	DISCHARGE LINER LH (MILD 42.5")	21	18573	1	ANGLE, CENTER PEAK 71 7/8" (470)
*10	17245	1	DISCHARGE LINER RH (STAINLESS 27.5")	22	18572	1	ANGLE, CENTER PEAK 96 7/8" (470)
*10	15815	1	DISCHARGE LINER RH (STAINLESS 34.5")	22	18572	2	ANGLE, CENTER PEAK 96 7/8" (540)
*10	16535	1	DISCHARGE LINER RH (STAINLESS 42.5")	23	18549	2	CENTER BAR 71 7/8" (405)
*10	9570	1	DISCHARGE LINER RH (MILD 27.5")	23	18549	1	CENTER BAR 71 7/8" (470)
*10	9465	1	DISCHARGE LINER RH (MILD 34.5")	24	18467	1	CENTER BAR 95 7/8" (470)
*10	9467	1	DISCHARGE LINER RH (MILD 42.5")	24	18467	2	CENTER BAR 95 7/8" (540)
*11	17999	1	DISCHARGE LINER LH (STAINLESS 27.5")	*25	100230	48	SCREW (405)
*11	18001	1	DISCHARGE LINER LH (STAINLESS 34.5")	*25	100230	56	SCREW (470)
*11	18003	1	DISCHARGE LINER LH (STAINLESS 42.5")	*25	100230	64	SCREW (540)
*11	18998	1	DISCHARGE LINER LH (MILD 27.5")	*26	100272	48	LOCK WASHER (405)
*11	18985	1	DISCHARGE LINER LH (MILD 34.5")	*26	100272	56	LOCK WASHER (470)
*11	18987	1	DISCHARGE LINER LH (MILD 42.5")	*26	100272	64	LOCK WASHER (540)
*12	18000	1	DISCHARGE LINER RH (STAINLESS 27.5")	*27	100250	48	NUT (405)
*12	18002	1	DISCHARGE LINER RH (STAINLESS 34.5")	*27	100250	56	NUT (470)
*12	18004	1	DISCHARGE LINER RH (STAINLESS 42.5")	*27	100250	64	NUT (540)
*12	18997	1	DISCHARGE LINER RH (MILD 27.5")	28	9957	AR	UPPER RIGHT SIDE LINER 6 FT. (STAINLESS)
*12	18984	1	DISCHARGE LINER RH (MILD 34.5")	28	9953	AR	UPPER RIGHT SIDE LINER 6 FT. (MILD)
*12	18986	1	DISCHARGE LINER RH (MILD 42.5")	29	9959	AR	UPPER RIGHT SIDE LINER 8 FT. (STAINLESS)
*13	18119	1	DISCHARGE LINER LH (STAINLESS 27.5")	29	9955	AR	UPPER RIGHT SIDE LINER 8 FT. (MILD)
*13	18176	1	DISCHARGE LINER LH (STAINLESS 34.5")	30	9958	AR	LOWER RIGHT SIDE LINER 6 FT. (STAINLESS)
*13	18179	1	DISCHARGE LINER LH (STAINLESS 42.5")	30	9954	AR	LOWER RIGHT SIDE LINER 6 FT. (MILD)
*13	18988	1	DISCHARGE LINER LH (MILD 27.5")	31	9960	AR	LOWER RIGHT SIDE LINER 8 FT. (STAINLESS)
*13	18990	1	DISCHARGE LINER LH (MILD 34.5")	31	9956	AR	LOWER RIGHT SIDE LINER 8 FT. (MILD)
*13	18992	1	DISCHARGE LINER LH (MILD 42.5")	32	9904	AR	LEFT SIDE LINER 6 FT. (STAINLESS)
*14	18141	1	DISCHARGE LINER CTR (STAINLESS 27.5")	32	9898	AR	LEFT SIDE LINER 6 FT. (MILD)
*14	18177	1	DISCHARGE LINER CTR (STAINLESS 34.5")	33	9905	AR	LEFT SIDE LINER 8 FT. (STAINLESS)
*14	18180	1	DISCHARGE LINER CTR (STAINLESS 42.5")	33	9899	AR	LEFT SIDE LINER 8 FT. (MILD)

NOTE: *9, *10 DUAL AUGER DISCHARGE - FORMED BOTTOM

*11, *12 DUAL AUGER DISCHARGE - FLAT BOTTOM

*13, *14, *15 TRIPLE AUGER DISCHARGE

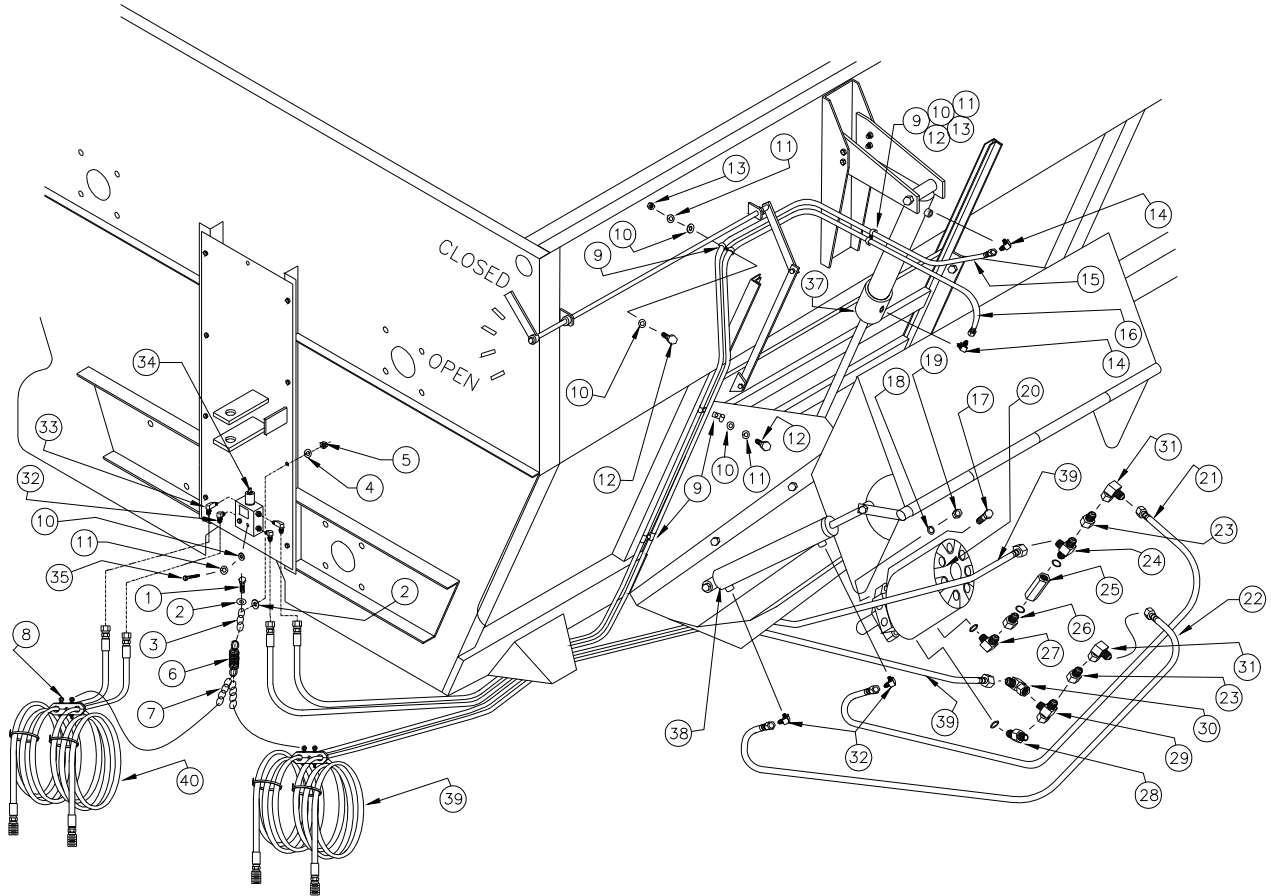
*25, *26, *27 - HARDWARE REQUIREMENTS FOR MOST UNITS ABOVE S/N (405HC0000, 470HC0000, 540HC0000) HAVE BEEN REDUCED; [QTY(405)=24, QTY(470)=28, QTY(540)=32]. VERIFY QUANTITY WHEN ORDERING REPLACEMENT HARDWARE.

WHEN ORDERING NEW DISCHARGE LINERS MEASURE DISCHARGE LENGTH. MEASUREMENTS ARE TAKEN FROM UNDER EITHER AUGER, FROM THE BACK PLATE TO THE END (WHERE DROP CHUTE BEGINS). PLEASE REFER TO PAGE 34 OR 38 FOR VISUAL REFERENCE.

AR - AS REQUIRED

NPN - NO PART NUMBER

TRAILER HYDRAULICS



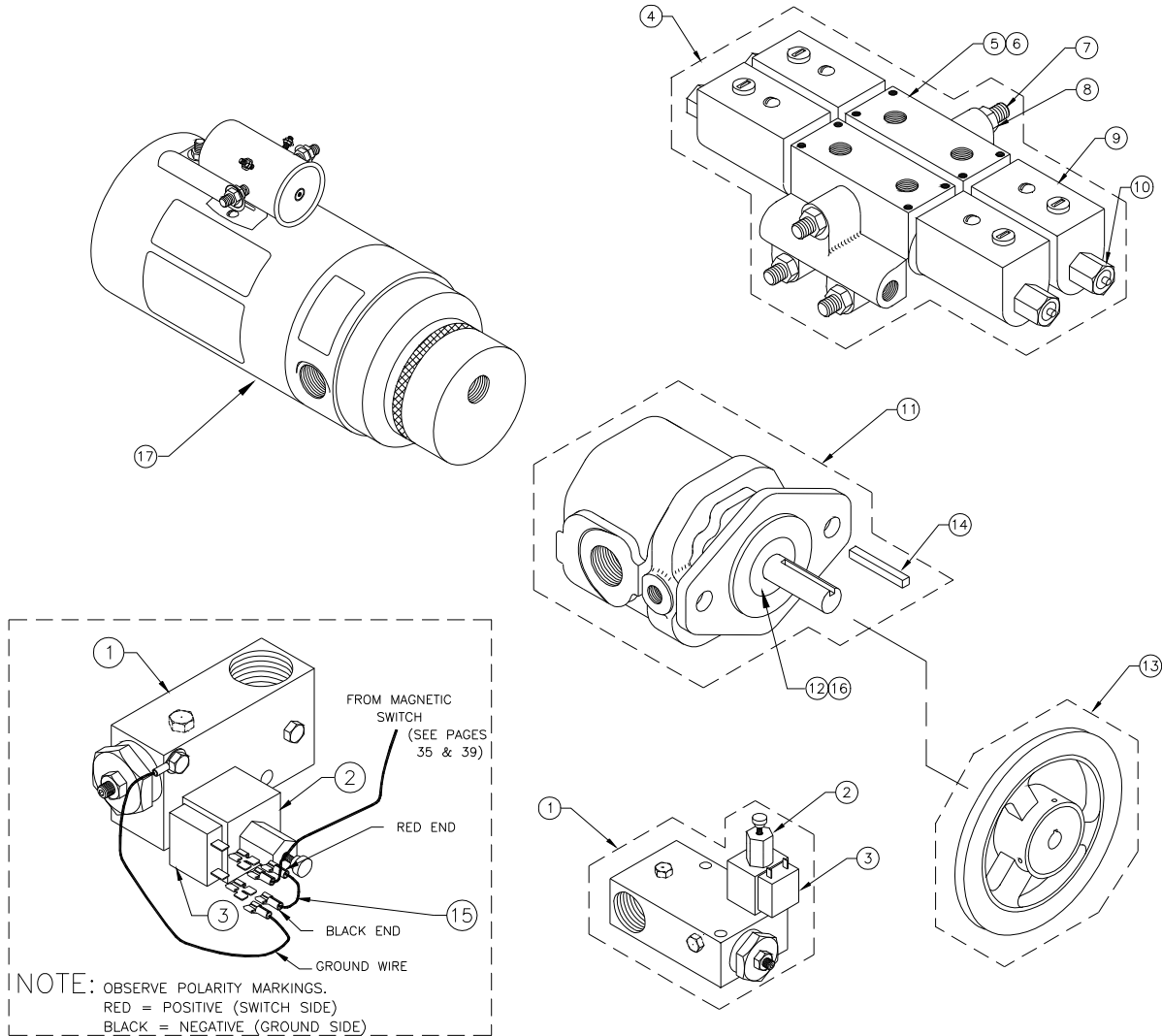
TRAILER HYDRAULICS

ITEM	PART #	QTY	DESCRIPTION
1	100240	1	SCREW
2	100300	2	FLAT WASHER
3	7070514	1	CHAIN 3 LINKS
4	100271	1	LOCK WASHER
5	100254	1	NUT
6	100447	1	SPRING
7	7070514	1	CHAIN 7 LINKS
8	102256	2	DOUBLE HOSE CLAMP
9	NPN	8	HOSE CLAMP (LAWSON 88232)
10	100443	8	FLAT WASHER
11	100304	4	LOCK WASHER
12	101819	4	SCREW
13	100221	2	NUT
14	102484	2	90° ELBOW
*15	NPN	1	10' HOSE 3/8 100R1
*16	NPN	1	12' HOSE 3/8 100R1
17	100226	2	SCREW
18	100272	2	LOCK WASHER
19	100250	2	NUT
*20	102980	1	HYDRAULIC MOTOR

ITEM	PART #	QTY	DESCRIPTION
*21	NPN	1	1/4 x 36" HOSE 3250 psi (560-4)
*22	NPN	1	1/4 x 30" HOSE 3250 psi (560-4)
23	102158	2	ADAPTER
24	102405	1	TEE
25	102404	1	CHECK VALVE
26	102162	1	ADAPTER
27	102403	1	90° ELBOW
28	102161	1	ADAPTER
29	102141	1	TEE
30	102402	1	ELBOW
31	101937	2	ELBOW
32	101642	2	90° ELBOW
33	101241	2	90° ELBOW, LONG NECK
34	102952	1	RELIEF VALVE
35	NPN	2	SCREW (LAWSON 65006)
37	A17366	1	DISCHARGE DOOR CYLINDER
38	A17370	1	DROP CHUTE CYLINDER
*39	102168	2	13' HOSE 1/2 100R16
*40	NPN	2	12' HOSE 3/8 100R1

NOTE: *15, *16, *21, *22, *39, *40 MEASURE THE LENGTH OF EACH HOSE BEFORE ORDERING.
 *15, *16, *40 - 3/8(100R1)2250 PSI; *21, *22 - 1/4(560-4)3250 PSI; *39 - 1/2(100R16)3250 PSI.
 *20 - USE TRW ROSS HYD. MOTOR #102980 AS PRIMARY MOTOR. CHAR-LYNN # 101705 MAY BE USED IF NECESSARY.
 NPN - NO PART NUMBER

HYDRAULIC COMPONENTS



HYDRAULIC COMPONENTS

ITEM PART # QTY DESCRIPTION

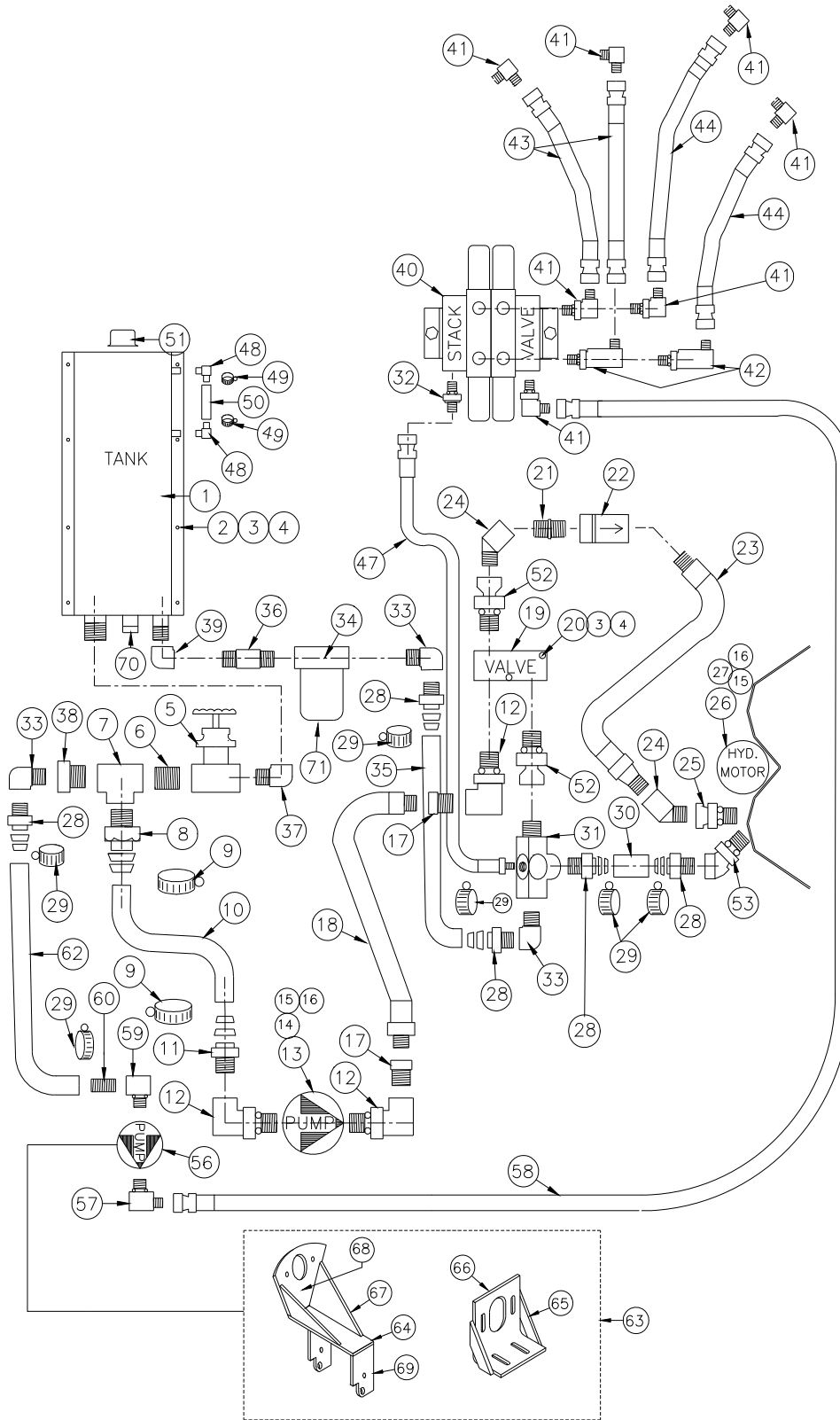
1	102368	1	VALVE (SAME AS 101779)
*2	4411	1	SOLENOID CARTRIDGE
3	4413	1	SOLENOID
4	101240	1	STACK VALVE, 2 SPOOL
4	102347	1	STACK VALVE, 3 SPOOL
5	4405	AR	VALVE BANK
6	4406	AR	SEAL KIT, SINGLE SECTION
7	4407	3	TIE ROD (2 BANKS)
7	4408	3	TIE ROD (3 BANKS)
8	4409	6	NUT

ITEM PART # QTY DESCRIPTION

9	4410	AR	COIL
10	4475	AR	NUT
11	100929	1	AUXILIARY PUMP
12	4461	1	SEAL, SHAFT
13	100916	1	PULLEY, 6" DIA.
14	4484	1	KEY
15	A17538	1	DIODE ASSEMBLY
16	4486	1	BEARING
17	103017	1	AUX. PUMP, ELEC.

NOTE: *2 CARTRIDGE INCLUDES MANUAL OVERRIDE KIT (P/N 4516).
 AR - AS REQUIRED

TRUCK HYDRAULICS



TRUCK HYDRAULICS

ITEM	PART #	QTY	DESCRIPTION	ITEM	PART #	QTY	DESCRIPTION
1	A16970	1	VERTICAL TANK ASSEMBLY	37	100516	1	ELBOW
2	100323	8	SCREW	38	101862	1	BUSHING
3	100304	10	WASHER	39	100980	1	ELBOW
4	100221	10	NUT	40	101240	1	STACK VALVE
5	101852	1	GATE VALVE	41	101642	7	ELBOW
6	101851	1	NIPPLE	42	101241	2	ELBOW
7	101853	1	TEE	43	102087	2	HOSE ASSY (1/4 X 18" LG., #6 JIC [F])
8	100515	1	HOSE BARB	44	17422	2	HOSE ASSY (1/4 X 91" LG., #6 JIC [F])
9	100514	2	HOSE CLAMP	47	A17373	1	HOSE ASSEMBLY
*10	17421	1	SUCTION HOSE, 58"	48	102485	2	ELBOW
11	102240	1	HOSE BARB	49	102486	2	HOSE CLAMP
12	101856	3	ELBOW	50	17060	1	SIGHT TUBE
13	101848	1	PUMP	51	100182	1	CAP BREATHER
14	101444	2	SCREW	52	102457	2	ADAPTER
15	300826C	4	NUT	53	102479	1	ELBOW
16	100272	4	WASHER	*56	100929	1	AUX. PUMP, GEAR
17	101770	2	BUSHING	*56	103017	1	AUX. PUMP, ELEC.
*18	101857	1	HOSE ASSEMBLY, 50"	57	101785	1	ELBOW
19	102368	1	VALVE	*58	101783	1	HOSE ASSEMBLY, 164"
20	100689	2	SCREW	59	101597	1	ELBOW
21	101859	1	NIPPLE	60	100984	1	NIPPLE
22	101860	1	VALVE, CHECK	*62	14881	1	SUCTION HOSE, 132"
23	102095	1	HOSE ASSEMBLY	*63	A9441	1	BRACKETS, AUXILLIARY PUMP
24	102478	2	ELBOW	64	15854	1	PLATE
25	101780	1	ADAPTER	64	11821	1	PLATE
*26	102980	1	HYDRAULIC MOTOR	65	15855	2	BAR, PUMP BRACE
27	300889C	2	SCREW	66	15853	1	PUMP MOUNT ANGLE
28	100831	5	HOSE BARB	67	12182	2	GUSSET
29	100761	6	HOSE CLAMP	68	11870	1	PUMP MOUNT PLATE
30	14877	1	HOSE, RETURN	69	11823	2	MOUNT PLATE
31	17008	1	TEE	70	101674	1	PLUG, TANK
32	101644	1	ADAPTER, #6 SAE - #6 JIC	71	4310	1	REPLACEMENT FILTER, SPIN-ON
33	100941	2	ELBOW	*72	A18267	1	PUMP MOUNT ASSEMBLY
34	101242	1	FILTER ASSEMBLY, INCLUDES HEAD	73	A9558	1	SEAL KIT (FOR 101848)
35	17378	1	HOSE, RETURN	74	4461	1	SEAL (FOR 100929)
36	102516	1	NIPPLE				

NOTE: *10, *18, *58, *62 MEASURE THE LENGTH OF EACH HOSE BEFORE ORDERING.

*26 USE TRW ROSS HYDRAULIC MOTOR # 102980 AS PRIMARY MOTOR. CHAR-LYNN # 101705 MAY BE USED IF NECESSARY.

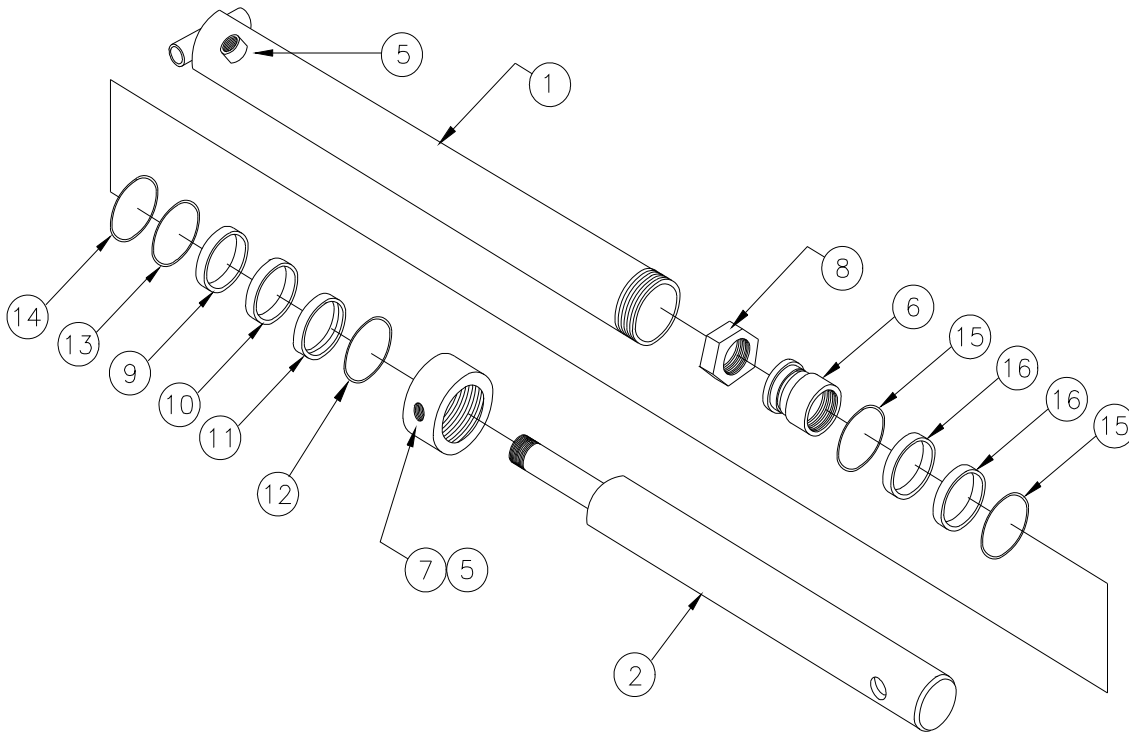
*56 PLEASE SPECIFY TYPE OF PUMP, GEAR DRIVEN OR ELECTRIC.

*63 FOR USE WITH GEAR DRIVEN DISCHARGE CYLINDER (DOOR & DROP CHUTE) HYDRAULIC PUMPS.

*72 FOR MOUNTING ELECTRIC DISCHARGE CYLINDER HYDRAULIC PUMPS (SEE ILLUSTRATION ON P. 14, ITEM 44).

73, 74 - NOT SHOWN

DISCHARGE DOOR CYLINDER



DISCHARGE DOOR CYLINDER

ITEM	PART #	QTY	DESCRIPTION
	A17366	1	CYLINDER ASSY, DIS. DOOR
1	A17365	1	CYLINDER BODY ASSY
2	15116	1	CYLINDER SHAFT
*3	A9252	1	PISTON SEAL KIT
*4	A9409	1	GLAND NUT SEAL KIT
5	101669	2	PIPE PLUG #6 SAE
6	10092	1	PISTON, 2 1/2" DIA.
7	17364	1	GLAND NUT
8	100248	1	NUT, HEX

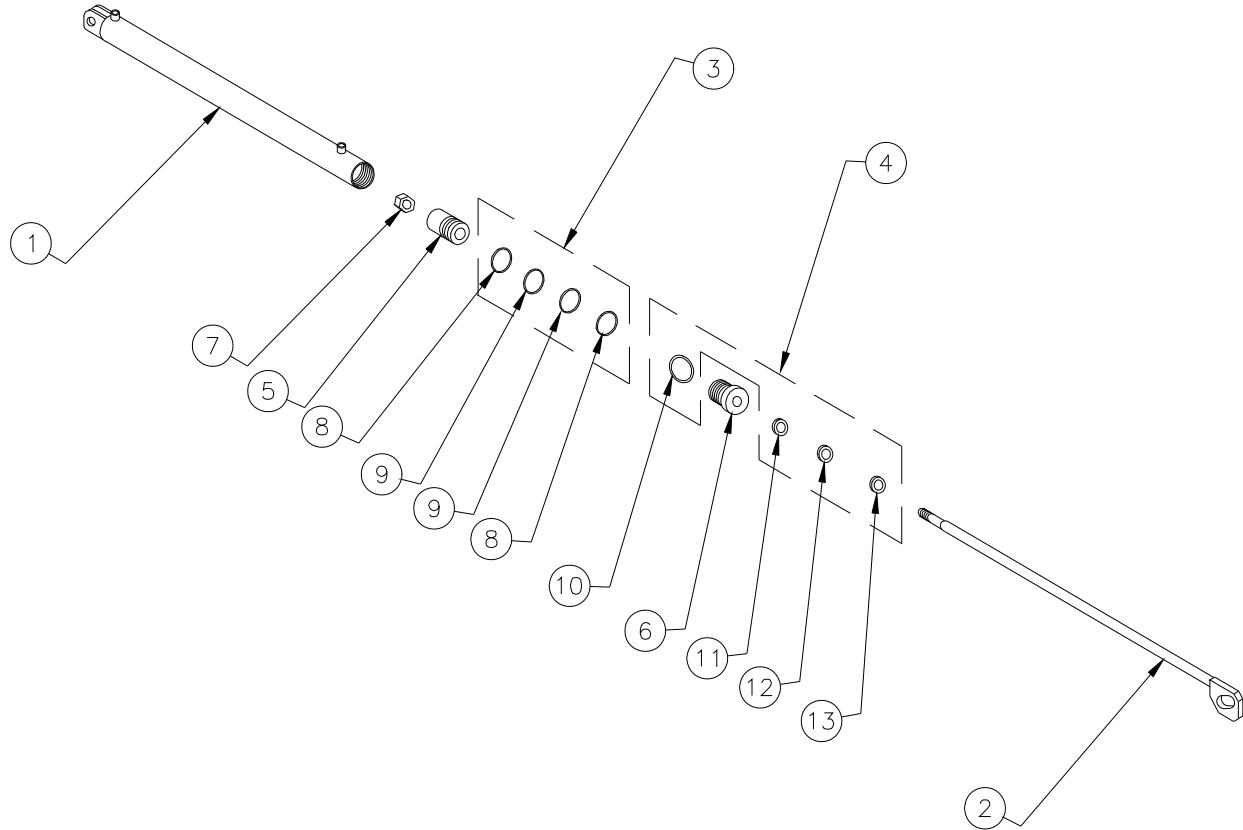
ITEM	PART #	QTY	DESCRIPTION
9	15605	NSS	1 BEARING BUSHING
10	101957	NSS	1 SEAL, POLY
11	15604	NSS	1 WIPER BUSHING
12	100133	NSS	1 WIPER RING
13	100143	NSS	1 RETAINING RING
14	100190	NSS	1 O-RING SEAL
15	100153	NSS	2 O-RING SEAL
16	100732	NSS	2 BACK UP RING

NOTE: *3 INCLUDES ITEMS 15, 16.

*4 INCLUDES ITEMS 9, 10, 11, 12, 13, & 14.

NSS - NOT SOLD SEPARATELY

DROP CHUTE CYLINDER

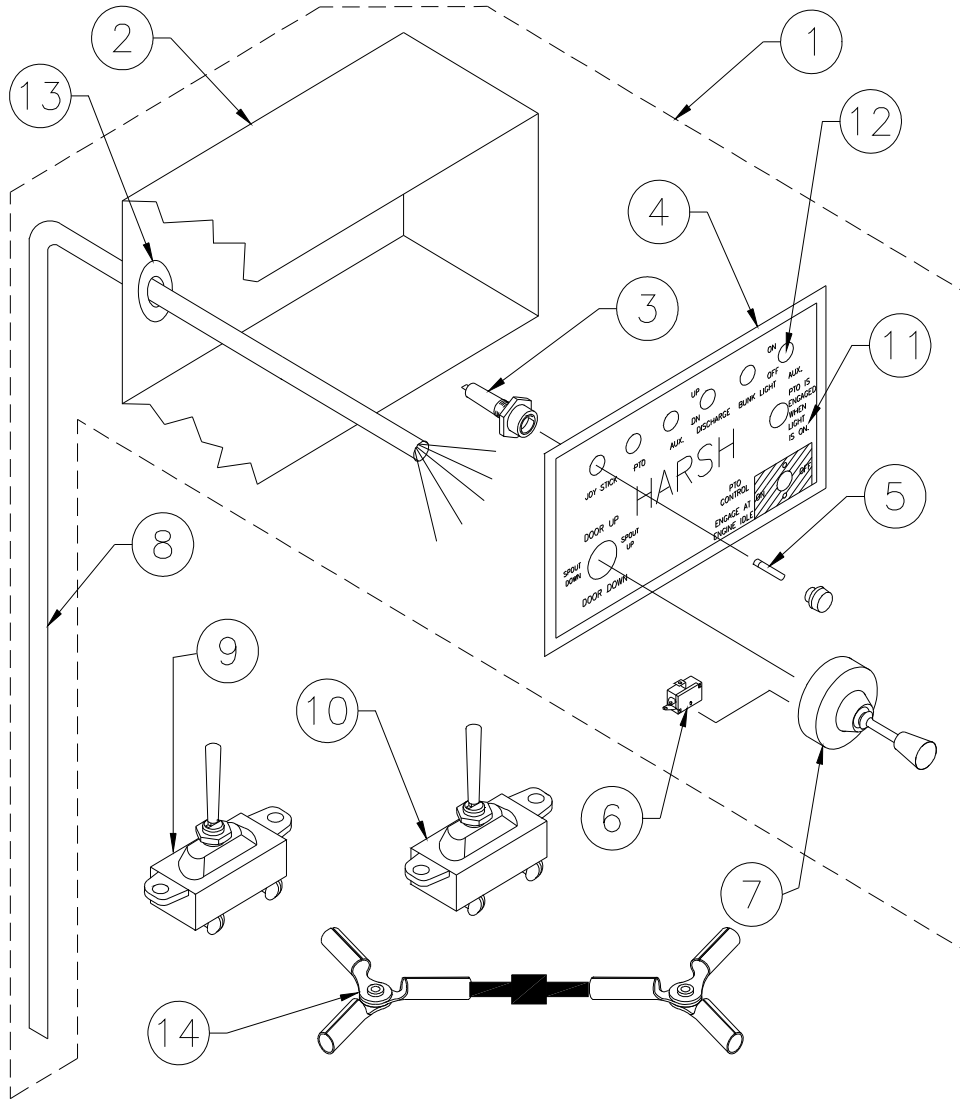


DROP CHUTE CYLINDER

ITEM	PART #	QTY	DESCRIPTION	ITEM	PART #	QTY	DESCRIPTION
	A17370	1	CHUTE CYLINDER ASSEMBLY	7	100248	1	NUT, HEX
1	A17369	1	CYLINDER BODY	8	100153 NSS	2	O-RING
2	A14507	1	CYLINDER SHAFT ASSEMBLY	9	100732 NSS	2	BACK-UP RING
*3	A9252	1	PISTON SEAL KIT	10	100901 NSS	1	O-RING
*4	A9400	1	GLAND NUT SEAL KIT	11	101699 NSS	1	O-RING
5	10092	1	PISTON	12	101698 NSS	1	BACK-UP RING
6	14503	1	GLAND NUT	13	100133 NSS	1	WIPER

NOTE: *3 INCLUDES ITEMS 8, 9.
 *4 INCLUDES ITEMS 10-13.
 NSS - NOT SOLD SEPARATELY

ELECTRIC SWITCHES



ELECTRIC SWITCHES

ITEM PART # QTY DESCRIPTION

*1	A7539	1	CONTROL BOX, JOYSTICK
1	A7456	1	CONTROL BOX, JOYSTICK
2	16781	1	CONTROL BOX, BOTTOM
3	490041	AR	FUSE HOLDER
4	16780	1	CONTROL BOX, LID
5	NPN	AR	FUSE, AGC 10 AMP
6	4404	AR	JOY STICK SWITCH
*7	A17469	1	JOY STICK CONTROL (8 SWITCH)
7	102079	1	JOY STICK CONTROL (4 SWITCH)
8	16399	1	CABLE, 4 CONDUCTOR
*8	17468	1	CABLE, 8 CONDUCTOR

ITEM PART # QTY DESCRIPTION

9	490197	1	PTO SWITCH
10	101324	2	TOGGLE SWITCH
11	102422	1	DECAL, JOY STICK CONTROL BOX
12	102295	AR	PLUG
13	102294	1	GROMMET, CABLE
14	A17539	1	DIODE ASSEMBLY
15	A16110	1	INDICATOR PEDESTAL
16	102328	1	DIGITAL LCD REVOLUTION COUNTER
17	490392	1	REVOLUTION COUNTER MAGNET - top
18	490343	1	REVOLUTION COUNTER MAGNET - bottom

NOTE: AR - AS REQUIRED

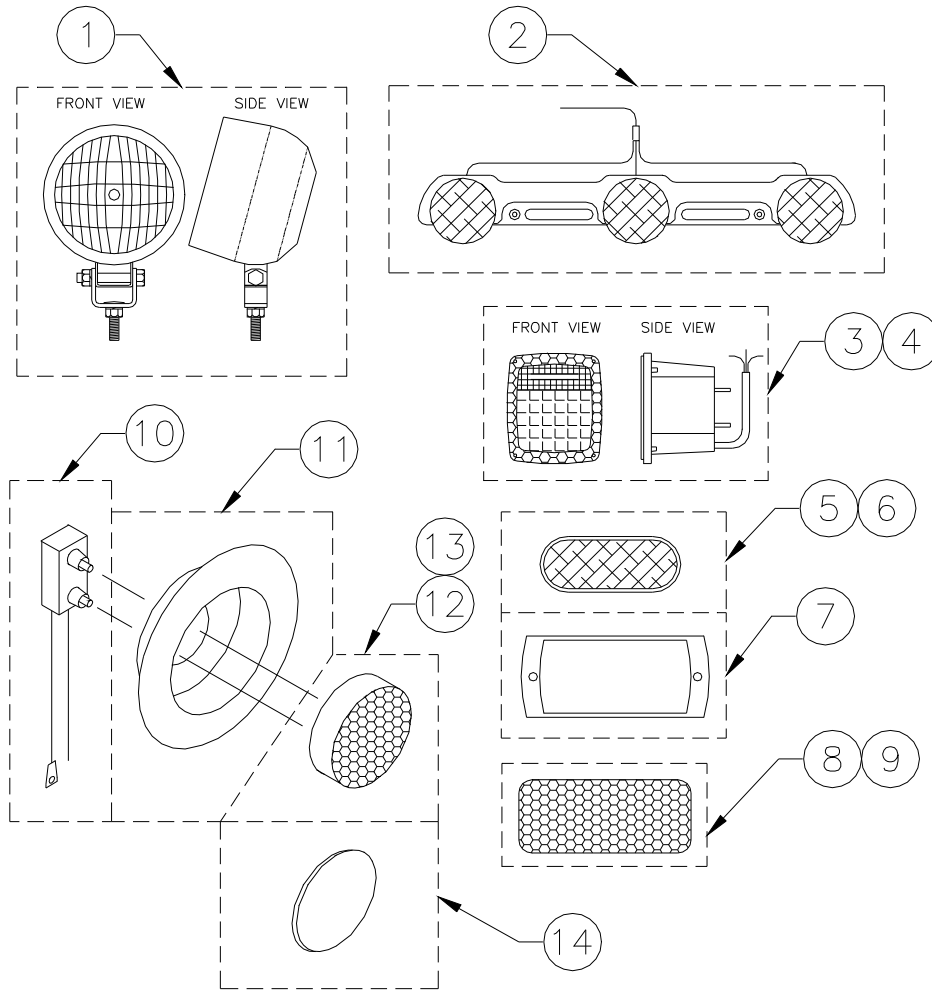
NPN - NO PART NUMBER

*1, *7, & *8 FOR MONARCH PUMP MODEL #628 ONLY.

*7 & 7 JOY STICK CONTROL INCLUDES PART #4404 (JOY STICK SWITCH).

15, 16, 17, 18 - NOT SHOWN

LIGHTS



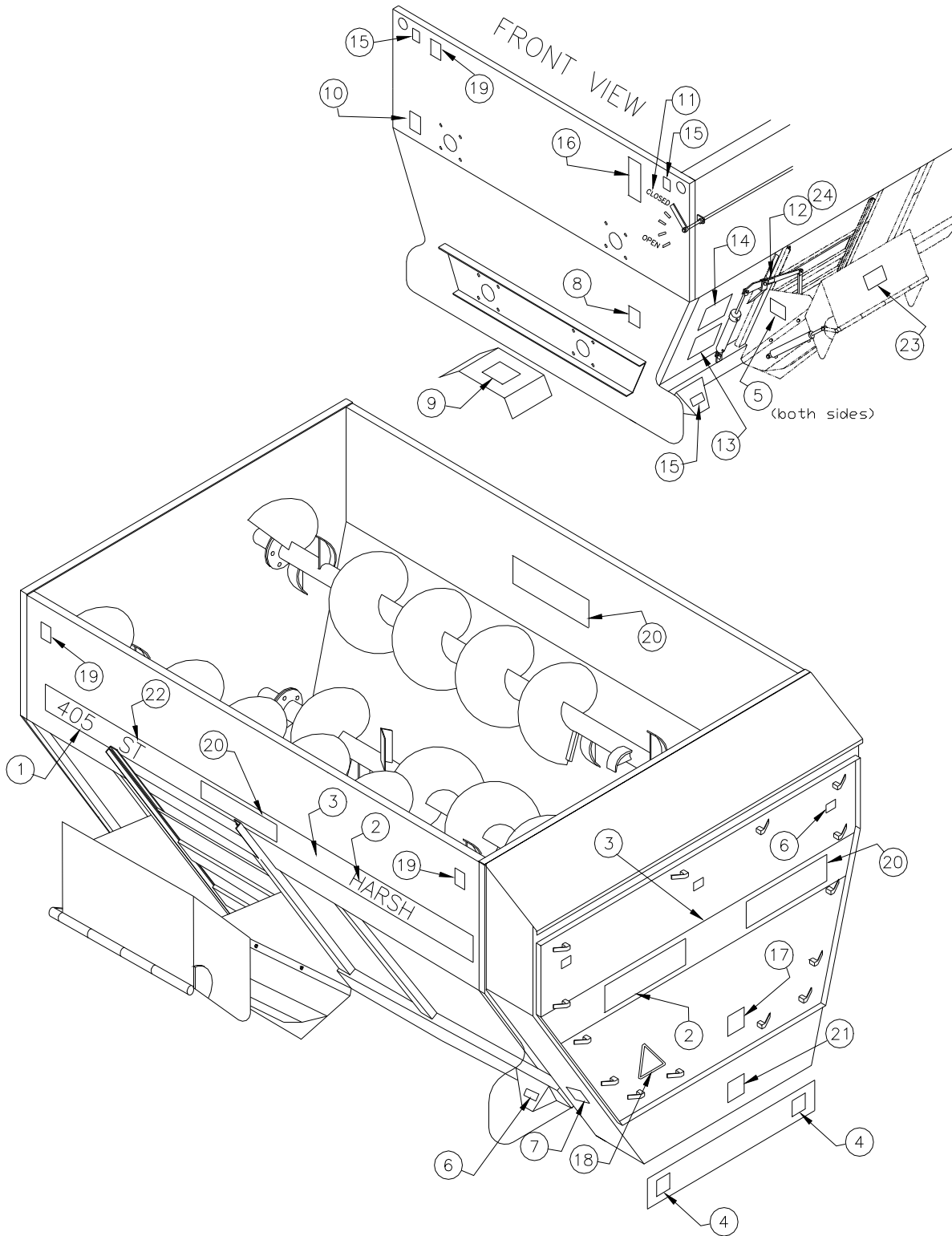
LIGHTS

ITEM	PART #	QTY	DESCRIPTION
1	102439	AR	BUNK LIGHT
2	100335	AR	TRIPLE IDENTIFICATION LIGHT
3	102244	AR	TAIL LIGHT, LEFT
4	102257	AR	TAIL LIGHT, RIGHT
5	102241	AR	CLEARANCE LIGHT, RED
6	102242	AR	CLEARANCE LIGHT, AMBER
7	102243	AR	CHROME GUARD, CLEARANCE LIGHT
8	102361	AR	REFLECTOR, RED
9	102360	AR	REFLECTOR, ORANGE
10	102491	AR	12V PLUG, CLEARANCE LIGHT (FOR GROMMET)
11	102490	AR	GROMMET, CLEARANCE LIGHT (FOR 3" HOLE)
12	102493	AR	CLEARANCE LIGHT, RED (FOR GROMMET)
13	102492	AR	CLEARANCE LIGHT, AMBER (FOR GROMMET)
14	17497	AR	STEEL PLUG (FOR GROMMET - W/O CLEARANCE LIGHT)

NOTE: AR - AS REQUIRED

MIXER DECALS

405 - 470 - 540



MIXER DECALS

ITEM	PART #	QTY	DESCRIPTION	ITEM	PART #	QTY	DESCRIPTION
1	102826	2	405 DECAL	15	102360	4	ORANGE REFLECTOR (TRAILER, STATIONARY)
1	102827	2	470 DECAL	*16	102071	1	DANGER DO NOT ENTER
1	102828	2	540 DECAL	17	102370	1	DO NOT OPERATE W/O SHIELD
2	102549	3	HARSH, SIDE & REAR DOOR DECAL	18	102556	1	SLOW MOVING VEHICLE (TRAILER)
3	102546	35'	RED STRIPE, SIDE 405	*19	102777	5	TUB GUARD DECAL
3	102546	39'	RED STRIPE, SIDE 470	20	102306	3	DECAL, HIGH ROUGHAGE
3	102546	43'	RED STRIPE, SIDE 540	21	102776	1	GEARBOX SPROCKET ROTATION
4	102097	2	NO LIFT DECAL (TRAILER)	22	102548	2	DECAL, WHITE, ST (STATIONARY)
5	103085	2	DECAL, SIDE DISCHARGE	23	103084	1	DECAL, DROP CHUTE DOOR
6	102361	2	RED REFLECTOR (TRUCK)	24	103083	1	DECAL, DISCHARGE DOOR ARM
6	102361	5	RED REFLECTOR (TRAILER, STATIONARY)	*25	103086	12	DECAL, ROTATING DRIVELINE
7	102070	1	OIL BATH MAINTENANCE	**	A9582	1	405 DECAL KIT (TRUCK)
8	102874	1	DECAL, OFF-ROAD USE (TRAILER)	**	A9583	1	405 DECAL KIT (TRAILER)
9	102358	1	DANGER, DRIVE LINE	**	A9919	1	405 DECAL KIT (STATIONARY)
10	102107	1	DANGER, DRIVE LINE 540 RPM - 6 SPLINE	**	A9584	1	470 DECAL KIT (TRUCK)
10	102108	1	DANGER, D/L 1000 RPM - 21 SPLINE	**	A9585	1	470 DECAL KIT (TRAILER)
10	102579	1	DANGER, D/L 1000 RPM - 20 SPLINE	**	A9922	1	470 DECAL KIT (STATIONARY)
11	101992	1	DOOR MARKER, TRAILER	**	A9586	1	540 DECAL KIT (TRUCK)
12	101181	1	DOOR MARKER, TRUCK	**	A9587	1	540 DECAL KIT (TRAILER)
13	102069	1	MAINTENANCE	**	A9924	1	540 DECAL KIT (STATIONARY)
14	102109	1	CAUTION, BEFORE WELDING	**	A9595	1	SAFETY DECAL KIT (MIXERS)
15	102360	2	ORANGE REFLECTOR (TRUCK)	**	A9915	1	SAFETY DECAL KIT (STATIONARY)

NOTE: *16 INSTALL NEXT TO LADDER.

*19 TO BE INSTALLED ON MIXERS EQUIPPED WITH TUB GUARD OPTION (PAGE 54).

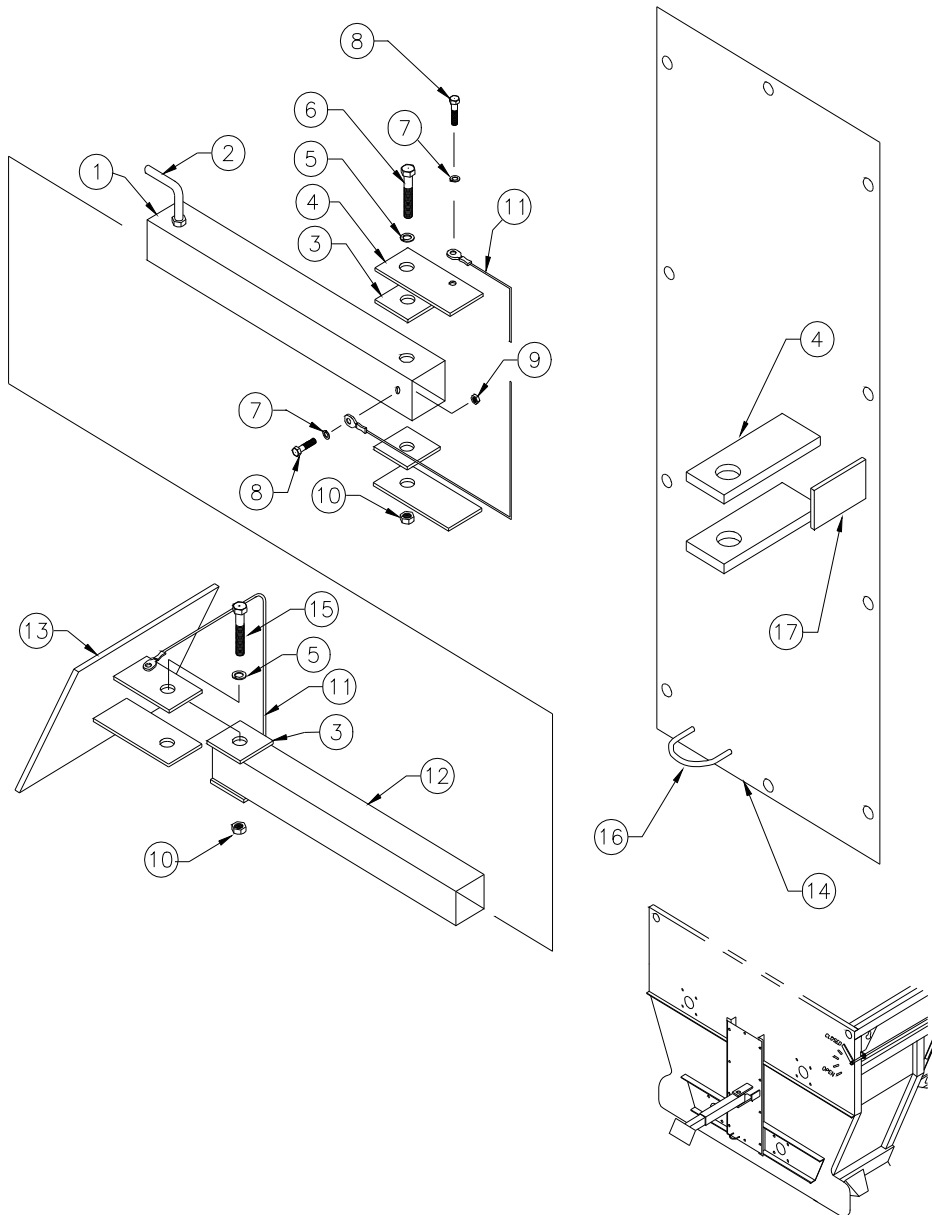
*25 APPLY IN VISIBLE LOCATION TO GTD COVER AND ALL SUBFRAME SUPPORTS (STATIONARY MIXERS ONLY).

**DECALS INCLUDED IN DECAL KITS ARE EQUAL TO DECALS ATTACHED TO MIXER AT THE TIME OF SHIPMENT.

DECALS NOT AVAILABLE SEPERATELY...PURCHASE BY KIT ONLY

HARSH ENCOURAGES THE REPLACEMENT OF ALL SAFETY DECALS WHEN THEY BECOME UNREADABLE, DAMAGED, OR IF THE UNIT IS REPAINTED. IN ORDER TO ASSURE MIXERS ARE COMPLETELY REDECALED WITH ALL THE NECESSARY SAFETY DECALS, THEY ARE INCLUDED IN THE TRUCK AND TRAILER DECAL KITS. IF YOU DO NOT DESIRE TO PURCHASE THE COMPLETE MIXER DECAL KIT, YOU CAN PURCHASE ONLY THE SAFETY DECAL KIT WHICH WILL PROVIDE YOU WITH THE SAFETY AND OPERATION DECALS ONLY.

SWING ARM

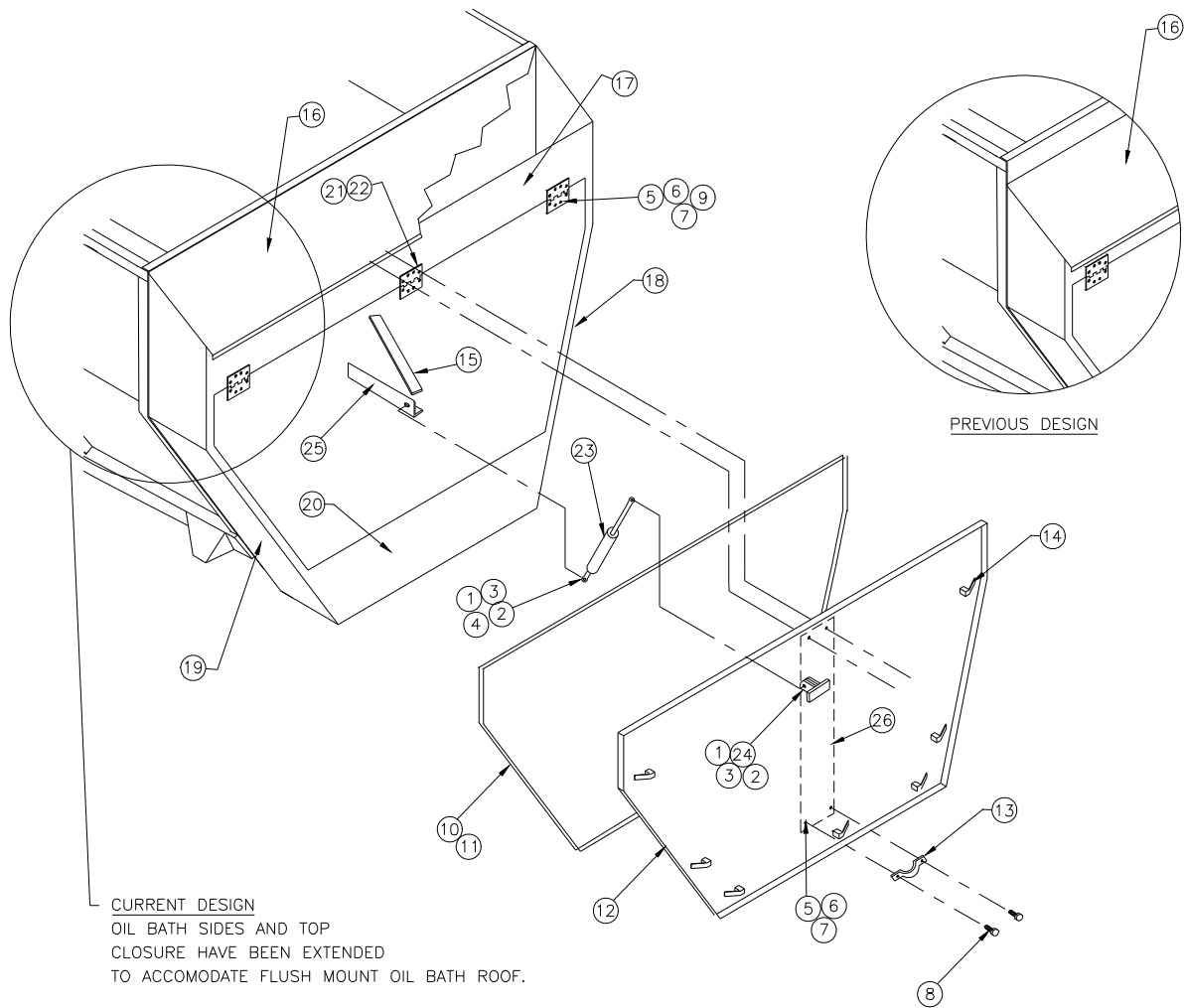


SWING ARM

ITEM	PART #	QTY	DESCRIPTION
1	A15320	1	INDICATOR MNT TUBE ASSEMBLY
2	101902	1	HANDLE, SET SCREW
3	15318	4	FRICTION PAD
4	15319	2	CLEVIS, WELD ON
5	100272	2	LOCK WASHER
6	101811	1	SCREW
7	100304	4	LOCK WASHER
8	101819	4	SCREW
9	100221	4	NUT
10	300826	2	NUT

ITEM	PART #	QTY	DESCRIPTION
11	A16362	2	GROUNDING STRAP
12	15316	1	EXTENSION TUBE
13	A15315	1	EXTENSION ASSEMBLY EATON
13	A16059	1	EXTENSION ASSEMBLY J-STAR
13	A19182	1	EXTENSION ASSEMBLY OMNI
14	A17067	1	INDICATOR MNT PLATE ASSEMBLY
15	300899	1	SCREW
16	100535	1	D-RING
17	17070	1	BAR, SWING ARM STOP

REAR OIL BATH & DOORS

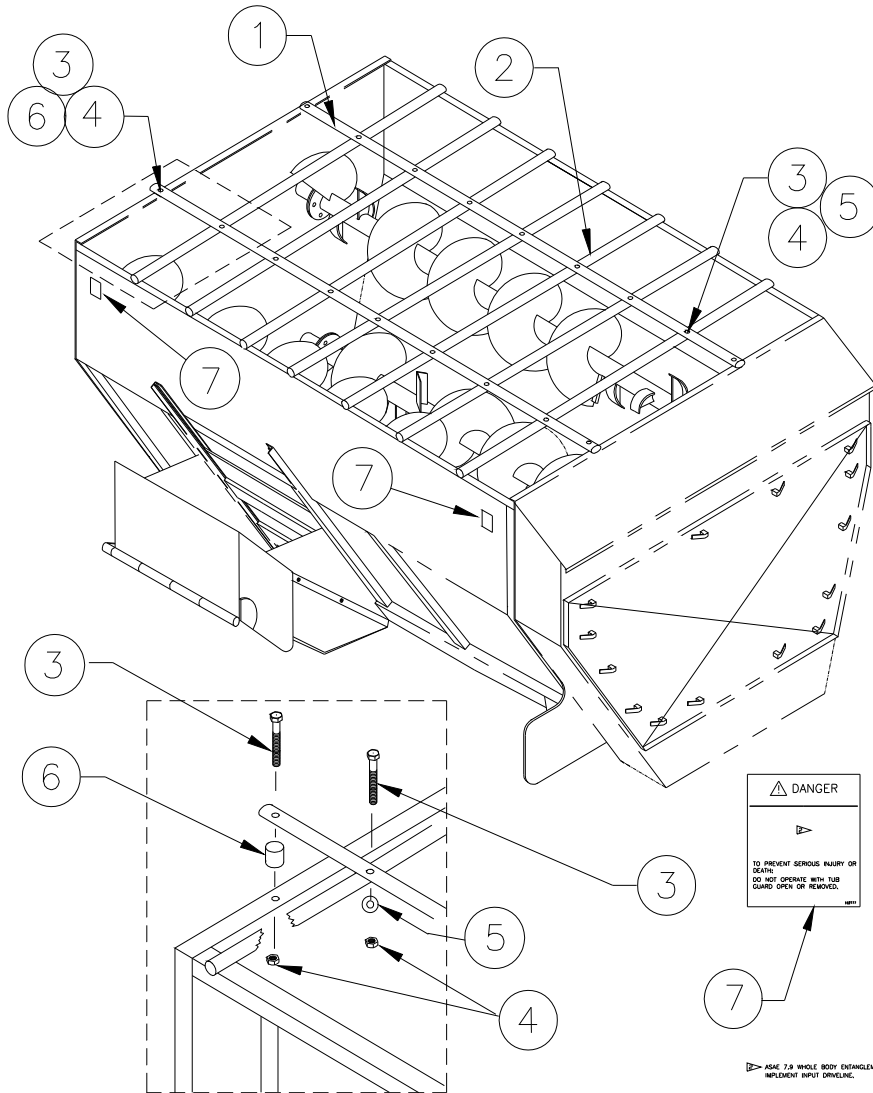


REAR OIL BATH & DOORS

ITEM	PART #	QTY	DESCRIPTION	ITEM	PART #	QTY	DESCRIPTION
1	100240	2	SCREW, HEX HD CAP	16	18961	1	OIL BATH ROOF
2	101985	2	NUT, LOCK	*16	15992	1	OIL BATH ROOF
3	100300	6	WASHER, FLAT	17	18960	1	OIL BATH TOP CLOSURE
4	100254	1	NUT, HEX	*17	18460	1	OIL BATH TOP CLOSURE
5	100221	26	NUT	18	18958	1	OIL BATH SIDE, RIGHT
6	100304	26	LOCK WASHER	*18	18462	1	OIL BATH SIDE, RIGHT
7	100443	26	WASHER, FLAT	19	18959	1	OIL BATH SIDE, LEFT
8	100323	2	SCREW	*19	18463	1	OIL BATH SIDE, LEFT
9	101248	24	SCREW	20	18461	1	OIL BATH BOTTOM CLOSURE
*10	102481	6.5'	SEAL, FLEXIBLE DOOR 1/4	21	102446	3	HINGE
*11	102477	13'	SEAL, FLEXIBLE DOOR 1/8	22	17026	3	HINGE BACK PLATE
*12	18464	1	OIL BATH DOOR	23	102451	1	STRUT, GAS CHARGED SUPPORT
13	102779	1	HANDLE, OIL BATH DOOR	24	A17927	1	STRUT MOUNT ASSY
14	101305	7	LATCH	25	18262	1	ANGLE, STRUT MOUNT
15	18261	1	BAR, STRUT MOUNT BRACE	26	18473	1	CHANNEL, FORMED DOOR BRACE

NOTE: *10 - TO BE USED ON TOP OF DOOR OPENING.
 *11 - TO BE USED ON SIDES AND BOTTOM OF DOOR OPENING.
 *12 - MEASURE EXISTING DOOR BEFORE ORDERING REPLACEMENT.
 16, 17, 18, 19 - USED ON ALL UNITS S/N (405HB9000, 470HB9000, 540HB9000) AND ABOVE.
 *16, *17, *18, *19 - PREVIOUS DESIGN, USED ON UNITS UP TO S/N (405HB8000, 470HB8000, 540HB8000). CHECK MIXER IF S/N IS BETWEEN (405HB8000, 470HB8000, 540HB8000) AND (405HB9000, 470HB9000, 540HB9000).

TUB GUARD



TUB GUARD

ITEM PART # QTY DESCRIPTION

*	A18273	1	TUB GUARD ASSEMBLY (405)
*	A18274	1	TUB GUARD ASSEMBLY (470)
*	A17462	1	TUB GUARD ASSEMBLY (540)
1	17253	2	PIPE, TUB GUARD 144" LG. (405)
1	17254	2	PIPE, TUB GUARD 168" LG. (470)
1	17255	2	PIPE, TUB GUARD 192" LG. (540)
2	17249	7	PIPE, TUB GUARD 83 3/4" LG. (405)
2	17249	9	PIPE, TUB GUARD 83 3/4" LG. (470)
2	17249	11	PIPE, TUB GUARD 83 3/4" LG. (540)
3	102127	18	SCREW, HEX HEAD CAP (405)

ITEM PART # QTY DESCRIPTION

3	102127	22	SCREW, HEX HD CAP (470)
3	102127	26	SCREW, HEX HD CAP (540)
4	102574	18	NUT, HEX NY-LOCK (405)
4	102574	22	NUT, HEX NY-LOCK (470)
4	102574	26	NUT, HEX NY-LOCK (540)
5	100713	18	WASHER, FLAT (405)
5	100713	22	WASHER, FLAT (470)
5	100713	26	WASHER, FLAT (540)
6	17256	4	PIPE, GUARD SPACER 3/4 LG.
*7	102777	5	DECAL, TUB GUARD

NOTE: *TUB GUARD ASSEMBLIES INCLUDE ALL PARTS SHOWN.
*7 ALSO SHOWN ON PAGE 50-1, (ITEM 19).