



MOBILE MIXERS

PARTS MANUAL

900 - 20Z30

FEEDLOT, HAYSIZOR,
HYDROSTATIC DRIVE,
STATIONARY, & TRUCK MODELS

Serial number up to _____

Harsh International, Inc.
600 Oak Ave.
Eaton, CO 80615-0007
(970) 454-2291
Fax: (970) 454-3491

Price: \$2.50

Parts book number: **103093**

PARTS ORDERING INFORMATION

To assure continued safe and efficient operation and to maintain the validity of your warranty use only genuine Harsh replacement parts. To obtain the correct parts for your mixer contact the nearest Harsh equipment dealer in your area. If no Harsh dealer is available, contact Harsh International Inc., 600 Oak Avenue, Eaton, CO 80615, (970) 454-2291.

When ordering parts, be sure to know the Model and Serial numbers of the machine. For the quickest service when ordering by phone, be prepared to state the part number and description as well as the Parts Manual part number, the page number and item number of the part(s) you are ordering.

Always have repairs performed by qualified Service Personnel from your Harsh dealer.

All information, illustrations and specifications contained in this manual are based on the latest product information available at the time of printing.

Harsh International, Inc. reserves the right to make changes to manuals, parts or assemblies at any time without prior notice.

REPLACEMENT MANUALS

Replacement or extra Operator's Manuals and Parts Manuals are available from Harsh or contact your local dealer.

All Operator's Manuals and Parts Manuals are ordered by Model number and Serial number of **your** unit.

There is a nominal cost for each manual ordered.

!!!! IMPORTANT !!!!

Before attempting to operate, inspect, adjust, repair or replace any part of your machine be sure to be thoroughly familiar with your Operator's Manual and observe all safety notices; both printed in the manual and on decals located on the machine.

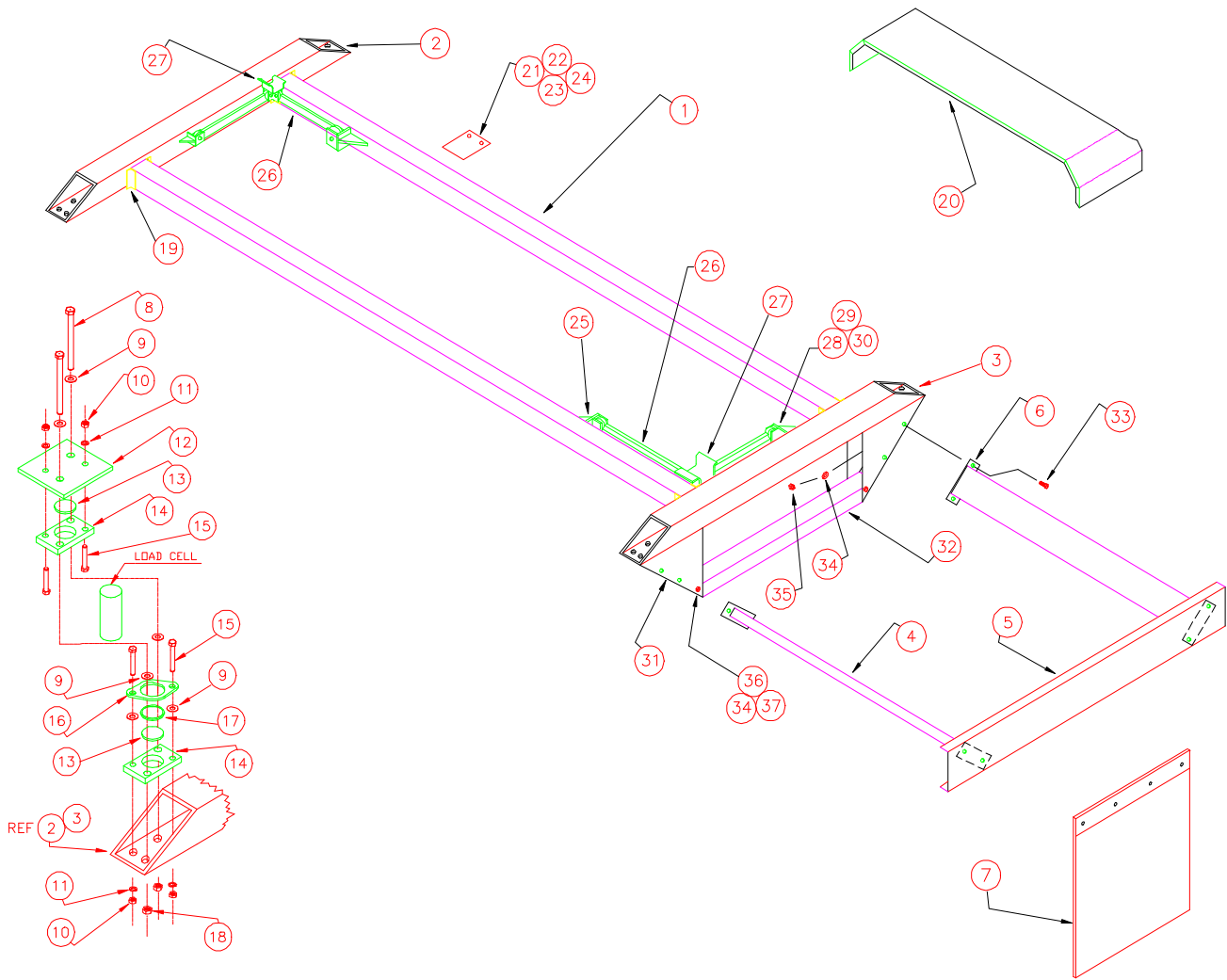
**FAILURE TO OBSERVE THESE SAFETY RULES COULD RESULT IN
SERIOUS INJURY AND/OR PROPERTY DAMAGE!**

INDEX

GROUPS	PAGE NO.
AUGER ASSEMBLY	10-13
DISCHARGE	18-21
DISCHARGE DOOR CYLINDER	30
DROP CHUTE CYLINDER	31
ELECTRICAL SWITCHES	32
HYDRAULIC COMPONENTS	26
HYDROSTATIC DRIVE COMPONENTS	8,9
LIGHTS	33
LINERS	22-25
MIXER DECALS	34,35
REAR DRIVE ASSEMBLY	14-17
REAR OIL BATH AND DOOR	36,37
SUB FRAME, TRUCK	4,6-7
TRUCK HYDRAULICS	28,29
TUB GUARD	38

SUB FRAME TRUCK

NOTE: FOR UNITS WITH SERIAL NUMBERS ABOVE 900HB8000, PLEASE REFER TO PAGE 6-7.

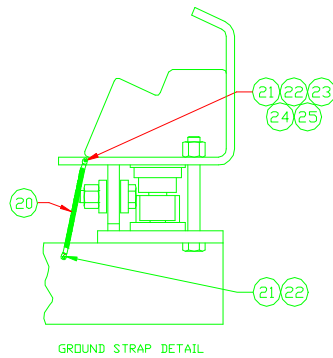
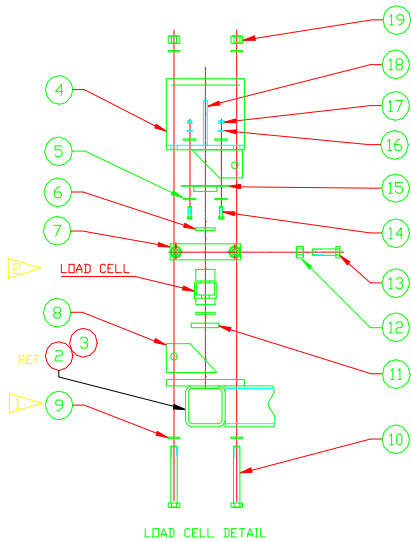
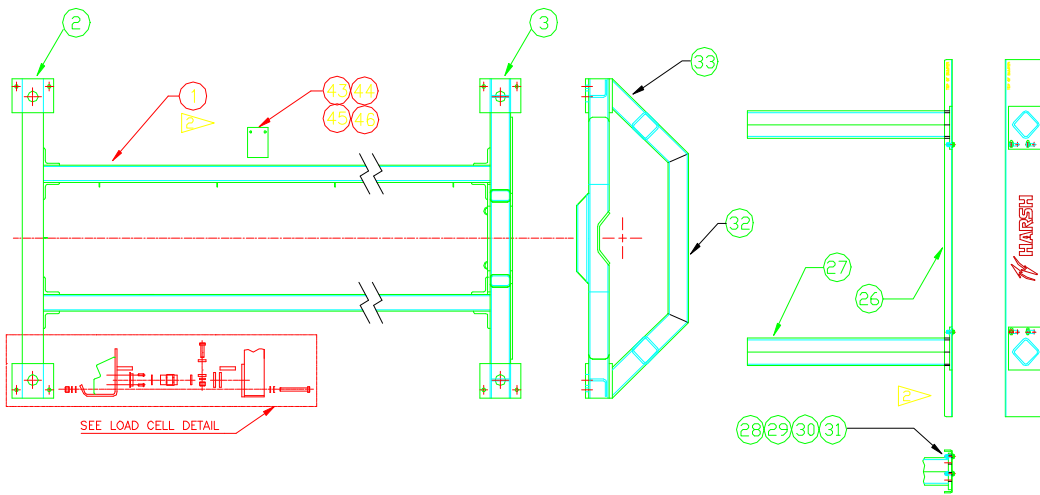
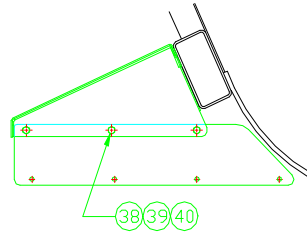
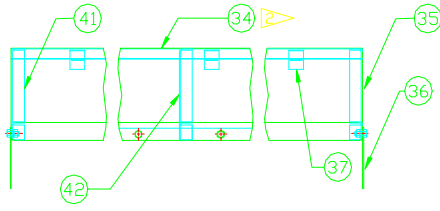


LOAD CELL DETAIL

SUB FRAME TRUCK

ITEM	PART #	QTY	DESCRIPTION	ITEM	PART #	QTY	DESCRIPTION
1	~	1	SUB FRAME (SPECIAL ORDER ONLY)	20	A18289	2	FENDER, STANDARD
2	~	1	CROSS TUBE, FR. (SPECIAL ORDER ONLY)	21	15629	8	STRAP, SUB-FRAME MOUNT
3	~	1	CROSS TUBE, RR. (SPECIAL ORDER ONLY)	22	300904	16	SCREW
4	18333	2	BUMPER EXTENSION	23	100272	16	LOCK WASHER
5	15061	1	CHANNEL, FORMED BUMPER	24	300826	16	NUT
6	18334	2	PLATE, BUMPER MOUNT	25	15059	4	STABILIZER MOUNT ASSEMBLY
7	100312	2	MUD FLAPS	26	11879	4	STABILIZER BAR ASSEMBLY
8	100580	8	SCREW	27	15058	2	TUB MOUNT
9	100663	24	FLAT WASHER	28	101149	8	SCREW
10	100248	16	NUT	29	100554	8	LOCK WASHER
11	100273	16	LOCK WASHER	30	100252	8	NUT
12	14482	4	PEDESTAL BASE PLATE	31	18038	4	GUSSET PLATE
13	102220	8	URETHANE SHOCK DISK	32	18037	1	BOTTOM TUBE
14	14898	8	CAGE PLATE, LOAD CELL	33	100368	4	SCREW
15	102249	16	SCREW	34	100179	8	FLAT WASHER
16	16109	4	LOAD CELL LOCK RING	35	100378	4	NUT
17	100156	4	O-RING	36	102866	4	SCREW
18	101009	8	NUT	37	102867	4	NUT
19	18830	8	ANGLE, FRAME REINFORCING				

SUB FRAME TRUCK



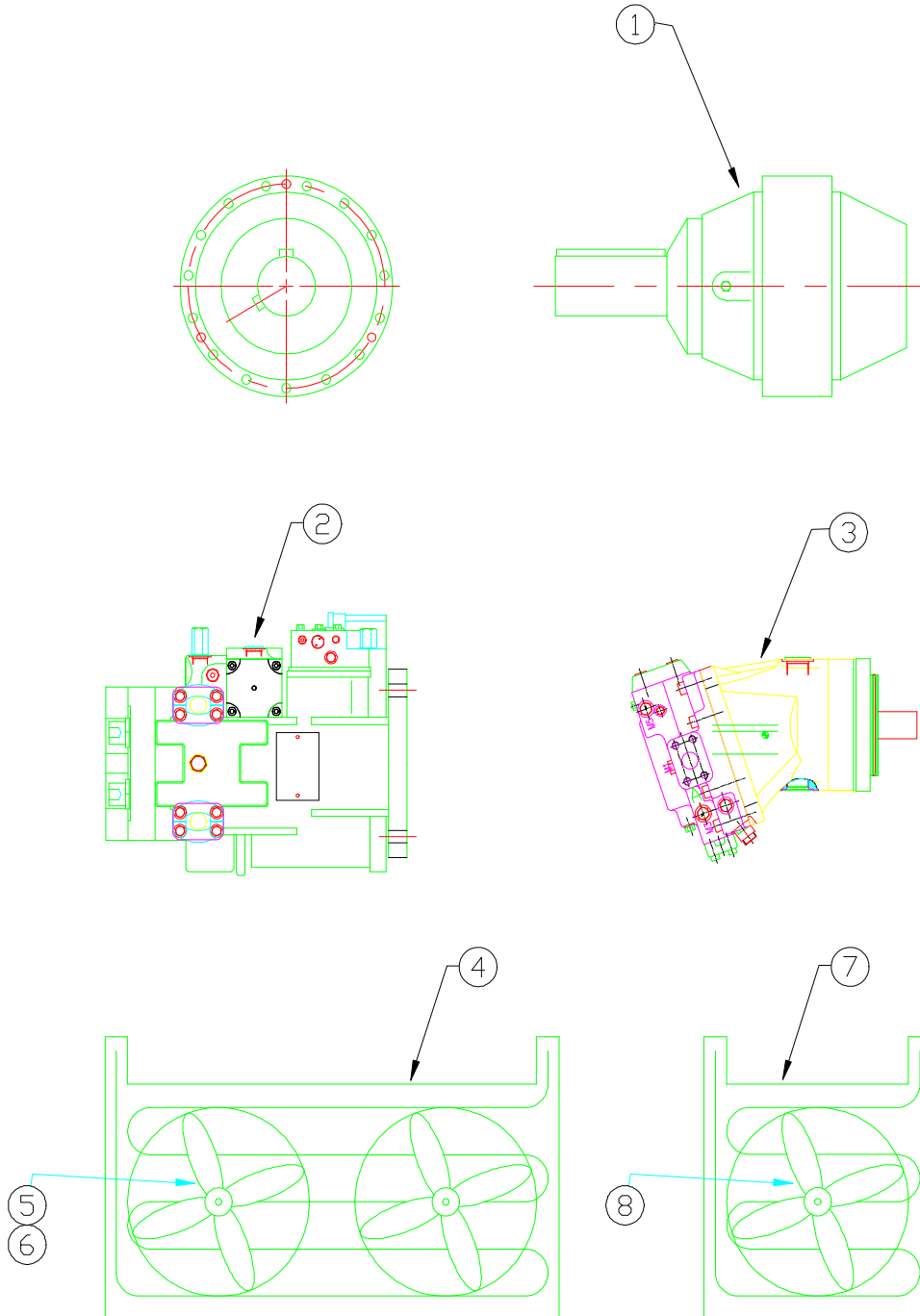
- 1 ADD WASHERS AS NEEDED TO ALLOW ADJUSTMENT OF NUT TO WITHIN 1/32 OF SCALE PLATE.
- 2 USED ON ALL UNITS S/N 900HB9000 AND ABOVE. CHECK MIXER IF S/N IS BETWEEN 900HB8000 AND 900HB9000. FOR UNITS BELOW S/N 900HB8000, PLEASE SEE PAGE 4.

SUB FRAME TRUCK

ITEM	PART #	QTY	DESCRIPTION	ITEM	PART #	QTY	DESCRIPTION
1	~	1	SUB FRAME (SPECIAL ORDER ONLY)	24	NPN	1	STAR WASHER
2	~	1	CROSS TUBE, FR. (SPECIAL ORDER ONLY)	25	100443	1	FLAT WASHER
3	~	1	CROSS TUBE, RR. (SPECIAL ORDER ONLY)	*26	~	1	BUMPER, TRUCK (SPECIAL ORDER ONLY)
4	A18861	4	LOAD CELL BRACKET	*27	~	2	BUMPER EXTENSION (SPECIAL ORDER ONLY)
5	100300	32	FLAT WASHER	28	100368	4	SCREW
6	102220	8	URETHANE SHOCK DISK	29	100179	4	FLAT WASHER
7	18855	8	STABILIZER BAR	30	100273	4	LOCK WASHER
8	18847	4	STABILIZER PLATE	31	100378	4	NUT
9	100556	16	FLAT WASHER	32	19156	1	CENTER SUPPORT
10	101877	8	SCREW	33	19155	2	OUTSIDE SUPPORT
11	18858	8	LOAD CELL LOCK	*34	NPN	2	SLOPED FENDER
12	NPN	8	LOCK NUT	35	18932	2	FENDER CLOSURE (RIGHT)
13	100367	8	SCREW	36	18900	4	SHEET, MUD FLAP EXTENSION
14	100240	16	SCREW	37	18902	6	FENDER KEEPER
15	A18870	4	LOAD CELL KEEPER	38	100276	12	SCREW
16	100271	16	LOCK WASHER	39	100271	12	LOCK WASHER
17	100254	16	NUT	40	100254	12	NUT
18	18846	4	LOAD CELL GUSSET	41	18933	2	FENDER CLOSURE (LEFT)
19	101009	8	LOCK NUT	42	18933	2	FENDER CLOSURE (LEFT) - optional
20	A16362	1	GROUNDING STRAP	43	15629	8	STRAP, SUB-FRAME MOUNT
21	100323	2	SCREW	44	300904	16	SCREW
22	100304	2	LOCK WASHER	45	100272	16	LOCK WASHER
23	100221	1	NUT	46	300826	16	NUT

NOTE: *26, *27, *34 - SPECIFY LENGTH WHEN ORDERING.
NPN - NO PART NUMBER

HYDROSTATIC DRIVE COMPONENTS



HYDROSTATIC DRIVE COMPONENTS

ITEM	PART #	QTY	DESCRIPTION	ITEM	PART #	QTY	DESCRIPTION
1	102734	1	PLANETARY GEARBOX, 25:1	4	NPN	1	OIL COOLER (DUAL FAN)
1	103078	1	PLANETARY GEARBOX, 45:1	5	NPN	2	FAN MOTOR (3061020)
2	NPN	1	HYDRAULIC PUMP 90L130	6	NPN	2	FAN BLADE (3070015)
2	NPN	1	HYDRAULIC PUMP 90R130	7	NPN	1	OIL COOLER (SINGLE FAN)
3	NPN	1	HYDROSTATIC DRIVE MOTOR, 51v110	8	NPN	1	FAN MOTOR/BLADE ASSEMBLY (68224)
3	NPN	1	HYDROSTATIC DRIVE MOTOR, 51v160				
3	NPN	1	HYDROSTATIC DRIVE MOTOR, 90M130				

NOTE: NPN - NO PART NUMBER

OIL COOLER, HYDRAULIC PUMP, HYDROSTATIC DRIVE MOTOR, AND PLANETARY GEARBOX OPTIONS **

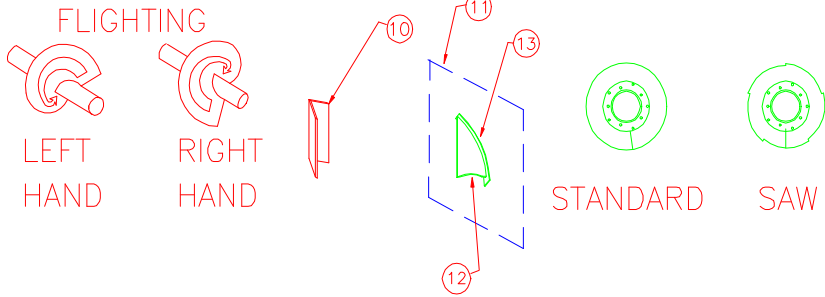
ITEM #	DESCRIPTION	PART NUMBER	MODEL NUMBER	ADDITIONAL REPLACEMENT PARTS
	PLANETARY GEARBOX			
1	25:1	102734	ED 2250/MN2/25.0/D/DS	
1	45:1	103078	ED 2255/MN2/45.0/D/DS	
	HYDRAULIC PUMP			
2		NPN	90L130	
2		NPN	90R130	
	HYDROSTATIC DRIVE MOTOR			
3		NPN	51V110	
3		103196	51V160	
3		103197	90M130	
	OIL COOLER (DUAL FAN)			
4		FEH F	AOMF-2-NPT-12VDC	
			3061020	FAN MOTOR
			3070015	FAN BLADE
	OIL COOLER (SINGLE FAN)			
7		A1906	1MF-30-1-4A	
		103968	68224	FAN MOTOR/BLADE ASSEMBLY

** - CALL TO VERIFY MODEL NUMBER BEFORE ORDERING REPLACEMENT

AUGER ASSEMBLY

MODEL 900

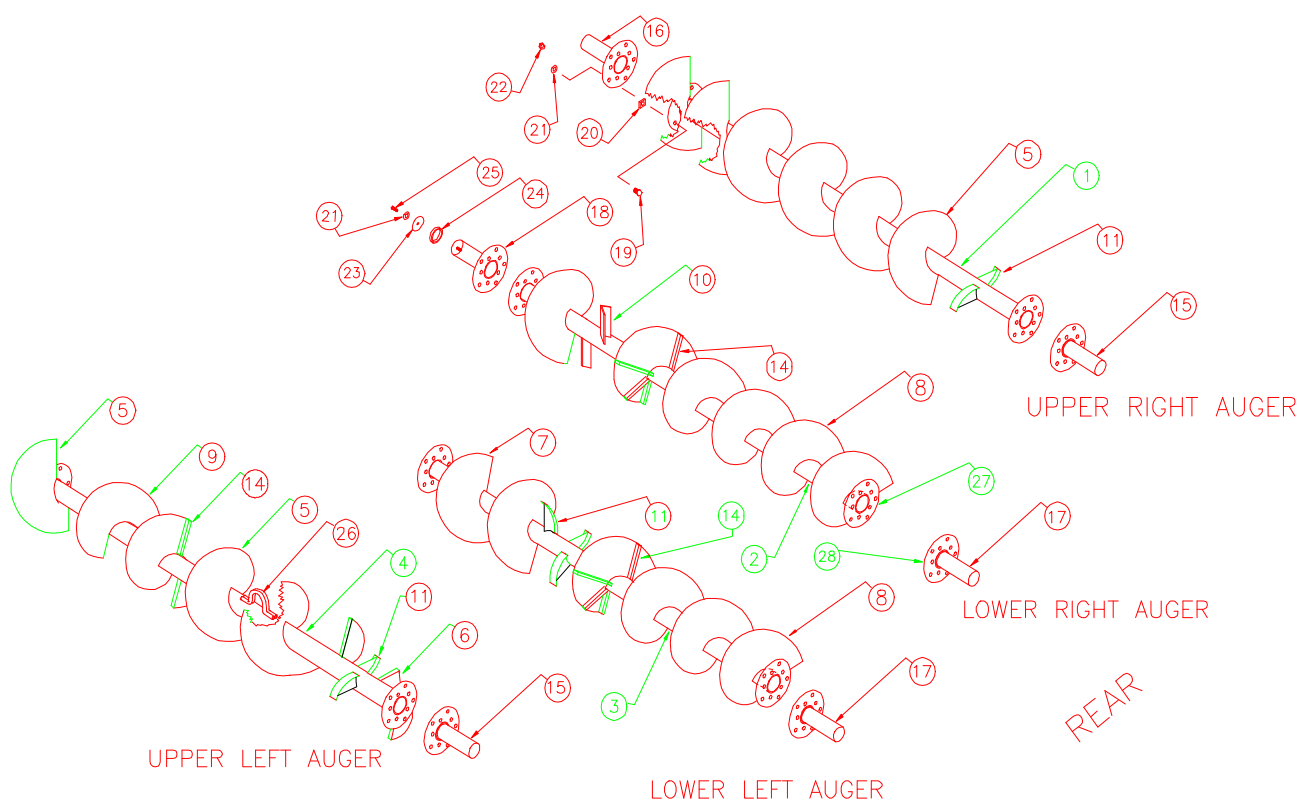
TYPICAL EXAMPLE



TO DETERMINE FLIGHTING TYPE:

COMPARE THE FLIGHTING WITH THE THREADS OF A BOLT AND IF THE FLIGHTING IS WRAPPED AROUND THE PIPE EXTENDING AWAY FROM YOU IN A CLOCKWISE DIRECTION THEN IT IS RIGHT HAND (RH) FLIGHTING IF THE FLIGHTING IS WRAPPED AROUND THE PIPE EXTENDING AWAY FROM YOU IN A COUNTER CLOCKWISE DIRECTION THEN IT IS LEFT HAND (LH) FLIGHTING.

BEARINGS: SEE REAR DRIVE



NOTE:

THESE ARE NOT ACTUAL FLIGHTING ARRANGEMENTS, THESE DRAWINGS ARE FOR ILLUSTRATION ONLY. PLEASE CHECK AUGER TUBE DIAMETER, ORIGINAL FLIGHTING SIZE, AND FLIGHTING ARRANGEMENT BEFORE ORDERING REPLACEMENT FLIGHTING. PLEASE SPECIFY AR OR MILD STEEL. SEE AUGER ORDER FORM.

AUGER ASSEMBLY

MODEL 900

ITEM	PART #	QTY	DESCRIPTION	ITEM	PART #	QTY	DESCRIPTION
1	**		AUGER ASS'Y, UPPER RIGHT	14	15678	AR	BRACE, 1/2 x 1 1/2 x 9
2	**		AUGER ASS'Y, LOWER RIGHT	*14	15177	AR	BRACE, 1/2 x 2 1/2 x 9 1/2
3	**		AUGER ASS'Y, LOWER LEFT	15	16416	2	STUB SHAFT, UPPER REAR
4	**		AUGER ASS'Y, UPPER LEFT	16	18163	2	STUB SHAFT, UPPER FRONT
5	15676	AR	FLIGHTING RH 3/8 x 28 OD x 28P x 8 5/8 ID SAW	17	18154	2	STUB SHAFT, LOWER REAR
6	15677	AR	FLIGHTING LH 3/8 x 28 OD x 28P x 8 5/8 ID SAW	18	18161	2	STUB SHAFT, LOWER FRONT
7	16999	AR	FLIGHTING RH 1/2 x 30 OD x 22P x 8 5/8 ID SAW	19	100555	40	SCREW
*7	17696	AR	FLIGHTING RH 1/2 x 29 1/4 OD x 22P x 8 5/8 ID SAW	20	12719	AR	SHIM
8	17000	AR	FLIGHTING LH 1/2 x 30 OD x 22P x 8 5/8 ID SAW	21	100554	42	LOCK WASHER
*8	17697	AR	FLIGHTING LH 1/2 x 29 1/4 OD x 22P x 8 5/8 ID SAW	22	100252	40	NUT
9	16988	AR	FLIGHTING LH 1/2 x 28 OD x 21P x 8 5/8 ID SAW	23	18165	2	WASHER, SHAFT SPACER
10	15176	AR	KICKER, ANGLE	24	18164	2	SHAFT SPACER RING
11	18293	AR	KICKER, PADDLE ASSEMBLY	25	101082	2	SCREW
12	17001	AR	KICKER BRACE	26	16392	8	AUGER HOOK
13	15005	AR	KICKER PADDLE	27	15175	8	AUGER FLANGE PLATE
				28	18683	8	STUB SHAFT FLANGE PLATE

NOTE: ** DUE TO VARIOUS AUGER CONFIGURATIONS, PLEASE CHECK YOUR AUGER BEFORE ORDERING.

*7, *8 - REDUCED DIAMETER FLIGHTING.

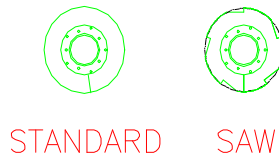
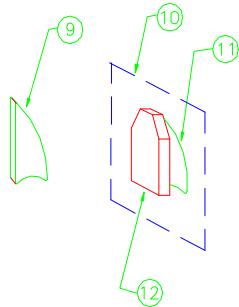
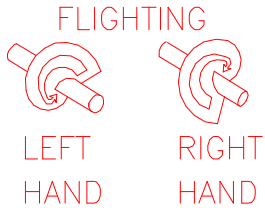
*14 - LOWER AUGER FLIGHTING BRACE (OPTIONAL).

AR - AS REQUIRED

AUGER ASSEMBLY

MODEL 20Z30

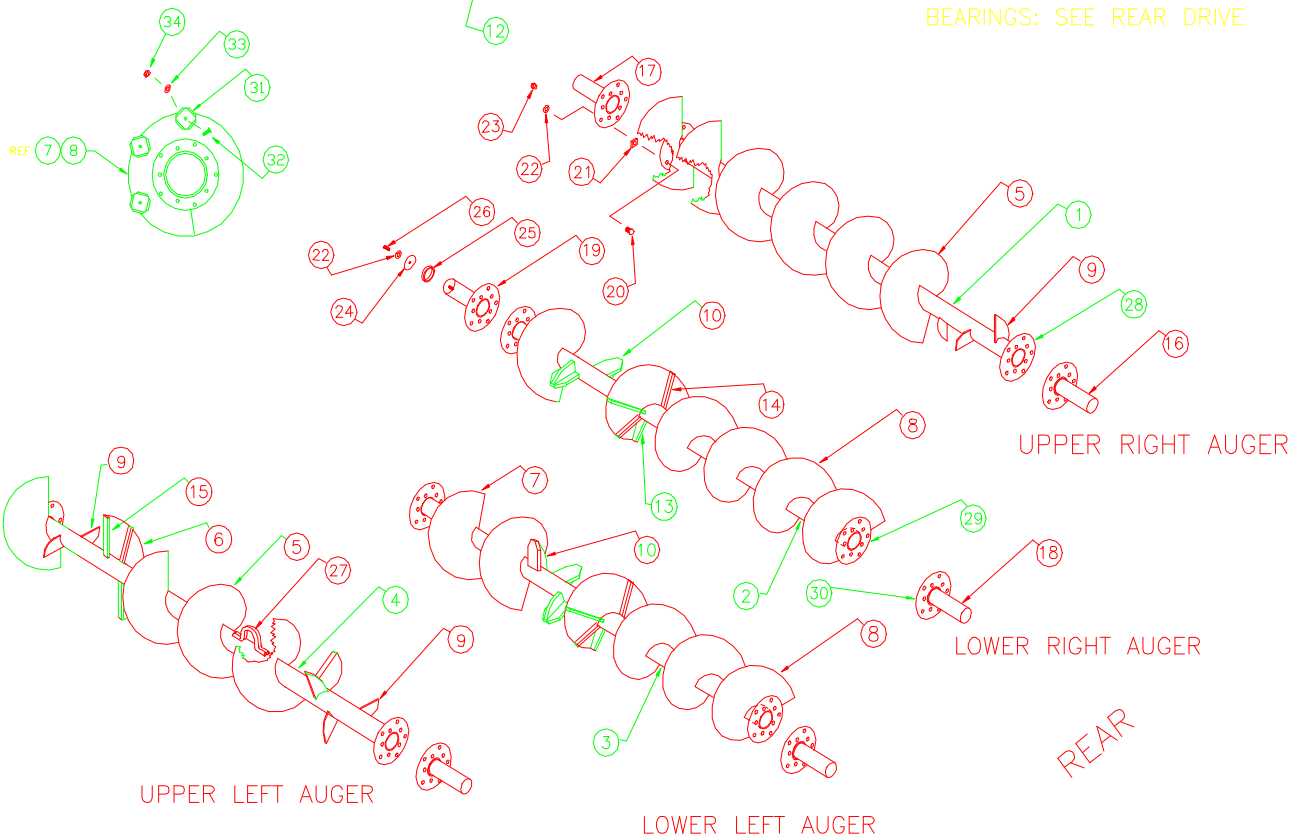
TYPICAL EXAMPLE



TO DETERMINE FLIGHTING TYPE:

COMPARE THE FLIGHTING WITH THE THREADS OF A BOLT AND IF THE FLIGHTING IS WRAPPED AROUND THE PIPE EXTENDING AWAY FROM YOU IN A CLOCKWISE DIRECTION THEN IT IS RIGHT HAND (RH) FLIGHTING IF THE FLIGHTING IS WRAPPED AROUND THE PIPE EXTENDING AWAY FROM YOU IN A COUNTER CLOCKWISE DIRECTION THEN IT IS LEFT HAND (LH) FLIGHTING.

BEARINGS: SEE REAR DRIVE



NOTE:

THESE ARE NOT ACTUAL FLIGHTING ARRANGEMENTS, THESE DRAWINGS ARE FOR ILLUSTRATION ONLY. PLEASE CHECK AUGER TUBE DIAMETER, ORIGINAL FLIGHTING SIZE, AND FLIGHTING ARRANGEMENT BEFORE ORDERING REPLACEMENT FLIGHTING. PLEASE SPECIFY AR OR MILD STEEL. SEE AUGER ORDER FORM.

AUGER ASSEMBLY

MODEL 20Z30

ITEM	PART #	QTY	DESCRIPTION	ITEM	PART #	QTY	DESCRIPTION
1	**		AUGER ASS'Y, UPPER RIGHT	17	18163	2	STUB SHAFT, UPPER FRONT
2	**		AUGER ASS'Y, LOWER RIGHT	18	18154	2	STUB SHAFT, LOWER REAR
3	**		AUGER ASS'Y, LOWER LEFT	19	18161	2	STUB SHAFT, LOWER FRONT
4	**		AUGER ASS'Y, UPPER LEFT	20	100555	40	SCREW
5	15676	AR	FLIGHTING RH 3/8 x 28 OD x 28P x 8 5/8 ID SAW	21	12719	AR	SHIM
6	15677	AR	FLIGHTING LH 3/8 x 28 OD x 28P x 8 5/8 ID SAW	22	100554	42	LOCK WASHER
7	18745	AR	FLIGHTING RH 1/2 x 28 1/2 OD x 22P x 10 3/4 ID STANDARD	23	100252	40	NUT
*7	18808	AR	FLIGHTING RH 1/2 x 27 3/4 OD x 22P x 10 3/4 ID STANDARD	24	18165	2	WASHER, SHAFT SPACER
8	18746	AR	FLIGHTING LH 1/2 x 28 1/2 OD x 22P x 10 3/4 ID STANDARD	25	18164	2	SHAFT SPACER RING
*8	18807	AR	FLIGHTING LH 1/2 x 27 3/4 OD x 22P x 10 3/4 ID STANDARD	26	101082	2	SCREW
9	15656	AR	KICKER, CURVED	27	16392	8	AUGER HOOK
10	18841	AR	KICKER, PADDLE ASSEMBLY	28	15175	4	UPPER AUGER FLANGE PLATE
11	18742	AR	KICKER BRACE	29	18477	4	LOWER AUGER FLANGE PLATE
12	18743	AR	KICKER PADDLE	30	18683	8	STUB SHAFT FLANGE PLATE
13	18747	AR	BRACE, 1/2 x 6 x 8 1/2	31	102868	138	KNIFE, LOWER AUGER
14	18748	AR	BRACE, 1/2 x 2 1/2 x 8 1/2	32	101996	138	SCREW
15	15678	AR	BRACE, 1/2 x 1 1/2 x 9 (UPPER AUGERS)	33	100271	138	LOCK WASHER
16	16416	2	STUB SHAFT, UPPER REAR	34	100254	138	HEX NUT

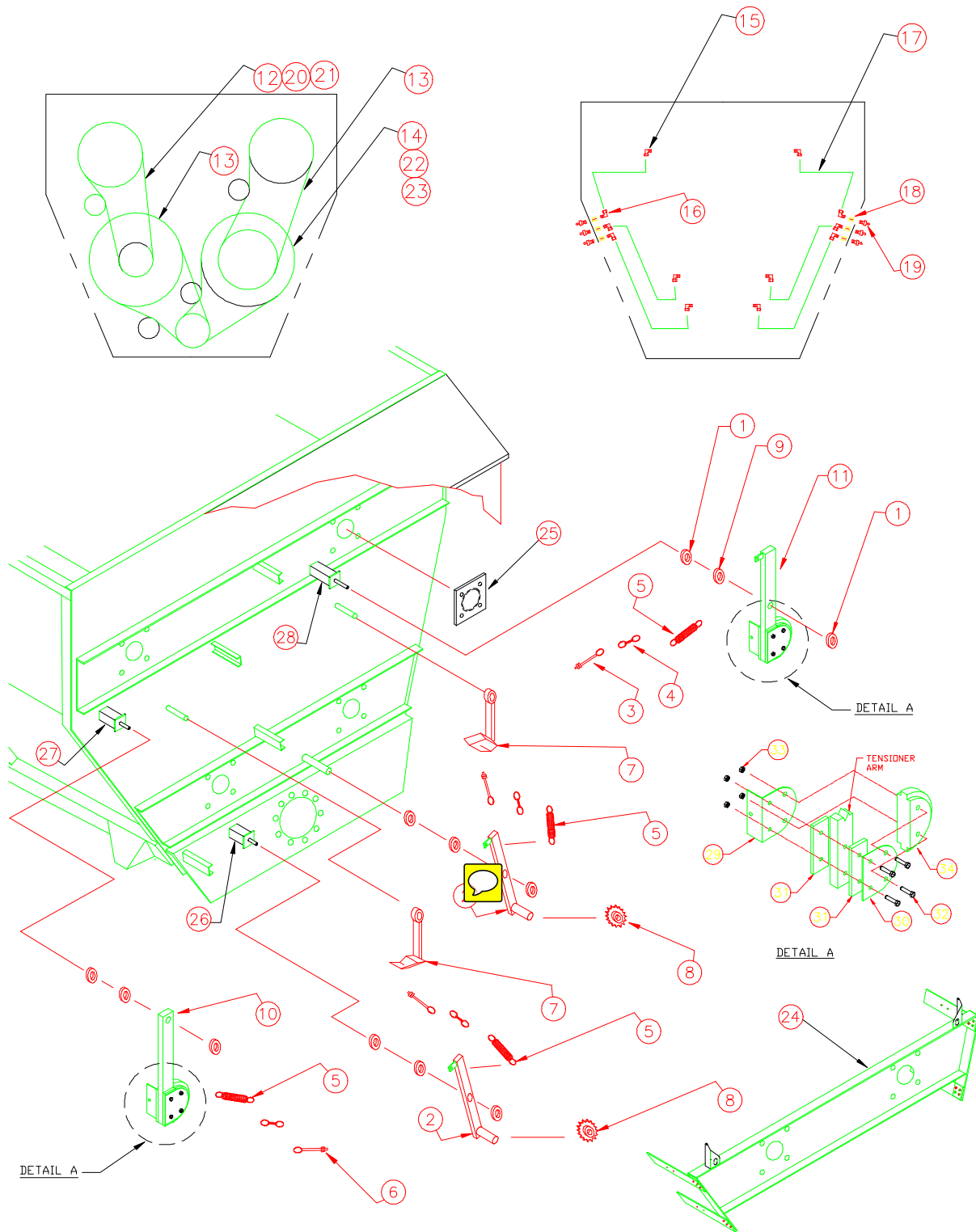
NOTE: ** DUE TO VARIOUS AUGER CONFIGURATIONS, PLEASE CHECK YOUR AUGER BEFORE ORDERING.

*7, *8 - REDUCED DIAMETER FLIGHTING.

AR - AS REQUIRED

REAR DRIVE ASSEMBLY

WITH 160 MAIN DRIVE CHAIN



REAR DRIVE ASSEMBLY

WITH 160 MAIN DRIVE CHAIN

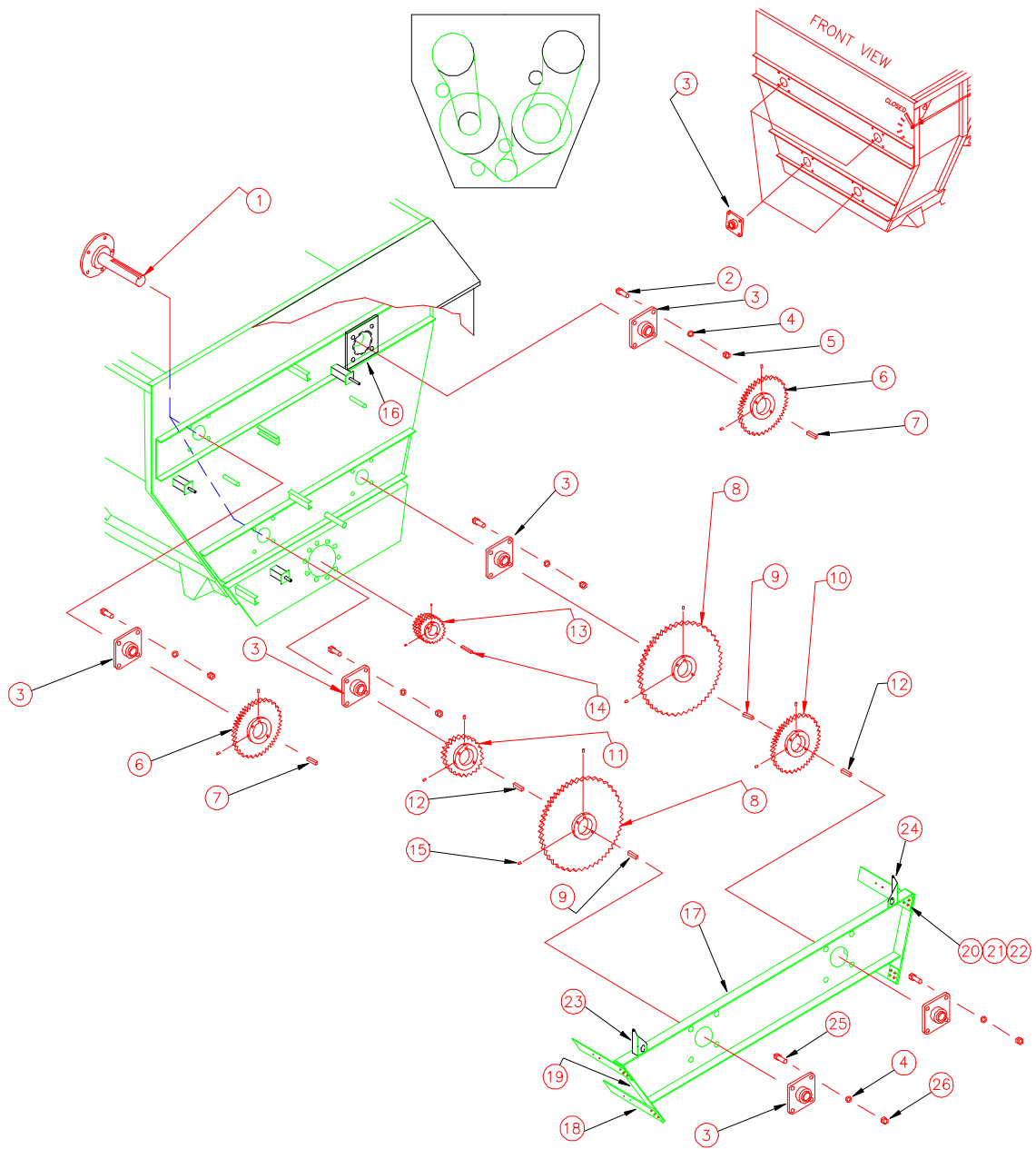
ITEM	PART #	QTY	DESCRIPTION	ITEM	PART #	QTY	DESCRIPTION
1	102800	8	COLLAR W/ SET SCREW	18	100218	6	GREASE FITTING, 1/8 NPT
*2	A18103	2	TENSIONER ARM	19	101953	AR	ZERK REPLACEMENT TIP
3	101840	4	EYE BOLT	20	100671	AR	CONNECTOR LINK, 120
4	7070514	AR	CHAIN	21	100672	AR	OFFSET LINK, 120
5	101831	4	SPRING 8"	22	9623	AR	CONNECTOR LINK, 160
6	100254	8	NUT	23	9624	AR	OFFSET LINK, 160
7	A18102	2	OILER ASS'Y	24	A18449	1	BEARING SUPPORT ASSEMBLY
8	A17773	2	SPROCKET	25	A18050	1	BEARING OFFSET
9	102355	4	NYLON BEARING	26	A18081	1	TENSIONER PIVOT
*10	18105	1	TENSIONER ARM	27	A18082	1	TENSIONER PIVOT
*11	18104	1	TENSIONER ARM	28	A18083	1	TENSIONER PIVOT
12	102808	1	DRIVE CHAIN (W/ CONN.) 120 x 93	29	18106	2	TENSIONER FORMED ANGLE
13	102809	1	DRIVE CHAIN (W/ CONN.) 120 x 95	30	18107	2	TENSIONER COVER PLATE
14	102807	2	DRIVE CHAIN (W/ CONN.) 160 x 74	31	18108	4	TENSIONER SPACER BAR
15	102753	6	90° COMP. FITTING	32	100694	8	SCREW
16	102797	6	90° COMP. FITTING	33	101985	8	NUT
17	6060031	1	ALUMINUM TUBING 24'	34	18109	2	CHAIN GUIDE, 120

NOTE: *2, *10 & *11 REQUIRE NYLON BEARINGS (#9).
20, 21, 22, 23 - NOT SHOWN
AR - AS REQUIRED

ITEM # 2 A18103 1 ON LOWER LEFT AND TENSIONER A15012 ON LOWER RIGHT.

REAR DRIVE ASSEMBLY

STRAIGHT BORE SPROCKETS WITH 160 MAIN DRIVE CHAIN



REAR DRIVE ASSEMBLY

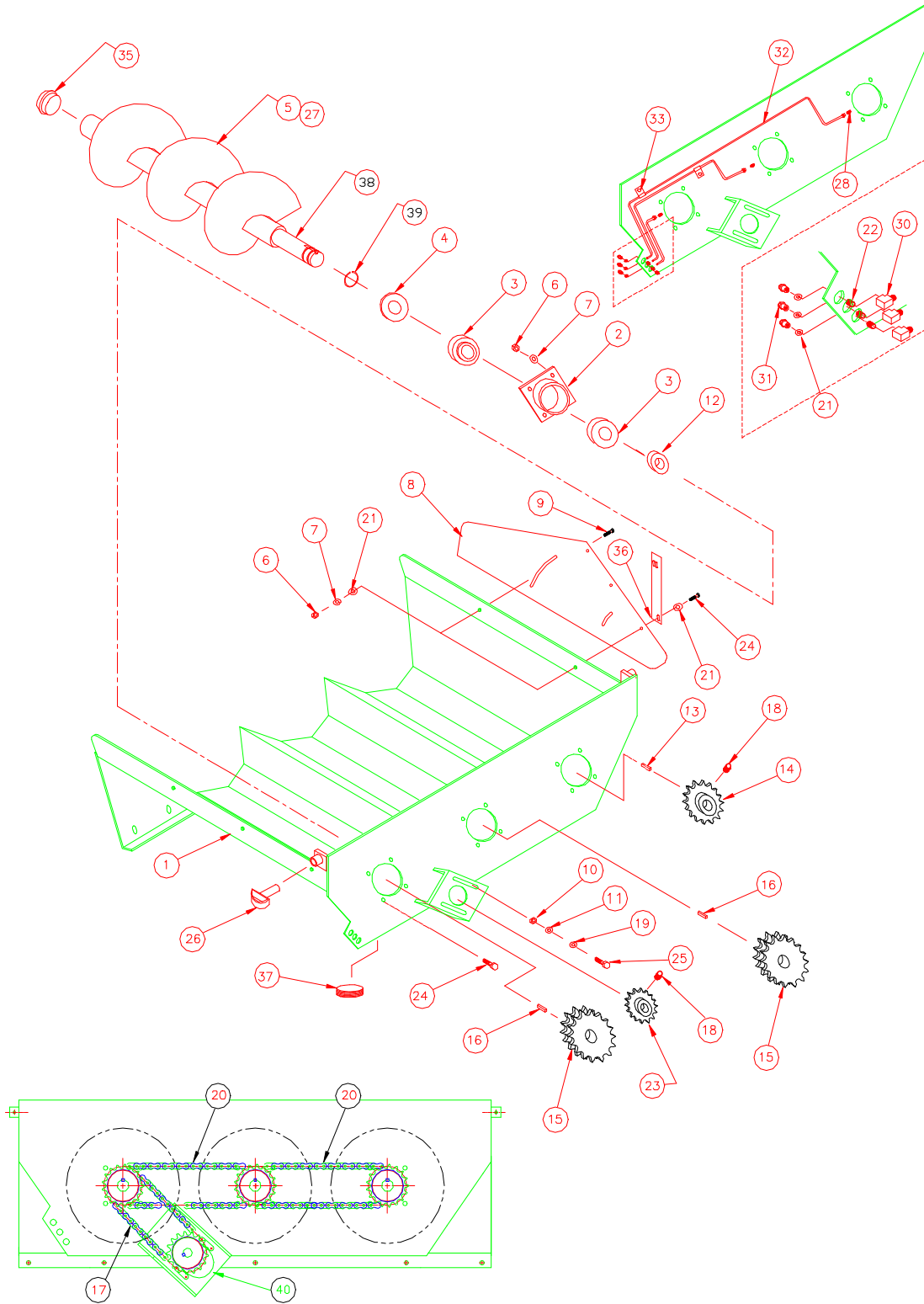
STRAIGHT BORE SPROCKETS WITH 160 MAIN DRIVE CHAIN

ITEM	PART #	QTY	DESCRIPTION	ITEM	PART #	QTY	DESCRIPTION
1	A16416	2	STUB SHAFT, UPPER	13	102803	1	SPROCKET, DOUBLE (18-160)
1	A18154	2	STUB SHAFT, LOWER	14	NPN	2	KEY (369-0824-0000, rounded end, 1x1x8)
2	102559	32	SCREW	15	4467	14	SET SCREW 3/4 - 10 x 3/4
3	102558	10	BEARING	16	18050	1	BEARING OFFSET
4	100361	40	LOCK WASHER	17	A18449	1	BEARING SUPPORT ASSEMBLY
5	100249	32	NUT	18	18071	4	MOUNT BAR, BEARING SUPPORT
6	102806	2	SPROCKET (45 TOOTH - 120 CHAIN) - 900	19	18061	2	OUTER MOUNT BAR, BEARING SUPPORT
6	102805	2	SPROCKET (36 TOOTH - 120 CHAIN) - 20z30	20	100209	16	SCREW
7	17772	2	KEY	21	100273	16	LOCK WASHER
8	102804	2	SPROCKET (60 TOOTH - 160 CHAIN)	22	100378	16	NUT
9	18101	2	KEY	23	18254	1	DOOR SUPPORT MOUNT, LEFT
10	102805	1	SPROCKET (36 TOOTH - 120 CHAIN)	24	18245	1	DOOR SUPPORT MOUNT, RIGHT
11	102751	1	SPROCKET (32 TOOTH - 120 CHAIN)	25	100322	8	SCREW
12	17782	2	KEY	26	100744	8	NUT

NOTE: ALWAYS DETERMINE ACTUAL NUMBER OF TEETH ON SPROCKETS BEFORE ORDERING.
NPN - NO PART NUMBER

DISCHARGE

TRIPLE AUGER



DISCHARGE

TRIPLE AUGER

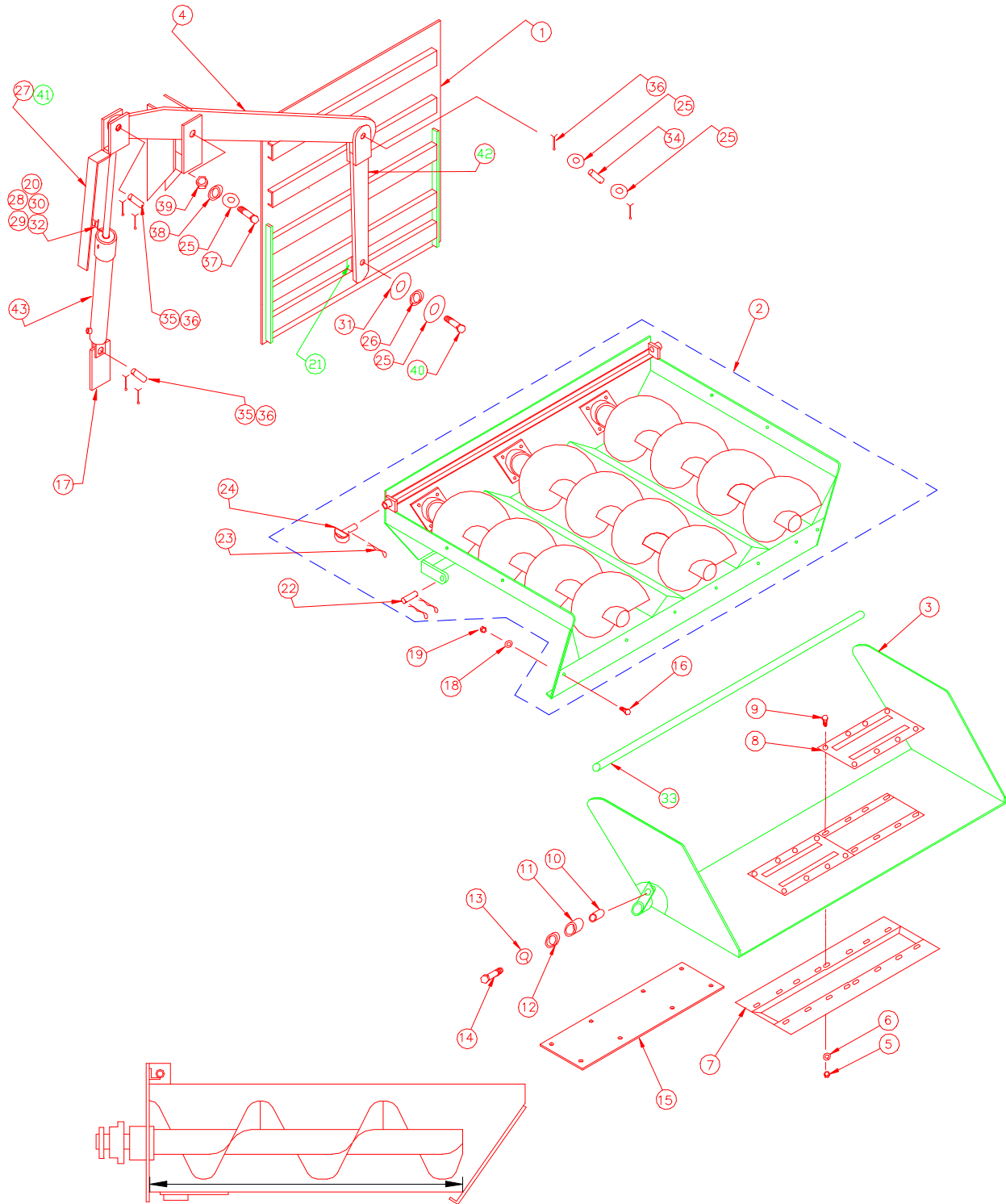
ITEM	PART #	QTY	DESCRIPTION	ITEM	PART #	QTY	DESCRIPTION
	A17902	1	DISCHARGE ASS'Y FLAT BTM TRPL SHT	15	102778	2	SPROCKET
	A18168	1	DISCHARGE ASS'Y FLAT BTM TRPL MED	16	10983	2	KEY
	A18169	1	DISCHARGE ASS'Y FLAT BTM TRPL EXT	17	102765	1	CHAIN
*1	A17899	1	DISCHARGE BOTTOM ASS'Y (27.5")	18	100703	8	SET SCREW
*1	A18170	1	DISCHARGE BOTTOM ASS'Y (34.5")	19	100838	2	FLAT WASHER
*1	A18171	1	DISCHARGE BOTTOM ASS'Y (42.5")	20	102764	2	CHAIN
2	A14590	3	AUGER BEARING HOUSING	21	100300	18	FLAT WASHER
3	16819	6	BEARING (1 7/16 ID)	22	102798	3	FITTING, 1/8 NPT CLOSE NIPPLE
4	15617	3	BEARING CAP	23	102128	1	SPROCKET
*5	A16619	3	DISCHARGE AUGER (27.5")	24	100240	12	SCREW
*5	A14500	3	DISCHARGE AUGER (34.5")	25	100230	2	SCREW
*5	A15127	3	DISCHARGE AUGER (42.5")	26	A15285	2	PULL PIN, DISCHARGE
6	100254	16	NUT	27	15166	AR	FLIGHTING, (10" PITCH PER FLIGHT)
7	100271	16	LOCK WASHER	28	102759	3	FITTING, STRAIGHT COMP
*8	17958	2	DISCHARGE HANGER (27.5")	30	102797	3	FITTING, 90° COMP. (F)
*8	17993	2	DISCHARGE HANGER (34.5")	31	102454	3	GREASE ZERK (F)
*8	17998	2	DISCHARGE HANGER (42.5")	32	6060031	1	TUBE, 6 FT. ALUM.
*8	NPN	2	HANGER HALF, WITH HYD. LIFT	33	102348	2	HOSE MOUNT CLAMP
*8	NPN	2	HANGER HALF, WITH HYD. LIFT	35	102578	3	CAP, AUGER END
9	102096	4	SCREW	36	16078	2	BAR DISCHARGE SPACER
10	100250	2	NUT	37	102078	3	DRAIN PLUG
11	100272	2	LOCK WASHER	38	14502	2	DISCHARGE AUGER SHAFT
12	NSS	2	BEARING LOCK COLLAR	39	103040	2	SNAP RING
13	19083	1	KEY	*40	102980	1	HYDRAULIC MOTOR
14	101845	1	SPROCKET				

NOTE: *1, *5 WHEN ORDERING A NEW DISCHARGE, HANGER PLATE, AUGER, AUGER FLIGHTING, BOTTOM, OR LINERS; MEASURE DISCHARGE LENGTH. MEASUREMENTS ARE TAKEN FROM UNDER ANY AUGER, FROM THE BACK PLATE TO THE END (WHERE CHUTE BEGINS). SEE PAGE 20 FOR VISUAL REFERENCE.
*40 USE TRW ROSS HYDRAULIC MOTOR # 102980 AS PRIMARY MOTOR. CHAR-LYNN # 101705 MAY BE USED IF NECESSARY.

*8 SOLD IN SETS ONLY
AR - AS REQUIRED
NPN - NO PART NUMBER
NSS - NOT SOLD SEPARATELY

DISCHARGE

TRIPLE AUGER W/ DOOR ASSEMBLY



DISCHARGE LENGTH IS MEASURED BETWEEN THESE POINTS.

DISCHARGE

TRIPLE AUGER W/ DOOR ASSEMBLY

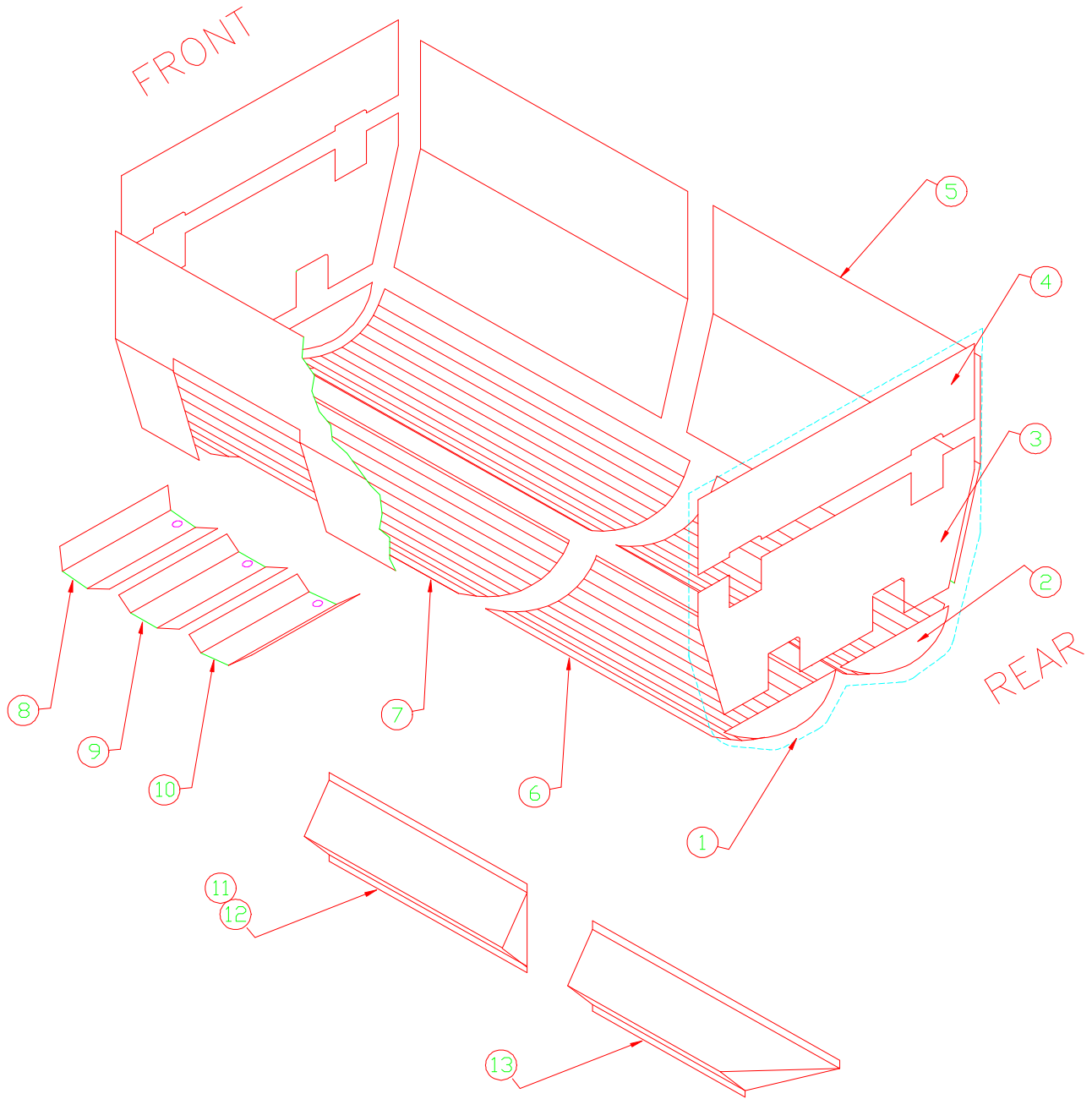
ITEM	PART #	QTY	DESCRIPTION	ITEM	PART #	QTY	DESCRIPTION
1	A17904	1	DISCHARGE DOOR	22	14533	1	CYLINDER PIN
*2	A17902	1	DISCHARGE ASS'Y (27.5")	23	101018	4	CLIP, HAIR PIN
*2	A18168	1	DISCHARGE ASS'Y (34.5")	24	A15285	2	DISCHARGE HINGE PULL PIN
*2	A18169	1	DISCHARGE ASS'Y (42.5")	25	100360	4	FLAT WASHER
3	A17916	1	DROP CHUTE WITH MAGNET GUARD	26	16959	1	BUSHING
4	17909	1	PIVOT ARM	27	16964	1	POINTER, DOOR POSITION
5	100297	16	NUT	28	102254	4	WASHER
6	100170	16	LOCK WASHER	29	100175	4	SCREW
7	A15622	1	MAGNET GUARD	30	102253	4	NUT
8	100985	2	MAGNET 18"	31	102666	1	FLAT WASHER
9	102283	16	SCREW	32	102401	1	SWITCH, MAGNET
10	14453	1	TUBE, CLY. MNT. HINGE	33	17918	1	SHAFT, HINGE
11	14573	1	BUSHING LONG	34	16169	1	PIN
12	14574	1	BUSHING SHORT	35	12146	2	CYLINDER PIN
13	100272	1	LOCK WASHER	36	100174	6	COTTER PIN
14	100796	1	SCREW	37	102452	1	SCREW
15	16792	1	COVER, MAGNET GUARD	38	102355	1	BEARING, NYLINER
16	100240	7	SCREW	39	102453	1	LOCK NUT
17	16954	1	BAR, CYLINDER MOUNT	40	100324	1	SCREW
18	100271	7	LOCK WASHER	41	101181	1	DECAL, DOOR GUAGE
19	100254	7	NUT	42	A17908	1	LOWER ARM ASS'Y
20	17120	1	ANGLE, SWITCH MOUNT	43	A16955	1	DISCHARGE DOOR CYLINDER
21	16942	1	LOWER DOOR ARM MOUNT BLOCK				

NOTE: *2 WHEN ORDERING A NEW DISCHARGE, HANGER PLATE, AUGER, AUGER FLIGHTING, BOTTOM, OR LINERS; MEASURE DISCHARGE LENGTH. MEASUREMENTS ARE TAKEN FROM UNDER ANY AUGER, FROM THE BACK PLATE TO THE END (WHERE CHUTE BEGINS). SEE PAGE 20 FOR VISUAL REFERENCE.

*2 DISCHARGE INCLUDES CHAINS, SPROCKETS, BEARINGS, AND HYDRAULIC MOTOR (SEE PAGE 19, ITEM 40). IT DOES **NOT** INCLUDE DROP CHUTE CYLINDER (SEE PAGE 31).

LINERS AND HAY SHELVES

MODEL 900



LINERS & HAY SHELVES

MODEL 900

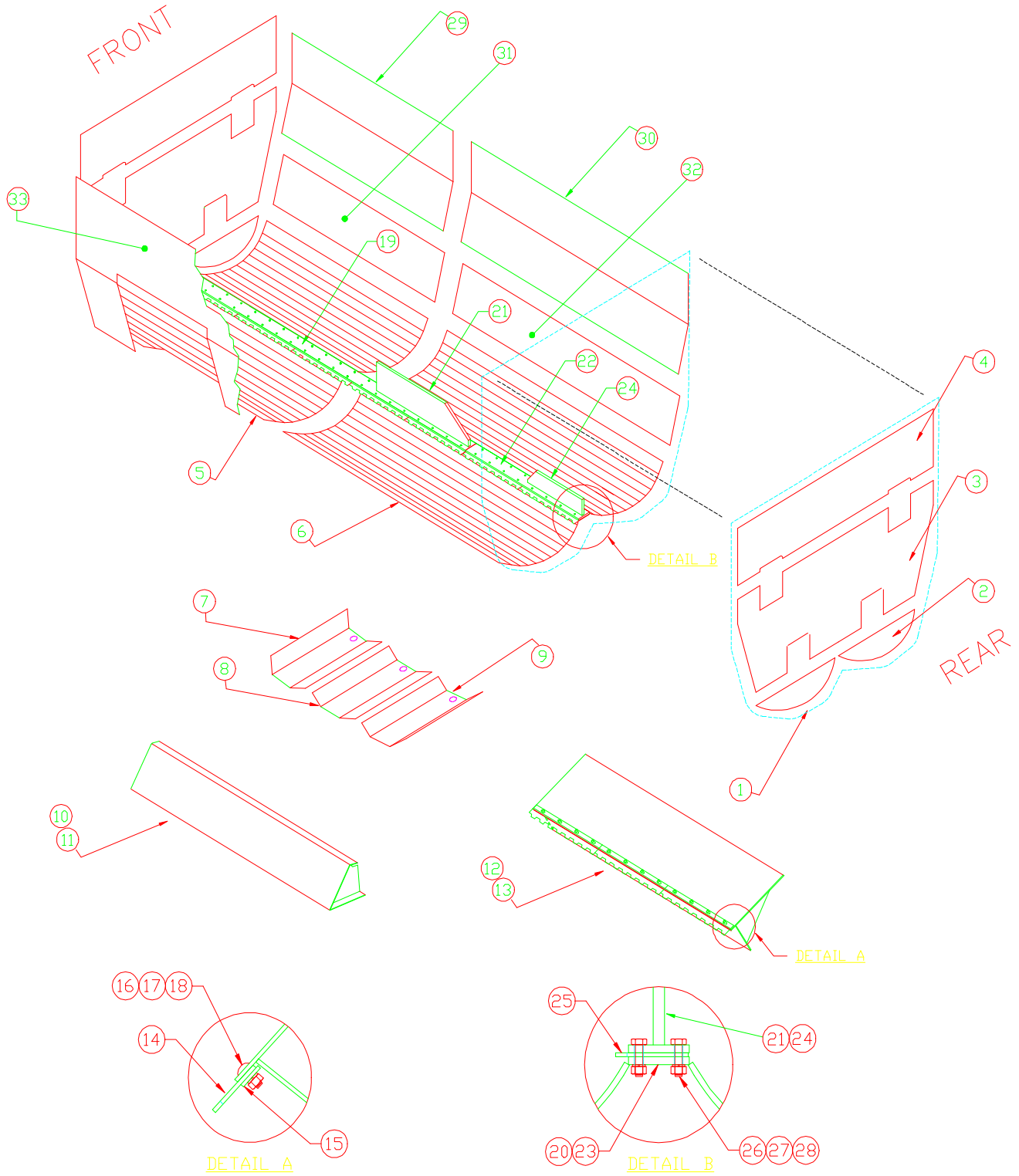
ITEM	PART #	QTY	DESCRIPTION	ITEM	PART #	QTY	DESCRIPTION
				8	18988	1	DISCHARGE LINER LH (MILD 27.5")
1	A9713	2	END LINER ASS'Y (STAINLESS STEEL)	8	18990	1	DISCHARGE LINER LH (MILD 34.5")
1	A9753	2	END LINER ASS'Y (MILD STEEL)	8	18992	1	DISCHARGE LINER LH (MILD 42.5")
2	9714	4	END LINER, BOTTOM (STAINLESS STEEL)	9	18141	1	DISCHARGE LINER CTR (STAINLESS 27.5")
2	9754	4	END LINER, BOTTOM (MILD STEEL)	9	18177	1	DISCHARGE LINER CTR (STAINLESS 34.5")
3	9715	2	END LINER, MIDDLE (STAINLESS STEEL)	9	18180	1	DISCHARGE LINER CTR (STAINLESS 42.5")
3	9755	2	END LINER, MIDDLE (MILD STEEL)	9	18994	1	DISCHARGE LINER CTR (MILD 27.5")
4	9716	2	END LINER, TOP (STAINLESS STEEL)	9	18995	1	DISCHARGE LINER CTR (MILD 34.5")
4	9756	2	END LINER, TOP (MILD STEEL)	9	18996	1	DISCHARGE LINER CTR (MILD 42.5")
5	9897	AR	SIDE LINER 5 FT. (STAINLESS STEEL)	10	18140	1	DISCHARGE LINER RH (STAINLESS 27.5")
5	9895	AR	SIDE LINER 5 FT. (MILD STEEL)	10	18178	1	DISCHARGE LINER RH (STAINLESS 34.5")
6	16477	AR	BOTTOM LINER 6 FT. (STAINLESS STEEL)	10	18181	1	DISCHARGE LINER RH (STAINLESS 42.5")
6	9460	AR	BOTTOM LINER 6 FT. (MILD STEEL)	10	18989	1	DISCHARGE LINER RH (MILD 27.5")
7	16478	AR	BOTTOM LINER 8 FT. (STAINLESS STEEL)	10	18991	1	DISCHARGE LINER RH (MILD 34.5")
7	9461	AR	BOTTOM LINER 8 FT. (MILD STEEL)	10	18993	1	DISCHARGE LINER RH (MILD 42.5")
8	18119	1	DISCHARGE LINER LH (STAINLESS 27.5")	11	A17017	1	HAY SHELF 47 5/8"
8	18176	1	DISCHARGE LINER LH (STAINLESS 34.5")	12	A17014	1	HAY SHELF 71 5/8"
8	18179	1	DISCHARGE LINER LH (STAINLESS 42.5")	13	A16995	1	HAY SHELF 90"

NOTE: WHEN ORDERING NEW DISCHARGE LINERS MEASURE DISCHARGE LENGTH. MEASUREMENTS ARE TAKEN FROM UNDER EITHER AUGER, FROM THE BACK PLATE TO THE END (WHERE DROP CHUTE BEGINS). PLEASE REFER TO PAGE 20 FOR VISUAL REFERENCE.

AR - AS REQUIRED
NPN - NO PART NUMBER

LINERS AND HAY SHELVES

MODEL 20Z30



LOWER HAY SHELF HARDWARE

TUB DIVIDER HARDWARE

LINERS & HAY SHELVES

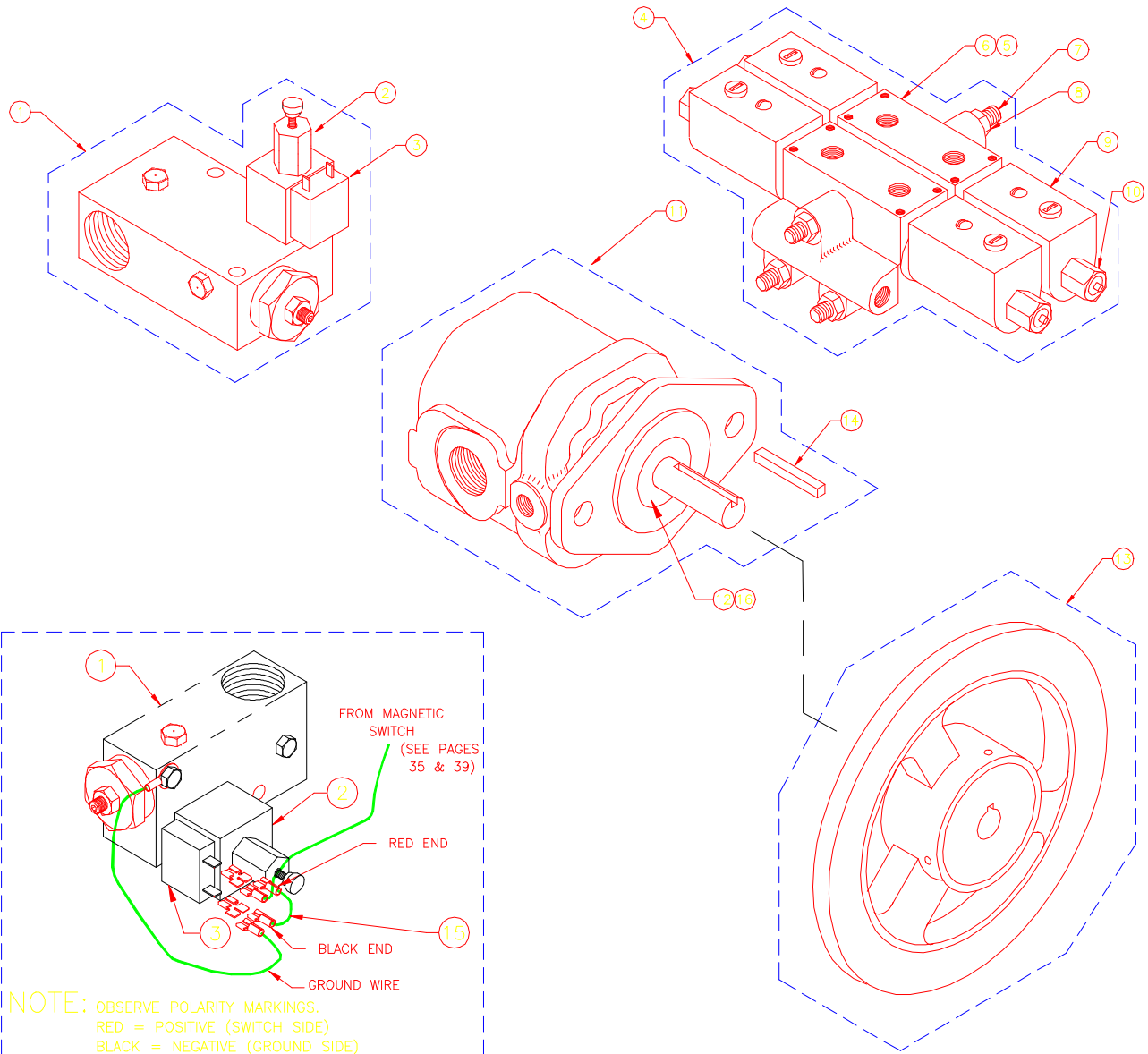
MODEL 20Z30

ITEM	PART #	QTY	DESCRIPTION	ITEM	PART #	QTY	DESCRIPTION
1	A9713	2	END LINER ASS'Y (STAINLESS STEEL)	10	18837	2	UPPER HAY SHELF 71 7/8"
1	A9753	2	END LINER ASS'Y (MILD STEEL)	11	19011	1	UPPER HAY SHELF 95 3/4"
2	9714	4	END LINER, BOTTOM (STAINLESS STEEL)	12	18691	2	LOWER HAY SHELF 71 3/4"
2	9754	4	END LINER, BOTTOM (MILD STEEL)	13	18653	1	LOWER HAY SHELF 95 3/4"
3	9715	2	END LINER, MIDDLE (STAINLESS STEEL)	14	18642	14	HAY SHELF CUTTER BAR
3	9755	2	END LINER, MIDDLE (MILD STEEL)	15	18652	10	REINFORCING BAR
4	9716	2	END LINER, TOP (STAINLESS STEEL)	16	102482	37	SCREW
4	9756	2	END LINER, TOP (MILD STEEL)	17	100272	37	LOCK WASHER
5	18788	AR	BOTTOM LINER 6 FT. (STAINLESS STEEL)	18	300826	37	NUT
5	18786	AR	BOTTOM LINER 6 FT. (MILD STEEL)	19	18761	1	TUB DIVIDER ASSEMBLY, FRONT
6	18789	AR	BOTTOM LINER 8 FT. (STAINLESS STEEL)	20	18755	1	CENTER BAR, FRONT 119 7/8"
6	18787	AR	BOTTOM LINER 8 FT. (MILD STEEL)	21	18644	1	DIVIDER BAR, FRONT 39"
7	18119	1	DISCHARGE LINER LH (STAINLESS 27.5")	22	19013	1	TUB DIVIDER ASSEMBLY, REAR
7	18176	1	DISCHARGE LINER LH (STAINLESS 34.5")	23	18755	1	CENTER BAR, REAR 119 7/8"
7	18179	1	DISCHARGE LINER LH (STAINLESS 42.5")	24	19012	1	DIVIDER BAR, REAR 95"
7	18988	1	DISCHARGE LINER LH (MILD 27.5")	25	18733	10	TUB DIVIDER CUTTER BAR
7	18990	1	DISCHARGE LINER LH (MILD 34.5")	26	100230	80	SCREW
7	18992	1	DISCHARGE LINER LH (MILD 42.5")	27	100272	80	LOCK WASHER
8	18141	1	DISCHARGE LINER CTR (STAINLESS 27.5")	28	100250	80	NUT
8	18177	1	DISCHARGE LINER CTR (STAINLESS 34.5")	29	9947	2	UPPER RIGHT SIDE LINER 6 FT. (STAINLESS)
8	18180	1	DISCHARGE LINER CTR (STAINLESS 42.5")	29	9943	2	UPPER RIGHT SIDE LINER 6 FT. (MILD)
8	18994	1	DISCHARGE LINER CTR (MILD 27.5")	30	9949	1	UPPER RIGHT SIDE LINER 8 FT. (STAINLESS)
8	18995	1	DISCHARGE LINER CTR (MILD 34.5")	30	9945	1	UPPER RIGHT SIDE LINER 8 FT. (MILD)
8	18996	1	DISCHARGE LINER CTR (MILD 42.5")	31	9948	2	LOWER RIGHT SIDE LINER 6 FT. (STAINLESS)
9	18140	1	DISCHARGE LINER RH (STAINLESS 27.5")	31	9944	2	LOWER RIGHT SIDE LINER 6 FT. (MILD)
9	18178	1	DISCHARGE LINER RH (STAINLESS 34.5")	32	9950	1	LOWER RIGHT SIDE LINER 8 FT. (STAINLESS)
9	18181	1	DISCHARGE LINER RH (STAINLESS 42.5")	32	9946	1	LOWER RIGHT SIDE LINER 8 FT. (MILD)
9	18989	1	DISCHARGE LINER RH (MILD 27.5")	33	9897	4	LEFT SIDE LINER 5 FT. (STAINLESS STEEL)
9	18991	1	DISCHARGE LINER RH (MILD 34.5")	33	9895	4	LEFT SIDE LINER 5 FT. (MILD STEEL)
9	18993	1	DISCHARGE LINER RH (MILD 42.5")				

NOTE: WHEN ORDERING NEW DISCHARGE LINERS MEASURE DISCHARGE LENGTH. MEASUREMENTS ARE TAKEN FROM UNDER EITHER AUGER, FROM THE BACK PLATE TO THE END (WHERE DROP CHUTE BEGINS). PLEASE REFER TO PAGE 20 FOR VISUAL REFERENCE.

AR - AS REQUIRED
NPN - NO PART NUMBER

HYDRAULIC COMPONENTS



HYDRAULIC COMPONENTS

ITEM PART # QTY DESCRIPTION

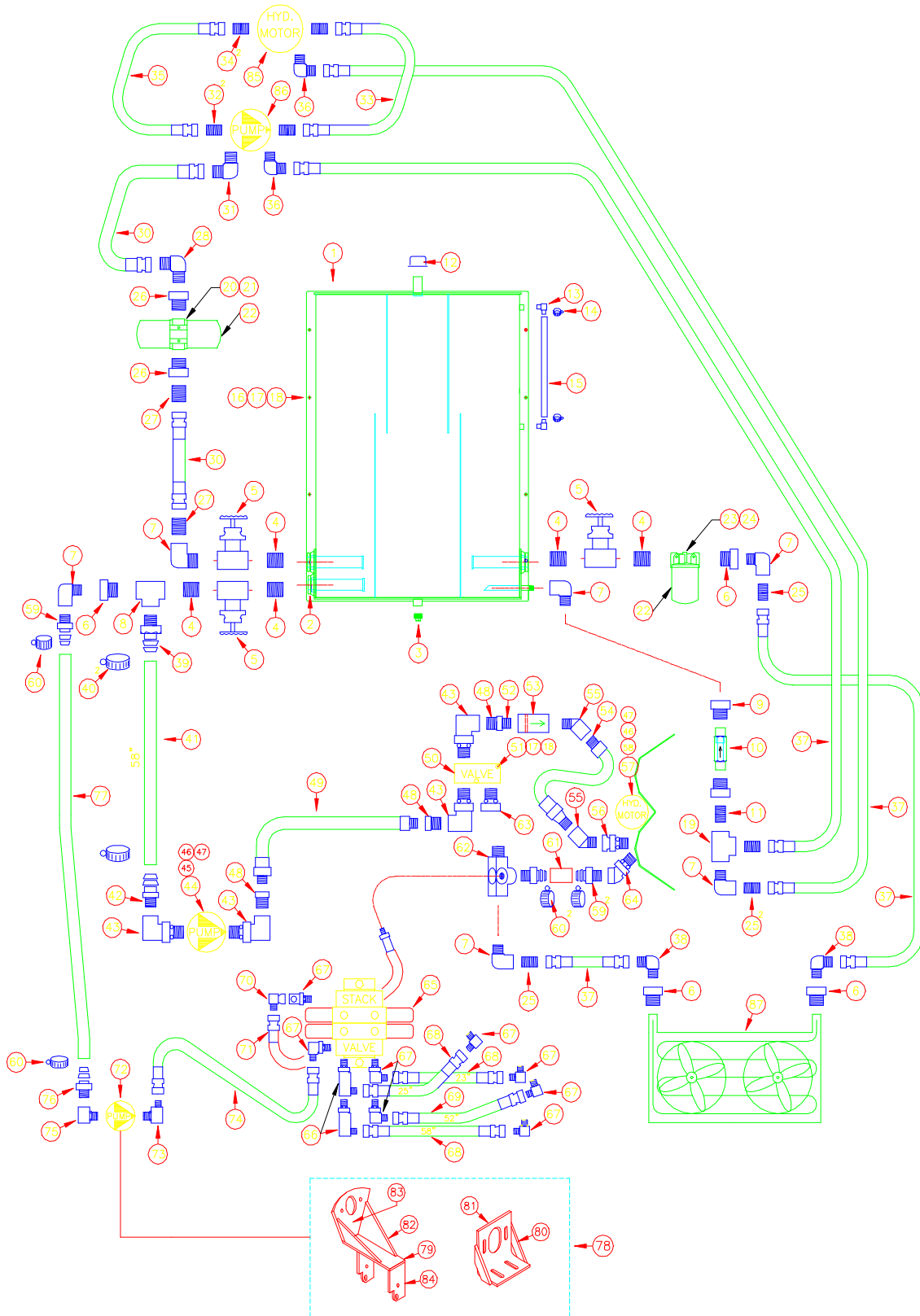
1	102368	1	VALVE (SAME AS 101779)
2	4411	1	SOLENOID CARTRIDGE
3	4413	1	SOLENOID
4	101240	1	STACK VALVE, 2 SPOOL
4	102347	1	STACK VALVE, 3 SPOOL
5	4405	AR	VALVE BANK
6	4406	AR	SEAL KIT, SINGLE SECTION
7	4407	3	TIE ROD (2 BANKS)
7	4408	3	TIE ROD (3 BANKS)

ITEM PART # QTY DESCRIPTION

8	4409	6	NUT
9	4410	AR	COIL
10	4475	AR	NUT
11	100929	1	PUMP, AUXILIARY
12	4461	1	SEAL, SHAFT
13	100916	1	PULLEY, 6" DIA.
14	4484	1	KEY
15	A17538	1	DIODE ASSEMBLY
16	4486	1	BEARING

NOTE: AR - AS REQUIRED

TRUCK HYDRAULICS



TRUCK HYDRAULICS

ITEM	PART #	QTY	DESCRIPTION	ITEM	PART #	QTY	DESCRIPTION
1	A18324	1	HYDRAULIC TANK ASSEMBLY	48	101770	3	BUSHING
2	101850	3	STRAINER, 25 GPM 100 MESH	*49	101857	1	HOSE ASSEMBLY, 50"
3	101674	1	PLUG, TANK	50	102368	1	VALVE
4	101851	5	NIPPLE	51	100689	2	SCREW
5	101852	3	GATE VALVE	52	101859	1	NIPPLE
6	101862	3	REDUCER, 1 1/4" NPTM - 3/4" NPTF	53	101860	1	VALVE, CHECK
7	100941	5	ELBOW	54	102660	1	HOSE ASSEMBLY
8	101853	1	TEE	55	102478	2	ELBOW
9	101770	2	REDUCER, 1" NPTM - 3/4" NPTF	56	101780	1	ADAPTER
10	NPN	1	CHECK VALVE (CV-08-P-5)	*57	102980	1	HYDRAULIC MOTOR
11	100357	1	3/4" CLOSE NIPPLE	58	300889C	2	SCREW
12	100182	1	BREATHER CAP	59	100831	3	HOSE BARB
13	102485	2	ELBOW	60	100761	4	HOSE CLAMP
14	102486	2	HOSE CLAMP	61	14877	1	HOSE, RETURN
15	7070968	2'	SIGHT TUBE	62	17008	1	TEE
16	100323	8	SCREW	63	102457	1	ADAPTER
17	100304	10	WASHER	64	102479	1	ELBOW
18	100221	10	NUT	65	101240	1	STACK VALVE
19	100500	1	TEE 3/4" NPTF - 3/4" NPTF - 3/4" NPTF	66	101241	2	ELBOW
20	A103098	1	FILTER ASSEMBLY, DUAL	67	101642	8	ELBOW
21	103099	1	FILTER HEAD, DUAL	68	NPN	3	HOSE ASS'Y (1/4 X 30" LG., #6 JIC [F])
22	103096	3	FILTER ELEMENT	69	NPN	1	HOSE ASS'Y (1/4 X 36" LG., #6 JIC [F])
23	A103094	1	FILTER ASSEMBLY, SINGLE	70	101937	1	ELBOW
24	103095	1	FILTER HEAD, SINGLE	71	A17059	1	HOSE ASSEMBLY
25	101664	3	ADAPTER, 12 JIC - 3/4 NPT	*72	100929	1	AUX. PUMP, GEAR
26	NPN	2	REDUCER, 1 1/2 NPT - 1 1/4 NPT	*72	103017	1	AUX. PUMP, ELEC.
27	NPN	2	ADAPTER, 1 1/4 (20) JIC - 1 1/4 NPT	73	101785	1	ELBOW
28	NPN	1	ELBOW, 1 1/4 (20) JIC - 1 1/4 NPT	*74	101783	1	HOSE ASSEMBLY, 164"
29	100516	1	ELBOW, STR, 1 1/4 NPT	75	101597	1	ELBOW
*30	7070932	AR	HOSE, 1 1/4 SUCTION	76	101782	1	HOSE BARB
31	NPN	1	ELBOW, 20 JIC - 16 SAE	*77	14881	1	SUCTION HOSE, 132"
32	NPN	2	ADAPTER, 1" SPLIT FLANGE - 16 JIC	78	A9441	1	BRACKETS, AUXILLIARY PUMP
*33	NPN	AR	HOSE, 1" SUPPLY, 6000 PSI	79	15854	1	PLATE
34	NPN	2	ELBOW, 1" SPLIT FLANGE - 16 JIC	79	11821	1	PLATE
*35	NPN	AR	HOSE, 1" RETURN, SAE100R2, 2000 PSI	80	15855	2	BAR, PUMP BRACE
*36	102143	AR	ELBOW, 12 SAE - 12 JIC	81	15853	1	PUMP MOUNT ANGLE
*36	NPN	AR	ELBOW, 16 SAE - 12 JIC	82	12182	2	GUSSET
*37	NPN	AR	HOSE, 3/4" RETURN, SAE100R1, 1250 PSI	83	11870	1	PUMP MOUNT PLATE
38	NPN	2	ELBOW, 12 JIC - 3/4 NPT	84	11823	2	MOUNT PLATE
39	100515	1	HOSE BARB	*85	NPN	1	HYDROSTATIC DRIVE MOTOR
40	100514	2	HOSE CLAMP	*86	NPN	1	HYDRAULIC PUMP
*41	17062	1	SUCTION HOSE, 58"	*87	NPN	1	OIL COOLER
42	102240	1	HOSE BARB	88	A9558	1	SEAL KIT (FOR 102996)
43	101856	4	ELBOW	89	4461	1	SEAL (FOR 100929)
44	102996	1	PUMP	90	4437	1	SOLENOID SWITCH (FOR 103017)
45	101444	2	SCREW	91	9692	1	2500 PSI PUMP (FOR 103017)
46	300826C	4	NUT	92	9853	1	ELECTRIC MOTOR (FOR 103017)
47	100272	4	WASHER				

NOTE: *30, *31, *33, *35, *37, *41, *74, *77 - MEASURE THE LENGTH OF EACH HOSE BEFORE ORDERING.

(*33, *35 - PLEASE SPECIFY PRESSURE RATING).

*36 - PLEASE SPECIFY CASE DRAIN PORT DIAMETER (12 SAE OR 16 SAE).

*57 - USE TRW ROSS HYDRAULIC MOTOR # 102980 AS PRIMARY MOTOR. CHAR-LYNN # 101705 MAY BE USED IF NECESSARY.

*72 - PLEASE SPECIFY TYPE OF PUMP, GEAR DRIVEN OR ELECTRIC.

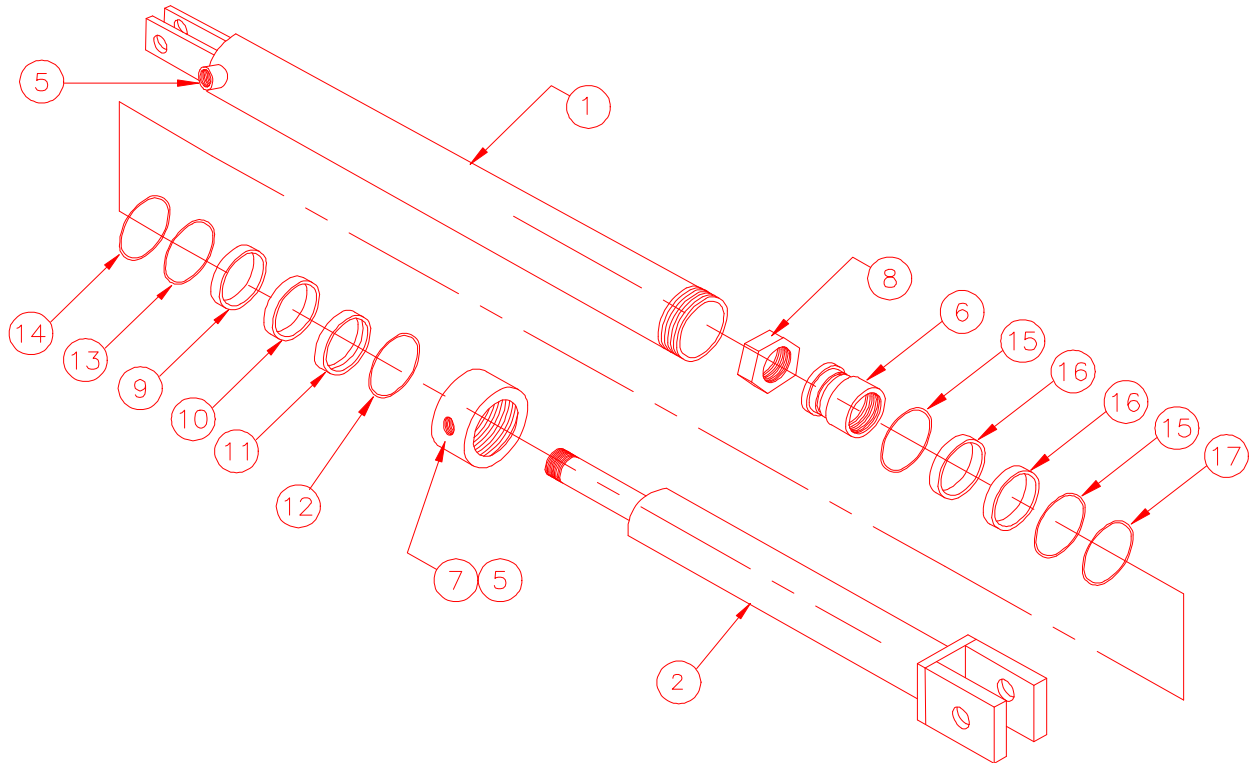
*85, *86, *87 - CALL TO VERIFY MODEL NUMBER BEFORE ORDERING REPLACEMENT (SEE PAGE 9).

AR - AS REQUIRED

NPN - NO PART NUMBER

88-92 - NOT SHOWN

DISCHARGE DOOR CYLINDER



DISCHARGE DOOR CYLINDER

3 1/2" BORE

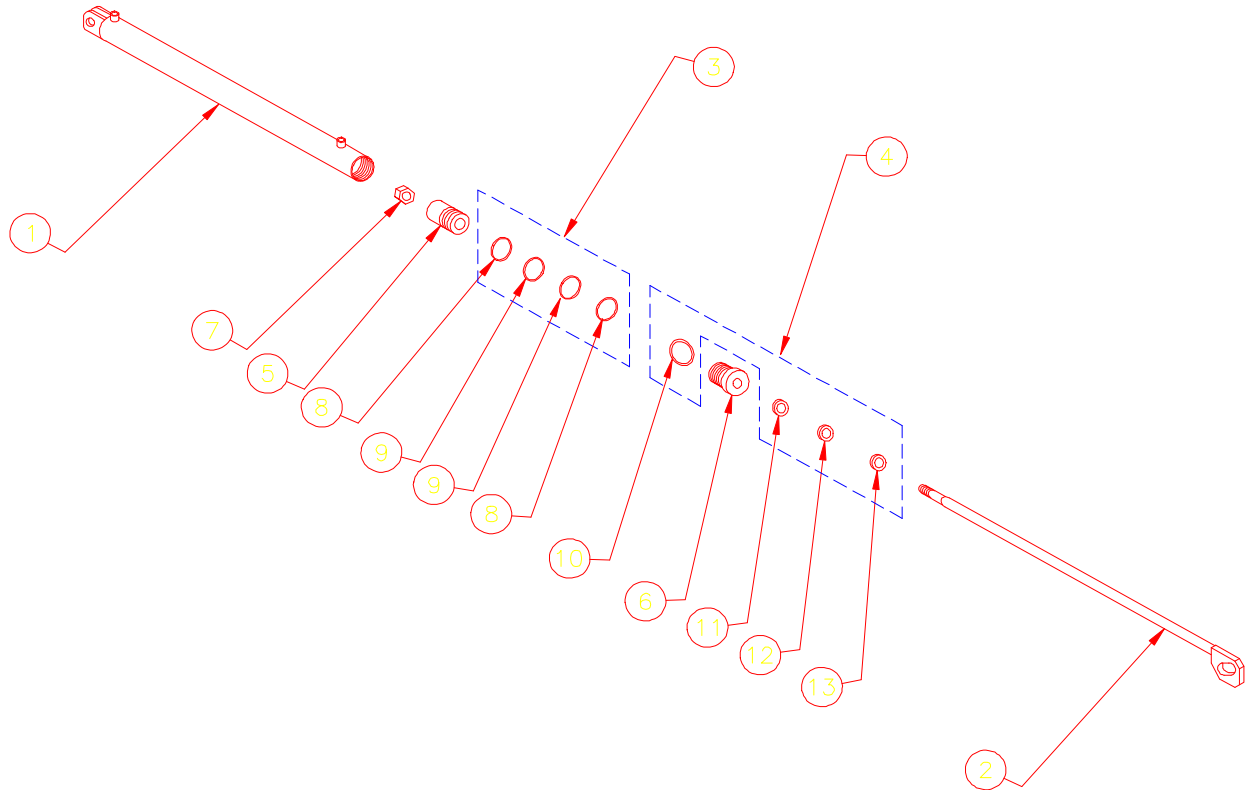
ITEM	PART #	QTY	DESCRIPTION	ITEM	PART #	QTY	DESCRIPTION
	A16955	1	CYLINDER ASS'Y, DIS. DOOR	9	15607	NSS	1 BUSHING
1	A12130	1	CYLINDER BODY ASS'Y, 3 1/2" BORE	10	101958	NSS	1 SEAL, POLY-PAK
2	A16956	1	CYLINDER SHAFT ASS'Y	11	15606	NSS	1 WIPER BUSHING
*3	A9255	1	PISTON SEAL KIT	12	100135	NSS	1 WIPER RING
*4	A9406	1	GLAND NUT SEAL KIT	13	100145	NSS	1 RETAINING RING
5	101669	2	PIPE PLUG #6 SAE	14	100194	NSS	1 O-RING SEAL
6	10095	1	PISTON, 3 1/2" DIA.	15	100159	NSS	2 O-RING SEAL
7	12131	1	GLAND NUT	16	100621	NSS	2 BACK UP RING
8	100222	1	NUT, HEX	17	100140	NSS	1 O-RING SEAL

NOTE: *3 INCLUDES ITEMS 15, 16, 17.

*4 INCLUDES ITEMS 9, 10, 11, 12, 13, & 14.

NSS - NOT SOLD SEPARATELY

DROP CHUTE CYLINDER

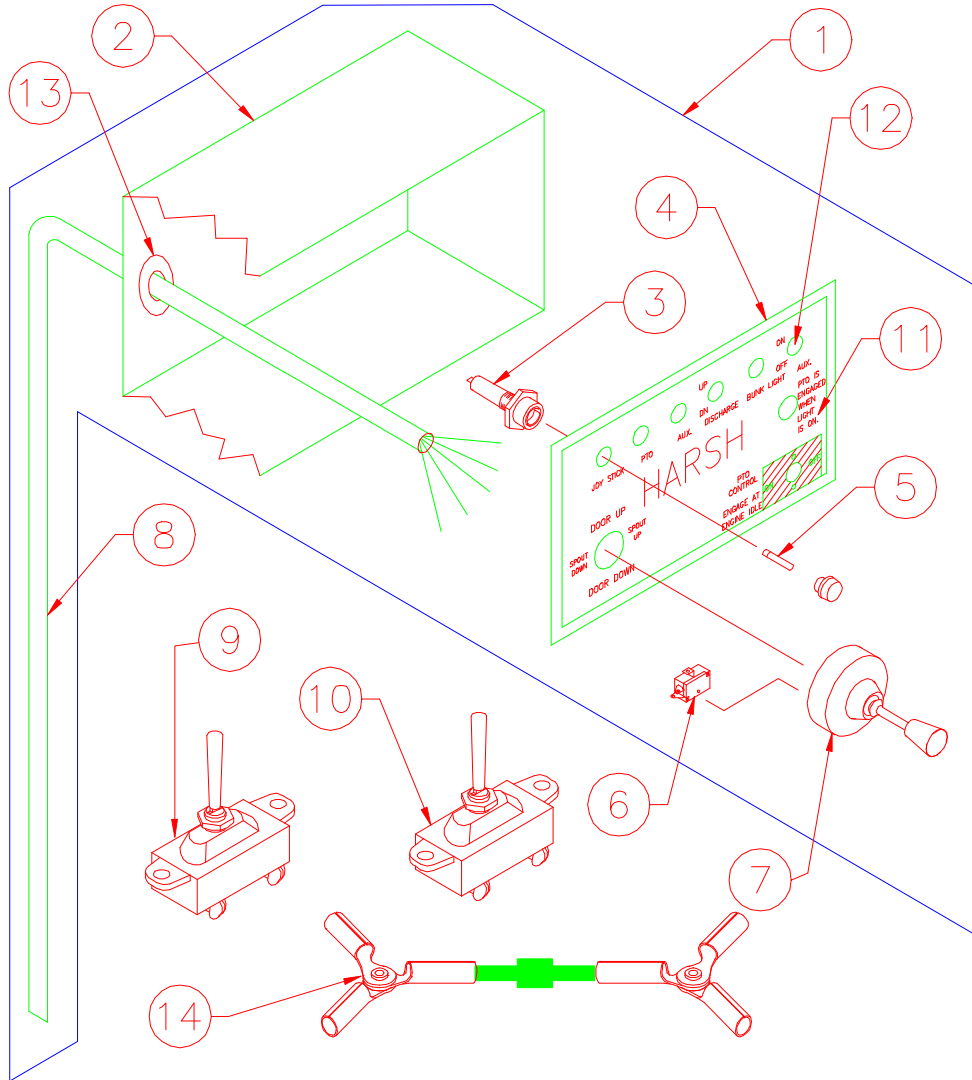


DROP CHUTE CYLINDER

ITEM	PART #	QTY	DESCRIPTION	ITEM	PART #	QTY	DESCRIPTION
	A17370	1	CHUTE CYLINDER ASSEMBLY	7	100248	1	NUT, HEX
1	A17369	1	CYLINDER BODY	8	100153 NSS	2	O-RING
2	A14507	1	CYLINDER SHAFT ASSEMBLY	9	100732 NSS	2	BACK-UP RING
*3	A9252	1	PISTON SEAL KIT	10	100901 NSS	1	O-RING
*4	A9400	1	GLAND NUT SEAL KIT	11	101699 NSS	1	O-RING
5	10092	1	PISTON	12	101698 NSS	1	BACK-UP RING
6	14503	1	GLAND NUT	13	100133 NSS	1	WIPER

NOTE: *3 INCLUDES ITEMS 8, 9.
 *4 INCLUDES ITEMS 10-13.
 NSS - NOT SOLD SEPARATELY

ELECTRIC SWITCHES



ELECTRIC SWITCHES

ITEM PART # QTY DESCRIPTION

*1	A7539	1	CONTROL BOX, JOYSTICK
1	A7456	1	CONTROL BOX, JOYSTICK
2	16781	1	CONTROL BOX, BOTTOM
3	490041	AR	FUSE HOLDER
4	16780	1	CONTROL BOX, LID
5	NPN	AR	FUSE, AGC 10 AMP
6	4404	AR	JOY STICK SWITCH
*7	A17469	1	JOY STICK CONTROL (8 SWITCH)
7	102079	1	JOY STICK CONTROL (4 SWITCH)
8	16399	1	CABLE, 4 CONDUCTOR
*8	17468	1	CABLE, 8 CONDUCTOR

ITEM PART # QTY DESCRIPTION

9	490197	1	PTO SWITCH
10	101324	2	TOGGLE SWITCH
11	102422	1	DECAL, JOY STICK CONTROL BOX
12	102295	AR	PLUG
13	102294	1	GROMMET, CABLE
14	A17539	1	DIODE ASSEMBLY
15	A16110	1	INDICATOR PEDESTAL
16	102328	1	DIGITAL LCD REVOLUTION COUNTER
17	490392	1	REVOLUTION COUNTER MAGNET - top
18	490343	1	REVOLUTION COUNTER MAGNET - bottom

NOTE: AR - AS REQUIRED

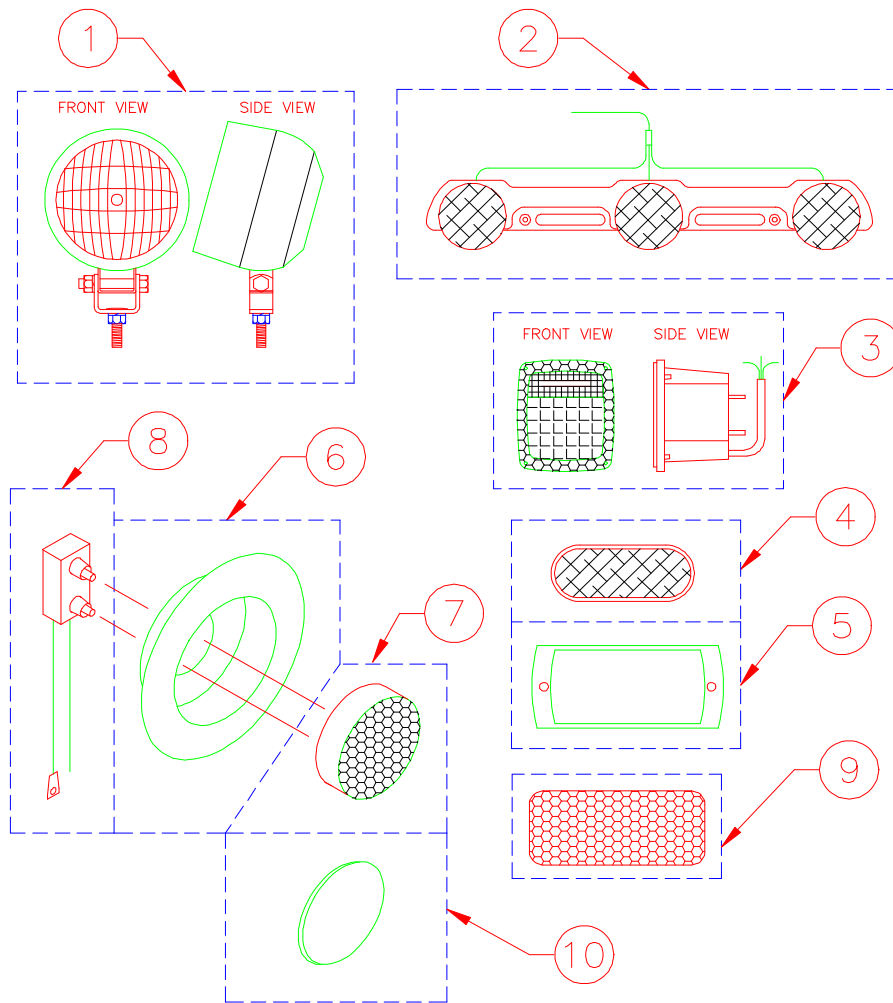
NPN - NO PART NUMBER

*1, *7, & *8 FOR MONARCH PUMP MODEL #628 ONLY.

*7 & 7 JOY STICK CONTROL INCLUDES PART #4404 (JOY STICK SWITCH).

15, 16, 17, 18 - NOT SHOWN

LIGHTS



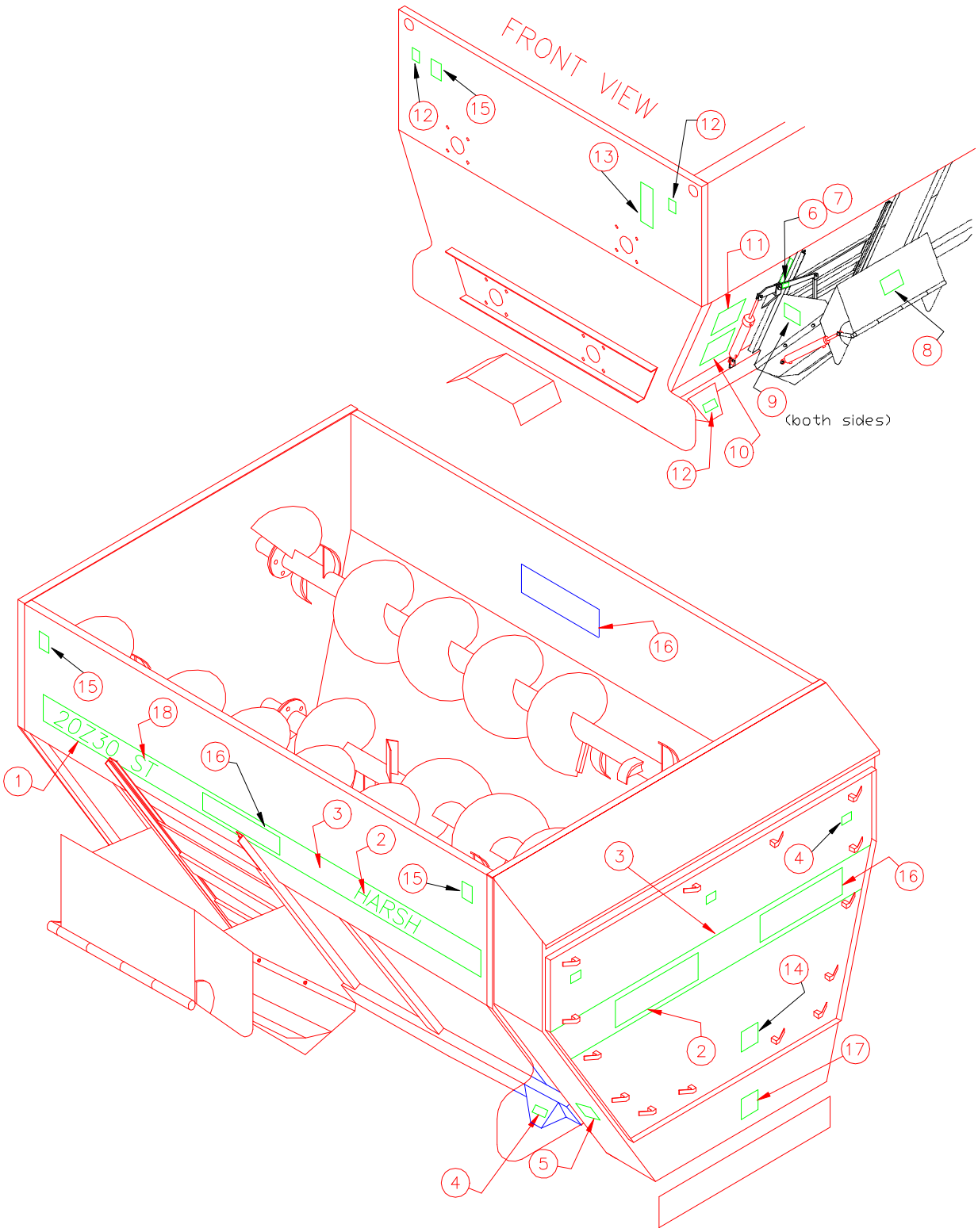
LIGHTS

ITEM	PART #	QTY	DESCRIPTION
1	102439	AR	BUNK LIGHT
2	100335	AR	TRIPLE IDENTIFICATION LIGHT
3	102244	AR	TAIL LIGHT, LEFT
3	102257	AR	TAIL LIGHT, RIGHT
4	102241	AR	CLEARANCE LIGHT, RED
4	102242	AR	CLEARANCE LIGHT, AMBER
5	102243	AR	CHROME GUARD, CLEARANCE LIGHT
6	102490	AR	GROMMET, CLEARANCE LIGHT (FOR 3" HOLE)
7	102493	AR	CLEARANCE LIGHT, RED (FOR GROMMET)
7	102492	AR	CLEARANCE LIGHT, AMBER (FOR GROMMET)
8	102491	AR	PLUG, CLEARANCE LIGHT (FOR GROMMET)
9	102361	AR	REFLECTOR, RED
9	102360	AR	REFLECTOR, YELLOW
10	17479	AR	STEEL PLUG (FOR GROMMET - W/O CLEARANCE LIGHT)

NOTE: AR - AS REQUIRED

MIXER DECALS

900 - 20z30



MIXER DECALS

ITEM	PART #	QTY	DESCRIPTION	ITEM	PART #	QTY	DESCRIPTION
1	102796	2	900 DECAL	12	102360	4	ORANGE REFLECTOR (STATIONARY)
1	103069	2	20Z30 DECAL	*13	102071	1	DANGER DO NOT ENTER
2	102549	3	HARSH, SIDE & REAR DOOR DECAL	14	102370	1	DO NOT OPERATE W/O SHIELD
3	102546	53'	RED STRIPE, SIDE	*15	102777	5	TUB GUARD DECAL
4	102361	2	RED REFLECTOR	16	102859	3	DECAL, HAYSIZOR (20Z30 TRUCK)
4	102361	5	RED REFLECTOR (STATIONARY)	17	102776	1	GEARBOX SPROCKET ROTATION
5	102070	2	OIL BATH MAINTENANCE	18	102548	2	DECAL, WHITE, ST (STATIONARY)
6	103083	1	DECAL, DISCHARGE DOOR ARM	**	A9735	1	900 DECAL KIT (TRUCK)
7	101181	1	DOOR MARKER, TRUCK	**	A9929	1	900 DECAL KIT (STATIONARY)
8	103084	1	DECAL, DISCHARGE DOOR CHUTE	**	A9882	1	20Z30 DECAL KIT (TRUCK)
9	103085	2	DECAL, SIDE DISCHARGE	**	A9936	1	20Z30 DECAL KIT (STATIONARY)
10	102069	1	MAINTENANCE	**	A9595	1	SAFETY DECAL KIT (MIXERS)
11	102109	1	CAUTION, BEFORE WELDING	**	A9915	1	SAFETY DECAL KIT (STATIONARY)
12	102360	2	ORANGE REFLECTOR				

NOTE: *13 INSTALL NEXT TO LADDER.

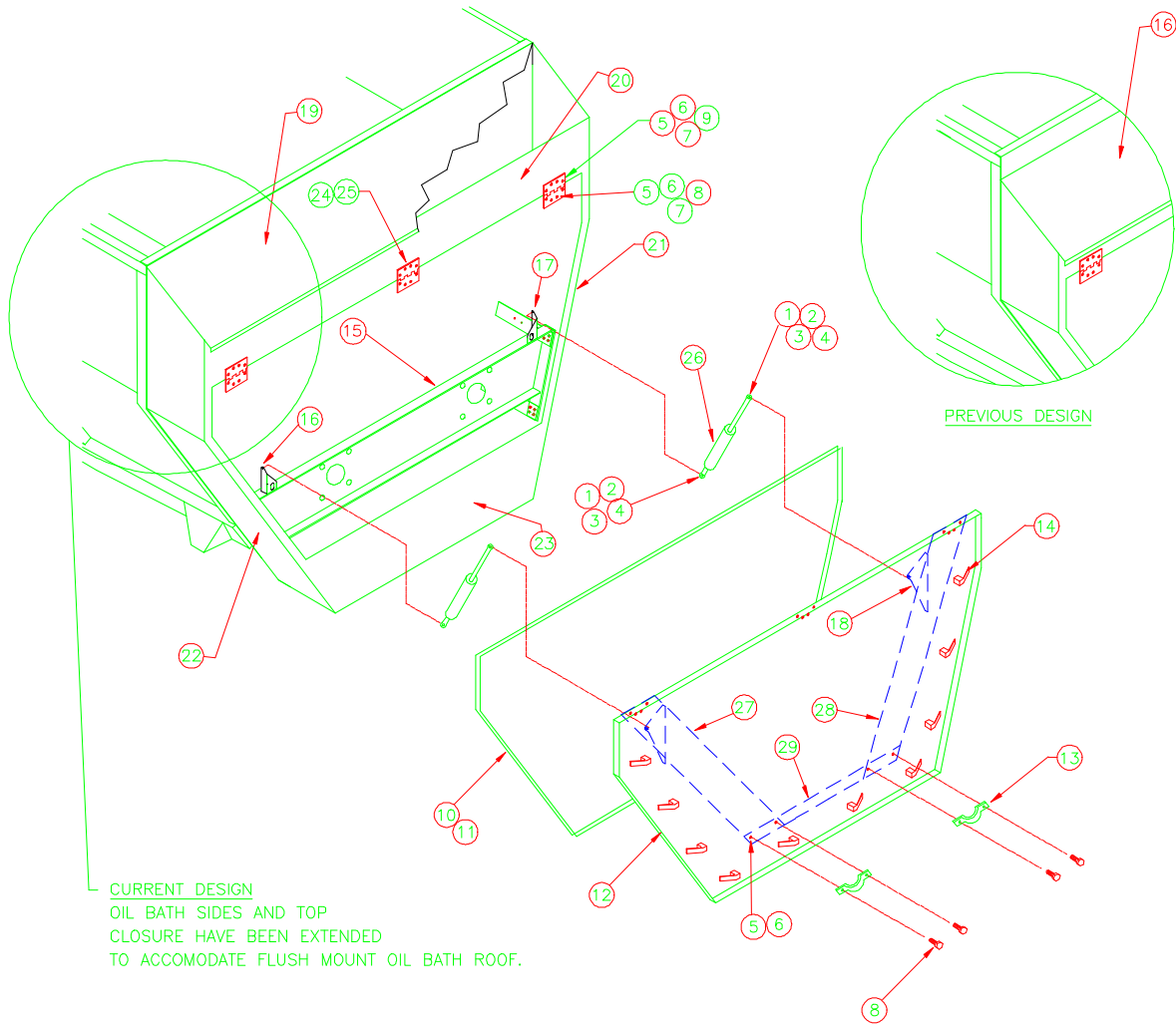
*15 TO BE INSTALLED ON MIXERS EQUIPPED WITH TUB GUARD OPTION (PAGE 38).

**DECALS INCLUDED IN DECAL KITS ARE EQUAL TO DECALS ATTACHED TO MIXER AT THE TIME OF SHIPMENT.

DECALS NOT AVAILABLE SEPERATELY...PURCHASE BY KIT ONLY

HARSH ENCOURAGES THE REPLACEMENT OF ALL SAFETY DECALS WHEN THEY BECOME UNREADABLE, DAMAGED, OR IF THE UNIT IS REPAINTED. IN ORDER TO ASSURE MIXERS ARE COMPLETELY REDECALED WITH ALL THE NECESSARY SAFETY DECALS, THEY ARE INCLUDED IN THE TRUCK AND TRAILER DECAL KITS. IF YOU DO NOT DESIRE TO PURCHASE THE COMPLETE MIXER DECAL KIT, YOU CAN PURCHASE ONLY THE SAFETY DECAL KIT WHICH WILL PROVIDE YOU WITH THE SAFETY AND OPERATION DECALS ONLY.

REAR OIL BATH & DOOR



REAR OIL BATH & DOOR

ITEM	PART #	QTY	DESCRIPTION	ITEM	PART #	QTY	DESCRIPTION
1	100692	4	SCREW, HEX HD CAP	18	18244	2	UPPER STRUT MOUNT
2	101985	4	NUT, LOCK	19	18930	1	OIL BATH ROOF
3	100300	8	WASHER, FLAT	*19	18026	1	OIL BATH ROOF
4	100254	4	NUT, HEX	20	18929	1	OIL BATH TOP CLOSURE
5	100221	28	NUT	*20	18443	1	OIL BATH TOP CLOSURE
6	100304	28	LOCK WASHER	21	18927	1	OIL BATH SIDE, RIGHT
7	100443	24	WASHER, FLAT	*21	18018	1	OIL BATH SIDE, RIGHT
8	100323	16	SCREW	22	18928	1	OIL BATH SIDE, LEFT
9	102781	12	SCREW	*22	18019	1	OIL BATH SIDE, LEFT
*10	102481	8'	SEAL, FLEXIBLE DOOR 1/4	23	18447	1	OIL BATH BOTTOM CLOSURE
*11	102477	18'	SEAL, FLEXIBLE DOOR 1/8	*24	102446	3	HINGE
*12	18448	1	OIL BATH DOOR	*25	17026	3	HINGE BACK PLATE
13	102779	2	HANDLE, OIL BATH DOOR	26	102451	2	STRUT, GAS CHARGED SUPPORT
14	101305	10	LATCH	27	18445	1	FORMED DOOR CHANNEL, LEFT
15	A18449	1	OUTER BEARING SUPPORT ASSEMBLY	28	18446	1	FORMED DOOR CHANNEL, RIGHT
16	18254	1	STRUT MOUNT, LEFT	29	18444	1	DOOR FRAME PLATE
17	18245	1	STRUT MOUNT, RIGHT				

NOTE: *10 - TO BE USED ON TOP OF DOOR OPENING.

*11 - TO BE USED ON SIDES AND BOTTOM OF DOOR OPENING.

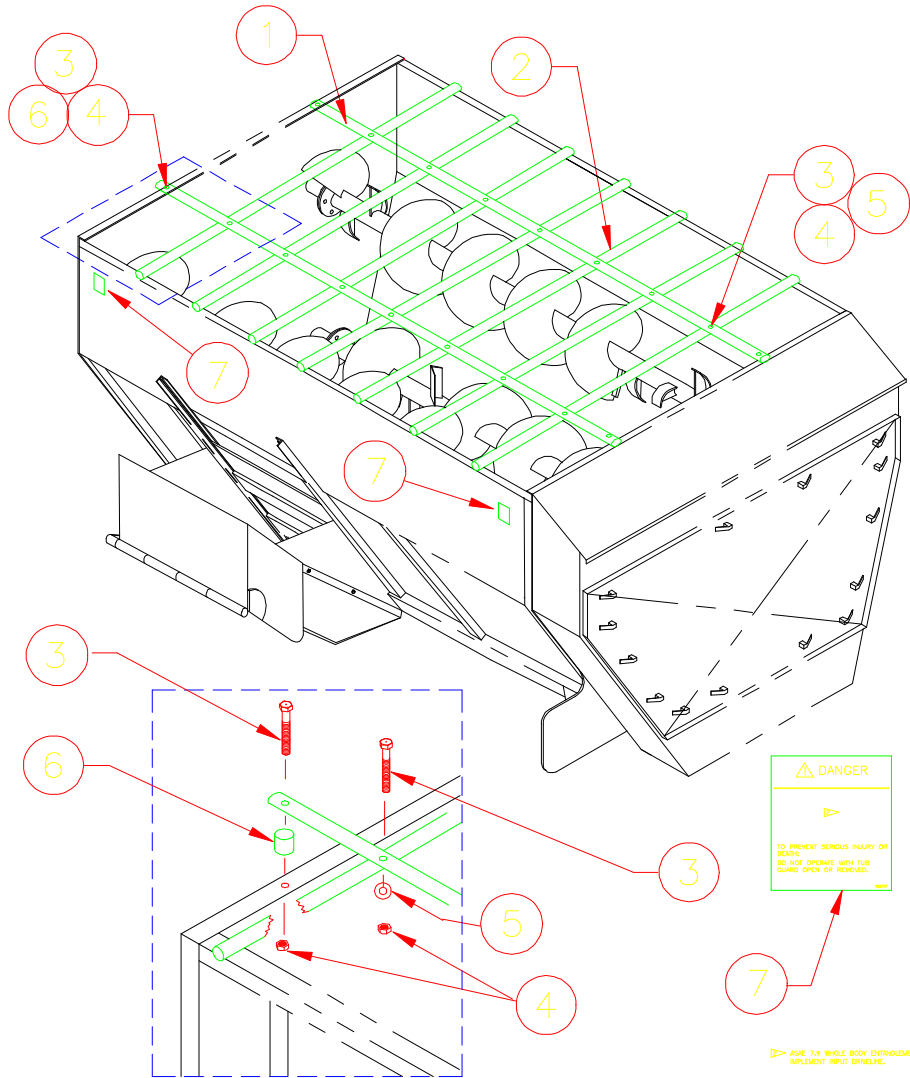
*12 - MEASURE EXISTING DOOR BEFORE ORDERING REPLACEMENT.

*24, *25 - PLEASE VERIFY NUMBER OF HINGES (3), (4), OR (5).

19, 20, 21, 22 - USED ON ALL UNITS S/N (900HB9000, 20z30HB9000) AND ABOVE.

*19, *20, *21, *22 - PREVIOUS DESIGN, USED ON UNITS UP TO S/N (900HB8000, 20z30HB8000). CHECK MIXER IF S/N IS BETWEEN (900HB8000, 20z30HB8000) AND (900HB9000, 20z30HB9000).

TUB GUARD



TUB GUARD

ITEM PART # QTY DESCRIPTION

*	18275	1	TUB GUARD ASSEMBLY
1	18276	2	PIPE, TUB GUARD 240" LG.
2	17472	13	PIPE, TUB GUARD 99 1/2" LG.
3	102127	30	SCREW, HEX HEAD CAP

ITEM PART # QTY DESCRIPTION

4	102574	30	NUT, HEX NY-LOCK
5	100713	30	WASHER, FLAT
6	17256	4	PIPE, GUARD SPACER 3/4 LG.
*7	102777	5	DECAL, TUB GUARD

NOTE: *TUB GUARD ASSEMBLIES INCLUDE ALL PARTS SHOWN.
 *7 ALSO SHOWN ON PAGE 34-5, (ITEM 15).